



Aagon Client Management Platform - First Steps -

Aagon Consulting GmbH
Coesterweg 45
59494 Soest
Fon: +49 (0)2921 - 789 200
Fax: +49 (0)2921 - 789 244
www.aagon.com
info@aagon.com

Table of contents

1. Preface	5
2. ACMP Setup	6
2.1. Welcome	7
2.2. License Agreement	8
2.3. Select Destination Directory	9
2.4. Select SQL-Database Connection	10
2.5. Select Database Connection Account	11
2.6. Sharing client programs	12
2.7. Select Communication Ports	13
2.8. Select ACMP administrator password	14
2.9. Select Components	15
2.10. Ready to Install	16
2.11. Completing the ACMP Setup	17
3. Client Management	19
3.1. Starting the ACMP-Console	19
3.2. Console	20
3.3. Integrating other Solutions	21
3.3.1. Active Update	21
3.3.1.1. Search on internet	21
3.3.1.2. Install single patch	25
3.4. Registering new Licenses	27
3.5. Installing the Client-Service	29
3.6. Query Management	31
3.6.1. Available Queries	31
3.6.2. Query Wizard	33
3.6.2.1. Select Fields to display	33

3.6.2.2. Select filters	35
3.6.3. Grid	36
3.6.3.1. Results	36
3.6.3.2. Display	39
3.6.3.3. Filters	40
3.6.3.4. Show Details	41
Index	42

1. Preface

Aagon Client Management Platform

What is ACMP for?

Controlling company network with one simple console? A dream of every network administrator. Aagon brings the dream closer to reality. With the *Aagon Client Management Platform* we provide a console from which you can manage not only software and virus protection services but monitor and supervise the entire network.

Being a third party product, the system is independent on revisions. All the data can be exported and processed in many ways with the available company database management systems.

Structure

ACMP is a centre from which you control the entire network, a point of your IT-Environment management. The console provides several functionalities enabling lookup at each of the network clients. Apart from lookup, you are provided with tools to manipulate the system.

Solutions

You can upgrade the ACMP installing and licensing so called solutions. One of these enhancements is the *AVdetective* offering on line reporting about the state of the virus protection. Each client has its virus definitions controlled and can be provided with the newest vaccines when necessary.

How does the ACMP work?

With the login or in defined intervals, the *ACMP-Client Application* is executed to collect on line the necessary data for the ACMP-ServerService. The processed data are displayed on the console. New clients can have the Application installed from the console.

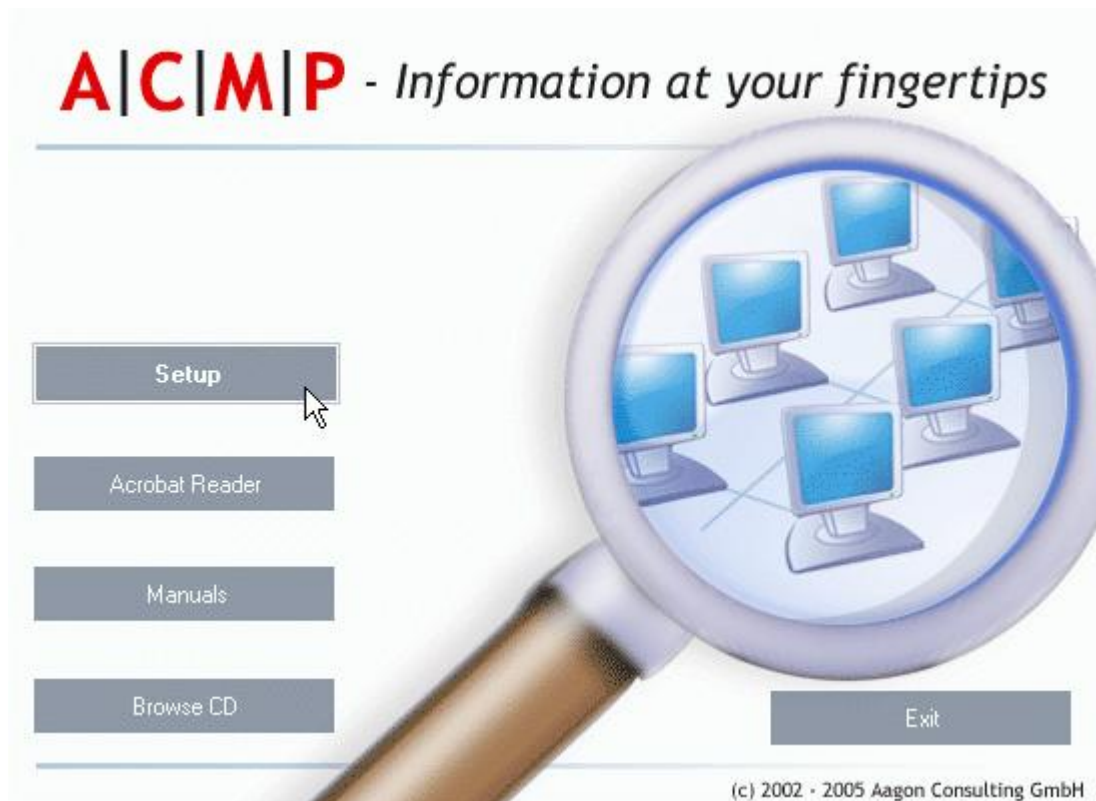
The system requirements

You need about 50 MB on the hard disk for the basic installation of the server and of the console. But you should calculate for more, especially when you want to control many clients. The installation of ACMP and MSDE requires 186 MB free disk space. If you also have to install the Internet Explorer 5.0 you need another 50 MB. The ACMP console can be installed under the following operating systems: Windows NT 4.0, Windows 2000 and Windows XP. The *ACMP-Client Application* works on all Windows-operating systems up 9x.

NOTE: If you want to administrate more than 50 Clients, you should connect ACMP to an existing MS SQL-Server. Other data-base-systems than MS SQL are not supported!

2. ACMP Setup

Insert the installation CD into the CD-ROM drive of the PC that you want to use for installation. If the *Autorun* function is active, the opening sequence will start automatically. Otherwise you can simply start the program by clicking *CDSTART.EXE* on the CD. After a few moments, you will see the following options on your screen:



- **Setup:** Starts the installation of ACMP
- **Acrobat Reader:** Installs Acrobat Reader
- **Manuals:** Opens an explorer window with the folders UK\ containing the english and DE\ containing the german PDF-manuals
- **Browse CD:** Opens the Root directory of the CD, to browse the CD
- **Exit:** Ends the installation

Select the *ACMP Setup* and the installation will start.

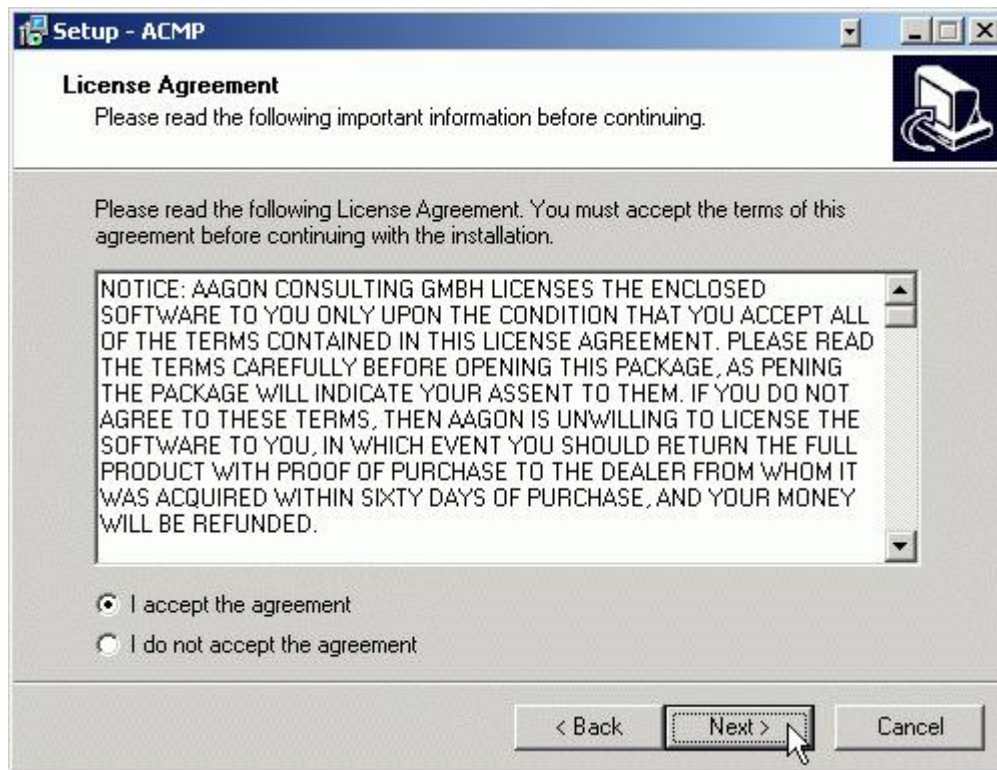
2.1. Welcome

The Setup opens with this welcome-screen:



2.2. License Agreement

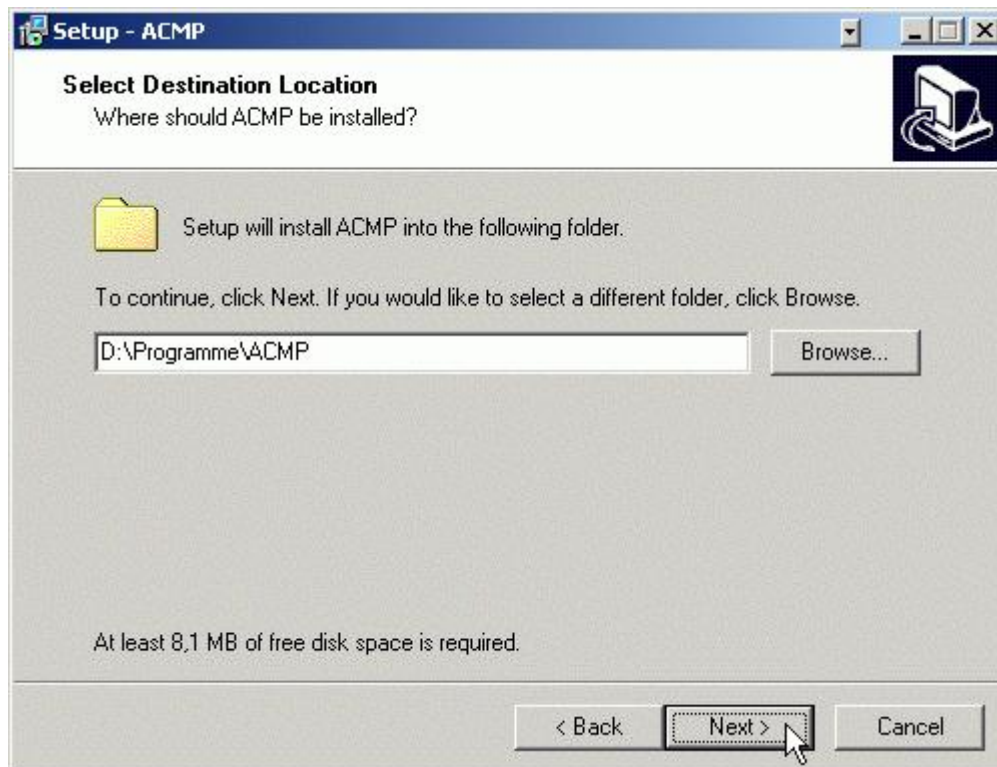
Read the license agreement carefully.



Select ☒ *I accept the agreement* if you accept the terms and you will be let to the next screen. Otherwise the *Next* button is not activated and you can either quit Setup with *Cancel* or *Back* to the previous screen.


2.3. Select Destination Directory

Select the directory where you want ACMP installed. The default is the current folder.



Type the desired path or browse to another folder. You may select another drive if necessary.


2.4. Select SQL-Database Connection

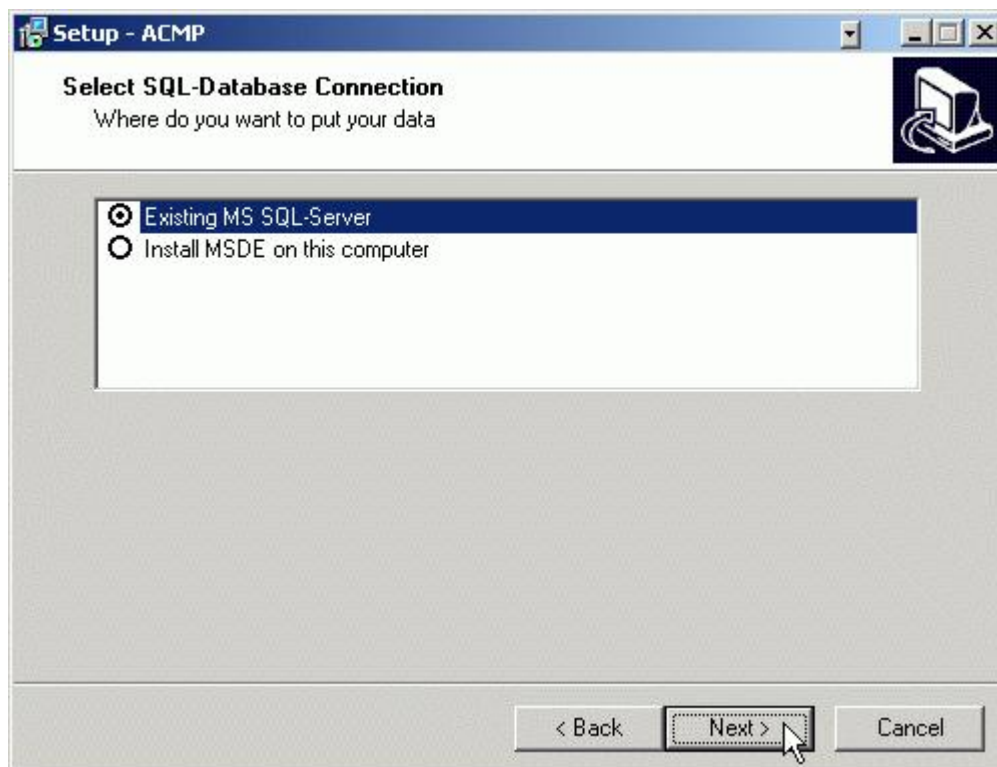
If you want to administrate more than 50 clients and to use an existing MS SQL-Server, then please activate the radio-button  *Existing MS SQL-Server*.

In addition the following conditions must be fulfilled:

Generate an ODBC interface, which refers to a valid data base on your MS SQL-Server, and obligatorily must be named ACMP. The user of this data base must have DataBaseOwner rights.

Note: You can read a step by step instruction in the whitepaper *ACMPandSQL2000.pdf*, that you find on CD in the folder *..\wpapers\UK*. Other data-base-systems than MS SQL are not supported!

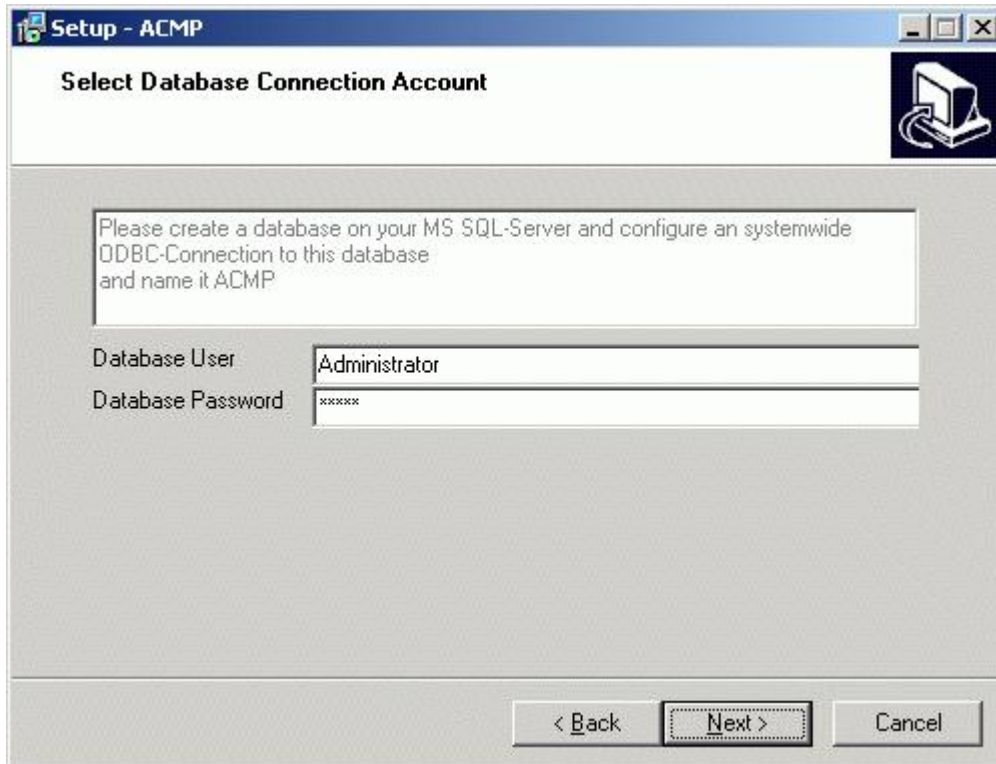
You may install the provided MSDE, marking the  *Install MSDE on this computer*. No further changes are necessary.



Important: To run the MSDE, Internet Explorer 5.0 or higher must be installed!

2.5. Select Database Connection Account

- This screen shows when an existing MS SQL-Server is used. Enter the *Database User* and the *Database Password*. Please make sure that the user has been defined in the database server.



Setup - ACMP

Select Database Connection Account

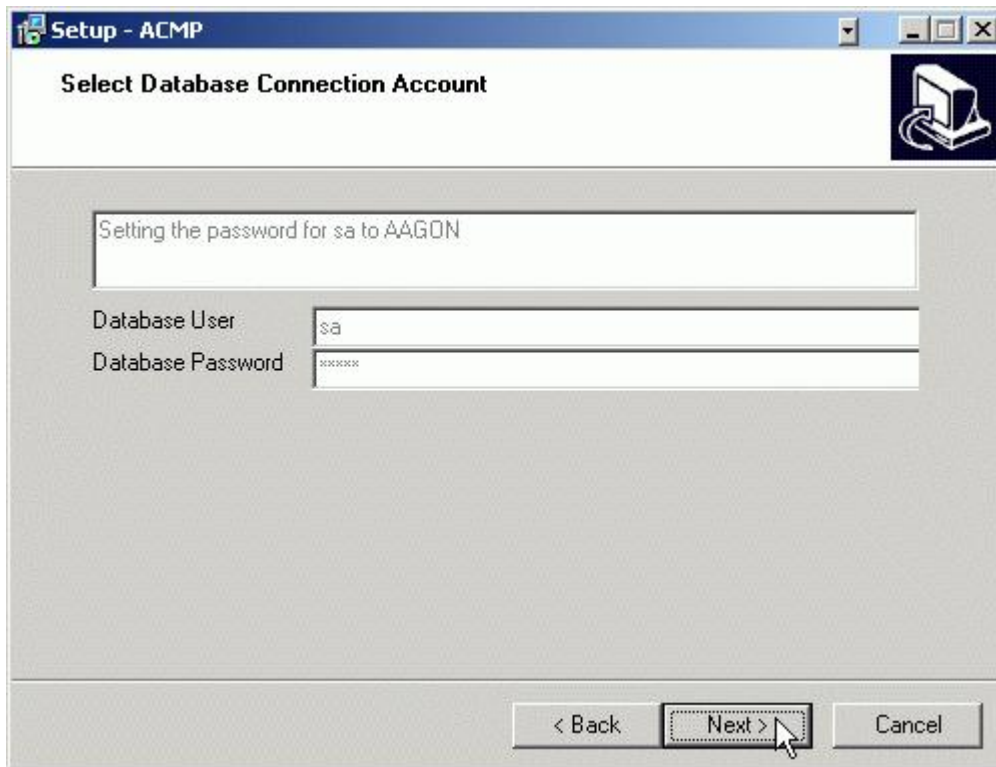
Please create a database on your MS SQL-Server and configure an systemwide ODBC-Connection to this database and name it ACMP

Database User Administrator

Database Password xxxxx

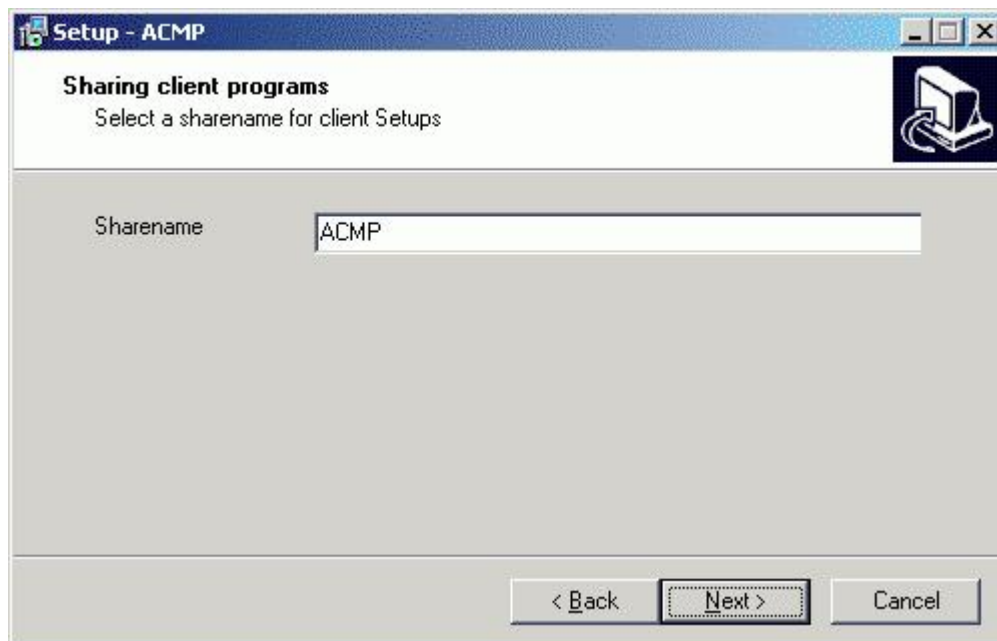
< Back Next > Cancel

- Given you opted for the supplied MSDE installation the following screen opens. The user *sa* has been predefined with no option of name change. The password is set to *aagon*. You need this password to log on at the first start of the ACMP-Console.



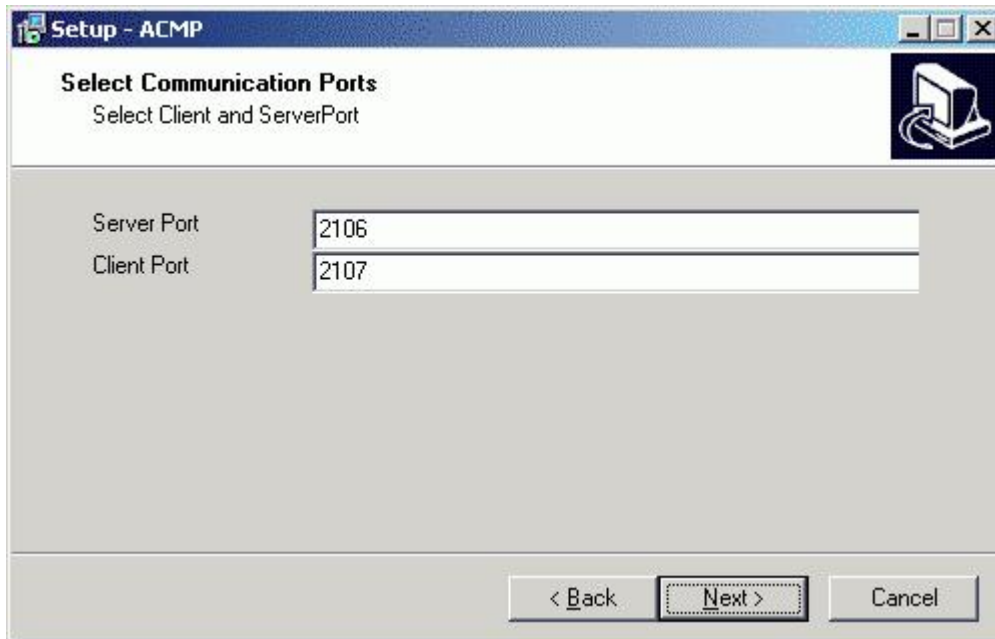
2.6. Sharing client programs

Enter the *Sharename* under which the ACMP-Program Directory should be shared on the network. The default name is *ACMP*. You can change this.



2.7. Select Communication Ports

Define the *Server Port* and the *Client Port* here. The program suggests 2106 and 2107 Ports.



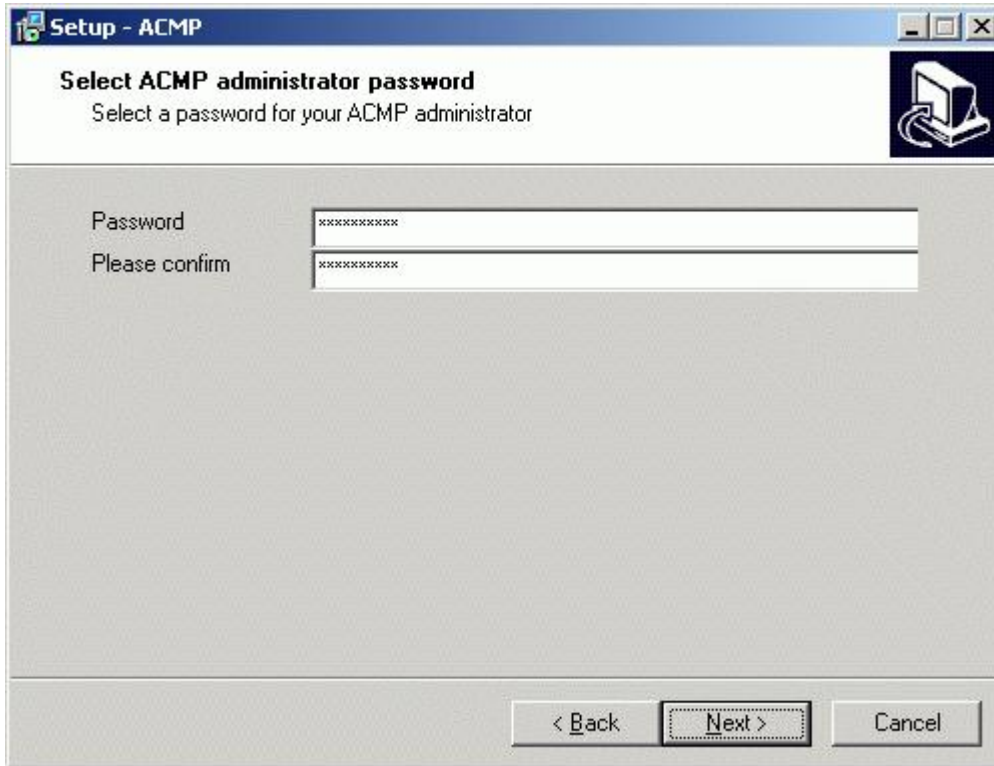
You can use any port, not being used by another program.



Note: If you want to install the *ACMP Client Application* on the same computer where ACMP will be installed, you have to enter two different port numbers. If you don't do this you can't get data from this computer. In addition these ports must not be locked by a firewall.

2.8. Select ACMP administrator password

Here you can enter the password by which your ACMP administrator will log on the ACMP Console.



Setup - ACMP

Select ACMP administrator password

Select a password for your ACMP administrator

Password:

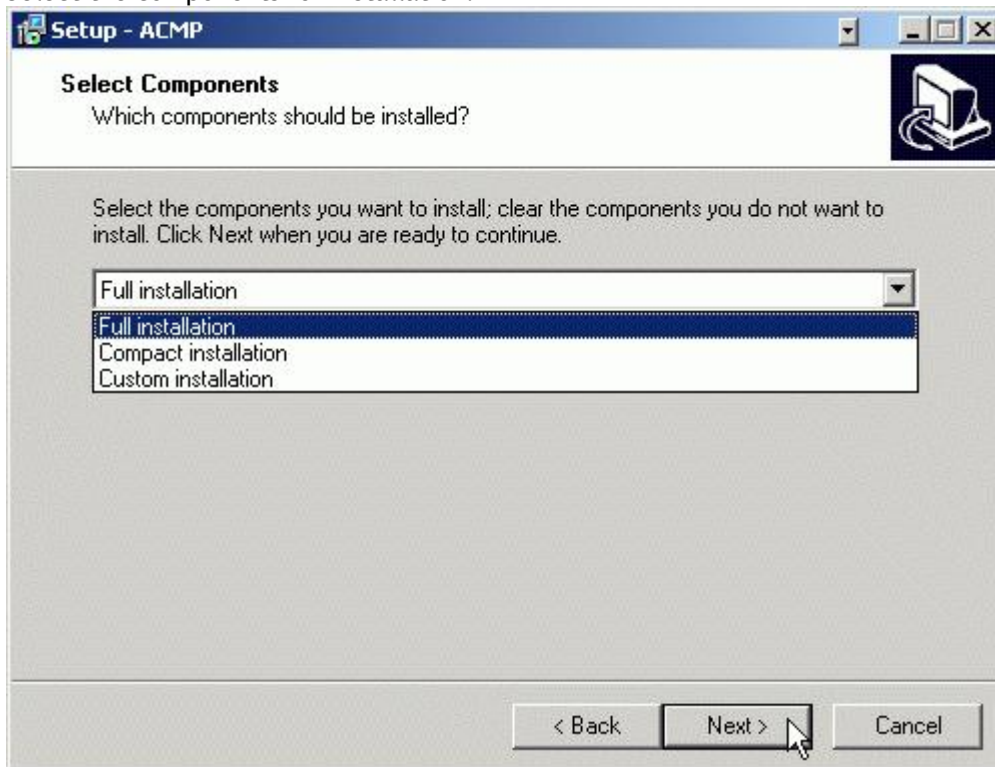
Please confirm:

< Back Next > Cancel

Enter the *Password* and re-enter it under *Please confirm*.

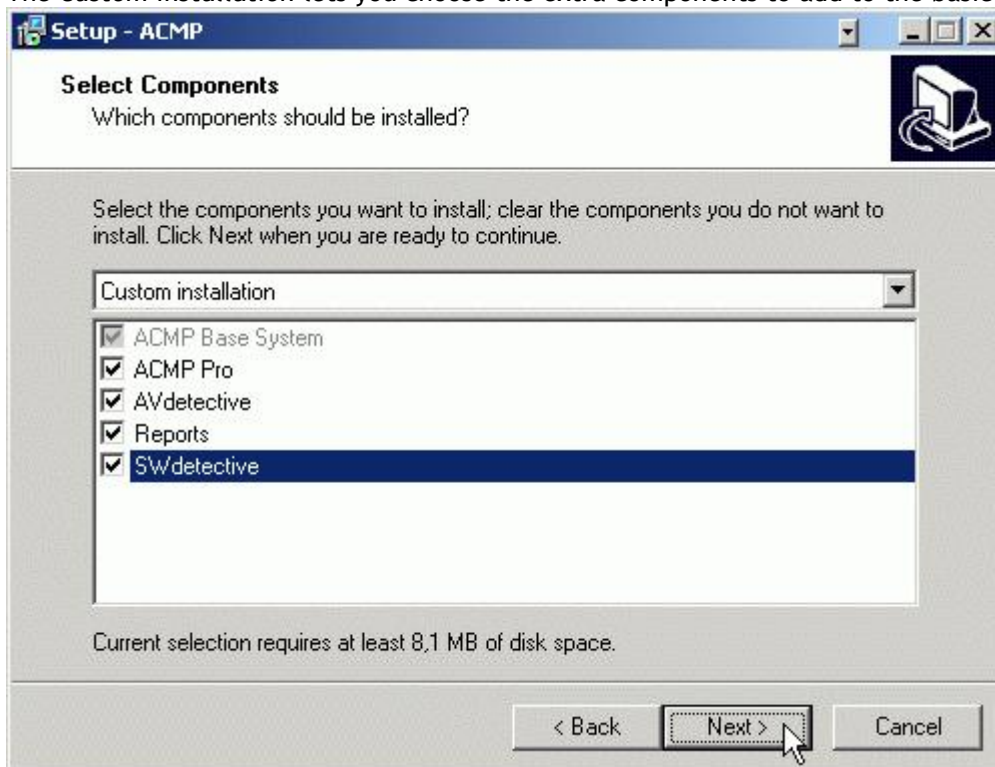
2.9. Select Components

Select the components for installation.



"Full installation" installs everything, the *Compact installation* sets only the basics of the ACMP.

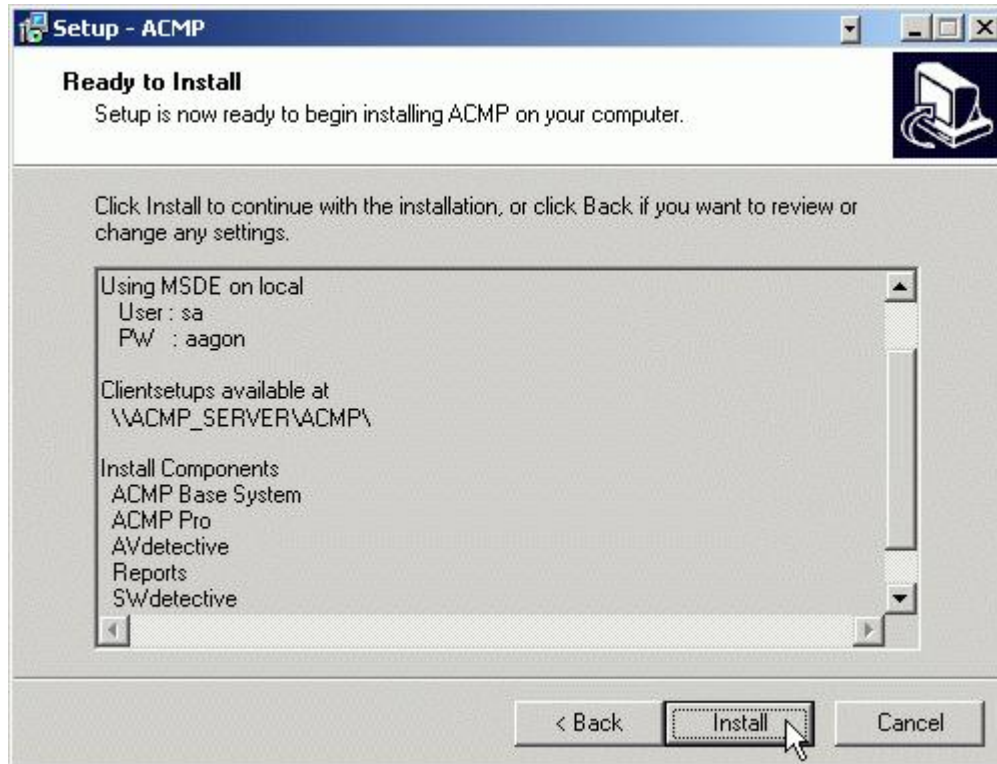
The *Custom installation* lets you choose the extra components to add to the basic ACMP system.



You can test ACMP limitedly. To use ACMP unlimitedly you have to buy the according licences.

2.10. Ready to Install

The panel shows overview of the settings and components selected for installation. *Back* when you need to make any adjustments.



If everything is correct press *Install* to start actual installation.

2.11. Completing the ACMP Setup

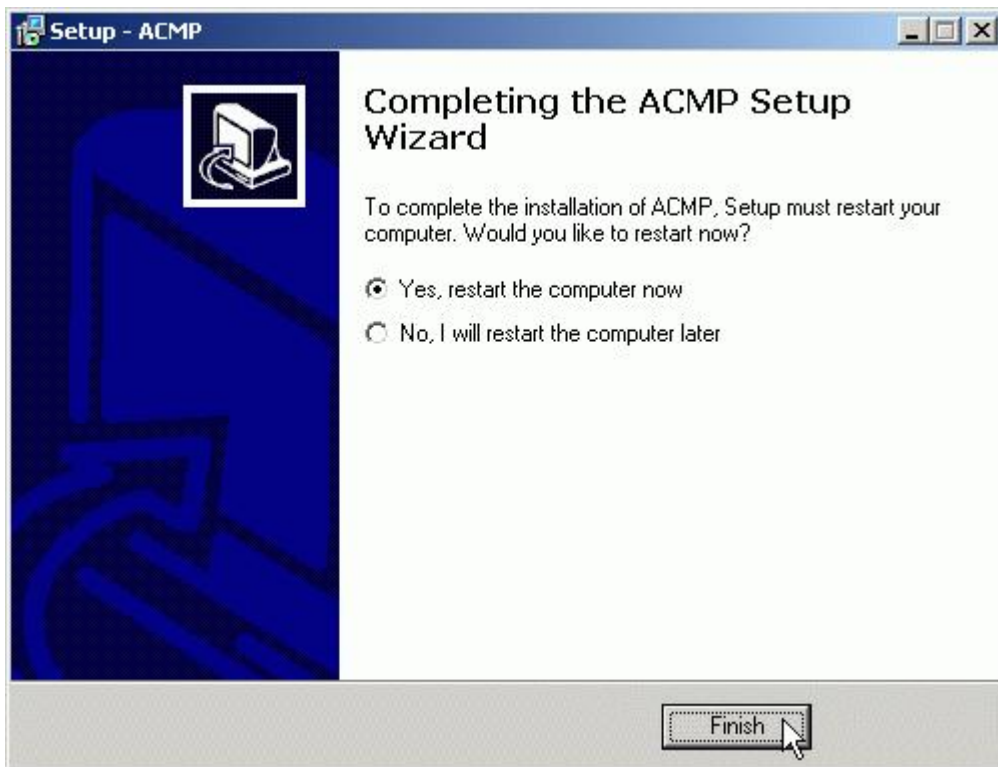
During installation you see on the screen what happens.

- if you're using an existing database, console and server will now be installed. Please be patient and wait until installation shows this final screen:



With *Finish* you end Setup. If the button *Show Product homepage* is still activated the homepage of Aagon Consulting GmbH will open now.

- If you install the provided MSDE-database this will be done first. After this a restart of your computer is necessary. Thus the program reports after installation with that screen:

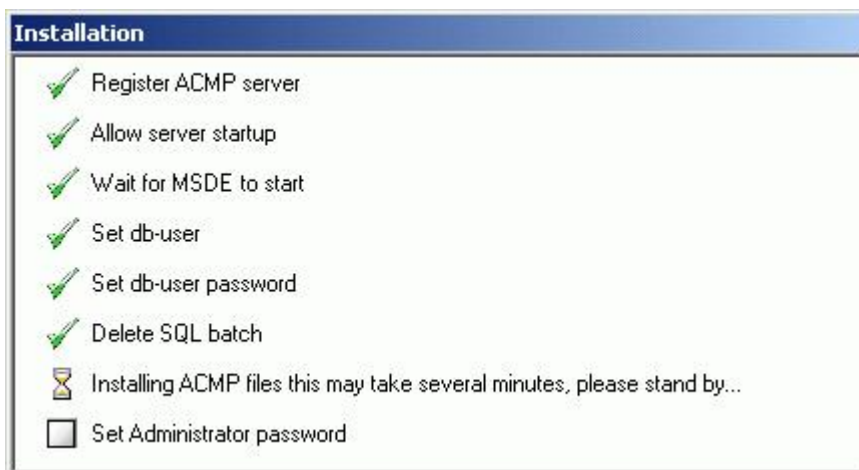


The button ☒ *Yes, restart the computer now* is activated.

If you want to restart later select ☐ *No, I will restart the computer later*. Then you have to do this manually.

With *Finish* you end Setup.

After restart of the computer the following window appears:



These points are executed one after the other. Please remember that meanwhile the database, the console and the server are installed.

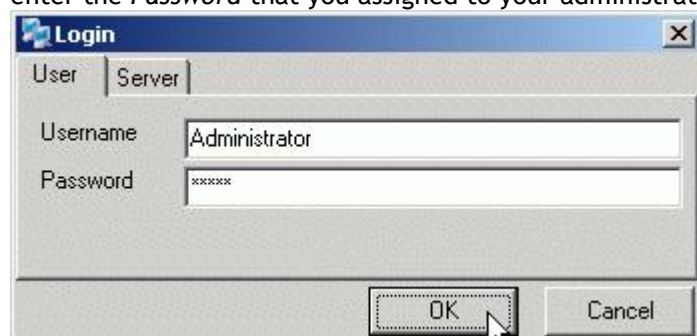
Diese Punkte werden nacheinander bearbeitet und abgehakt. Bitte bedenken Sie, dass währenddessen sowohl die Datenbank als auch die Konsole und der Server eingerichtet werden müssen. Depending upon efficiency of your computer that can take some minutes. Please be patient and wait until installation is completely finished and your usual user interface appears on the screen.

3. Client Management

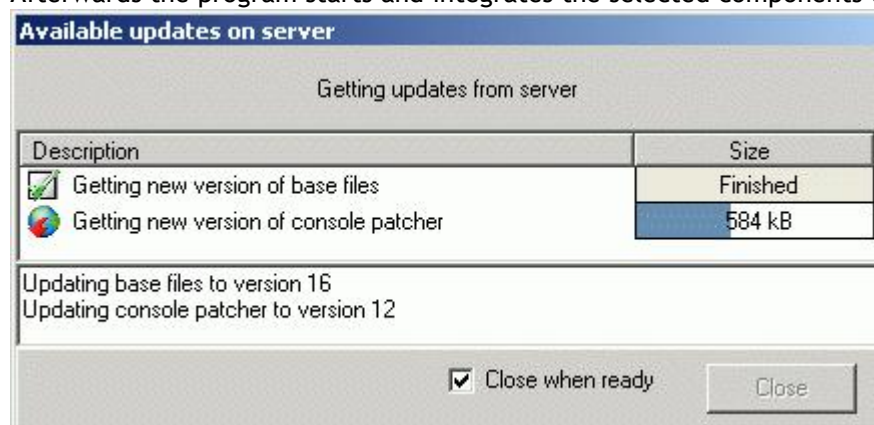
3.1. Starting the ACMP-Console



On the desktop of your computer you now will find this icon, with which you can start the Console. With the start of the program the *Username: Administrator* is indicated and you are requested to enter the *Password* that you assigned to your administrator during installation.

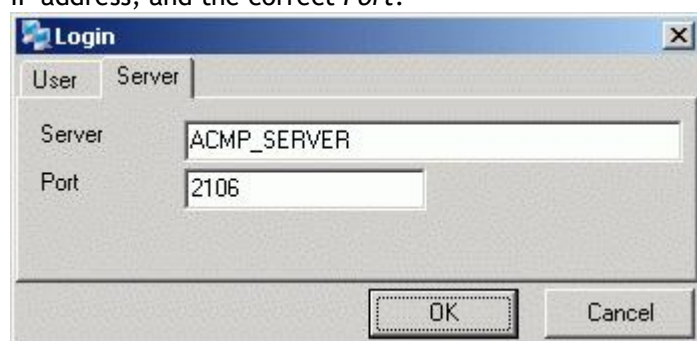


Afterwards the program starts and integrates the selected components to the Console.



If this is finished, the program restarts and you can begin to inventory your computers.

If you installed further Consoles within your company's network and you want after the start of the Console to connect to a different server, then you first must enter the correct *Username* and the *Password* in *User* tab. Then click the *Server* tab and enter the desired *Server*, either its name or its IP address, and the correct *Port*.

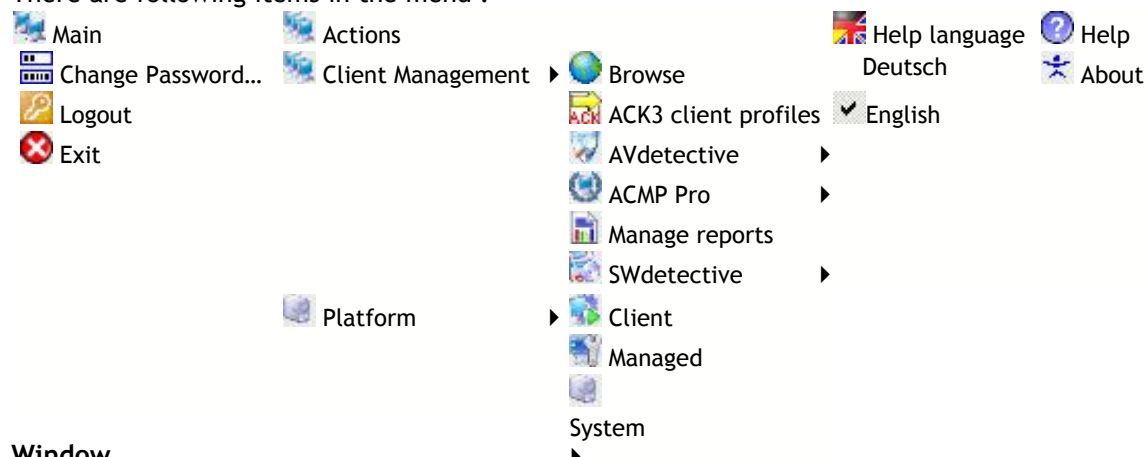


You will then be connected to this server, possibly missing plugins are automatically integrated and you can manage all the computers, which are administered from this server.

3.2. Console

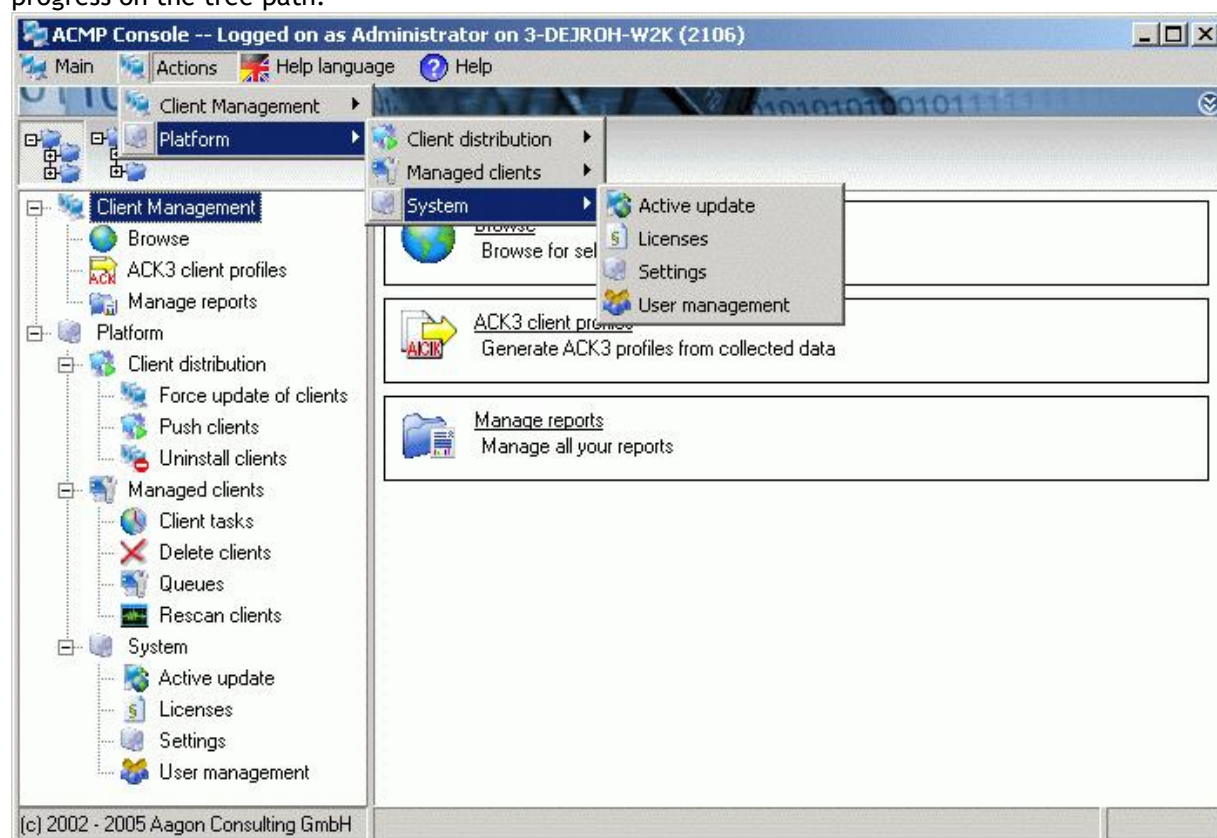
The Console includes all plugins, which were integrated with the first installation and will take up all further plugins, which you install later. Over the menu, the icons or the pushbuttons in the window you can start the programs.

There are following items in the menu :







Window

The left window shows all programs in the program tree, which have been included in the ACMP Console. The right window lets you select the main programs. New procedures appear along the progress on the tree path:



3.3. Integrating other Solutions

In order to include further Solutions into the ACMP, you have to use *Active update*. Start this program, by selecting in the Console

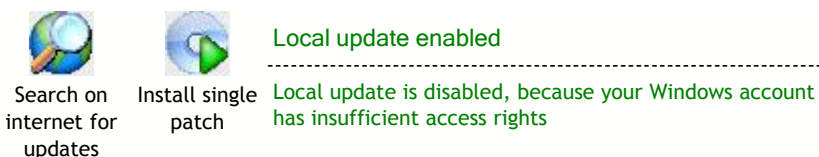
 Client Management -  Platform -  System -  Active Update

3.3.1. Active Update

This program will install updates and new modules to the *ACMP Console*.

Icons

You can use one of the two options on the toolbar:



Find the newest updates on the Aagon server with [Search on internet for updates](#).

[Install single patch](#) gets the updates from the CD or local or LAN disk folder.

Dialog boxes will lead you through the process.

Local update enabled: This note always appears, when the ACMP-Console is started on the computer, where the server service also is installed. It means that during an update the connection is made not by means of TCP/IP but directly by the file system of the computer. The advantage is in fact that updates can so be executed much faster and without load in the network.

Local update is disabled: This note always appears, when the ACMP-Console is started on the computer, where the server service also is installed; but you don't have enough rights for a local update. You can either login as a user with enough rights or use the update connection over TCP/IP.

List

Here is indicated which *Solutions* are already installed.

3.3.1.1. Search on internet

Update Configuration



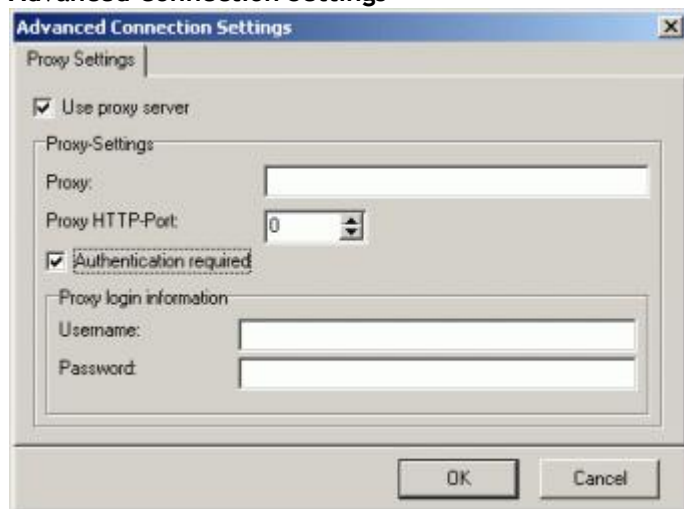
Server: Define the remote server where the updates are stored. At the time it is: **acmpupdate.aagon.com.**

Customer ID: These inputs

Password: remain empty.

If you use a proxy server for the internet connection go through *Advanced* settings.

Advanced Connection Settings



The dialog box 'Advanced Connection Settings' has a 'Proxy Settings' tab. It contains a checkbox 'Use proxy server' which is checked. Below it, there are input fields for 'Proxy' and 'Proxy HTTP Port' (set to 0). There is also a checkbox 'Authentication required' which is checked. Below that, there are input fields for 'Username' and 'Password'. At the bottom are 'OK' and 'Cancel' buttons.

Check the *Use Proxy Server* box and define the *Proxy* server and *Proxy HTTP port* parameters.

If the authentication is required check the relevant box and type *Username* and *Password*.

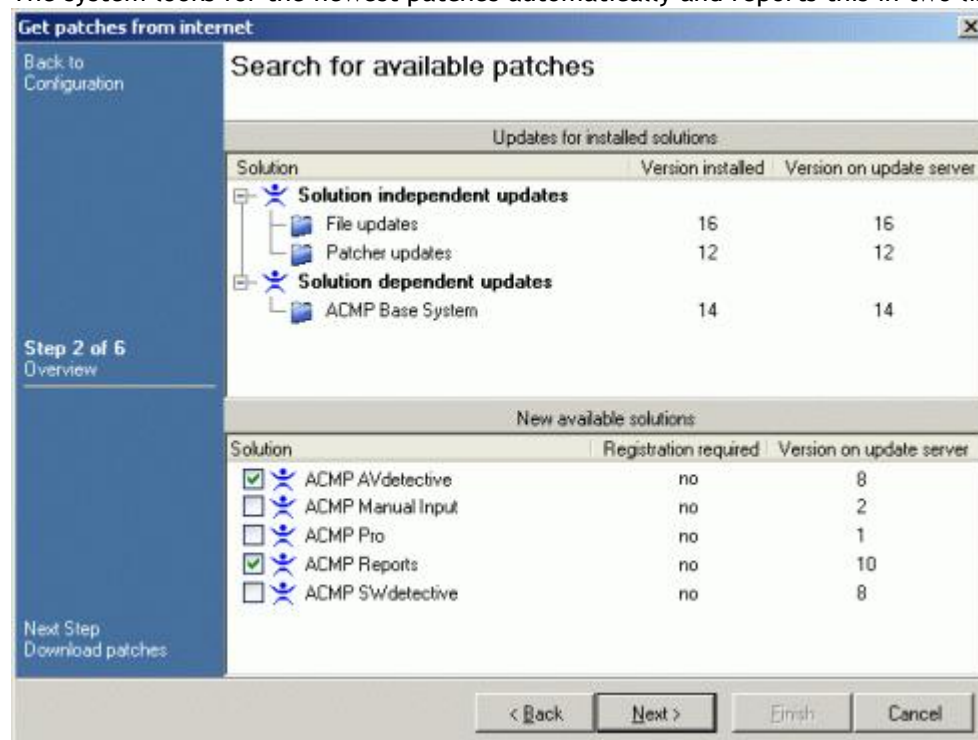
Both *OK* and *Cancel* send you to *Update Configuration*.

Test will check whether communication to **acmpupdate.aagon.com** is open and working.

Once the test succeeds the *Next* button will activate and let you search the location for new patches.

Search for available patches

The system looks for the newest patches automatically and reports this in two lists:



The dialog box 'Get patches from internet' has a 'Search for available patches' section. It contains two tables. The first table is 'Updates for installed solutions' and the second table is 'New available solutions'.

Solution	Version installed	Version on update server
Solution independent updates		
File updates	16	16
Patcher updates	12	12
Solution dependent updates		
ACMP Base System	14	14

Solution	Registration required	Version on update server
<input checked="" type="checkbox"/> ACMP AVdetective	no	8
<input type="checkbox"/> ACMP Manual Input	no	2
<input type="checkbox"/> ACMP Pro	no	1
<input checked="" type="checkbox"/> ACMP Reports	no	10
<input type="checkbox"/> ACMP SWdetective	no	8

At the bottom are buttons: '< Back', 'Next >', 'Finish', and 'Cancel'.

- **Updates for installed solutions**

This list consists of the columns *Solution*, *Version installed* and *Version on update server*. Among this you see a tree consisting of two branches:

Solution independent updates: Here all updates are indicated which pertain to the ACMP system independent from the installed solutions.

Solution dependent updates: Here all updates are indicated which were found in conjunction with the installed solutions.

Provided that the version number on the update server is higher than that one of the installed version, this is in addition shown by rows highlighted blue. These updates have to be installed in any case.

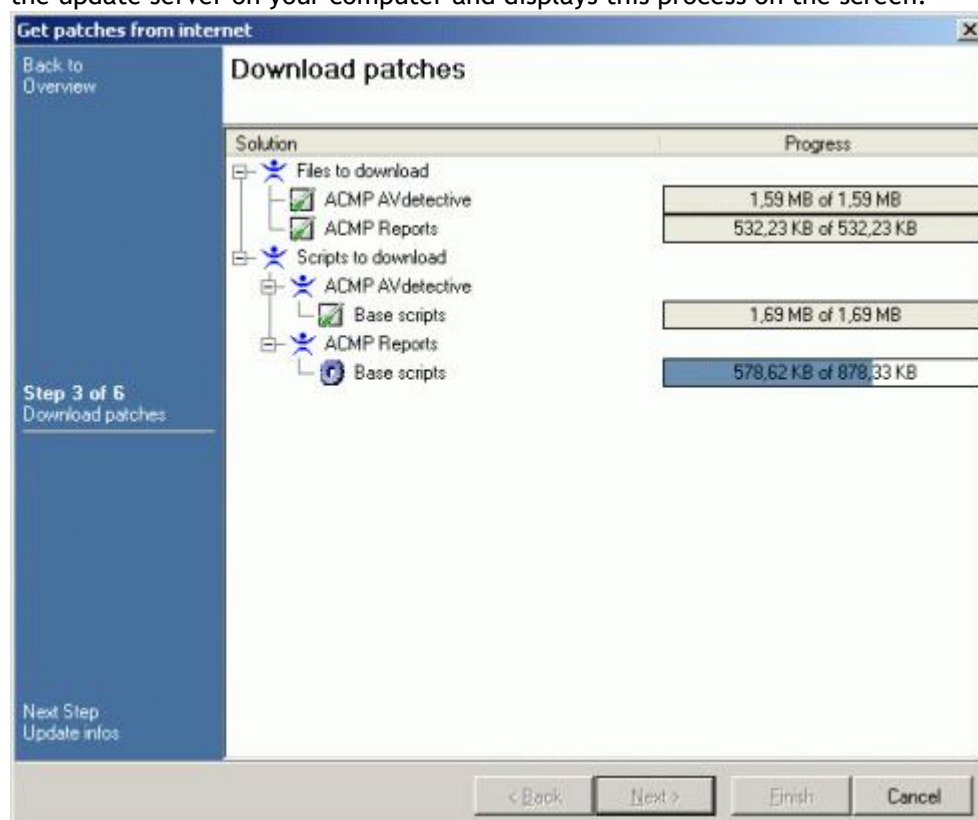
- **New available solutions**

Here you find other solutions in the columns *Solution* and *Version on update server* which can be installed optionally. You only have to activate the checkbox ☐ in front of the desired solution ☒.

With a click on the *Next* button the transfer to you computer starts.

Download patches

The program now automatically loads down all updates and selected solutions via the Internet from the update server on your computer and displays this process on the screen.



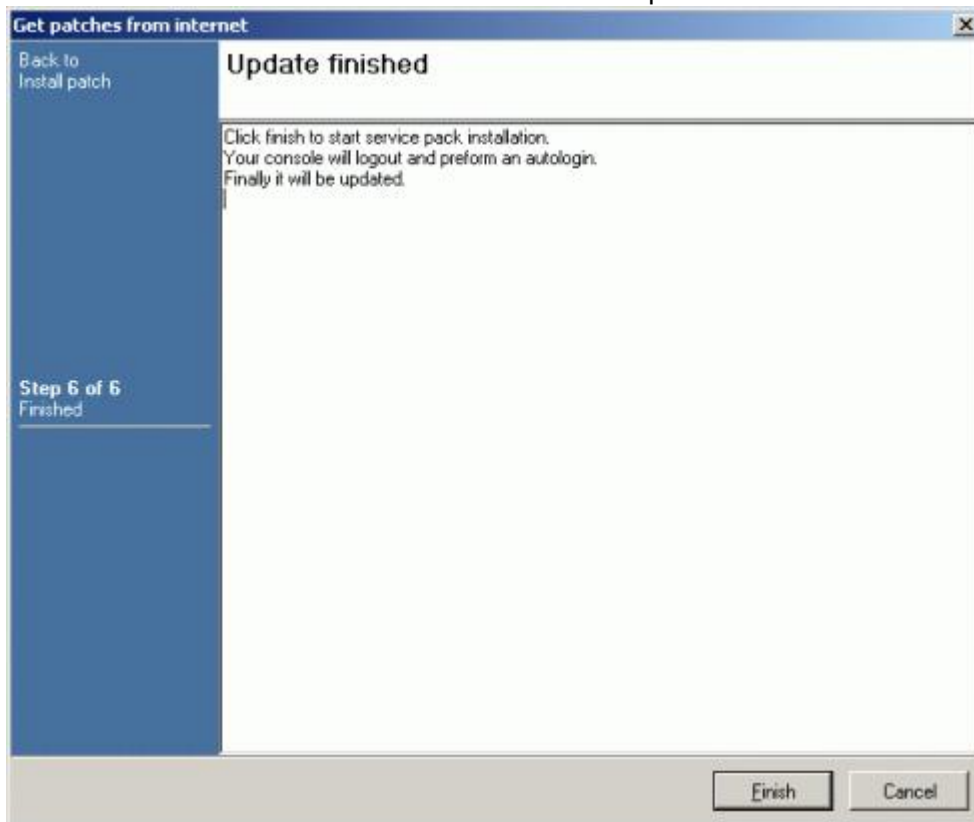
The individual packages are in the column *Solution*. You can pursue the progress in the *progress* column. As soon as a package is downloaded, it is marked with an ☒. After completion of all downloads the *Install patch* screen automatically opens.

Install patch

During the installation you see an animation.

Update finished

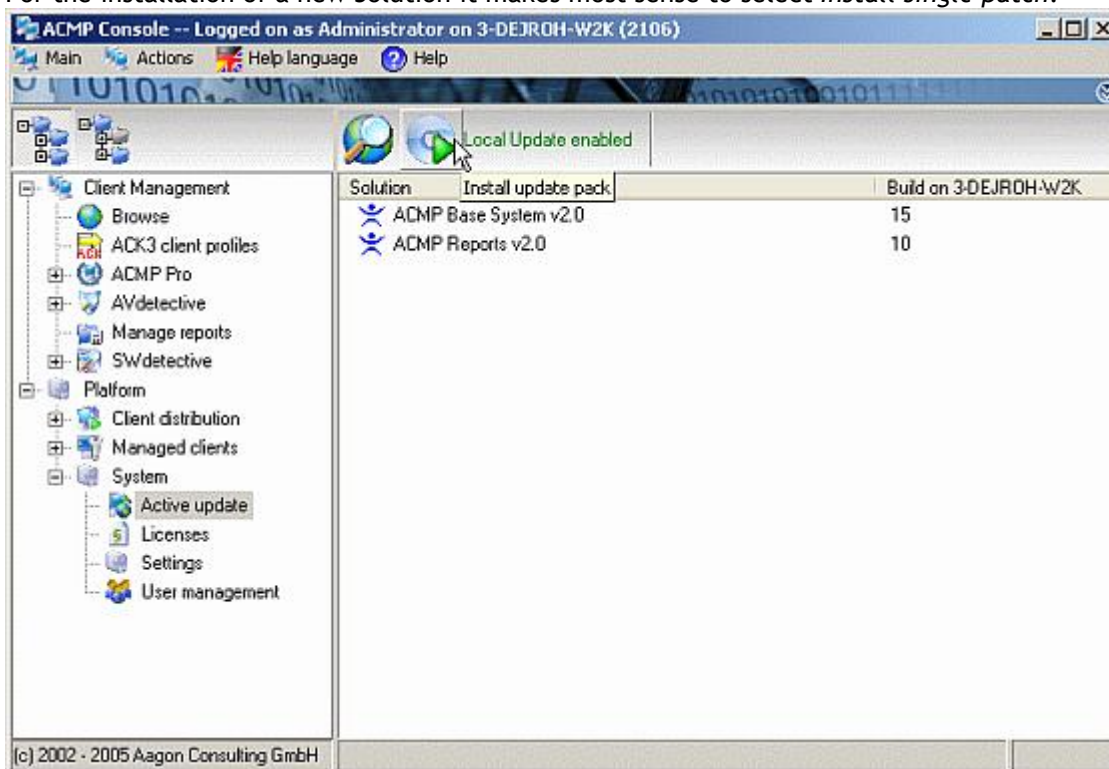
This screen announces information about the further procedure.



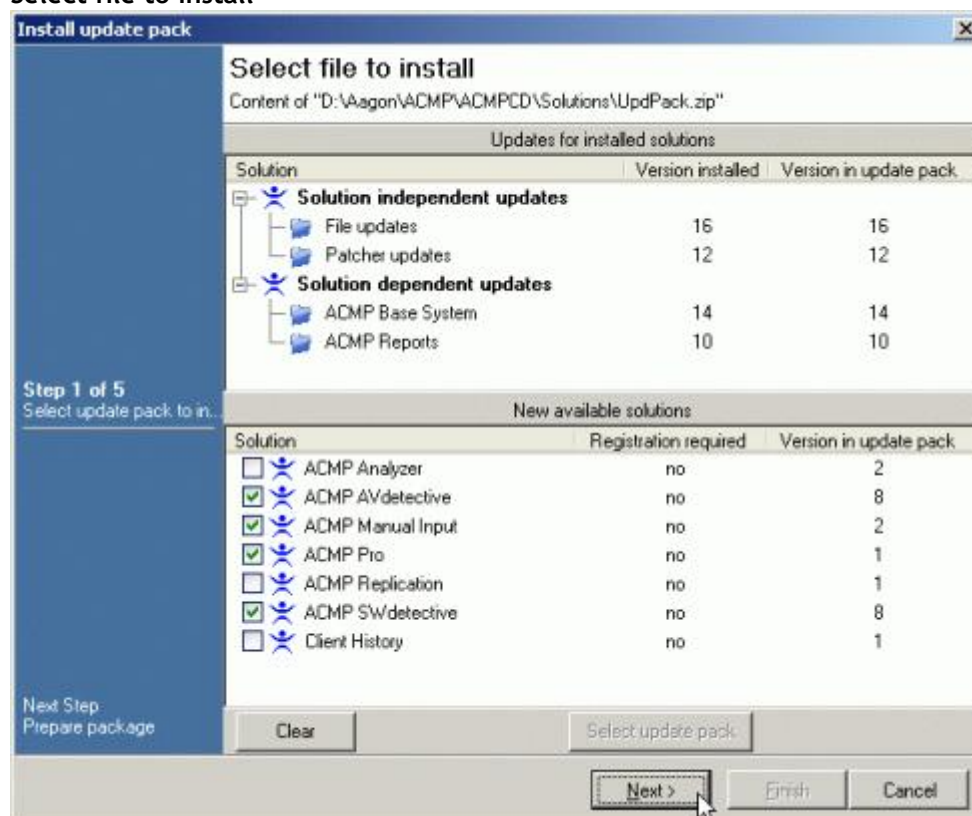
With *Finish* you exit the program. The *ACMP console* is now automatically restarted and the updates are finally integrated.

3.3.1.2. Install single patch

For the installation of a new Solution it makes most sense to select *Install single patch*.



Select file to install



The *Select update pack* button opens a standard dialog. Here you easily can look for updates on an ACMP-CD in the Solutions folder or within your own file system. Find the *UpdPack.zip* file, select it and confirm with *Open*. The available patches are shown in two lists:

- **Updates for installed solutions**

This list consists of the columns *Solution*, *Version installed* and *Version in update pack*. Among this you see a tree consisting of two branches:

Solution independent updates: Here all updates are indicated which pertain to the ACMP system independent from the installed solutions.

Solution dependent updates: Here all updates are indicated which were found in conjunction with the installed solutions.

Provided that the version number on the update server is higher than that one of the installed version, this is in addition shown by rows highlighted blue. These updates have to be installed in any case.

- **New available solutions**

Here you find other solutions in the columns *Solution* and *Version in update pack* which can be installed optionally. You only have to activate the checkbox ☐ in front of the desired solution ☒.

With a click on the *Next* button the preparation of the installation begins.

Prepare package

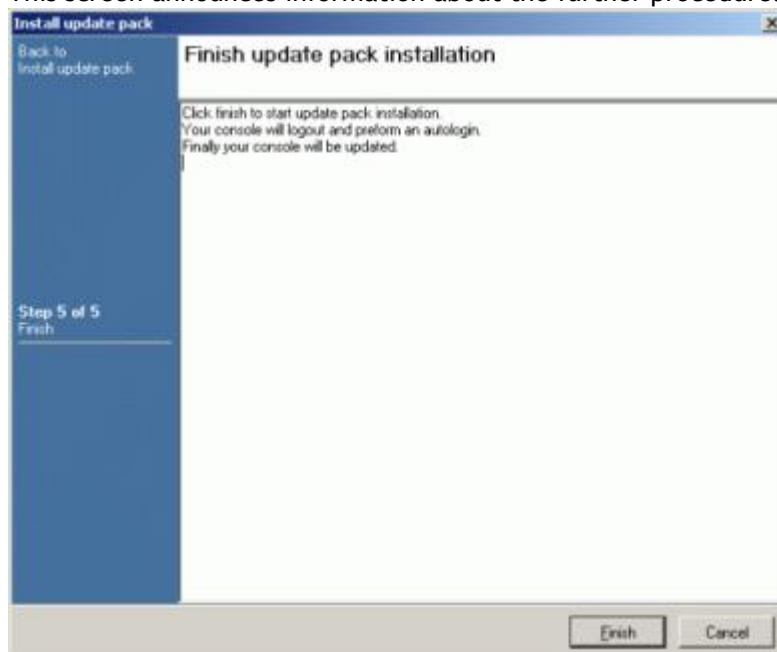
During the preparation you see an animation.

Install update pack

The same applies to the installation.

Update finished

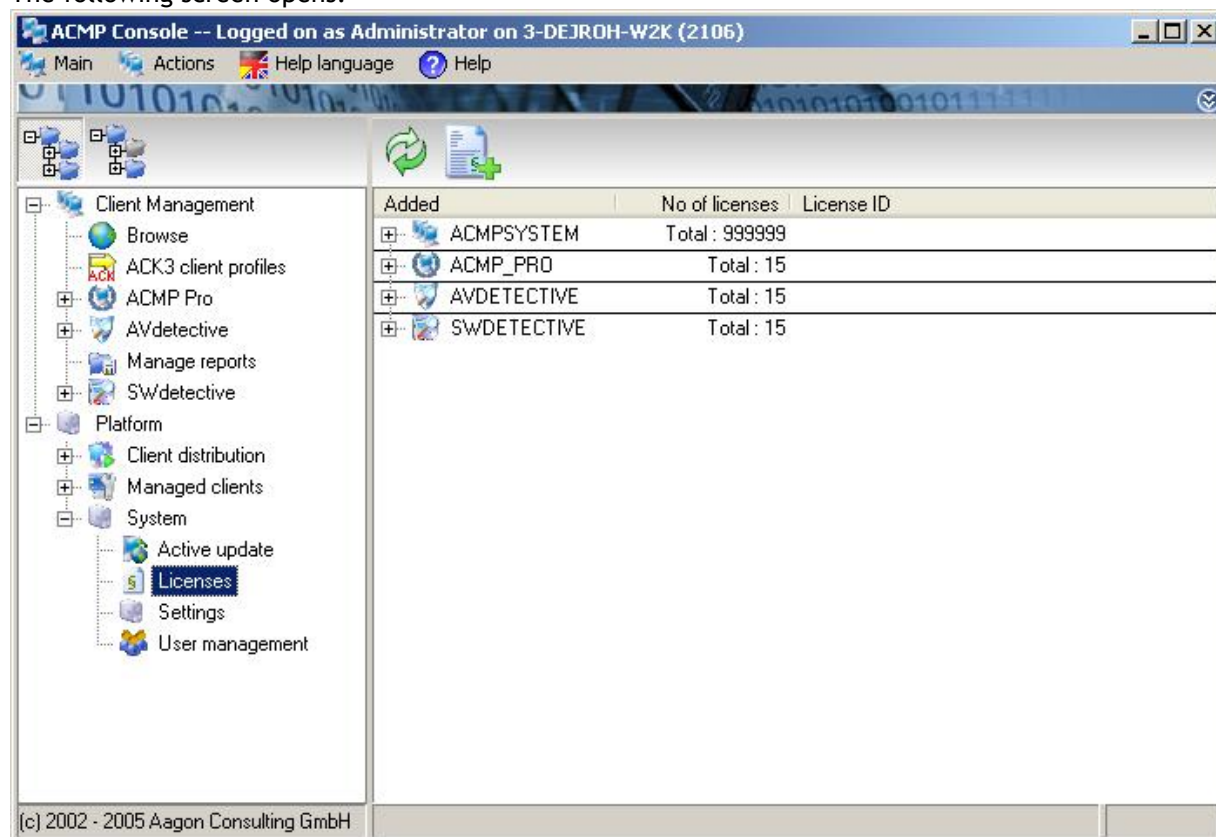
This screen announces information about the further procedure.



With *Finish* you exit the program. The *ACMP console* is now automatically restarted and the updates are finally integrated.

3.4. Registering new Licenses

In order to be able to use the new Plugins, you first have to licence them. Start the program *Licenses* by selecting *Client Management - Platform - System - Licenses* in the Console. The following screen opens:



Toolbar

Icons and function:



Refresh the screen.

Refresh




Add new license.

Add License

List

The list on the screen shows three columns.

Once you expand a detailed view of the license clicking on the  icon the following data about the licenses become available:

Added: date the license added.

No Of Licenses: number of licenses, (total displayed at the bottom line).

License ID: identifies the license.

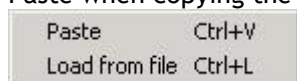
There are two kinds of licenses:

1. **Evaluation Keys:** These are not additive to other Evaluation Keys. *License ID* shows 'EVAL'.
2. **License Keys:** These Licenses are additive. *License ID* shows GUID.

You enter a new license clicking at . The *License data* screen shows...



...prompting you to type the license key. You obtain the key by e-mail or text file. Better use Copy-Paste when copying the key from e-mail message. Right click to obtain the context menu:



and paste the key.

Selecting *Load from file* you get a file browse screen to build the path to the key file. Open the file to have the key added. *Check* will show details of the license.

When the key is correct the following box shows:



Incorrect or repeated key insertion will generate an error message. OK will generate the license ID number and updates the list.

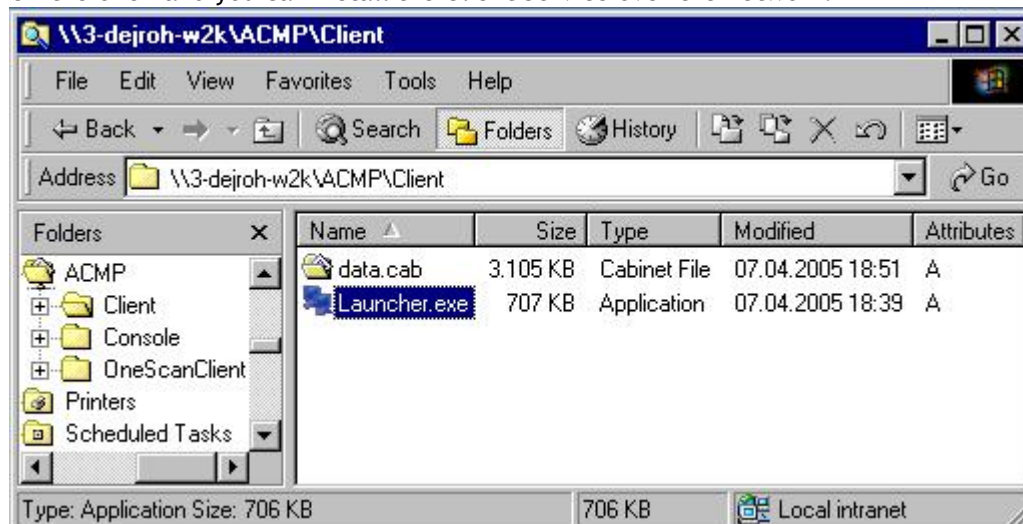
Note: Whenever new licenses are required, you must obtain the key and add as described. The bottom line will show the total number of licenses.

3.5. Installing the Client-Service

In order to install the Client Service on one of your clients, there are two possibilities:

1. Standard Client

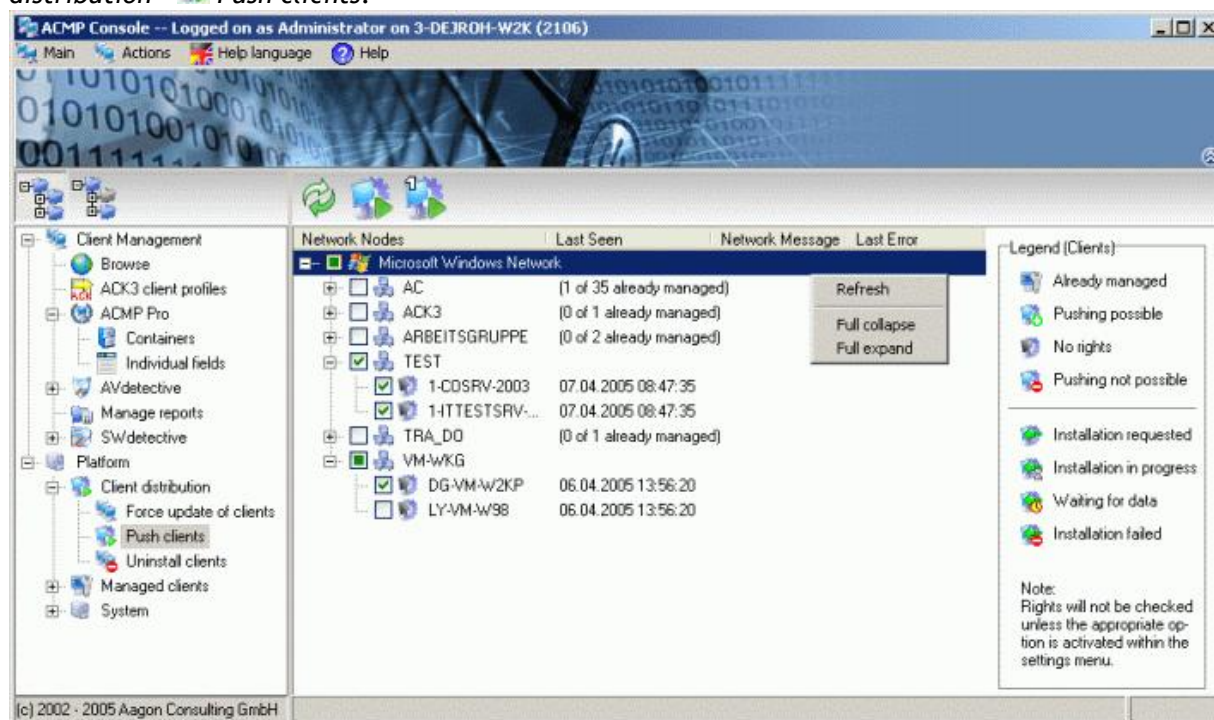
On the one hand you can install the Client Service over the network.





Start for example on the client the Explorer and search in the *Network* your ACMP_Server. Open the folder `\\ACMP_Server\ACMP\Client` and start the program *Launcher.exe*. After short time the program is installed and the service started.

On the other hand you can install the Client service from the ACMP Console.

Start in addition the Console and select  *Client Management* -  *Platform* -  *Client distribution* -  *Push clients*.



Open in the middle window the desired  domain and mark all computers, which are to receive the client service. A click on the  icon shows the following window:



Select either

Ⓐ *Use default installation account*



or Ⓑ *Use the following account information*

and enter *Username* and *Password* of a user that has the right to install services on the selected computers.

OK will launch the installation.

2. OneScanClient

If you don't want to install the Standard Client you can run the OneScanClient.

Go to the desired computer and open  *My Network Places* with doubleclick. Go over *Entire Network*, *Microsoft Windows Network*, *Domain/Workgroup* to your *ACMP Server*. Open there the folder `\\ACMP_Server\\ACMP\\OneScanClient` and start the  *OSCLnch.exe* by doubleclick. The computer data will be read once and send to the server.

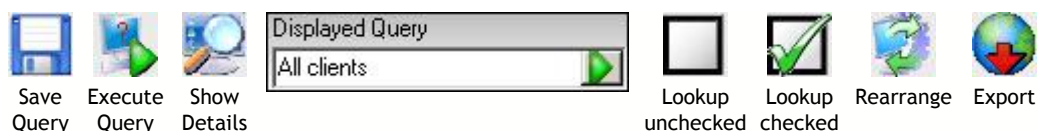
When you later create and execute a query, then in the ACMP Console the data of these Clients are indicated.


3.6. Query Management

The same query definition procedure applies whenever you need to retrieve data. A query needs to be executed to get the necessary data and information to manipulate the clients by any program. A query once defined and executed is available for any other task. So what you defined in, say, *Browse*, you can reuse in *Delete Managed Clients* or *AVdetective*.

Toolbar

The following tools are used to create and retrieve queries :



The remaining parts of the screen are empty and the icons gray till the first query is executed. Click on  icon to start definition. The [Available queries](#) window opens.

Grid

Once the query is completed the result grid may look like that:

Results | Display | Filters

Drag a column header here to group by that column

	Computer Domain ▴ ▾	Computer Name ▾	OS Name
<input type="checkbox"/>	ACMP	ACMP_Server	Windows 2000
<input type="checkbox"/>	MSI Software	Setup Software Name	
<input type="checkbox"/>	Netinstall Software	Aagon Client Management Plattform (Client)	
<input type="checkbox"/>	Setup Software	Aagon Client Management Plattform (Console)	
<input type="checkbox"/>		Aagon Client Management Plattform 1.0 (Server)	

Read [Grid](#) to learn how to filter the results to obtain a useful and transparent data.

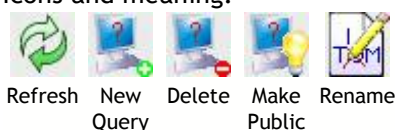
3.6.1. Available Queries



Most of the functions to manage the queries can be found here. You can create new queries, execute the existing, delete, rename and publish them.

Toolbar

Icons and meaning:





You must select an existing query to get access to all the icons. Otherwise only *Refresh* and *New Query* are active.

List

Query list is displayed under the icon bar in two groups:

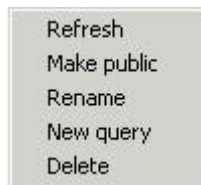
 **Public Queries:** This queries are available to all users.

 **Personal Queries:** This queries are available only to the author and the person authorized to use the specific console.

Expand the view with  to check which group the queries are assigned to. Double click on the selected query to execute it. The results will be displayed in the [Grid](#).

Context menu

Context menu repeats the toolbar functionality. Right click the mouse to display it. If the query has been selected all the options show, otherwise only *Refresh* and *New Query* are to chose from.



Refresh: update the view with *Refresh*. Useful when many users use the system at once.

Make public: shift the selected *Personal Query* to *Public Queries*.

Rename: renames the selected query.

New Query: opens the [Query Wizard](#), where new queries are defined.

Delete: deletes the selected query.






A warning message with confirmation prompt shows before deletion.

3.6.2. Query Wizard

The Query Wizard helps you creating your queries. It is designed in such way that you practically compose your queries by mouse clicks.



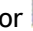
3.6.2.1. Select Fields to display





Here filters are created to adjust the query results. All the *Available fields* for the Filter wizard are listed under the  icon. Here you find additional branches like  *ACMP Client*,  *Hardware*,  *Network* or  *Operating System* with more branches depending on the installed solutions.

Folder

The features' folders are listed here. The content depends on the number of installed modules. The folders are described as follows:

Next to the expanding  icon either  or  is displayed with the name of group, say, *Clients*.

 icon marks the group containing fields which take only one value the query.

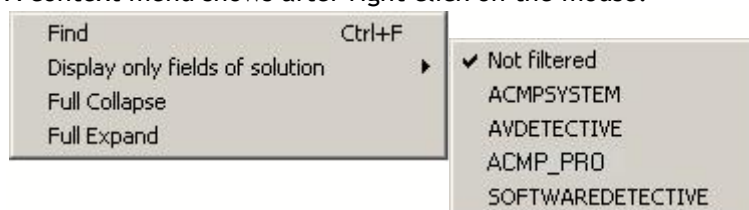
 marks the columns which may repeat in many instances. For example *Devices* or *Drives* are repeatable as the client station may have many drives and always features many devices.

Additionally, ACMPSYSTEM contains *Clients*, *CPU*, *Devices*, *Display*, *Drivers*, *Memory*, *Operating System*, *Printers* and *Solutions*;

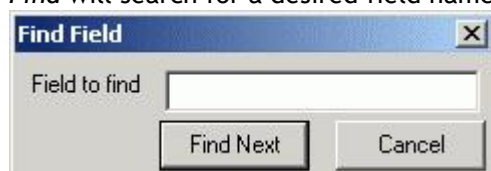
AVDETECTIVE contains *AV-Solution McAfee*, *AV-Solution Symantec*, *AV-Solution Trend Micro* and *AV-Solution FProt*;

SOFTWAREDETECTIVE contains *Installed Software*, *MSI* and *NetInstall Software*.

A context menu shows after right click on the mouse:





- *Find* will search for a desired field name in the data base:




any part of the field name will do. Click *Find Next* till you find what you are interested in.

- Clicking on *Display only fields of solution* you will get the list of available solutions (or *not filtered*). When a solution is selected, only the fields relevant for it will remain in the view.

Field selection

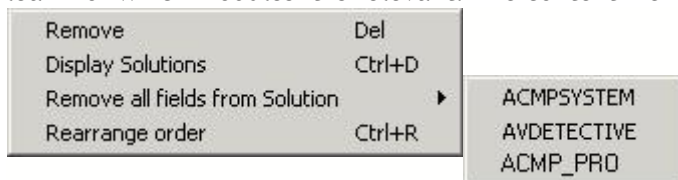
Expand the group clicking on  icon. Each field name is preceded with  icon. Double click the field or drag it to the right panel to select it.



The selected field will show in the right panel while its row in the left one will get a blue background to mark, that is has already been used. Click on  collapses the view.

Repeat till you move all interesting fields to the right panel.

The right panel features *Field* and *Sort* columns. Right click with the mouse cursor on the field to learn for which modules it is relevant. The context menu will show::



You may *Remove* unwanted fields.

Display Solutions or *Ctrl+D* lists the relevant solutions: ACMPSYSTEM, AVDETECTIVE or other.


Remove all Fields from Solution shows the list of solutions. When a solution is selected, the fields relevant to it will disappear.

Rearrange order or *Ctrl+R* opens the *Rearrange display order* window where the field order can be



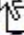




manipulated. Select the field and use *First* *Up* *Down* *Last* arrows to position it at the right place.





Sort and adjustment

You may introduce some modifications to adjust. To change the fields order click on  icon, and drag it to the place of choice.

Example:

Field	Sort	Solution	Raw
 Computer Domain	<input type="checkbox"/>	ACMPSYSTEM	<input type="checkbox"/>
 ACMP Is Manag...	<input type="checkbox"/>	ACMPSYSTEM	<input type="checkbox"/>
 ACMP Is Running	<input type="checkbox"/>	ACMPSYSTEM	<input checked="" type="checkbox"/>
 Computer Name		ACMPSYSTEM	<input type="checkbox"/>

The *Computer Name* field will move over *ACMP Is Managed*.

Field	Sort	Solution	Raw
 ACMP Is Running	<input type="checkbox"/>	ACMPSYSTEM	<input checked="" type="checkbox"/>
 Computer Domain	<input type="checkbox"/>	ACMPSYSTEM	<input type="checkbox"/>
 Computer Name	<input type="checkbox"/>	ACMPSYSTEM	<input type="checkbox"/>
 ACMP Is Manag...	<input type="checkbox"/>	ACMPSYSTEM	<input type="checkbox"/>

The *ACMP Is Running* field will move under *Computer Name*.

The sort switch gets the following values:



, not sorted.



, sort increasing.



, sort decreasing.

Only one value applies.

If you activate the checkbox ☒ *Raw*, the value in the *Grid* will be shown, as it is stored in the data base.

Examples: If McAfee is installed instead of *Installed* an *1* shows, if it is not installed instead of *Not Installed* a *0* shows.

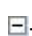
Information about capacities of hard disks and memory are **always** shown in Kilobyte, if the checkbox ☒ *Raw* is activated. Otherwise the values are converted and shown together with the according scale unit in KB, MB or GB.

Next sends you to *Select filters* screen. If no filter is selected an error message shows.

3.6.2.2. Select filters

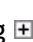





Here filters are created to adjust the query results. All the *Available fields* for the Filter wizard are


listed under the  icon.

Folder

The features' folders are listed here. The content depends on the number of installed modules. The folders are described as follows:

Next to the expanding  icon either  or  is displayed with the name of group, say, *Clients*.

 icon marks the group containing fields which take only one value the query.

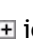

 marks the columns which may repeat in many instances. For example *Devices* or *Drives* are repeatable as the client station may have many drives and always features many devices.

Additionally, ACMPSYSTEM contains *Clients*, *CPU*, *Devices*, *Display*, *Drivers*, *Memory*, *Operating System*, *Printers* and *Solutions*;

AVDETECTIVE contains *AV-Solution McAfee*, *AV-Solution Symantec*, *AV-Solution Trend Micro* and *AV-Solution FProt*;

SOFTWAREDETECTIVE contains *Installed Software*, *MSI* and *NetInstall Software*.

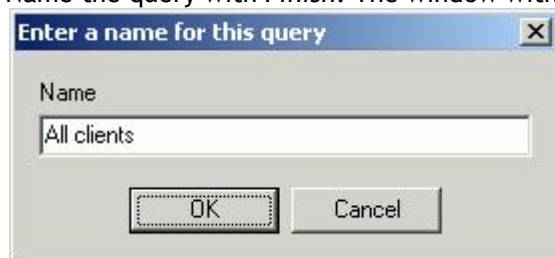
Field selection

Expand the group clicking on  icon. Each field name is preceded with  icon. Double click the field or drag it to the right panel to select it. The panel that opens lets you specify the filtering criteria. Note that the system provides for different criteria sets depending on the data type of the field selected. The criterion's data type is referred to as:

- *Date/Time Filter*
- *IP Filter*
- *Number Filter*
- *Memory Filter*
- *String Filter*

If you mark the radio button *Specify at execution* the criterion will be set 'Dynamically', that is you will be prompted for the criterion at the execution. Once the criteria are set you see the fields list with the criteria in the rightmost panel. Repeat till all criteria are set. You can also add criteria which are not attached to specific fields.

Name the query with *Finish*. The window with a name prompt opens:



Overtyping the *Name* field to name the query as you want. *OK* will save the query and run it.

3.6.3. Grid

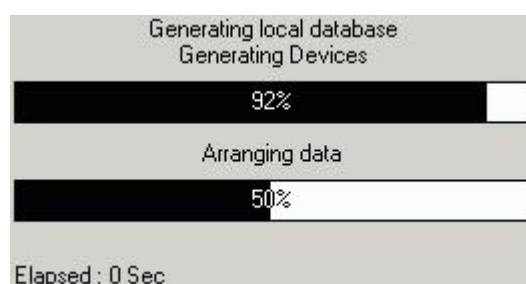
The grid is there to represent the results of your Queries at the screen clearly.

3.6.3.1. Results

Here your queries are executed and indicated. If you selected the option *Specify at execution*, the appropriate window will appear before the execution of the query and you can specify your filters:

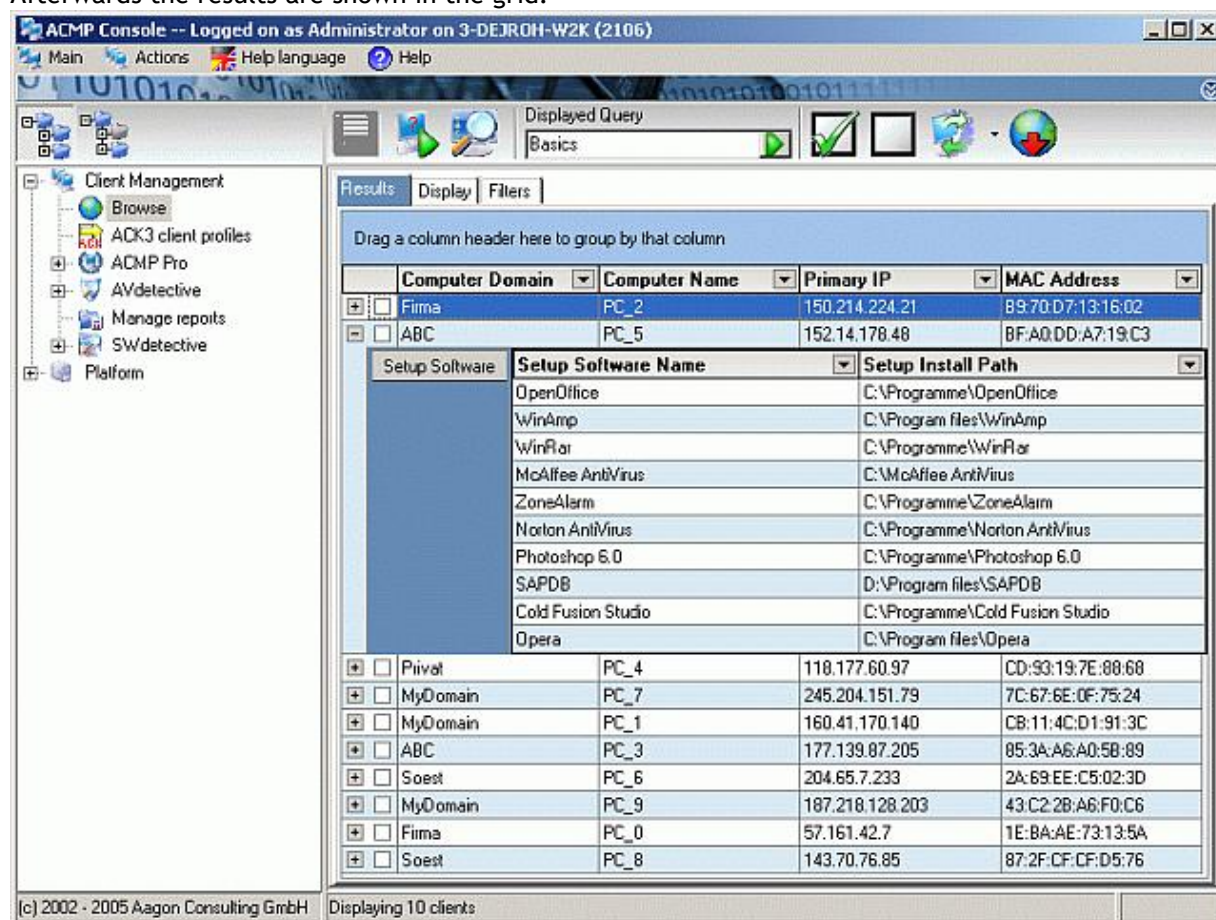
- *Date/Time Filter*
- *IP Filter*
- *String Filter*
- *Number Filter*
- *Memory Filter*

Then briefly two progress bars appear, with which you can watch the execution.



Grid

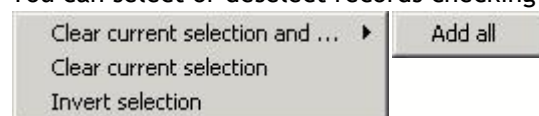
Afterwards the results are shown in the grid.





There are 3 tabs on the grid panel:

- *Results*
- *Display*
- *Filters*

The grid header features the: *Drag a column header here to group by that column* instruction (see Group) under which the records are displayed. There are a number of tools to arrange the display. You can select or deselect records checking ☒ or unchecking ☐. Right click opens the context menu:




This is particularly useful when you want to invert selection.


If there are multivalued fields in the query  each record features expansion icon  which opens a sub-grid with the field values. This sub-grid may feature further buttons to drill down to the information. The field groups are represented by the tabs in the sub-grid. Click the tab to get to the

information related to the field group.

Sort



You can sort the results at will according to standard SQL convention where the following columns sort within the preceding ones. Thus you need to change the column order which you may do dragging the column header left or right. The sort order is changed by clicking on the column header. A triangle icon  shows the sort order.

Filter

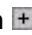
Apart from filters included in the query you can apply view filters. Click on  icon to add a view filter. A drop down let you define the filter. If you selected, say, the Domain column, all the domains will show if you select all, but only one if you select the specific one from the list. The status bar at the grid bottom will show the filter applied:

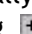


When you select a value from the list the Equal operator applies to the value but you may build complex criteria selecting the *(Custom)* filter which opens the window where operators can be chosen.

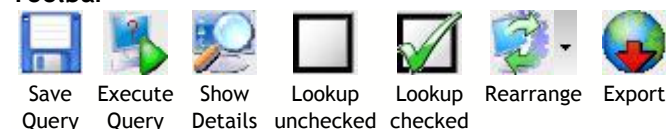
Click on  on the status bar to remove the view filter or turn it off for a while checking the  field.

Group

You may group the results by the columns. Simply drag the column header to the area marked with *Drag a column header here to group by that column*. Grouping is immediate. If for example, you use the *Domain* header for grouping the records will group by domain. Each line shown will feature the expanding button  which clicked will display the records within the group, in this case all the client stations selected by the query which belong to the domain.

You can group according to various parameters. Dragging another header to the grouping area will group hierarchically with the later column grouping within the former. You can drill down for information using  button at each level.

Toolbar







Icons and what they do:


Save Query: Saves the current query.

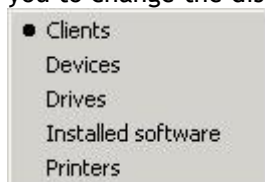
Execute Query: Executes the query ignoring temporary view filters.

Show Details: Opens a new window where you can look at all [details](#) of the selected computer.

Lookup unchecked: If some stations are checked , the system will filter only unchecked  stations. Rerun the query to get the full results.

Lookup checked: If some stations are checked , the system will filter only checked  stations. Rerun the query to get the full results.

Rearrange: If there are many multivalue fields  in the query clicking *Rearrange* will allow you to change the display sort. You will get the context menu:



The default sort is *Clients*. Other choice will change sort. Note: when you chose to sort according to multivalued field, each Client will be shown that many times as many values the sorting field takes.

Export: Open the wizard which will export the data to CSV format (comma-separated-variables). This format is imported to all typical applications like Excel.

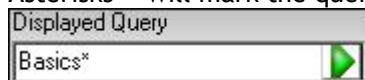
3.6.3.2. Display



Go to this tab to modify the query: add or remove columns.

The window structure is the same as [Select Fields to display](#), you learned creating the query.

Asterisks * will mark the query name after modification:



Once the query is saved  with *Save Query* the asterisk * disappears.

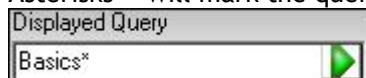
3.6.3.3. Filters



Use this tab to modify the query filters.

The structure and functionality is the same like [Select filters](#) already described.

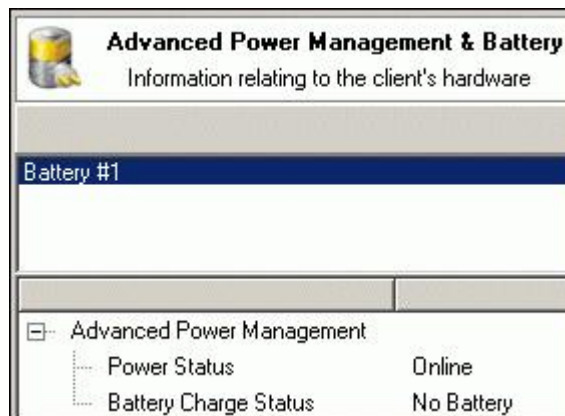
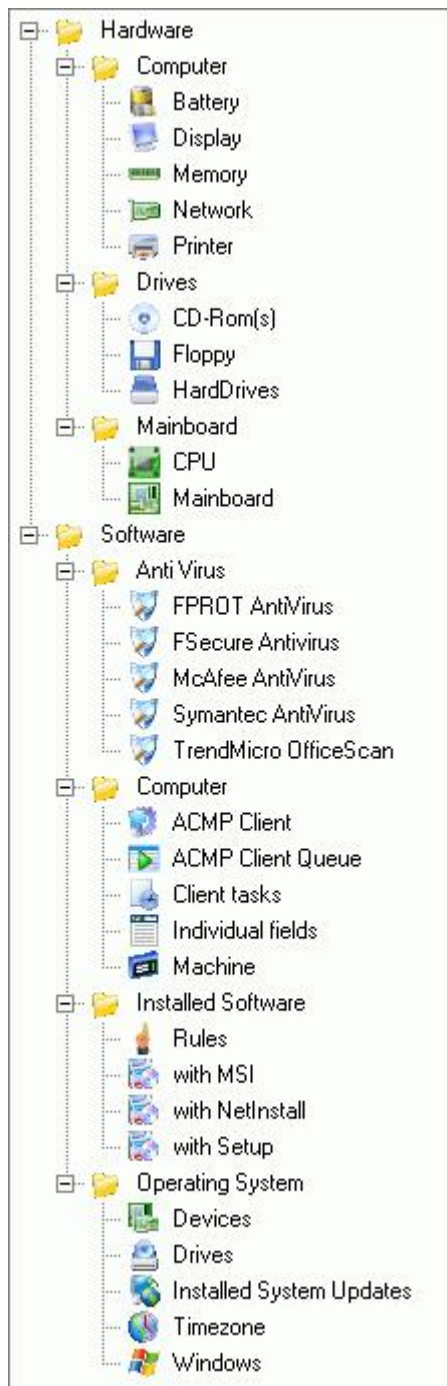
Asterisks * will mark the query name after modification:



Once the query is saved  with *Save Query* the asterisk * disappears.

3.6.3.4. Show Details

Depending on the number of installed solutions you see on the left a tree with the following content:




Client tasks and *Individual fields* form an exception. Here you can also make and store inputs.

Client tasks

First switch on the checkbox ☒ *Enable special settings*. Thus the display of the tasks is activated. With a doubleclick on the desired task the window *Start Conditions* opens, and you can make your changes. Which settings you can make here, you learn in the section *Client tasks* under *Change Scanner Settings*. **The changes exclusively apply to the client, which you selected and have priority before all other Scanner Settings!**

In order to reset the settings, simply switch off the checkbox ☐ *Enable special settings* again.

Individual fields

These values are only shown, if the solution *Individual fields* is installed. The list in the right window shows the *Fieldname* and under *Value* the value registered so far. With a doubleclick on the desired line a window opens, in which you can edit the value. Changed values are printed afterwards in **boldface**. With a click on  the changes are stored.

Index

		Select Fields to display	39
- A -			
ACMP Setup	6		
ACMP Setup	6		
Acrobat Reader	6		
Browse CD	6		
Exit	6		
Manuals	6		
Active Update	21		
Install single patch	21		
Logged on to local server	21		
Search on internet...	21		
Available Queries	31		
Context menu	31		
Delete	31		
Grid	31		
List	31		
Make public	31		
New Query	31		
Personal Queries	31		
Public Queries	31		
Query Wizard	31		
Refresh	31		
Rename	31		
Toolbar	31		
- C -			
Console	20		
Menu	20		
Window	20		
- D -			
Display	39		
Displayed Query	39		
Save Query	39		
- F -			
Filters	40		
Displayed Query	40		
Save Query	40		
Select filters	40		
- G -			
Grid	36		
- I -			
Install single patch	25		
Add	25		
Cancel	25		
Clear	25		
Filename	25		
Finish	25		
Next	25		
Patch	25		
Solution	25		
Installing the Client-Service	29		
OneScanClient	29		
Push clients	29		
Standard Client	29		
Use default installation account	29		
Use the following account information	29		
Integrating other Solutions	21		
- L -			
License Agreement	8		
Back	8		
Cancel	8		
I accept the agreement	8		
Next	8		

- P -		Execute Query	36
Preface	5	Export	36
How does the ACMP work?	5	Filter	36
Solutions	5	Filters	36
Structure	5	Grid	36
The system requirements	5	Group	36
What is ACMP for?	5	Lookup checked	36
- Q -		Lookup unchecked	36
Query Management	31	Rearrange	36
Available queries	31	Save Query	36
Grid	31	Show Details	36
Icons	31	Sort	36
Query Wizard	33	- S -	
- R -		Search on internet	21
Ready to Install	16	Advanced Settings	21
Back	16	Authentication required	21
Finish	16	Cancel	21
Install	16	Customer ID	21
Registering new Licenses	27	Next	21
Added	27	OK	21
Cancel	27	Password	21
Check	27	Proxy HTTP-Port	21
Evaluation Keys	27	Proxy Server	21
License data	27	Server	21
License ID	27	Start	21
License Keys	27	Test	21
List	27	Use Proxy Server	21
Load from file	27	Username	21
No of Licenses	27	Select ACMP administrator password	14
OK	27	Select Communication Ports	13
Paste	27	Client Port	13
Toolbar	27	Server Port	13
Results	36	Select Components	15
Display	36	Compact installation	15

Select Components	15	String filter	35
Custom installation	15	Value	35
Full installation	15	Select SQL-Database Connection	10
Select Database Connection Account	11	Existing MS SQL-Server	10
Database Password	11	Install MSDE on this computer	10
Database User	11	Sharing client programs	12
Select Destination Directory	9	Sharename	12
Select Fields to display	33	Show Details	41
Available Fields	33	Client tasks	41
Cancel	33	Enable special settings	41
Display only fields...	33	Fieldname	41
Display Solutions	33	Individual fields	41
Field	33	Value	41
Field selection	33	Starting the ACMP-Console	19
Find	33	Password	19
Find Next	33	Username	19
Folder	33		
Next	33	- W -	
Raw	33	Welcome	7
Rearrange order	33		
Remove all Fields...	33		
Remove Del	33		
Sort	33		
Sort and adjustment	33		
Select filters	35		
Available Fields	35		
Date/Time filter	35		
Field	35		
Field selection	35		
Finish	35		
Folder	35		
IP Filter	35		
Memory Filter	35		
Number filter	35		
OK	35		