



N1 Grid Engine 6 Installation Guide

Sun Microsystems, Inc.
4150 Network Circle
Santa Clara, CA 95054
U.S.A.

Part No: 817-6118-24
May 2005

Copyright 2005 Sun Microsystems, Inc. 4150 Network Circle, Santa Clara, CA 95054 U.S.A. All rights reserved.

This product or document is protected by copyright and distributed under licenses restricting its use, copying, distribution, and decompilation. No part of this product or document may be reproduced in any form by any means without prior written authorization of Sun and its licensors, if any. Third-party software, including font technology, is copyrighted and licensed from Sun suppliers.

Parts of the product may be derived from Berkeley BSD systems, licensed from the University of California. UNIX is a registered trademark in the U.S. and other countries, exclusively licensed through X/Open Company, Ltd.

Sun, N1, Sun Microsystems, the Sun logo, docs.sun.com, AnswerBook, AnswerBook2, N1 and Solaris are trademarks or registered trademarks of Sun Microsystems, Inc. in the U.S. and other countries. All SPARC trademarks are used under license and are trademarks or registered trademarks of SPARC International, Inc. in the U.S. and other countries. Products bearing SPARC trademarks are based upon an architecture developed by Sun Microsystems, Inc.

The OPEN LOOK and Sun™ Graphical User Interface was developed by Sun Microsystems, Inc. for its users and licensees. Sun acknowledges the pioneering efforts of Xerox in researching and developing the concept of visual or graphical user interfaces for the computer industry. Sun holds a non-exclusive license from Xerox to the Xerox Graphical User Interface, which license also covers Sun's licensees who implement OPEN LOOK GUIs and otherwise comply with Sun's written license agreements.

U.S. Government Rights – Commercial software. Government users are subject to the Sun Microsystems, Inc. standard license agreement and applicable provisions of the FAR and its supplements.

DOCUMENTATION IS PROVIDED "AS IS" AND ALL EXPRESS OR IMPLIED CONDITIONS, REPRESENTATIONS AND WARRANTIES, INCLUDING ANY IMPLIED WARRANTY OF MERCHANTABILITY, FITNESS FOR A PARTICULAR PURPOSE OR NON-INFRINGEMENT, ARE DISCLAIMED, EXCEPT TO THE EXTENT THAT SUCH DISCLAIMERS ARE HELD TO BE LEGALLY INVALID.

Copyright 2005 Sun Microsystems, Inc. 4150 Network Circle, Santa Clara, CA 95054 U.S.A. Tous droits réservés.

Ce produit ou document est protégé par un copyright et distribué avec des licences qui en restreignent l'utilisation, la copie, la distribution, et la décompilation. Aucune partie de ce produit ou document ne peut être reproduite sous aucune forme, par quelque moyen que ce soit, sans l'autorisation préalable et écrite de Sun et de ses bailleurs de licence, s'il y en a. Le logiciel détenu par des tiers, et qui comprend la technologie relative aux polices de caractères, est protégé par un copyright et licencié par des fournisseurs de Sun.

Des parties de ce produit pourront être dérivées du système Berkeley BSD licenciés par l'Université de Californie. UNIX est une marque déposée aux Etats-Unis et dans d'autres pays et licenciée exclusivement par X/Open Company, Ltd.

Sun, Sun Microsystems, le logo Sun, docs.sun.com, AnswerBook, AnswerBook2, et Solaris sont des marques de fabrique ou des marques déposées, de Sun Microsystems, Inc. aux Etats-Unis et dans d'autres pays. Toutes les marques SPARC sont utilisées sous licence et sont des marques de fabrique ou des marques déposées de SPARC International, Inc. aux Etats-Unis et dans d'autres pays. Les produits portant les marques SPARC sont basés sur une architecture développée par Sun Microsystems, Inc.

L'interface d'utilisation graphique OPEN LOOK et Sun™ a été développée par Sun Microsystems, Inc. pour ses utilisateurs et licenciés. Sun reconnaît les efforts de pionniers de Xerox pour la recherche et le développement du concept des interfaces d'utilisation visuelle ou graphique pour l'industrie de l'informatique. Sun détient une licence non exclusive de Xerox sur l'interface d'utilisation graphique Xerox, cette licence couvrant également les licenciés de Sun qui mettent en place l'interface d'utilisation graphique OPEN LOOK et qui en outre se conforment aux licences écrites de Sun.

CETTE PUBLICATION EST FOURNIE "EN L'ETAT" ET AUCUNE GARANTIE, EXPRESSE OU IMPLICITE, N'EST ACCORDEE, Y COMPRIS DES GARANTIES CONCERNANT LA VALEUR MARCHANDE, L'APTITUDE DE LA PUBLICATION A REpondre A UNE UTILISATION PARTICULIERE, OU LE FAIT QU'ELLE NE SOIT PAS CONTREFAISANTE DE PRODUIT DE TIERS. CE DENI DE GARANTIE NE S'APPLIQUERAIT PAS, DANS LA MESURE OU IL SERAIT TENU JURIDIQUEMENT NUL ET NON AVENU.



050504@11223



Contents

Preface 7

1 Before You Install the Software 11

Plan the Installation 11

Decisions That You Must Make 11

Gather the Necessary Information 12

Loading the Distribution Files On a Workstation 23

▼ How to Load the Distribution Files On a Workstation 23

2 Installing the Grid Engine Software Interactively 27

Interactive Installation Overview 28

Performing an Installation 28

▼ How to Install the Master Host 28

▼ How to Install Execution Hosts 42

Registering Administration Hosts 46

Registering Submit Hosts 47

▼ How to Install the Berkeley DB Spooling Server 47

3 Automating the Installation Process 51

Using the `inst_sge` Utility and a Configuration Template 51

▼ How to Use the `inst_sge` Utility to Automate the Installation Process 51

4 Installing the Increased Security Features 57

Why Install the Increased Security Features? 57

Additional Setup Required 58

▼ How to Install a CSP-Secured System	58
▼ How to Generate Certificates and Private Keys for Users	62
▼ How to Renew Certificates	63
Checking Certificates	63
5 Upgrading from a Previous Release of Grid Engine Software	67
About Upgrading the Software	67
▼ How to Upgrade the Software	67
6 Verifying the Installation	81
Verifying the Installation	81
▼ How to Verify That the Daemons Are Running on the Master Host	81
▼ How to Verify That the Daemons Are Running on the Execution Hosts	82
▼ How to Run Simple Commands	83
▼ How to Submit Test Jobs	84
7 Removing the Grid Engine Software	87
Removing the Software Interactively	87
▼ How to Remove the Software Interactively	87
Removing the Software Using the <code>inst_sge</code> Utility and a Configuration Template	88
▼ How to Remove the Software Interactively	88
8 Installing the Accounting and Reporting Console	91
Setting Up the Database Software	91
Set up the PostgreSQL Database Software	91
▼ How to Start the Database Server	91
▼ How to Set Up a PostgreSQL Database	94
▼ How to Set Up an Oracle Database	94
Install the Accounting and Reporting Software	95
▼ How to Set Up <code>dbWriter</code>	95
▼ How to Install Sun Web Console	101
▼ How to Install the Accounting and Reporting Console	102
▼ How to Add Authorized ARCo Users	105

A	Microsoft Services For UNIX	107
	Overview	107
	Unsupported N1GE Functionality	108
	System Requirements	108
	Services for UNIX Installation	108
	Post SFU Installation Tasks	116
	Troubleshooting SFU	117
B	Other N1GE Installation Issues	119
	Checking Linux Motif Libraries	119
	▼ Installing Linux Motif Libraries	119
	Installing N1GE on a System with IPMP	120
	What is IP Multipathing?	120
	Issues between IPMP and Grid Engine	120
	Installing the Grid Engine Master Node With IPMP	121
	Installing a Grid Engine on an Execution Host With IPMP	122
	Enabling Administrative and Submit Hosts with IPMP	122
	Glossary	123
	Index	127

Preface

The *N1 Grid Engine 6 Installation Guide* describes the procedures for installing and upgrading the N1™ Grid Engine 6 software.

This version of the manual supports Grid Engine 6 Update 4.

Who Should Use This Book

This manual is for engineers and system administrators, who need to install the N1 Grid Engine 6 software. Installation of the N1 Grid Engine 6 software should be done by someone who is familiar with the administration of the platform on which the software is installed.

Before You Read This Book

While this book contains a complete glossary, if you are new to N1 Grid Engine 6 software, you should familiarize yourself with the concepts that are discussed in Chapter 1, “Introduction to the N1 Grid Engine 6 Software,” in *N1 Grid Engine 6 User’s Guide*.

How This Book Is Organized

[Chapter 1](#) describes each of decisions you must make in the planning process, and how to extract the installation files from CD-ROM.

[Chapter 2](#) describes the procedure for installing the software manually.

[Chapter 3](#) describes the files and commands necessary to automate your installations.

[Chapter 4](#) describes the procedure for installing CSP-based encryption.

[Chapter 5](#) describes the upgrade procedure.

[Chapter 6](#) describes how you can ensure that the software is installed correctly.

[Chapter 7](#) describes the procedure to remove the software from your systems.

[Chapter 8](#) describes the procedure for installing the optional accounting and reporting module.

[Chapter 9](#), explains the functions of the DBWriter in detail.

[Appendix A](#), explains how to prepare a Windows system for installation of N1GE6 by installing Microsoft's Services for UNIX.

[Appendix B](#), describes some installation corner cases.

[Glossary](#) is a list of product-specific words and phrases and their definitions.

Related Books

Other books in the N1 Grid Engine 6 software documentation collection include:

- *N1 Grid Engine 6 User's Guide*
- *N1 Grid Engine 6 Administration Guide*
- *N1 Grid Engine 6 Release Notes*

Accessing Sun Documentation Online

The docs.sun.comSM Web site enables you to access Sun technical documentation online. You can browse the docs.sun.com archive or search for a specific book title or subject. The URL is <http://docs.sun.com>.

Ordering Sun Documentation

Sun Microsystems offers select product documentation in print. For a list of documents and how to order them, see “Buy printed documentation” at <http://docs.sun.com>.

Typographic Conventions

The following table describes the typographic changes that are used in this book.

TABLE P-1 Typographic Conventions

Typeface or Symbol	Meaning	Example
AaBbCc123	The names of commands, files, and directories, and onscreen computer output	Edit your <code>.login</code> file. Use <code>ls -a</code> to list all files. <code>machine_name%</code> you have mail.
AaBbCc123	What you type, contrasted with onscreen computer output	<code>machine_name%</code> su Password:
<i>AaBbCc123</i>	Command-line placeholder: replace with a real name or value	To delete a file, type rm <i>filename</i> .
<i>AaBbCc123</i>	Book titles, new terms, or terms to be emphasized	Read Chapter 6 in <i>User's Guide</i> . These are called <i>class</i> options. You must be <i>root</i> to do this.

Shell Prompts in Command Examples

The following table shows the default system prompt and superuser prompt for the C shell, Bourne shell, and Korn shell.

TABLE P-2 Shell Prompts

Shell	Prompt
C shell prompt	machine_name%
C shell superuser prompt	machine_name#
Bourne shell and Korn shell prompt	\$
Bourne shell and Korn shell superuser prompt	#

Before You Install the Software

This chapter describes the steps that need to be taken before you install the N1™ Grid Engine 6 software (*grid engine software*).

This chapter includes the following topics:

- [“Plan the Installation” on page 11](#)
- [“Loading the Distribution Files On a Workstation” on page 23](#)

Plan the Installation

Whether you have installed previous versions of the grid engine software or this is your first time, you will need to do some planning before you extract and install the software. This section describes the decisions you must make, and, wherever possible, gives you criteria on which you can base your decisions.

Decisions That You Must Make

You must make several decisions before you can plan the installation:

- Decide whether your system of networked computer hosts that run N1 Grid Engine 6 software (*grid engine system*) is to be a single cluster or a collection of sub-clusters, called *cells*. Cells allow you to install separate instances of the grid engine software but share the binary files across those instances.
- Select the machines that are to be grid engine system hosts. Determine the host type of each machine: *master host*, *shadow master host*, *administration host*, *submit host*, *execution host*, or a combination.
- Ensure that all users of the grid engine system have the same user names on all submit and execution hosts.

Note – Hosts running Windows as operating system cannot have the host type master host or shadow master host.

- Decide how to order grid engine software directories. For example, you could organize directories as a complete tree on each workstation, or you could cross-mount directories, or you could set up a partial directory tree on some workstations. You must also decide where to locate each grid engine software installation directory, *sge-root*.
- Decide on the site's queue structure.
- Determine whether to define network services as an NIS file or as local to each workstation in */etc/services*.
- Use the information in this chapter to gather the information necessary to complete the installation worksheet.

Gather the Necessary Information

Before you install the grid engine software, you must plan how to achieve the results that fit your environment. This section helps you make the decisions that affect the rest of the procedure. Write down your installation plan in a table similar to the following example.

Parameter	Value
<i>sge-root</i> directory	
Cell name	
Administrative user	
<i>sge_qmaster</i> port number	
<i>sge_execd</i> port number	
Master host	
Shadow master hosts	
Execution hosts	
Administration hosts	
Submit hosts	
Group ID range for jobs	

Parameter	Value
Spooling mechanism (Berkeley DB or Classic spooling)	
Berkeley DB server host (the master or another host)	
Berkeley DB spooling directory on the database server	
Scheduler tuning profile (Normal, High, Max)	
Installation method (interactive, secure, automated, or upgrade)	
If you are going to install N1GE 6 on a Windows system, acquire and install Microsoft Services For UNIX. See Appendix A for more information.	
If you are going to install N1GE 6 on a Windows system, create the required CSP certificates before installing N1GE. See the section called “How to Install a CSP-secured System” in Chapter 4 for information about CSP certificates.	
Check the Other Installations Appendix for applicability.	

Disk Space Requirements

The grid engine software directory tree has the following fixed disk space requirements:

- 40 Mbytes for the installation files (including documentation) without any binaries
- Between 10 and 15 Mbytes for each set of binaries

The ideal disk space for grid engine system spool directories is as follows:

- 10-200 Mbytes for the master host spool directories
- 10-200 Mbytes for the Berkeley DB spool directories

Note – The spool directories of the master host and of the execution hosts are configurable and need not reside under the default location, *sge-root*.

Note – You must satisfy several Windows-specific prerequisites before you can install N1GE on hosts running Windows as operating system. It might be necessary to install additional software on your computer which might require additional disk space. (See Appendix A).

sge-root Installation Directory

Create a directory into which you will load the contents of the distribution media. This directory is called the *root directory*, or *sge-root*. When the grid engine system is running, this directory stores the current cluster configuration and all other data that must be spooled to disk.

Note – It is not a requirement that spool areas reside under *sge-root*. Actually this location may be avoided for efficiency reasons.

Use a valid path name for the directory that is network accessible on all hosts. For example, if the file system is mounted using automounter, set *sge-root* to `/usr/N1GE6`, not to `/tmp_mnt/usr/N1GE6`. Throughout this document, the *sge-root* variable is used to refer to the installation directory.

sge-root is the top level of the grid engine software directory tree. Each grid engine system component in a cell needs read access to the *sge-root/cell/common* directory, on startup. When grid engine software is installed as a single cluster, the value of *cell* is `default`.

For ease of installation and administration, this directory should be readable on all hosts on which you intend to run the grid engine software installation procedure. For example, you can select a directory available across a network file system, such as NFS. If you choose to select file systems that are local to the hosts, you must copy the installation directory to each host before you start the installation procedure for the particular machine. See “[File Access Permissions](#)” on page 16 for a description of required permissions.

Directory Organization

When determining the directory organization, you must decide the following:

- The directory organization (for example, whether you will install a complete software tree on each workstation, directories cross-mounted, or a partial directory tree on some workstations, and so on)
- Where to locate each root directory, *sge-root*

Note – Because changing the installation directory or the spool directories requires a new installation of the system, use extra care to select a suitable installation directory up front. Note that all important information from a previous installation can be preserved.

By default, the installation procedure installs the grid engine software, manuals, spool areas, and the configuration files in a directory hierarchy under the installation directory (see [Figure 1–1](#)). If you accept this default behavior, you should install or select a directory with the access permissions that are described in “[File Access Permissions](#)” on page 16.

You can select the spool areas to put in other locations during the primary installation. See “[Configuring Queues](#)” in *N1 Grid Engine 6 Administration Guide* for instructions.

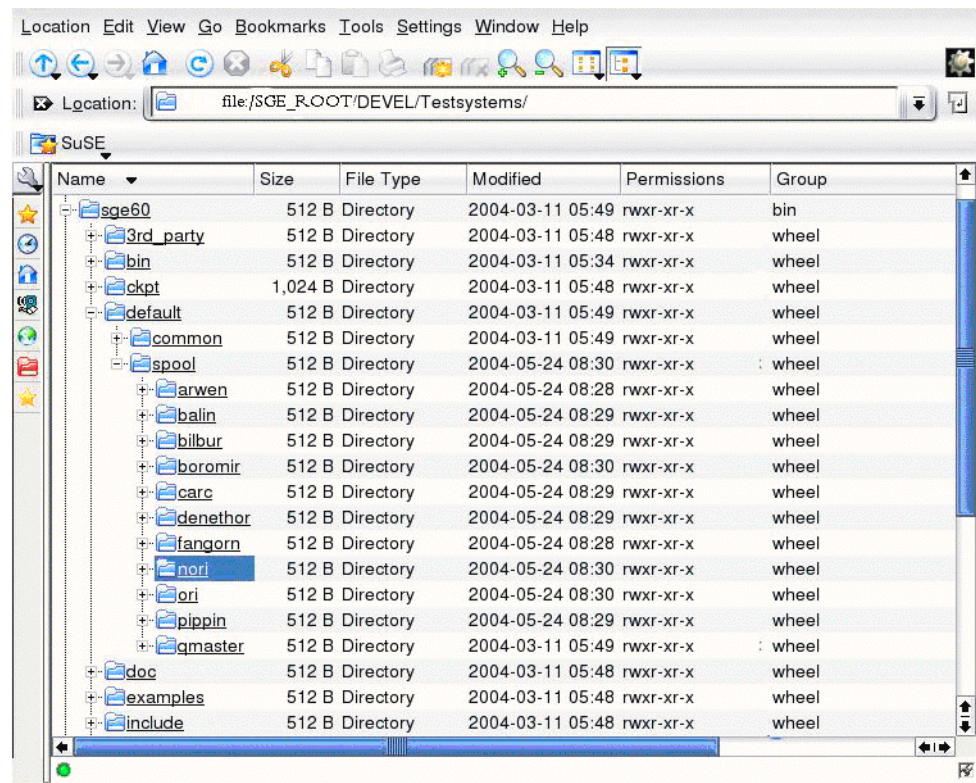


FIGURE 1–1 Sample Directory Hierarchy

Cells

You can set up the grid engine system as a single cluster or as a collection of loosely coupled clusters called *cells*. The `SGE_CELL` environment variable indicates the cluster being referenced. When the grid engine system is installed as a single cluster, `$SGE_CELL` is not set, and the value `default` is assumed for the cell value.

User Names

In order for the grid engine system to verify that users submitting jobs have permission to submit them on the desired execution hosts, users' names must be identical on the submit and execution hosts involved. You may therefore have to change user names on some machines, because grid engine system users map directly to system user accounts.

Note – User names on the master host are not relevant for permission checking. These user names do not have to match or even exist.

Installation Accounts

You can install the grid engine software either as the root user or as an unprivileged user (for example, your own user account). However, if you install the software logged in as an unprivileged user, the installation allows only that user to run grid engine system jobs. Access is denied to all other accounts. Installing the software logged in as the root account resolves this restriction. However, root permission is required for the complete installation procedure. Also, if you install as an unprivileged user, you are not allowed to use the `qrsh`, `qtcsh`, `qmake` commands, nor can you run tightly integrated parallel jobs.

Note – If you decide to install grid engine as an unprivileged user, you must set the `sge_commd` port number higher than or equal to 1024.

File Access Permissions

If you install the software logged in as root, you might have a problem configuring root read/write access for all hosts on a shared file system. Therefore, you might have problems putting *sge-root* onto a network-wide file system.

You can force grid engine software to run all grid engine system components through a non-root administrative user account (called `sgeadmin`, for example). With this setup, you need only read/write access to the shared *sge-root* file system for this particular user.

The installation procedure asks whether files should be created and owned by an administrative user account. If you answer “Yes” and provide a valid user name, files are created by this user. Otherwise, the user name under which you run the installation procedure is used. It is recommended that you create an administrative user, and answer “ Yes” to this question.

Make sure in all cases that the account used for file handling on all hosts has read/write access to the *sge-root* directory. Also, the installation procedure assumes that the host from which you access the grid engine software distribution media can write to the *sge-root* directory.

Note – The name of the `root` user on Windows hosts depends on the system language of the Windows operating system. It is even possible to change the name of the `root` user. The default name for many languages is the name `Administrator`.

Network Services

Determine whether your site’s network services are defined in an NIS database or in an `/etc/services` file that is local to each workstation. If your site uses NIS, find out the host name of your NIS server is so that you can add entries to the NIS “services” map.

The grid engine system services are `sge_execd` and `sge_qmaster`. To add the services to your NIS map, choose reserved, unused port numbers. The following examples show `sge_qmaster` and `sge_execd` entries.

```
sge_qmaster 536/tcp
```

```
sge_execd 537/tcp
```

Master Host

The master host controls the grid engine system. This host runs the master daemon `sge_qmaster`, and the scheduling daemon, `sge_schedd`.

The master host must comply with the following requirements:

- The host must be a stable platform.
- The host must *not* be excessively busy with other processing.
- At least 60 – 120 Mbytes of unused main memory must be available to run the grid engine system daemons. For very large clusters that include many hundreds or thousands of hosts and tens of thousands of jobs in the system at any time, 1 GByte or more of unused main memory might be required and two CPUs might be beneficial.
- The master host must be installed before shadow master execution, administration, or submit hosts.

- (Optional) The grid engine software directory, *sge-root*, should be installed locally, to cut down on network traffic.

Note – Windows hosts cannot act as master hosts.

Shadow Master Hosts

These hosts back up the functionality of *sge_qmaster* in case the master host or the master daemon fails. To be a shadow master host, a machine must have the following characteristics:

- It must run *sge_shadowd*.
- It must share *sge_qmaster* status, job information, and queue configuration information that is logged to disk. In particular, the shadow master hosts need read/write root or administration user access to the *sge_qmaster* spool directory and to the *sge-root/cell/common* directory.
- The *sge-root/cell/common/shadow_masters* file must contain a line defining the host as a shadow master host.

Note – If no cell name is specified during installation, the value of *cell* is *default*.

The shadow master host facility is activated for a host as soon as these conditions are met. You do not need to restart the grid engine system daemons to make a host into a shadow master host.

Note – Windows hosts cannot act as master hosts.

Spool Directories Under the Root Directory

During the installation of the master host, you must specify the location of a spooling directory. This directory is used to spool jobs from execution hosts that do not have a local spooling directory.

- On the master host, spool directories are maintained under *qmaster-spool-dir*. The location of *qmaster-spool-dir* is defined during the master host installation process. The default value of *qmaster-spool-dir* is *sge-root/cell/spool/qmaster*.
- On each execution host, a spool directory called *execd-spool-dir* is defined during the execution host installation processes. The default value of *execd-spool-dir* is *sge-root/cell/spool/exec-host*. You will get better performance from execution hosts with local spooling directories than from execution hosts that have NFS

mounted the master host's spooling directory.

Note – If no cell name is specified during installation, the value of *cell* is default.

You do not need to export these directories to other machines. However, exporting the entire *sge-root* tree and making it write-accessible for the master host and all executable hosts makes administration easier.

Choosing Between Classic Spooling and Database Spooling

During the installation, you are given the option to choose between classic spooling and Berkeley DB spooling server. If you choose Berkeley DB spooling, you are then given the option to spool to a local directory or to a separate host, known as a Berkeley DB spooling server.

While classic spooling is an option, you should see better performance using a Berkeley DB spooling server. Part of this performance increase is because the master host can make non-blocking writes to the database, but has to make blocking writes to the text file used by classic spooling. Other factors that may influence your decision are file format and data integrity. There is a greater level of data integrity when you write to the Berkeley DB, rather than to a text file. However, a text file stores data in a format that humans can read and edit. Normally, you do not need to read these files, but the spooling directory contains the messages from the system daemons, which can be useful during debugging.

Database Server and Spooling Host

The master host can store its configuration and state to a Berkeley DB spooling database. The spooling database can be installed on the master server or on a separate host. When the Berkeley DB spools into a local directory on the master host, the performance is better, but if you want to set up a shadow master host, you need to use a separate Berkeley DB spooling server (host). In this case, you have to choose a host with a configured RPC service. The master host connects through RPC to the Berkeley DB.

Note – Using a shadow master host is more reliable, but using a separate Berkeley DB spooling host results in a potential security hole. RPC communication as used by the Berkeley DB can be easily compromised. Only use this alternative if your site is secure and if users can be trusted to access the Berkeley DB spooling host by means of TCP/IP communication.

If you choose to use Berkeley DB spooling without a shadow master, you don't need to set up a separate spooling server. Likewise, if you choose *not* to use Berkeley DB spooling, you can set up a shadow master host without setting up a separate spooling server.

Once you determine whether you need a separate spooling server, you will also need to determine the location for the spooling directory. The spooling directory must be local to the spooling server. A default value for the location of the spooling directory is recommended during installation but this default value is not suitable when the file server is different from the master host.

The requirements for the Berkeley DB spooling host are similar to the requirements for the master host:

- The host must be a stable platform.
- The host must *not* be excessively busy with other processing.
- At least 60 – 120 Mbytes of unused main memory must be available to run the grid engine system daemons. For very large clusters that include many hundreds or thousands of hosts and tens of thousands of jobs in the system at any time, 1 GByte or more of unused main memory may be required and two CPUs may be beneficial.
- (Optional) A separate spooling host must be installed before the master host.
- (Optional) The directory, *sgc-root*, should be installed locally, to cut down on network traffic.

Execution Hosts

Execution hosts run the jobs that users submit to the grid engine system. An execution host must first be set up as an administration host. You run an installation script on each execution host.

Group IDs

You need to provide a range of IDs that will be assigned dynamically for jobs. The range must be big enough to provide enough numbers for the maximum number of grid engine system jobs running at a single moment on a single host.

A group ID is assigned to each grid engine system job to monitor the resource utilization of the job. Each job will be assigned a unique ID during the time it is running. For example, a range of 20000-20100 allows 100 jobs to run concurrently on a single host. You can change the group ID range for your cluster configuration at any time, but the values in the UNIX group ID range must be unused on your system.

Administration Hosts

Operators and managers of the grid engine system use administration hosts to perform administrative tasks such as reconfiguring queues or adding grid engine system users.

The master host installation script automatically makes the master host an administration host. During the master host installation process, you can add other administration hosts. You can also manually add administration hosts on the master host at any time after installation.

Submit Hosts

Jobs can be submitted and controlled from submit hosts. The master host installation script automatically makes the master host a submit host.

Cluster Queues

The installation procedure creates a default cluster queue structure, which is suitable for getting acquainted with the system. The default queue can be removed after installation.

Note – No matter what directory is used for the installation of the software, the administrator can change most settings that were created by the installation procedure. This change can be made while the system is running.

There are several factors you need to consider when determining a queue structure.

- Whether you need cluster queues for sequential, interactive, parallel, and other job types
- Which queue instances to put on which execution hosts
- How many job slots are needed in each queue

For more detailed information on administering cluster queues, see “Configuring Queues” in *N1 Grid Engine 6 Administration Guide*.

Scheduler Profiles

You can choose from three scheduler profiles during the installation process: normal, high, and max. You can use these predefined profiles as a starting point for grid engine tuning.

Using these profiles, you can optimize the scheduler for one or more of the following:

- The amount of information about a scheduling run
- The load adjustment during a scheduling run
- Interval scheduling (the default) or immediate scheduling

You can choose from three scheduler profiles:

- **normal**— This profile uses load adaptation, and interval scheduling, and reports all the information that the scheduler gathers during the dispatch cycle. This profile is the starting point for most grids. Use this profile if your highest priority is gathering and reporting information about a scheduling run.
- **high**— This profile is more appropriate for a large cluster, where throughput is more important than gathering and reporting all the information from the scheduler. This profile also uses interval scheduling. Use this profile if you want to get better performance at the cost of getting less information about your scheduling runs.
- **max**— This profile disables all information gathering and reporting, enables immediate scheduling, and disables load adaptation. Immediate scheduling is very useful for sites with high throughput and very short running jobs. The advantage of immediate scheduling decreases as run time of the jobs increases. This profile can be used in clusters of any size where only throughput is important and everything else is a lower priority.

For more information on how to configure scheduling, see “Administering the Scheduler” in *N1 Grid Engine 6 Administration Guide*.

Installation Method

Several methods are available for installing the grid engine software:

- Interactive
- Interactive, with increased security
- Automated, using the `inst_sge` script and a configuration file
- Upgrade

To decide which installation method you should use, consider the following factors.

- Do you already have the grid engine software installed and running?
If so, you’ll probably want to upgrade. The upgrade process is described in [Chapter 5](#).
If not, the master host installation is only done once, so the master host is typically installed interactively, as described in [Chapter 2](#).
- Do you need to install just a few execution hosts?
If so, then you will probably want to install them interactively, as described in [Chapter 2](#).
- Do you need to install a large number of execution hosts?

If so, then you might want to perform automated installation, using the `inst_sge` script and a configuration file. This process is described in [“Using the `inst_sge` Utility and a Configuration Template” on page 51](#).

- Do you require your grid to use encryption?

If so, you have to perform an interactive installation with increased security. This process is described in [Chapter 4](#).

Check the Other Installation Issues Appendix

If you are installing N1GE on a Linux system or on a system with IPMP, see the *Other Installation Issues* appendix for some important information.

Loading the Distribution Files On a Workstation

Grid Engine is distributed on CD-ROM, and through electronic download. For information on how to access CD-ROMs, ask your system administrator or refer to your local system documentation. The CD-ROM distribution contains a directory named `N1_Grid_Engine_6u4`. The product distribution is in this directory, in both `tar.gz` format and the `pkgadd` format. The `pkgadd` format is provided for the Solaris™ Operating System (*Solaris OS*). For all supported operating systems, the software is distributed in `tar.gz` format.

▼ How to Load the Distribution Files On a Workstation

Before You Begin Ensure that the file systems and directories that are to contain the grid engine software distribution and the spool and configuration files are set up properly by setting the access permissions as defined in [“File Access Permissions” on page 16](#).

- Steps**
1. **Provide access to the distribution media.**
 - If you downloaded the software, rather than getting it on CD-ROM, just unzip the five files into a directory. This directory must be located on a file system that has at least 350 MBytes free space.
 2. **Log in to a system, preferably a system that has a direct connection to a file server.**

3. Create the installation directory as described in “[sge-root Installation Directory](#)” on page 14.

```
# mkdir /opt/nlge6
```

In these instructions, the installation directory is abbreviated as *sge-root*.

4. Install the binaries for all binary architectures that are to be used by any of your master, execution, and submit hosts in your grid engine system cluster.

■ The pkgadd Method

The pkgadd format is provided for the Solaris Operating System. To facilitate remote installation, the pkgadd directories are also provided in zip files.

You can install the following packages:

- SUNWsgeec – Architecture independent files
- SUNWsgeed – Documentation
- SUNWsgee – Solaris (SPARC® platform) 32-bit binaries for Solaris 7, Solaris 8, and Solaris 9 Operating Systems
- SUNWsgeex – Solaris (SPARC platform) 64-bit binaries for Solaris 7, Solaris 8, and Solaris 9 Operating Systems
- SUNWsgeei — Solaris (x86 platform) binaries for Solaris 8 and Solaris 9 Operating Systems
- SUNWsgeeax - Solaris (x64 platform) binaries for Solaris 10 Operating System
- SUNWsgeea - Accounting and Reporting Console (ARCo) packages for the Solaris and Linux Operating systems.

As you type the following commands, you must be prepared to respond to script questions about your base directory, *sge-root* and the administrative user. The script requests the choices you made during the planning steps of this installation. See “[Decisions That You Must Make](#)” on page 11.

At the command prompt, type the following commands, responding to the script questions.

```
# cd cdrom_mount_point/N1_Grid_Engine_6u4
# pkgadd -d ./Common/Packages/SUNWsgeec
# pkgadd -d ./Docs/Packages/SUNWsgeed
# pkgadd -d ./Solaris_sparc/Packages/SUNWsgee          (This is optional; at least one
                                                         binary set is required)
# pkgadd -d ./Solaris_sparc/Packages/SUNWsgeex        (This is optional; at least one
                                                         binary set is required)
# pkgadd -d ./Solaris_x86/Packages/SUNWsgeei          (This is optional; at least one
                                                         binary set is required)
# pkgadd -d ./Solaris_x64/Packages/SUNWsgeeax        (This is optional; at least one
                                                         binary set is required)
```

■ The tar Method

For all supported operating systems, the software is distributed in *tar.gz* format.

The following table contains files that you will need to install, regardless of what platform you are on.

<i>File</i>	<i>Description</i>
Common/tar/nlge-6_0u4-common.tar.gz	Architecture independent files
Docs/tar/nlge-6_0u4-doc.tar.gz	Release notes, installation guide, user guide and administration guide

The tar files that contain platform-specific binaries use the naming convention of `nlge-6_0u4-bin-architecture.tar.gz`. The following table lists the platform-specific binaries. You need to install the file for each platform that you need to support. Note that each platform has its own directory under `N1_Grid_Engine_6u4`.

<i>Platform-Specific File</i>	<i>Platform</i>
Solaris_sparc/tar/nlge-6_0u4-bin-solaris.tar.gz	Solaris (SPARC platform) 32-bit binaries for Solaris 7, Solaris 8, and Solaris 9 Operating Systems
Solaris_sparc/tar/nlge-6_0u4-bin-solaris-sparcv9.tar.gz	Solaris (SPARC platform) 64-bit binaries for Solaris 7, Solaris 8, and Solaris 9 Operating Systems
Solaris_x86/tar/nlge-6_0u4-bin-solaris-i586.tar.gz	Solaris (x86 platform) binaries for Solaris 8, and Solaris 9 Operating Systems
Solaris_x64/tar/nlge-6_0u4-bin-solaris-x64.tar.gz	Solaris (x64 platform) 64-bit binaries for Solaris 10
Gemm/tar/nlge-6_0u4-gemm.tar.gz	Grid Engine Management Module, to be installed with SCS 2.2.1.
Windows/tar/nlge-6_0u4-bin-win32-x86.tar.gz	Microsoft Windows (x86 platform 32-bit binaries for Windows 2000, XP and Windows Server 2003
Linux24_i586/tar/nlge-6_0u4-bin-linux24-i586.tar.gz	Linux (x86 platform) binaries for the 2.4 kernel

Linux24_amd64/tar/nlge-6_0u4-bin-linux24-amd64.tar.gz	Linux (AMD platform) binaries for the 2.4 kernel
MacOSX/tar/nlge-6_0u4-bin-darwin.tar.gz	Apple Mac OS/X
HPUX11/tar/nlge-6_0u4-bin-hp11.tar.gz	Hewlett Packard HP-UX 11
Aix51/tar/nlge-6_0u4-bin-irix65.tar.gz	SGI Irix 6.5
Aix43/tar/nlge-6_0u4-bin-aix51.tar.gz	IBM AIX 5.1
Irix65/tar/nlge-6_0u4-bin-aix43.tar.gz	IBM AIX 4.3

Type the following commands at the command prompt. In the example, *basedir* is the abbreviation for the full directory, *cdrom_mount_point/N1_Grid_Engine_6u4*.

```
% su
# cd sge-root
# gzip -dc basedir/Common/tar/nlge-6_0u4-common.tar.gz | tar xvpf -
# gzip -dc basedir/Docs/tar/nlge-6_0u4-doc.tar.gz | tar xvpf -
# gzip -dc basedir/Solaris_sparc/tar/nlge-6_0u4-bin-solsparc32.tar.gz | tar xvpf -
# gzip -dc basedir/Solaris_sparc/tar/nlge-6_0u4-bin-solsparc64.tar.gz | tar xvpf -
# SGE_ROOT=sge-root; export SGE_ROOT
# util/setfileperm.sh $SGE_ROOT
```

Installing the Grid Engine Software Interactively

This chapter discusses the steps that you must take to manually install the grid engine software. Please note that this chapter does not cover the upgrade process or the installation of the Accounting and Reporting Module, ARCo. Those processes are covered in subsequent chapters.

Note – The instructions in this chapter assume that you are installing the software on a computer running the Solaris™ Operating System. Any difference in functionality created by other operating system architecture that grid engine software runs on is documented in files starting with the string `arc_depend_` in the *sge-root/doc* directory. The remainder of the file name indicates the operating system architectures to which the comments in the files apply, as in the `arc_depend_iris.asc` file.

Also note that there are several prerequisites that you must satisfy for Windows systems before you can install N1GE6 (see Appendix A).

This chapter discusses the following topics:

- [“Interactive Installation Overview” on page 28](#)
- [“Performing an Installation” on page 28](#)

Interactive Installation Overview

Note – The instructions in this section are for a *fresh* grid engine system only. For instructions on how to install a new system with additional security protection, see [Chapter 4](#). For instructions on how to *upgrade* an existing installation of an earlier version of grid engine software, see [Chapter 5](#).

Full installation includes the following tasks:

- Running an installation script on the master host and on every execution host in the grid engine system
- Registering information about administration hosts and submit hosts

Performing an Installation

This section includes instructions for performing the following tasks:

- [“How to Install the Master Host” on page 28](#)
- [“How to Install Execution Hosts” on page 42](#)
- [“Registering Administration Hosts” on page 46](#)
- [“Registering Submit Hosts” on page 47](#)
- [“How to Install the Berkeley DB Spooling Server” on page 47](#)

The following sections describe how to install all the components of the grid engine system, including the master, execution, administration, and submit hosts. If you need to install the system with enhanced security, see [Chapter 4](#) before you continue installation.

▼ How to Install the Master Host

The master installation procedure creates the appropriate directory hierarchy required by `sge_qmaster` and `sge_schedd`. The procedure starts up the grid engine system daemons, `sge_qmaster` and `sge_schedd`, on the master host. The master host is also registered as a host with administrative and submit permission. The installation procedure creates a default configuration for the system on which it is run. The installation script queries the system for the type of operating system. The script then makes meaningful settings based on this information.

If, at any time during the installation, you think something went wrong, you can quit the installation procedure and restart it.

Before You Begin

If you have decided to use an administrative user, as described in “[User Names](#)” on page 16, you should create that user now. This procedure assumes that you have already extracted the grid engine software, as described in “[Loading the Distribution Files On a Workstation](#)” on page 23.

Note – Windows hosts cannot act as master hosts.

Steps

1. Log in to the master host as `root`.

2. Ensure that you have set the `$SGE_ROOT` environment variable by typing:

```
# echo $SGE_ROOT
```

- If the `$SGE_ROOT` environment variable is not set, set it now, by typing:

```
# SGE_ROOT=sge-root; export SGE_ROOT
```

3. Change to the installation directory.

- If the directory where the installation files reside is visible from the master host, change directories (`cd`) to the installation directory `sge-root`, and then proceed to [Step 4](#).
- If the directory is not visible and cannot be made visible, do the following:
 - a. Create a local installation directory, `sge-root`, on the master host.
 - b. Copy the installation files to the local installation directory `sge-root` across the network (for example, by using `ftp` or `rcp`).
 - c. Change directories (`cd`) to the local `sge-root` directory.

4. Type the `install_qmaster` command, adding the `-csp` flag if you are installing using the Certificate Security Protocol method described in [Chapter 4](#). This command starts the master host installation procedure. You are asked several questions, and you might be required to run some administrative actions.

```
% ./install_qmaster
Welcome to the Grid Engine installation
-----

Grid Engine qmaster host installation
-----

Before you continue with the installation please read these hints:
```

- Your terminal window should have a size of at least 80x24 characters
- The INTR character is often bound to the key Ctrl-C. The term >Ctrl-C< is used during the installation if you have the possibility to abort the installation

The qmaster installation procedure will take approximately 5-10 minutes.

Hit <RETURN> to continue >>

5. Choose an administrative account owner.

Choosing Grid Engine admin user account

You may install Grid Engine that all files are created with the user id of an unprivileged user.

This will make it possible to install and run Grid Engine in directories where user >root< has no permissions to create and write files and directories.

- Grid Engine still has to be started by user >root<
- this directory should be owned by the Grid Engine administrator

Do you want to install Grid Engine under an user id other than >root< (y/n) [y] >> **y**

Choosing a Grid Engine admin user name

Please enter a valid user name >> **sgeadmin**

Installing Grid Engine as admin user >sgeadmin<

Hit <RETURN> to continue >>

6. Verify the *sge-root* directory setting.

In the following example, the value of *sge-root* is /opt/nlge6.

Checking \$SGE_ROOT directory

The Grid Engine root directory is:

```
$SGE_ROOT = /opt/nlge6
```

If this directory is not correct (e.g. it may contain an automounter prefix) enter the correct path to this directory or hit <RETURN> to use default [/opt/nlge6] >>

Your \$SGE_ROOT directory: /opt/nlge6

Hit <RETURN> to continue >>

7. Set up the TCP/IP services for the grid engine software.

a. You will be notified if the TCP/IP services have not been configured.

```
Grid Engine TCP/IP service >sge_qmaster<
-----
```

There is no service >sge_qmaster< available in your >/etc/services< file or in your NIS/NIS+ database.

You may add this service now to your services database or choose a port number. It is recommended to add the service now. If you are using NIS/NIS+ you should add the service at your NIS/NIS+ server and not to the local >/etc/services< file.

Please add an entry in the form

```
sge_qmaster <port_number>/tcp
```

to your services database and make sure to use an unused port number.

Please add the service now or press <RETURN> to go to entering a port number >>

b. Start a new terminal session or window to add the information /etc/services file or your NIS maps.

c. Add the correct ports to the /etc/services file or your NIS services map, as described in “[Network Services](#)” on page 17.

The following example shows how you might edit your /etc/services file.

```
...
sge_qmaster      536/tcp
sge_execd        537/tcp
```

Note – In this example, the entries for both `sge_qmaster` and `sge_execd` are added to `/etc/services`. Subsequent steps in this example assume that both entries have been made.

Save your changes.

d. Return to the window where the installation script is running.

Please add the service now or press <RETURN> to go to entering a port number >>

Press <RETURN>. You will see the following output:

```
sge_qmaster 536
```

```
Service >sge_qmaster< is now available.
```

Hit <RETURN> to continue >>

```
Grid Engine TCP/IP service >sge_execd<
-----
```

```
Using the service

    sge_execd

for communication with Grid Engine.

Hit <RETURN> to continue >>
```

8. Enter the name of your cell.

The use of grid engine system cells is described in [“Cells” on page 16](#).

```
Grid Engine cells
-----
```

Grid Engine supports multiple cells.

If you are not planning to run multiple Grid Engine clusters or if you don't know yet what is a Grid Engine cell it is safe to keep the default cell name

default

If you want to install multiple cells you can enter a cell name now.

The environment variable

```
$SGE_CELL=<your_cell_name>
```

will be set for all further Grid Engine commands.

Enter cell name [default] >>

- If you have decided to use cells, then enter the cell name now.
- If you have decided not to use cells, then press <RETURN> to continue.

```
Using cell >default<.
```

```
Hit <RETURN> to continue >>
```

Press <RETURN> to continue.

9. Specify a spool directory.

For guidelines on disk space requirements for the spool directory, see [“Disk Space Requirements” on page 13](#). For information on where spool directory is installed, see [“Spool Directories Under the Root Directory” on page 18](#).

```
Grid Engine qmaster spool directory
-----
```

The qmaster spool directory is the place where the qmaster daemon stores the configuration and the state of the queuing system.

The admin user >sgeadmin< must have read/write access to the qmaster spool directory.

If you will install shadow master hosts or if you want to be able to start the qmaster daemon on other hosts (see the corresponding section in the Grid Engine Installation and Administration Manual for details) the account on the shadow master hosts also needs read/write access to this directory.

The following directory

```
[/opt/nlge6/default/spool/qmaster]
```

will be used as qmaster spool directory by default!

Do you want to select another qmaster spool directory (y/n) [n] >>

- If you want to accept the default spool directory, press <RETURN> to continue.

- If you do *not* want to accept the default spool directory, then answer *y*.

In the following example the /my/spool directory is specified as the master host spool directory.

Do you want to select another qmaster spool directory (y/n) [n] >> *y*

Please enter a qmaster spool directory now! >>/my/spool

10. The next question concerns Windows-based execution hosts. If you do not plan to use Windows support answer *no*. If you want windows support answer *yes*.

If you answer yes, you will be asked some Windows-specific questions further on in the installation process. These questions will be marked as WINDOWS-ONLY.

Windows Execution Host Support

Are you going to install Windows Execution Hosts? (y/n) [n]

11. Verify or set the correct file permissions. If you used pkgadd or you know that the file permissions are correct, you should answer *yes*. Answering *no* will direct the script to set the permissions for you as shown in the next step.

Verifying and setting file permissions

Did you install this version with >pkgadd< or did you already verify and set the file permissions of your distribution (y/n) [y] >> *y*

12. WINDOWS ONLY — Set the correct file permissions. If you specified that you wanted Windows Execution Host support in the previous question, you should let the script set the file permissions for you. You do this by answering *no* to the following question.

Verifying and setting file permissions

Did you install this version with >pkgadd< or did you already verify and set the file permissions of your distribution (y/n) [y] >>

In some cases, e.g. the binaries are stored on a NTFS or other filesystem which provides additional file permissions, the UNIX file permissions can be wrong. In this case we would advise to verify and to set the file permissions (enter: n) (y/n) [n] >>n

Verifying and setting file permissions

We may now verify and set the file permissions of your Grid Engine distribution.

This may be useful since due to unpacking and copying of your distribution your files may be unaccessible to other users.

We will set the permissions of directories and binaries to

755 - that means executable are accessible for the world

and for ordinary files to

644 - that means readable for the world

Do you want to verify and set your file permissions (y/n) [y] >> y

Verifying and setting file permissions and owner in >3rd_party<
Verifying and setting file permissions and owner in >bin<
Verifying and setting file permissions and owner in >ckpt<
Verifying and setting file permissions and owner in >examples<
Verifying and setting file permissions and owner in >install_execd<
Verifying and setting file permissions and owner in >install_qmaster<
Verifying and setting file permissions and owner in >mpi<
Verifying and setting file permissions and owner in >pvm<
Verifying and setting file permissions and owner in >qmon<
Verifying and setting file permissions and owner in >util<
Verifying and setting file permissions and owner in >utilbin<
Verifying and setting file permissions and owner in >catman<
Verifying and setting file permissions and owner in >doc<
Verifying and setting file permissions and owner in >man<
Verifying and setting file permissions and owner in >inst_sge<
Verifying and setting file permissions and owner in >bin<
Verifying and setting file permissions and owner in >lib<
Verifying and setting file permissions and owner in >utilbin<

Your file permissions were set

Hit <RETURN> to continue >>

13. Specify whether all of your grid engine system hosts are located in a single DNS domain.

Select default Grid Engine hostname resolving method

Are all hosts of your cluster in one DNS domain? If this is the case the hostnames

>hostA< and >hostA.foo.com<

would be treated as equal, because the DNS domain name >foo.com< is ignored when comparing hostnames.

Are all hosts of your cluster in a single DNS domain (y/n) [y] >>

- **If all of your grid engine system hosts are located in a single DNS domain, then answer y.**

Are all hosts of your cluster in a single DNS domain (y/n) [y] >> **y**

Ignoring domainname when comparing hostnames.

Hit <RETURN> to continue >>

- **If all of your grid engine system hosts are *not* located in a single DNS domain, then answer n.**

Are all hosts of your cluster in a single DNS domain (y/n) [y] >> **n**

The domainname is not ignored when comparing hostnames.

Hit <RETURN> to continue >>

Default domain for hostnames

Sometimes the primary hostname of machines returns the short hostname without a domain suffix like >foo.com<.

This can cause problems with getting load values of your execution hosts. If you are using DNS or you are using domains in your >/etc/hosts< file or your NIS configuration it is usually safe to define a default domain because it is only used if your execution hosts return the short hostname as their primary name.

If your execution hosts reside in more than one domain, the default domain parameter must be set on all execution hosts individually.

Do you want to configure a default domain (y/n) [y] >>

Press <RETURN> to continue.

- a. If you want to specify a default domain, then answer y.**

In the following example, sun.com is specified as the default domain.

Do you want to configure a default domain (y/n) [y] >> **y**

Please enter your default domain >> **sun.com**

Using >sun.com< as default domain. Hit <RETURN> to continue >>

- b. If you do *not* want to specify a default domain, then answer n.**

In the following example, sun.com is specified as the default domain.

Do you want to configure a default domain (y/n) [y] >> **n**

14. Press <RETURN> to continue.

```
Making directories
-----

creating directory: default/common
creating directory: /opt/nlge6/default/spool/qmaster
creating directory: /opt/nlge6/default/spool/qmaster/job_scripts
Hit <RETURN> to continue >>
```

15. Specify whether you want to use classic spooling or Berkeley DB.

For more information on how to determine the type of spooling mechanism you want, please see [“Choosing Between Classic Spooling and Database Spooling” on page 19](#).

```
Setup spooling
-----

Your SGE binaries are compiled to link the spooling libraries
during runtime (dynamically). So you can choose between Berkeley DB
spooling and Classic spooling method.
Please choose a spooling method (berkeleydb|classic) [berkeleydb] >>
```

■ **If you want to specify Berkeley DB spooling, press <RETURN> to continue.**

```
Please choose a spooling method (berkeleydb|classic) [berkeleydb] >>
```

The Berkeley DB spooling method provides two configurations!

1) Local spooling:

The Berkeley DB spools into a local directory on this host (qmaster host)
This setup is faster, but you can't setup a shadow master host

2) Berkeley DB Spooling Server:

If you want to setup a shadow master host, you need to use
Berkeley DB Spooling Server!

In this case you have to choose a host with a configured RPC service.
The qmaster host connects via RPC to the Berkeley DB. This setup is more
failsafe, but results in a clear potential security hole. RPC communication
(as used by Berkeley DB) can be easily compromised. Please only use this
alternative if your site is secure or if you are not concerned about
security. Check the installation guide for further advice on how to achieve
failsafety without compromising security.

```
Do you want to use a Berkeley DB Spooling Server? (y/n) [n] >>
```

■ **If you want to use a Berkeley DB spooling server, enter y.**

```
Do you want to use a Berkeley DB Spooling Server? (y/n) [n] >> y
```

Berkeley DB Setup

Please, log in to your Berkeley DB spooling host and execute "inst_sge -db"
Please do not continue, before the Berkeley DB installation with
"inst_sge -db" is completed, continue with <RETURN>

Note – *Do not* press <RETURN> until you have completed the Berkeley DB installation on the spooling server.

- a. Start a new terminal session or window.
- b. Log in to the spooling server.
- c. Install the software, as described in [“How to Install the Berkeley DB Spooling Server” on page 47.](#)
- d. After you have installed the software on the spooling server, return to the master installation window, and press <RETURN> to continue.

e. Enter the name of the spooling server.

In the following example, `vector` is the host name of the spooling server.

```
Berkeley Database spooling parameters
-----
```

```
Please enter the name of your Berkeley DB Spooling Server! >> vector
```

f. Enter the name of the spooling directory.

In the following example, `/opt/nlge6/default/spooldb` is the spooling directory.

```
Please enter the Database Directory now!
```

```
Default: [/opt/nlge6/default/spooldb] >>
Dumping bootstrapping information
Initializing spooling database
```

```
Hit <RETURN> to continue >>
```

■ **If you do *not* want to use a Berkeley DB spooling server, enter `n`.**

```
Do you want to use a Berkeley DB Spooling Server? (y/n) [n] >> n
```

```
Hit <RETURN> to continue >>
```

```
Berkeley Database spooling parameters
-----
```

```
Please enter the Database Directory now, even if you want to spool locally
it is necessary to enter this Database Directory.
```

```
Default: [/opt/nlge6/default/spool/spooldb] >>
```

Specify an alternate directory, or press <RETURN> to continue.

```
creating directory: /opt/nlge6/default/spool/spooldb
Dumping bootstrapping information
```

Initializing spooling database

Hit <RETURN> to continue >>

■ **If you want to specify classic spooling, then enter classic.**

Please choose a spooling method (berkeleydb|classic) [berkeleydb] >> **classic**

Dumping bootstrapping information

Initializing spooling database

Hit <RETURN> to continue >>

16. Enter a group ID range

For more information, see [“Group IDs” on page 20](#).

Grid Engine group id range

When jobs are started under the control of Grid Engine an additional group id is set on platforms which do not support jobs. This is done to provide maximum control for Grid Engine jobs.

This additional UNIX group id range must be unused group id's in your system. Each job will be assigned a unique id during the time it is running. Therefore you need to provide a range of id's which will be assigned dynamically for jobs.

The range must be big enough to provide enough numbers for the maximum number of Grid Engine jobs running at a single moment on a single host. E.g. a range like >20000-20100< means, that Grid Engine will use the group ids from 20000-20100 and provides a range for 100 Grid Engine jobs at the same time on a single host.

You can change at any time the group id range in your cluster configuration.

Please enter a range >> **20000-20100**

Using >20000-20100< as gid range. Hit <RETURN> to continue >>

17. Verify the spooling directory for the execution daemon.

For information on spooling, see [“Spool Directories Under the Root Directory” on page 18](#).

Grid Engine cluster configuration

Please give the basic configuration parameters of your Grid Engine installation:

<execd_spool_dir>

The pathname of the spool directory of the execution hosts. User >sgeadmin< must have the right to create this directory and to write into it.

```
Default: [/opt/nlge6/default/spool] >>
```

18. Enter the email address of the user who should receive problem reports.

In this example, the user who will receive problem report is me@my.domain.

```
Grid Engine cluster configuration (continued)
```

```
<administrator_mail>
```

The email address of the administrator to whom problem reports are sent.

It's is recommended to configure this parameter. You may use >none< if you do not wish to receive administrator mail.

Please enter an email address in the form >user@foo.com<.

```
Default: [none] >> me@my.domain
```

19. WINDOWS-ONLY — At this point, if you specified that you wanted Windows support, you are asked to create CSP certificates. You should read the section called "How to Install a CSP-secured System" in Chapter 4 for information about CSP certificates before you go on.

20. Verify the configuration parameters.

The following parameters for the cluster configuration were configured:

execd_spool_dir	/opt/nlge6/default/spool
administrator_mail	me@my.domain

```
Do you want to change the configuration parameters (y/n) [n] >> n
```

```
Creating local configuration
```

```
Creating >act_qmaster< file
```

```
Adding default complex attributes
```

```
Reading in complex attributes.
```

```
Adding default parallel environments (PE)
```

```
Reading in parallel environments:
```

```
    PE "make".
```

```
Adding SGE default usersets
```

```
Reading in usersets:
```

```
    Userset "deadlineusers".
```

```
    Userset "defaultdepartment".
```

```
Adding >sge_aliases< path aliases file
```

```
Adding >qtask< qtcsh sample default request file
```

```
Adding >sge_request< default submit options file
```

```
Creating >sgemaster< script
```

```
Creating >sgeexecd< script
```

```
Creating settings files for >.profile/.cshrc<
```

```
Hit <RETURN> to continue >>
```

21. Specify whether you want the daemons to start when the system is booted.

```
qmaster/scheduler startup script
-----

We can install the startup script that will
start qmaster/scheduler at machine boot (y/n) [y] >> y

Installing startup script /etc/rc2.d/S95sgemaster

Hit <RETURN> to continue >>
...
```

22. WINDOWS-ONLY — Add the Windows Administrator name to the SGE manager list.

```
Windows Administrator Name
-----

For a later execution host installation it is recommended to add the
Windows Administrator name to the SGE manager list

Please, enter the Windows Administrator name [Default: Administrator] >>
```

23. Identify the hosts that you will later install as execution hosts.

```
Adding Grid Engine hosts
-----

Please now add the list of hosts, where you will later install your execution
daemons. These hosts will be also added as valid submit hosts.

Please enter a blank separated list of your execution hosts. You may
press <RETURN> if the line is getting too long. Once you are finished
simply press <RETURN> without entering a name.

You also may prepare a file with the hostnames of the machines where you plan
to install Grid Engine. This may be convenient if you are installing Grid
Engine on many hosts.

Do you want to use a file which contains the list of hosts (y/n) [n] >> n

Adding admin and submit hosts
-----

Please enter a blank seperated list of hosts.

Stop by entering <RETURN>. You may repeat this step until you are
entering an empty list. You will see messages from Grid Engine
when the hosts are added.

Host(s): host1 host2 host3 host4

host1 added to administrative host list
```



```

host1 added to submit host list
host2 added to administrative host list
host2 added to submit host list
host3 added to administrative host list
host3 added to submit host list
host4 added to administrative host list
host4 added to submit host list
Hit <RETURN> to continue >>

Creating the default <all.q> queue and <allhosts> hostgroup
-----

root@vector added "@allhosts" to host group list
root@vector added "all.q" to cluster queue list

Hit <RETURN> to continue >>

```

24. Select a scheduler profile.

For information on how to determine which profile you should use, see [“Scheduler Profiles” on page 21](#).

```

Scheduler Tuning
-----

```

The details on the different options are described in the manual.

```

Configurations
-----

```

- 1) Normal
 - Fixed interval scheduling, report scheduling information, actual + assumed load
- 2) High
 - Fixed interval scheduling, report limited scheduling information, actual load
- 3) Max
 - Scheduling on demand, report no scheduling information, actual load

```

Enter the number of your preferred configuration and hit <RETURN>!
Default configuration is [1] >>

```

Once you answer this question, the installation process is complete. Several screens of information will be displayed before the script exits. The commands that are noted in those screens are also documented in this chapter.

25. Create the environment variables for use with the grid engine software.

Note – If no cell name was specified during installation, the value of *cell* is default.

- If you are using a C shell, type the following command:

```
% source sge-root/cell/common/settings.csh
```

- If you are using a Bourne shell or Korn shell, type the following command:

```
$ . sge-root/cell/common/settings.sh
```

See Also For details on how you can verify that the execution host has been set up correctly, see [“How to Verify That the Daemons Are Running on the Master Host” on page 81.](#)

▼ How to Install Execution Hosts

The execution host installation procedure creates the appropriate directory hierarchy required by `sge_execd`, and starts the `sge_execd` daemon on the execution host. This section describes how to install execution hosts interactively from the command line. You can automate the installation of execution of multiple hosts by using the procedure described in [Chapter 3](#).

Before You Begin Before installing an execution host, you first need to have installed the master server as described in [“How to Install the Master Host” on page 28.](#)

You must satisfy several prerequisites before you can install N1GE execution hosts with Windows operating systems. It might be necessary to install additional software on your computer. (See Appendix A)

- Steps**
1. Log in to the execution host as `root`.
 2. As you did for the master installation, either copy the installation files to a local installation directory `sge-root` or use a network installation directory.
 3. Ensure that you have set the `$SGE_ROOT` environment variable by typing:


```
# echo $SGE_ROOT
```

 - If the `$SGE_ROOT` environment variable is not set, set it now, by typing:


```
# SGE_ROOT=sge-root; export SGE_ROOT
```
 4. Change directory (`cd`) to the installation directory, `sge-root`.
 5. Verify that the execution host has been declared on the administration host.


```
# qconf -sh
```

 - If you do not see the name of this execution host in the output of the `qconf` command, you will need to declare it as an administration host.
 - a. Start a new terminal session or window.

b. In that window, log into the master host.

c. Declare the execution host as an administration host, using the `qconf` command.

```
# qconf -ah quark
quark added to administrative host list
```

d. Log back out of the master host, and continue with the installation of the execution host.

6. Run the `install_execd` command.

If you are installing using the Certificate Security Protocol method described in [Chapter 4](#), add the `-csp` option to the `install_execd` command.

```
% ./install_execd
```

This command starts the execution host installation procedure.

```
Welcome to the Grid Engine execution host installation
-----
```

If you haven't installed the Grid Engine qmaster host yet, you must execute this step (with `>install_qmaster<`) prior the execution host installation.

For a successful installation you need a running Grid Engine qmaster. It is also necessary that this host is an administrative host.

You can verify your current list of administrative hosts with the command:

```
# qconf -sh
```

You can add an administrative host with the command:

```
# qconf -ah <hostname>
```

The execution host installation will take approximately 5 minutes.

Hit `<RETURN>` to continue >>

7. Verify the `sge-root` directory setting.

In the following example, the value of `sge-root` is `/opt/nlge6`.

```
Checking $SGE_ROOT directory
-----
```

The Grid Engine root directory is:

```
$SGE_ROOT = /opt/nlge6
```

If this directory is not correct (e.g. it may contain an automounter prefix) enter the correct path to this directory or hit `<RETURN>` to use default `[/opt/nlge6]` >>

Your \$SGE_ROOT directory: /opt/nlge6

Hit <RETURN> to continue >>

8. Enter the name of your cell(s).

The use of grid engine system cells is described in [“Cells” on page 16](#).

Grid Engine cells

Grid Engine supports multiple cells.

If you are not planning to run multiple Grid Engine clusters or if you don't know yet what is a Grid Engine cell it is safe to keep the default cell name

default

If you want to install multiple cells you can enter a cell name now.

The environment variable

\$SGE_CELL=<your_cell_name>

will be set for all further Grid Engine commands.

Enter cell name [default] >>

- If you have decided to use cells, then enter the cell names now.
- If you have decided not to use cells, then press <RETURN> to continue.

Using cell >default<.

Hit <RETURN> to continue >>

Press <RETURN> to continue.

9. Press <RETURN> to continue.

The script verifies that the execution host has been declared as an administration host.

Checking hostname resolving

This hostname is known at qmaster as an administrative host.

Hit <RETURN> to continue >>

10. Specify whether you want to use a local spool directory.

For information on spooling, see [“Spool Directories Under the Root Directory” on page 18](#).

Local execd spool directory configuration

During the qmaster installation you've already entered a global

execd spool directory. This is used, if no local spool directory is configured.

Now you can enter a local spool directory for this host.

Do you want to configure a local spool directory
for this host (y/n) [n] >>

■ **If you do *not* want a local spool directory, answer n.**

Do you want to configure a local spool directory
for this host (y/n) [n] >> **n**

Creating local configuration

sgeadmin@host1 modified "host1" in configuration list

Local configuration for host >host1< created.

Hit <RETURN> to continue >>

■ **If you do want a local spool directory, answer y.**

In the following example, /var/tmp/spool is used as the local spool directory on host1. Choose any directory that meets the disk space requirements described in [“Disk Space Requirements” on page 13](#).

Do you want to configure a local spool directory
for this host (y/n) [n] >> **y**

Please enter the local spool directory now! >> **/var/tmp/spool**

Using local execd spool directory [/var/tmp/spool]

Hit <RETURN> to continue >>

Creating local configuration

sgeadmin@host1 modified "host1" in configuration list

Local configuration for host >host1n< created.

Hit <RETURN> to continue >>

11. Specify whether you want execd to start automatically at boot time.

You may not wish to install the startup script if you are installing a test cluster or you decide you’d rather start the daemon manually on reboot.

execd startup script

We can install the startup script that will
start execd at machine boot (y/n) [y] >> **y**

Installing startup script /etc/rc2.d/S95sgeexecd

Hit <RETURN> to continue >>

Grid Engine execution daemon startup

```
Starting execution daemon. Please wait ...
starting sge_execd
```

```
Hit <RETURN> to continue >>
```

12. Specify a queue for this host.

```
Adding a queue for this host
-----
```

We can now add a queue instance for this host:

- it is added to the >allhosts< hostgroup
- the queue provides 1 slot(s) for jobs in all queues referencing the >allhosts< hostgroup

You do not need to add this host now, but before running jobs on this host it must be added to at least one queue.

Do you want to add a default queue instance for this host (y/n) [y] >>

Once you answer this question, the installation process is complete. Several screens of information will be displayed before the script exits. The commands that are noted in those screens are also documented in this chapter.

13. Create the environment variables for use with the grid engine software.

Note – If no cell name was specified during installation, the value of *cell* is default.

- If you are using a C shell, type the following command:

```
% source sge-root/cell/common/settings.csh
```

- If you are using a Bourne shell or Korn shell, type the following command:

```
$ . sge-root/cell/common/settings.sh
```

See Also For details on how you can verify that the execution host has been set up correctly, see [“How to Verify That the Daemons Are Running on the Execution Hosts”](#) on page 82.

Registering Administration Hosts

The master host is implicitly allowed to run administrative tasks and to submit, monitor, and delete jobs. The master host does not require any kind of additional installation as administration. By contrast, *pure* administration hosts do require registration.

Note – You can also install execution hosts by using the QMON graphical user interface. For information on how to complete this task using QMON, see “Configuring Administration Hosts With QMON” in *N1 Grid Engine 6 Administration Guide*.

From the master host, using the grid engine system administrative account (for example, the `sgeadmin` account), type the following command.

```
% qconf -ah admin_host_name[,...]
```

Registering Submit Hosts

Note – You can also install execution hosts by using the QMON graphical user interface. For information on how to complete this task using QMON, see “Configuring Submit Hosts With QMON” in *N1 Grid Engine 6 Administration Guide*.

From the master host, using the grid engine system administrative account (for example, the `sgeadmin` account), type the following command.

```
% qconf -as submit_host_name[,...]
```

Refer to “About Hosts and Daemons” in *N1 Grid Engine 6 Administration Guide* for more details and other means to configure the different host types.

▼ How to Install the Berkeley DB Spooling Server

The installation procedure installs the grid engine software necessary for Berkeley DB spooling.

Before You Begin The grid engine software must be loaded onto a local file system. For details on how to extract the files, see [“How to Load the Distribution Files On a Workstation” on page 23](#).

- Steps**
1. Log in to the spooling server host as `root`.
 2. Ensure that you have set the `$SGE_ROOT` environment variable by typing:

```
# echo $SGE_ROOT
```

 - If the `$SGE_ROOT` environment variable is not set, set it now, by typing:

```
# SGE_ROOT=sge-root; export SGE_ROOT
```

3. Change to the installation directory.

```
# cd $SGE_ROOT
```

4. Type the `inst_sge` command with the `-db` option.

```
# sge-root/inst_sge -db
```

This command starts the spooling server installation procedure. You are asked several questions. If you think something went wrong, you can quit the installation procedure and restart it at any time.

5. Choose an administrative account owner.

```
Choosing Grid Engine admin user account
```

```
-----
```

You may install Grid Engine that all files are created with the user id of an unprivileged user.

This will make it possible to install and run Grid Engine in directories where user `>root<` has no permissions to create and write files and directories.

- Grid Engine still has to be started by user `>root<`
- this directory should be owned by the Grid Engine administrator

Do you want to install Grid Engine
under an user id other than `>root<` (y/n) [y] >> **y**

```
Choosing a Grid Engine admin user name
```

```
-----
```

Please enter a valid user name >> **sgeadmin**
Installing Grid Engine as admin user `>sgeadmin<`

Hit `<RETURN>` to continue >>

6. Verify the `sge-root` directory setting.

In the following example, the value of `sge-root` is `/opt/nlge6`.

```
Checking $SGE_ROOT directory
```

```
-----
```

The Grid Engine root directory is:

```
$SGE_ROOT = /opt/nlge6
```

If this directory is not correct (e.g. it may contain an automounter prefix) enter the correct path to this directory or hit `<RETURN>` to use default `[/opt/nlge6]` >>

Your `$SGE_ROOT` directory: `/opt/nlge6`

Hit `<RETURN>` to continue >>

7. Enter the name of your cell.

The use of grid engine system cells is described in [“Cells” on page 16](#).

Grid Engine cells

Grid Engine supports multiple cells.

If you are not planning to run multiple Grid Engine clusters or if you don't know yet what is a Grid Engine cell it is safe to keep the default cell name

default

If you want to install multiple cells you can enter a cell name now.

The environment variable

`$SGE_CELL=<your_cell_name>`

will be set for all further Grid Engine commands.

Enter cell name [default] >>

8. Select Berkeley DB spooling.

Setup spooling

Your SGE binaries are compiled to link the spooling libraries during runtime (dynamically). So you can choose between Berkeley DB spooling and Classic spooling method.

Please choose a spooling method (berkeleydb|classic) [berkeleydb] >>

9. Verify your host name.

In this example, the installation script is being run on host2.

Berkeley Database spooling parameters

You are going to install a RPC Client/Server mechanism!
In this case, qmaster will
contact a RPC server running on a separate server machine.
If you want to use the SGE shadowd, you have to use the
RPC Client/Server mechanism.

Enter database server name or
hit <RETURN> to use default [host2] >>

10. Enter the directory path of your spooling directory.

You may need to change this path if this directory is NFS mounted, or if you don't have write permissions to this directory.

Enter the database directory
or hit <RETURN> to use default [/opt/nlge6/default//spooldb] >>

creating directory: /opt/nlge6/default//spooldb

11. Start the RPC server.

Now we have to startup the rc script
>/opt/nlge6/default/common/sgebdb<
on the RPC server machine

If you already have a configured Berkeley DB Spooling Server,
you have to restart the Database with the rc script now and continue with >NO<

Shall the installation script try to start the RPC server? (y/n) [y] >> **y**
Starting rpc server on host host2!
The Berkeley DB has been started with these parameters:

Spooling Server Name: host2
DB Spooling Directory: /opt/nlge6/default//spooldb

Please remember these values, during Qmaster installation
you will be asked for! Hit <RETURN> to continue!

12. Specify whether you want Berkeley DB service to start automatically at boot time.

Berkeley DB startup script

We can install the startup script that
Grid Engine is started at machine boot (y/n) [y] >> **y**

Once you answer this question, the installation process is complete.

13. Create the environment variables for use with the grid engine software.

Note – If no cell name was specified during installation, the value of *cell* is default.

- If you are using a C shell, type the following command:

```
% source sge-root/cell/common/settings.csh
```

- If you are using a Bourne shell or Korn shell, type the following command:

```
$ . sge-root/cell/common/settings.sh
```

Automating the Installation Process

This chapter describes how the software installation process for grid engine software can be automated. Currently, you may only perform this procedure as the administrative user. If you attempt to use this procedure running as the `root` user, the procedure will fail.

Using the `inst_sge` Utility and a Configuration Template

The `inst_sge` utility is a general-purpose script that can be used on any host to install locally as a master, administration, execution, submit or shadow master host. You can use this utility in interactive mode to supplant any of the commands that were described in [Chapter 2](#). In addition, the `inst_sge` utility can be used in combination with a configuration file to automate system installation.

Note – When the `inst_sge` utility is used in combination with a configuration file to automate system installation, the user will receive no feedback from the system. However, a log file is created in the `sge-root/cell/spool` directory. If the installation script fails to complete, the log file can be found under the `/tmp` directory.

▼ How to Use the `inst_sge` Utility to Automate the Installation Process

Before You Begin

You need to complete the planning process as outlined in [“Plan the Installation”](#) on page 11.

In addition, you will need to be able to connect to each of the remote hosts using the `rsh` or `ssh` commands, without supplying a password. If this type of access is not allowed on your network, you will not be able to use this method of installation.

Note – A Windows execution host cannot be installed with the auto installation procedure.

Steps 1. **Change the ownership of the *sge-root* directory to the grid engine system administrative user.**

Currently, the owner of the *sge-root* directory must be the grid engine system administrative user. You must change the ownership of the *sge-root* directory to belong to your existing administrative user.

In the following example, your administrative user is *sgeadmin*, and *sge-root* is */opt/nlge6*.

```
# chown -R sgeadmin /opt/nlge6
```

2. **Create a copy of the configuration template, *sge-root/util/install_modules/inst_template.conf*.**

```
# cd sge-root/util/install_modules
# cp inst_template.conf my_configuration.conf
```

3. **Edit your configuration template, using the values from the worksheet you completed in “[Plan the Installation](#)” on page 11.**

4. **Start the installation.**

In this example, the local machine is installed as a master host and an execution host. In addition, the `-auto` option sets up any remote hosts, as specified in the configuration file.

```
# cd sge-root
# ./inst_sge -m -x -auto ./util/install_modules/my_configuration.conf
```

A log file of the master installation is created in the *sge-root/default/spool/qmaster* directory. The file name is created using the format *install_hostname_date_time.log*.

Example 3–1 Example Configuration File

```
#-----
# SGE default configuration file
#-----

# Use always fully qualified pathnames, please

# SGE_ROOT Path, this is basic information
# (mandatory for qmaster and execd installation)
SGE_ROOT="/opt/nlge6"
```

```

# SGE_QMASTER_PORT is used by qmaster for communication
# Please enter the port in this way: 1300
# Please do not this: 1300/tcp
#(mandatory for qmaster installation)
SGE_QMASTER_PORT="536"

# SGE_EXECD_PORT is used by execd for communication
# Please enter the port in this way: 1300
# Please do not this: 1300/tcp
#(mandatory for qmaster installation)
SGE_EXECD_PORT="537"

# CELL_NAME, will be a dir in SGE_ROOT, contains the common dir
# Please enter only the name of the cell. No path, please
#(mandatory for qmaster and execd installation)
CELL_NAME="default"

# ADMIN_USER, if you want to use a different admin user than the owner,
# of SGE_ROOT, you have to enter the user name, here
# Leaving this blank, the owner of the SGE_ROOT dir will be used as
admin user
ADMIN_USER=""

# The dir, where qmaster spools this parts, which are not spooled by DB
#(mandatory for qmaster installation)
QMASTER_SPOOL_DIR="/opt/nlge6/default/spool/qmaster"

# The dir, where the execd spools (active jobs)
# This entry is needed, even if your are going to use
# berkeley db spooling. Only cluster configuration and jobs will
# be spooled in the database. The execution daemon still needs a spool
# directory
#(mandatory for qmaster installation)
EXECD_SPOOL_DIR="/opt/nlge6/default/spool"

# For monitoring and accounting of jobs, every job will get
# unique GID. So you have to enter a free GID Range, which
# is assigned to each job running on a machine.
# If you want to run 100 Jobs at the same time on one host you
# have to enter a GID-Range like that: 16000-16100
#(mandatory for qmaster installation)
GID_RANGE="20000-20100"

# If SGE is compiled with -spool-dynamic, you have to enter here, which
# spooling method should be used. (classic or berkeleydb)
#(mandatory for qmaster installation)
SPOOLING_METHOD="berkeleydb"

# Name of the Server, where the Spooling DB is running on
# if spooling methode is berkeleydb, it must be "none", when
# using no spooling server and it must containe the servername
# if a server should be used. In case of "classic" spooling,
# can be left out
DB_SPOOLING_SERVER="none"

```

```

# The dir, where the DB spools
# If berkeley db spooling is used, it must contain the path to
# the spooling db. Please enter the full path. (eg. /tmp/data/spooldb)
# Remember, this directory must be local on the qmaster host or on the
# Berkeley DB Server host. No NSF mount, please
DB_SPOOLING_DIR="/opt/nlge6/default/spooldb"

# A List of Host which should become admin hosts
# If you do not enter any host here, you have to add all of your hosts
# by hand, after the installation. The autoinstallation works without
# any entry
ADMIN_HOST_LIST="host1"

# A List of Host which should become submit hosts
# If you do not enter any host here, you have to add all of your hosts
# by hand, after the installation. The autoinstallation works without
# any entry
SUBMIT_HOST_LIST="host1"

# A List of Host which should become exec hosts
# If you do not enter any host here, you have to add all of your hosts
# by hand, after the installation. The autoinstallation works without
# any entry
# (mandatory for execution host installation)
EXEC_HOST_LIST="host1"

# The dir, where the execd spools (local configuration)
# If you want configure your execution daemons to spool in
# a local directory, you have to enter this directory here.
# If you do not want to configure a local execution host spool directory
# please leave this empty
EXECD_SPOOL_DIR_LOCAL=""

# If true, the domainnames will be ignored, during the hostname resolving
# if false, the fully qualified domain name will be used for name resolving
HOSTNAME_RESOLVING="true"

# Shell, which should be used for remote installation (rsh/ssh)
# This is only supported, if your hosts and rshd/sshd is configured,
# not to ask for a password, or prompting any message.
SHELL_NAME="rsh"

# Enter your default domain, if you are using /etc/hosts or NIS configuration
DEFAULT_DOMAIN="none"

# If a job stops, fails, finnish, you can send a mail to this adress
ADMIN_MAIL="my.name@sun.com"

# If true, the rc scripts (sgemaster, sgeexecd, sgebdb) will be added,
# to start automatically during boottime
ADD_TO_RC="true"

#If this is "true" the file permissions of executables will be set to 755
#and of ordinary file to 644.

```

```

SET_FILE_PERMS="true"

# This option is not implemented, yet.
# When a exechost should be uninstalled, the running jobs will be rescheduled
RESCHEDULE_JOBS="wait"

# Enter a one of the three distributed scheduler tuning configuration sets
# (1=normal, 2=high, 3=max)
SCHEDD_CONF="1"

# The name of the shadow host. This host must have read/write permission
# to the qmaster spool directory
# If you want to setup a shadow host, you must enter the servername
# (mandatory for shadowhost installation)
SHADOW_HOST="hostname"

# Remove this execution hosts in automatic mode
# (mandatory for unistallation of executions hosts)
EXEC_HOST_LIST_RM="host2 host3 host4"

# This is a Windows specific part of the auto isntallation template
# If you going to install windows executions hosts, you have to enable the
# windows support. To do this, please set the WINDOWS_SUPPORT variable
# to "true". ("false" is disabled)
# (mandatory for qmaster installation, by default WINDOWS_SUPPORT is
# disabled)
WINDOWS_SUPPORT="false"

# Enabling the WINDOWS_SUPPORT, recommends the following parameter.
# The WIN_ADMIN_NAME will be added to the list of SGE managers.
# Without adding the WIN_ADMIN_NAME the execution host installation
# won't install correctly.
# WIN_ADMIN_NAME is set to "Administrator" which is default on most
# Windows systems. In some cases the WIN_ADMIN_NAME can be prefixed with
# the windows domain name (eg. DOMAIN+Administrator)
# (mandatory for qmaster installation)
WIN_ADMIN_NAME="Administrator"

```

Troubleshooting If you do not want your execution hosts to spool locally, be sure to set
 EXECD_SPOOL_DIR_LOCAL="", with no space between the double quotes ("").

Installing the Increased Security Features

Use the instructions in this section to set up your system more securely. These instructions will help you set up your system with *Certificate Security Protocol* (CSP)-based encryption.

Why Install the Increased Security Features?

Instead of transferring messages in clear text, the messages in this secure system are encrypted with a secret key. The secret key is exchanged using a public/private key protocol. Users present their certificates through the grid engine system to prove identity. Users receive the certificate to ensure that they are communicating with the correct systems. After this initial announcement phase, communication continues transparently in encrypted form. The session is valid only for a certain period, after which the session must be re-announced.

Note – Increased Security Features are not available if you intend to use Windows hosts as execution hosts.

Additional Setup Required

The steps required to set up the Certificate Security Protocol enhanced version of the grid engine system are similar to the standard setup. You generally follow the instructions in [“Plan the Installation”](#) on page 11, [“How to Load the Distribution Files On a Workstation”](#) on page 23, [“How to Install the Master Host”](#) on page 28, [“How to Install Execution Hosts”](#) on page 42, and [“Registering Administration Hosts”](#) on page 46.

However, the following additional tasks are required:

- Generating the Certificate Authority (CA) system keys and certificates on the master host by calling the installation script with the `-csp` flag
- Distributing the system keys and certificates to the execution and submit hosts using a secure method such as `ssh`
- Generating user keys and certificates automatically, after master installation
- Adding new users

▼ How to Install a CSP-Secured System

Install the grid engine software as outlined in [“Performing an Installation”](#) on page 28, with the following exception: use the additional flag `-csp` when invoking the various installation scripts.

- Steps**
1. To install a CSP-secured system, change the master host installation procedure by typing the following command and responding to the prompts from the installation script.

```
# ./install_qmaster -csp
```

2. To generate the CSP certificates and keys, you must supply the following information:

- Two-letter country code, for example, US for the United States
- State
- Location, such as a city
- Organization
- Organizational unit
- CA email address

As the installation proceeds, the Certificate Authority is created. A CA specific to the grid engine system is created on the master host. The directories that contain information relevant to security are as follows:

- The publicly accessible CA and daemon certificate are stored in `sge-root/cell/common/sgeCA`.

- The corresponding private keys are stored in `/var/sgeCA/{sge_service | portSGE_QMASTER_PORT}/cell/private`.
- User keys and certificates are stored in `/var/sgeCA/{sge_service | portSGE_QMASTER_PORT}/cell/userkeys/$USER`.

3. The script prompts you for site information.

4. Confirm whether the information you supplied is correct.

5. After the security-related setup of the master host `sge_qmaster` is finished, the script prompts you to continue with the rest of the installation procedure, as in the following example:

```
SGE startup script
-----

Your system wide SGEEE startup script is installed as:

    "/scratch2/eddy/sge_sec/default/common/sgemaster"

Hit Return to continue >>
```

6. Determine whether the shared file system is secure enough to hold the CSP security information.

- If you think that the shared file system *is* secure enough, continue with the basic installation procedure as outlined in [“How to Install Execution Hosts” on page 42](#).

Note – Remember to add the `-csp` flag when you call the `./install_execd` script for the execution host installation.

If the `root` user does not have write permissions in the `sge-root` directory on *all* of the machines where grid engine software will be installed, you are asked whether to install the software as the user to whom the directory belongs. If you answer *yes*, you must install the security-related files into that user’s `$HOME/.sge` directory, as shown in the following example. In the following example, `sgeadmin` is the name of the user who owns the installation directory.

```
% su - sgeadmin
% source sge-root/default/common/settings.csh
% sge-root/util/sgeCA/sge_ca -copy
% logout
```

After completing all remaining installation steps, refer to the instructions in [“How to Generate Certificates and Private Keys for Users” on page 62](#).

- If you think that the shared file system is *not* secure enough to hold the CSP security information in a place that can be accessed by the execution daemons, you must transfer the directory containing the daemon’s private

key and the random file to the *execution* host.

- a. As root on the *master* host, type the following commands to prepare to copy the private keys to the machines you set up as execution hosts.

```
# umask 077
# cd /
# tar cvpf /var/sgeCA/port536.tar /var/sgeCA/port536/default
```

- b. As root on each *execution* host, use the following commands to securely copy the files.

```
# umask 077
# cd /
# scp masterhost:/var/sgeCA/port536.tar .
# umask 022
# tar xvpf /port536.tar
# rm /port536.tar
```

- c. Type the following command to verify the file permissions.

```
# ls -lR /var/sgeCA/port536/
```

The output should look like the following example:

```
/var/sgeCA/port536/:
total 2
drwxr-xr-x  4 eddy      other          512 Mar  6 10:52 default
/var/sgeCA/port536/default:
total 4
drwx-----  2 eddy      staff          512 Mar  6 10:53 private
drwxr-xr-x  4 eddy      staff          512 Mar  6 10:54 userkeys
/var/sgeCA/port536/default/private:
total 8
-rw-----  1 eddy      staff          887 Mar  6 10:53 cakey.pem
-rw-----  1 eddy      staff          887 Mar  6 10:53 key.pem
-rw-----  1 eddy      staff         1024 Mar  6 10:54 rand.seed
-rw-----  1 eddy      staff          761 Mar  6 10:53 req.pem
/var/sgeCA/port536/default/userkeys:
total 4
dr-x-----  2 eddy      staff          512 Mar  6 10:54 eddy
dr-x-----  2 root      staff          512 Mar  6 10:54 root
/var/sgeCA/port536/default/userkeys/eddy:
total 16
-r-----  1 eddy      staff          3811 Mar  6 10:54 cert.pem
-r-----  1 eddy      staff          887 Mar  6 10:54 key.pem
-r-----  1 eddy      staff         2048 Mar  6 10:54 rand.seed
-r-----  1 eddy      staff          769 Mar  6 10:54 req.pem
/var/sgeCA/port536/default/userkeys/root:
total 16
-r-----  1 root      staff          3805 Mar  6 10:54 cert.pem
-r-----  1 root      staff          887 Mar  6 10:54 key.pem
-r-----  1 root      staff         2048 Mar  6 10:53 rand.seed
-r-----  1 root      staff          769 Mar  6 10:54 req.pem
```

- d. Install the security-related files into the admin user's `$HOME/.sge` directory.

If the `root` user does not have write permissions in the `sge-root` directory on *all* of the machines where grid engine software will be installed, you are asked whether to install the software as the user to whom the directory belongs. If you answer `yes`, you must install the security-related files into that user's `$HOME/.sge` directory, as shown in the following example. In the following example, `sgeadmin` is the name of the user who owns the installation directory.

```
% su - sgeadmin
% source sge-root/default/common/settings.csh
% sge-root/util/sgeCA/sge_ca -copy
% logout
```

- e. Continue with the grid engine software installation on the execution host by typing the following commands.

Note – You can also use the master host for executing jobs. To do so, you must carry out the execution host installation for the master machine. However, if you use a very slow machine as master host, or if your cluster is significantly large, do not use the master host as an execution host.

```
# cd sge-root
# ./install_execd -csp
```

- f. Respond to the prompts from the installation script.

The execution host installation procedure creates the appropriate directory hierarchy required by `sge_execd`, and starts the `sge_execd` daemon on the execution host.

- g. Create the environment variables for use with the grid engine software.

Note – If no cell name was specified during installation, the value of `cell` is `default`.

- If you are using a C shell, type the following command:

```
% source sge_root/cell/common/settings.csh
```

- If you are using a Bourne shell or Korn shell, type the following command:

```
$ . sge_root/cell/common/settings.sh
```

7. Proceed to the next task, “[How to Generate Certificates and Private Keys for Users](#)” on page 62.

▼ How to Generate Certificates and Private Keys for Users

To use the CSP-secured system, the user must have access to a user-specific certificate and private key. The most convenient method of gaining access is to create a text file identifying the users.

Steps 1. On the master host, create and save a text file that identifies users.

Use the format of the file `myusers.txt` shown in the following example. The fields of the file are `UNIX_username:Gecos_field:email_address`.

```
eddy:Eddy Smith:eddy@my.org
sarah:Sarah Miller:sarah@my.org
leo:Leo Lion:leo@my.org
```

2. As root on the master host, type the following command:

```
# sge-root/util/sgeCA/sge_ca -usercert myusers.txt
```

3. Confirm by typing the following command:

```
# ls -l /var/sgeCA/port536/default/userkeys
```

This directory listing produces output similar to the following example.

```
dr-x----- 2 eddy staff      512 Mar  5 16:13 eddy
dr-x----- 2 sarah staff     512 Mar  5 16:13 sarah
dr-x----- 2 leo  staff      512 Mar  5 16:13 leo
```

4. Tell each user listed in the file (`myusers.txt` in the example) to install the security-related files in their `$HOME/.sge` directories by typing the following commands.

```
% source sge-root/default/common/settings.csh
% sge-root/util/sgeCA/sge_ca -copy
```

Users should see the following confirmation (user `eddy` in the example).

```
Certificate and private key for user
eddy have been installed
```

For every grid engine software installation, a subdirectory for the corresponding `SGE_QMASTER_PORT` number is installed. The following example, based on the `myusers.txt` file, results from issuing the command preceding the output.

```
% ls -lR $HOME/.sge

/home/eddy/.sge:
total 2
drwxr-xr-x  3 eddy staff      512 Mar  5 16:20 port536

/home/eddy/.sge/port536:
total 2
drwxr-xr-x  4 eddy staff      512 Mar  5 16:20 default
```

```

/home/eddy/.sge/port536/default:
total 4
drwxr-xr-x  2 eddy staff          512 Mar  5 16:20 certs
drwx-----  2 eddy staff          512 Mar  5 16:20 private

/home/eddy/.sge/port536/default/certs:
total 8
-r--r--r--  1 eddy staff          3859 Mar  5 16:20 cert.pem

/home/eddy/.sge/port536/default/private:
total 6
-r-----  1 eddy staff           887 Mar  5 16:20 key.pem
-r-----  1 eddy staff          2048 Mar  5 16:20 rand.seed

```

▼ How to Renew Certificates

- Steps**
1. **Change to `$SGE_ROOT` and become root on the master host (assuming that `$SGE_CELL` is the default):**

```

# tcsh
# source $SGE_ROOT/default/settings.csh

```

2. **Edit `$SGE_ROOT/util/sgeCA/renew_all_certs.csh`, and change the number of days that the certificates are valid:**

```

# extend the validity of the CA certificate by
set CADAYS = 365
# extend the validity of the daemon certificate by
set DAEMONDAY = 365
# extend the validity of the user certificate by
set USERDAY = 365

```

3. **Run the changed script (the default for all extension times is 365 days from the day the script is run).**

```

# util/sgeCA/renew_all_certs.csh

```

4. **Replace the old certificates against the new ones on all hosts that installed them locally (that is, under `/var/sgeCA/...`, see the execution daemon installation).**
5. **If users have copied certificates and keys to `$HOME/.sge`, they have to repeat `$SGE_ROOT/util/sgeCA/sge_ca -copy` to have access to the renewed certificates.**

Checking Certificates

The following sections provide examples of commands related to certificates, where *arch* is your system architecture, as in `sol-sparc64`. Depending on what you want to do, type one or more of the following commands.

Display a Certificate

Type the following as one string (the command is too long to fit on one line in this guide), with a space between the `-in` and the `~/ .sge` components.

```
% sge-root/utilbin/arch/openssl  
x509 -in ~/ .sge/port536/default/certs/cert.pem -text
```

Check Issuer

Type the following as one string (the command is too long to fit on one line in this guide), with a space between the `-in` and the `~/ .sge` components.

```
% sge-root/utilbin/arch/openssl  
x509 -issuer -in ~/ .sge/port536/default/certs/cert.pem -noout
```

Check Subject

Type the following as one string (the command is too long to fit on one line in this guide), with a space between the `-in` and the `~/ .sge` components.

```
% sge-root/utilbin/arch/openssl  
x509 -subject -in ~/ .sge/port536/default/certs/cert.pem  
-noout
```

Show Email of Certificate

Type the following as one string (the command is too long to fit on one line in this guide), with a space between the `-in` and the `~/ .sge` components.

```
% sge-root/utilbin/arch/openssl  
x509 -email -in ~/ .sge/default/port536/certs/cert.pem -noout
```

Show Validity

Type the following as one string (the command is too long to fit on one line in this guide), with a space between the `-in` and the `~/ .sge` components.

```
% sge-root/utilbin/arch/openssl  
x509 -dates -in ~/ .sge/default/port536/certs/cert.pem -noout
```

Show Fingerprint

Type the following as one string (the command is too long to fit on one line in this guide), with a space between the `-in` and the `~/ .sge` components.


```
% sge-root/utilbin/arch/openssl  
x509 -fingerprint -in ~/.sge/port536/default/certs/cert.pem -noout
```


Upgrading from a Previous Release of Grid Engine Software

This chapter describes the steps necessary to upgrade your existing software to this release. You can upgrade from either Sun™ ONE Grid Engine 5.3 or Sun ONE Grid Engine, Enterprise Edition, 5.3.

About Upgrading the Software

The upgrade procedure is non destructive. The upgrade procedure installs the N1 Grid Engine 6 software on the master host by using the cluster configuration information from the older version of the software. The older version of the software will not be removed or modified in any way.

▼ How to Upgrade the Software

Before You Begin

Please review [“Plan the Installation” on page 11](#) for the information that you will need during the upgrade process. If you have decided to use an administrative user, as described in [“User Names” on page 16](#), you should create that user now. This procedure assumes that you have already extracted the grid engine software, as described in [“Loading the Distribution Files On a Workstation” on page 23](#).

Note – While you can run N1 Grid Engine 6 software concurrently with your older version of grid engine software, it is better to run the upgrade procedure when there are no running jobs.

- Steps**
1. Log in to the master host as `root`.
 2. Load the distribution files.

For details, see “Loading the Distribution Files On a Workstation” on page 23.

3. Ensure that you have set the `$SGE_ROOT` environment variable by typing:

```
# echo $SGE_ROOT
```

- If the `$SGE_ROOT` environment variable is not set, set it now, by typing:

```
# SGE_ROOT=sge-root; export SGE_ROOT
```

4. Change to the installation directory, *sge-root*.

- If the directory where the installation files reside is visible from the master host, change directories (`cd`) to the installation directory *sge-root*, and then proceed to [Step 4](#).
- If the directory is not visible and cannot be made visible, do the following:
 - a. Create a local installation directory, *sge-root*, on the master host.
 - b. Copy the installation files to the local installation directory *sge-root* across the network (for example, by using `ftp` or `rcp`).
 - c. Change directories (`cd`) to the local *sge-root* directory.

5. Run the upgrade command on the master host, and respond to the prompts.

This command starts the master host installation procedure. You are asked several questions, and you might be required to run some administrative actions.

The syntax of the upgrade command is:

```
inst_sge -upd 5.3-sge-root-directory 5.3-cell-name
```

In the following example, the 5.3 *sge-root* directory is `/sge/gridware` and the cell name is default.

```
# ./inst_sge -upd /sge/gridware default
Welcome to the Grid Engine Upgrade
-----
```

Before you continue with the installation please read these hints:

- Your terminal window should have a size of at least 80x24 characters
- The INTR character is often bound to the key Ctrl-C. The term `>Ctrl-C<` is used during the upgrade if you have the possibility to abort the upgrade

The upgrade procedure will take approximately 5-10 minutes. After this upgrade you will get a running `qmaster` and `schedd` with the configuration of your old installation. If the upgrade was successfully completed it is necessary to install your execution hosts with the `install_execd` script.

```
Hit <RETURN> to continue >>
```

6. Choose an administrative account owner.

In the following example, the value of *sge-root* is */opt/nlge6*, and the administrative user is *sgeadmin*.

```
Grid Engine admin user account
-----
```

The current directory

```
    /opt/nlge6
```

is owned by user

```
    sgeadmin
```

If user *>root<* does not have write permissions in this directory on **all** of the machines where Grid Engine will be installed (NFS partitions not exported for user *>root<* with read/write permissions) it is recommended to install Grid Engine that all spool files will be created under the user id of user *>sgeadmin<*.

IMPORTANT NOTE: The daemons still have to be started by user *>root<*.

Do you want to install Grid Engine as admin user *>sgeadmin<* (y/n) [y] >>

7. Verify the *sge-root* directory setting.

In the following example, the value of *sge-root* is */opt/nlge6*.

```
Checking $SGE_ROOT directory
-----
```

The Grid Engine root directory is:

```
    $SGE_ROOT = /opt/nlge6
```

If this directory is not correct (e.g. it may contain an automounter prefix) enter the correct path to this directory or hit *<RETURN>* to use default *[/opt/nlge6]* >>

8. Set up the TCP/IP services for the grid engine software.

a. You will be notified if the TCP/IP services have not been configured.

```
Grid Engine TCP/IP service >sge_qmaster<
-----
```

There is no service *>sge_qmaster<* available in your *>/etc/services<* file or in your NIS/NIS+ database.

You may add this service now to your services database or choose a port number. It is recommended to add the service now. If you are using NIS/NIS+ you should add the service at your NIS/NIS+ server and not to the local *>/etc/services<* file.

Please add an entry in the form

```
sge_qmaster <port_number>/tcp
```

to your services database and make sure to use an unused port number.

Please add the service now or press <RETURN> to go to entering a port number >>

- b. **Start a new terminal session or window to add the information /etc/services file or your NIS maps.**
- c. **Add the correct ports to the /etc/services file or your NIS services map, as described in “Network Services” on page 17.**

The following example shows how you might edit your /etc/services file.

```
...
sge_qmaster      536/tcp
sge_execd        537/tcp
```

Note – In this example, the entries for both `sge_qmaster` and `sge_execd` are added to `/etc/services`. Subsequent steps in this example assume that both entries have been made.

Save your changes.

- d. **Return to the window where the installation script is running.**

Please add the service now or press <RETURN> to go to entering a port number >>

Press <RETURN>. You will see the following output:

```
sge_qmaster 536

Service >sge_qmaster< is now available.

Hit <RETURN> to continue >>

Grid Engine TCP/IP service >sge_execd<
-----

Using the service

    sge_execd

for communication with Grid Engine.

Hit <RETURN> to continue >>
```

- 9. **Enter the name of your cell.**

The use of grid engine system cells is described in “Cells” on page 16.

```
Grid Engine cells
-----
```

Grid Engine supports multiple cells.

If you are not planning to run multiple Grid Engine clusters or if you don't know yet what is a Grid Engine cell it is safe to keep the default cell name

default

If you want to install multiple cells you can enter a cell name now.

The environment variable

`$SGE_CELL=<your_cell_name>`

will be set for all further Grid Engine commands.

Enter cell name [default] >>

- If you have decided to use cells, then enter the cell name now.
- If you have decided not to use cells, then press <RETURN> to continue.

Using cell >default<.

Hit <RETURN> to continue >>

Press <RETURN> to continue.

10. Specify a spool directory.

For guidelines on disk space requirements for the spool directory, see [“Disk Space Requirements” on page 13](#). For information on where spool directory is installed, see [“Spool Directories Under the Root Directory” on page 18](#).

Grid Engine qmaster spool directory

The qmaster spool directory is the place where the qmaster daemon stores the configuration and the state of the queuing system.

The admin user >sgeadmin< must have read/write access to the qmaster spool directory.

If you will install shadow master hosts or if you want to be able to start the qmaster daemon on other hosts (see the corresponding section in the Grid Engine Installation and Administration Manual for details) the account on the shadow master hosts also needs read/write access to this directory.

The following directory

`[/opt/nlge6/default/spool/qmaster]`

will be used as qmaster spool directory by default!

Do you want to select another qmaster spool directory (y/n) [n] >>

- If you want to accept the default spool directory, press <RETURN> to continue.

- If you do *not* want to accept the default spool directory, then answer **y**.

In the following example the /my/spool directory is specified as the master host spool directory.

```
Do you want to select another qmaster spool directory (y/n) [n] >> y
```

```
Please enter a qmaster spool directory now! >>/my/spool
```

11. Set the correct file permissions.

```
Verifying and setting file permissions
```

```
-----
```

```
Did you install this version with >pkgadd< or did you already  
verify and set the file permissions of your distribution (y/n) [y] >> n
```

```
Verifying and setting file permissions
```

```
-----
```

```
We may now verify and set the file permissions of your Grid Engine  
distribution.
```

```
This may be useful since due to unpacking and copying of your distribution  
your files may be inaccessible to other users.
```

```
We will set the permissions of directories and binaries to
```

```
755 - that means executable are accessible for the world
```

```
and for ordinary files to
```

```
644 - that means readable for the world
```

```
Do you want to verify and set your file permissions (y/n) [y] >> y
```

```
Verifying and setting file permissions and owner in >3rd_party<
```

```
Verifying and setting file permissions and owner in >bin<
```

```
Verifying and setting file permissions and owner in >ckpt<
```

```
Verifying and setting file permissions and owner in >examples<
```

```
Verifying and setting file permissions and owner in >install_execd<
```

```
Verifying and setting file permissions and owner in >install_qmaster<
```

```
Verifying and setting file permissions and owner in >mpi<
```

```
Verifying and setting file permissions and owner in >pvm<
```

```
Verifying and setting file permissions and owner in >qmon<
```

```
Verifying and setting file permissions and owner in >util<
```

```
Verifying and setting file permissions and owner in >utilbin<
```

```
Verifying and setting file permissions and owner in >catman<
```

```
Verifying and setting file permissions and owner in >doc<
```

```
Verifying and setting file permissions and owner in >man<
```

```
Verifying and setting file permissions and owner in >inst_sge<
```

```
Verifying and setting file permissions and owner in >bin<
```

```
Verifying and setting file permissions and owner in >lib<
```

```
Verifying and setting file permissions and owner in >utilbin<
```

```
Your file permissions were set
```


Hit <RETURN> to continue >>

12. Specify whether all of your grid engine system hosts are located in a single DNS domain.

Select default Grid Engine hostname resolving method

Are all hosts of your cluster in one DNS domain? If this is the case the hostnames

>hostA< and >hostA.foo.com<

would be treated as equal, because the DNS domain name >foo.com< is ignored when comparing hostnames.

Are all hosts of your cluster in a single DNS domain (y/n) [y] >>

- **If all of your grid engine system hosts are located in a single DNS domain, then answer y.**

Are all hosts of your cluster in a single DNS domain (y/n) [y] >> **y**

Ignoring domainname when comparing hostnames.

Hit <RETURN> to continue >>

- **If all of your grid engine system hosts are *not* located in a single DNS domain, then answer n.**

Are all hosts of your cluster in a single DNS domain (y/n) [y] >> **n**

The domainname is not ignored when comparing hostnames.

Hit <RETURN> to continue >>

Default domain for hostnames

Sometimes the primary hostname of machines returns the short hostname without a domain suffix like >foo.com<.

This can cause problems with getting load values of your execution hosts. If you are using DNS or you are using domains in your >/etc/hosts< file or your NIS configuration it is usually safe to define a default domain because it is only used if your execution hosts return the short hostname as their primary name.

If your execution hosts reside in more than one domain, the default domain parameter must be set on all execution hosts individually.

Do you want to configure a default domain (y/n) [y] >>

Press <RETURN> to continue.

- a. If you want to specify a default domain, then answer y.**

In the following example, `sun.com` is specified as the default domain.

```
Do you want to configure a default domain (y/n) [y] >> y
```

```
Please enter your default domain >> sun.com
```

```
Using >sun.com< as default domain. Hit <RETURN> to continue >>
```

b. If you do *not* want to specify a default domain, then answer n.

In the following example, `sun.com` is specified as the default domain.

```
Do you want to configure a default domain (y/n) [y] >> n
```

13. Press <RETURN> to continue.

```
Making directories
```

```
-----
```

```
creating directory: default/common
```

```
creating directory: /opt/nlge6/default/spool/qmaster
```

```
creating directory: /opt/nlge6/default/spool/qmaster/job_scripts
```

```
Hit <RETURN> to continue >>
```

14. Specify whether you want to use classic spooling or Berkeley DB.

For more information on how to determine the type of spooling mechanism you want, please see [“Database Server and Spooling Host” on page 19](#).

```
Setup spooling
```

```
-----
```

```
Your SGE binaries are compiled to link the spooling libraries
during runtime (dynamically). So you can choose between Berkeley DB
spooling and Classic spooling method.
```

```
Please choose a spooling method (berkeleydb|classic) [berkeleydb] >>
```

■ **If you want to specify Berkeley DB spooling, press <RETURN> to continue.**

```
Please choose a spooling method (berkeleydb|classic) [berkeleydb] >>
```

```
The Berkeley DB spooling method provides two configurations!
```

```
1) Local spooling:
```

```
The Berkeley DB spools into a local directory on this host (qmaster host)
```

```
This setup is faster, but you can't setup a shadow master host
```

```
2) Berkeley DB Spooling Server:
```

```
If you want to setup a shadow master host, you need to use
```

```
Berkeley DB Spooling Server!
```

```
In this case you have to choose a host with a configured RPC service.
```

```
The qmaster host connects via RPC to the Berkeley DB. This setup is more
failsafe, but results in a clear potential security hole. RPC communication
(as used by Berkeley DB) can be easily compromised. Please only use this
alternative if your site is secure or if you are not concerned about
security. Check the installation guide for further advice on how to achieve
failsafety without compromising security.
```

Do you want to use a Berkeley DB Spooling Server? (y/n) [n] >>

■ **If you want to use a Berkeley DB spooling server, enter y.**

Do you want to use a Berkeley DB Spooling Server? (y/n) [n] >> **y**

Berkeley DB Setup

Please, log in to your Berkeley DB spooling host and execute "inst_sge -db"
Please do not continue, before the Berkeley DB installation with
"inst_sge -db" is completed, continue with <RETURN>

Note – *Do not* press <RETURN> until you have completed the Berkeley DB installation on the spooling server.

a. Start a new terminal session or window.

b. Log in to the spooling server.

c. Install the software, as described in [“How to Install the Berkeley DB Spooling Server” on page 47](#).

d. After you have installed the software on the spooling server, return to the master installation window, and press <RETURN> to continue.

e. Enter the name of the spooling server.

In the following example, vector is the host name of the spooling server.

Berkeley Database spooling parameters

Please enter the name of your Berkeley DB Spooling Server! >> **vector**

f. Enter the name of the spooling directory.

In the following example, /opt/nlge6/default/spooldb is the spooling directory.

Please enter the Database Directory now!

Default: [/opt/nlge6/default/spooldb] >>
Dumping bootstrapping information
Initializing spooling database

Hit <RETURN> to continue >>

■ **If you do *not* want to use a Berkeley DB spooling server, enter n.**

Do you want to use a Berkeley DB Spooling Server? (y/n) [n] >> **n**

```

Hit <RETURN> to continue >>

Berkeley Database spooling parameters
-----

Please enter the Database Directory now, even if you want to spool locally
it is necessary to enter this Database Directory.

Default: [/opt/nlge6/default/spool/spooldb] >>
Specify an alternate directory, or press <RETURN> to continue.

creating directory: /opt/nlge6/default/spool/spooldb
Dumping bootstrapping information
Initializing spooling database

Hit <RETURN> to continue >>

```

■ **If you want to specify classic spooling, then enter classic.**

```

Please choose a spooling method (berkeleydb|classic) [berkeleydb] >> classic

Dumping bootstrapping information
Initializing spooling database

Hit <RETURN> to continue >>

```

15. Enter a group ID range

For more information, see [“Group IDs” on page 20](#).

```

Grid Engine group id range
-----

```

When jobs are started under the control of Grid Engine an additional group id is set on platforms which do not support jobs. This is done to provide maximum control for Grid Engine jobs.

This additional UNIX group id range must be unused group id's in your system. Each job will be assigned a unique id during the time it is running. Therefore you need to provide a range of id's which will be assigned dynamically for jobs.

The range must be big enough to provide enough numbers for the maximum number of Grid Engine jobs running at a single moment on a single host. E.g. a range like >20000-20100< means, that Grid Engine will use the group ids from 20000-20100 and provides a range for 100 Grid Engine jobs at the same time on a single host.

You can change at any time the group id range in your cluster configuration.

```

Please enter a range >> 20000-20100

```

```

Using >20000-20100< as gid range. Hit <RETURN> to continue >>

```

16. Verify the spooling directory for the execution daemon.

For information on spooling, see “[Spool Directories Under the Root Directory](#)” on page 18.

Grid Engine cluster configuration

Please give the basic configuration parameters of your Grid Engine installation:

<execd_spool_dir>

The pathname of the spool directory of the execution hosts. User >sgadmin< must have the right to create this directory and to write into it.

Default: [/opt/nlge6/default/spool] >>

17. Enter the email address of the user who should receive problem reports.

In this example, the user who will receive problem report is me@my.domain.

Grid Engine cluster configuration (continued)

<administrator_mail>

The email address of the administrator to whom problem reports are sent.

It's is recommended to configure this parameter. You may use >none< if you do not wish to receive administrator mail.

Please enter an email address in the form >user@foo.com<.

Default: [none] >> **me@my.domain**

Once you answer this question, the installation process is complete. Several screens of information will be displayed before the script exits. The commands that are noted in those screens are also documented in this chapter.

The upgrade process uses your existing configuration to customize the installation. You will see output similar to the following:

```
Creating >act_qmaster< file
Creating >sgemaster< script
Creating >sgeexecd< script
creating directory: /tmp/centry
Reading in complex attributes.
Reading in administrative hosts.
Reading in execution hosts.
Reading in submit hosts.
Reading in users:
    User "as114086".
    User "md121042".
Reading in usersets:
    Userset "defaultdepartment".
    Userset "deadlineusers".
    Userset "admin".
    Userset "bchem1".
```

```

Userset "bchem2".
Userset "bchem3".
Userset "bchem4".
Userset "damtp7".
Userset "damtp8".
Userset "damtp9".
Userset "econ1".
Userset "staff".
Reading in calendars:
  Calendar "always_disabled".
  Calendar "always_suspend".
  Calendar "test".
Reading in projects:
  Project "ap1".
  Project "ap2".
  Project "high".
  Project "low".
  Project "p1".
  Project "p2".
  Project "staff".
Reading in parallel environments:
  PE "bench_tight".
  PE "make".
Creating settings files for >.profile/.cshrc<

```



Caution – Do not rename any of the binaries of the distribution. If you use any scripts or tools in your cluster that monitor the daemons, make sure to check for the new names.

18. Create the environment variables for use with the grid engine software.

Note – If no cell name was specified during installation, the value of *cell* is default.

- If you are using a C shell, type the following command:

```
% source sge-root/cell/common/settings.csh
```

- If you are using a Bourne shell or Korn shell, type the following command:

```
$ . sge-root/cell/common/settings.sh
```

19. Install or upgrade the execution hosts.

There are two ways that you can install the N1 Grid Engine 6 software on your execution hosts: installation or upgrade. If you *install* the execution hosts, the local spool directory configuration, and some *execd* parameters will be overwritten. If you *upgrade* the execution hosts, those files will remain untouched.

- Upgrade the software on the execution host.

You need to log into each execution host, and run the following command:

```
# sge-root/inst_sge -x -upd
```

■ **Install the software on the execution host.**

a. If you only have a few execution hosts, you can install them interactively.

You need to log into each execution host, and run the following command:

```
# sge-root/inst_sge -x
```

Complete instructions for installing execution hosts interactively are in [“How to Install Execution Hosts” on page 42.](#)

b. If you have a large number of execution hosts, you should consider installing them non-interactively.

Instructions for installing execution hosts in an automated way are in [“Using the inst_sge Utility and a Configuration Template” on page 51.](#)

20. If you have configured load sensors on your execution hosts, you will need to copy these load sensors to the new directory location.

21. Check your complexes.

Both the structure of complexes and the rules for configuring complexes have changed. You can use `qconf -sc` to list your complexes. Review the log file that was generated during the master host upgrade, `update.pid`. The `update.pid` file will be placed in the master host spool directory, which is `sge-root/cell/spool/by` default.

If necessary, you can use `qconf -mc` to reconfigure your complexes. For details, see Chapter 3, “Configuring Complex Resource Attributes,” in *N1 Grid Engine 6 Administration Guide*.

22. Reconfigure your queues.

During the upgrade process, a single default cluster queue is created. Within this queue you will find all of your installed execution hosts. It is recommended that you reconfigure your queues. For details, see “Configuring Queues” in *N1 Grid Engine 6 Administration Guide*.

Verifying the Installation

The verification phase includes the following tasks:

- Ensuring that the daemons are running on the master host
- Ensuring that the daemons are running on all execution hosts
- Ensuring that you can run simple commands
- Submitting test jobs

Verifying the Installation

To ensure that the grid engine system daemons are running, look for the `sge_qmaster` and `sge_schedd` daemons on the master host, and then the `sge_execd` daemon on the execution hosts. Once you have verified that the daemons are running, you can try to use commands, and prepare to submit jobs.

Note – If no cell name was specified during installation, the value of `cell` is `default`.

▼ How to Verify That the Daemons Are Running on the Master Host

- Steps**
1. Log in to the master host.
 2. Verify that the daemons are running by typing one of the following commands, depending on the operating system you are running.
 - On BSD-based UNIX systems, type the following command.

```
% ps -ax | grep sge
```

- On systems running a UNIX System 5-based operating system (such as the Solaris Operating System), type the following command.

```
% ps -ef | grep sge
```

3. Verify that the daemons are running by looking through the output for **sge** strings that are similar to the following examples.

Specifically, you should see that the `sge_qmaster` daemon and the `sge_schedd` daemon are running.

- On a BSD-based UNIX system, you should see output such as the following example.

```
14676 p1 S < 4:47 /gridware/sge/bin/solaris/sge_qmaster
```

```
14678 p1 S < 9:22 /gridware/sge/bin/solaris/sge_schedd
```

- On a UNIX System 5-based system, you should see output such as the following example.

```
root 439 1 0 Jun 2 ? 3:37 /gridware/sge/bin/solaris/sge_qmaster
```

```
root 446 1 0 Jun 2 ? 3:37 /gridware/sge/bin/solaris/sge_schedd
```

4. If you *do not see* the appropriate strings, one or more daemons that are required on the master host are not running.

- a. Look in the file `sge-root/cell/common/act_qmaster` to see if you really are on the master host.

- b. Restart the daemons by hand.

To start the master host daemons, `sge_qmaster` and `sge_schedd`:

```
# sge-root/cell/common/sgemaster start
```

5. Continue the verification process.

After you have verified that the master host and the execution host daemons are running, continue the verification process. See [“How to Run Simple Commands” on page 83](#).

▼ How to Verify That the Daemons Are Running on the Execution Hosts

- Steps**
1. Log in to the execution hosts on which you ran the execution host installation procedure.
 2. Verify that the daemons are running by typing one of the following commands, depending on the operating system you are running.

- On BSD-based UNIX systems, type the following command.

```
% ps -ax | grep sge
```

- On systems running a UNIX System 5--based operating system (such as the Solaris Operating System), type the following command.

```
% ps -ef | grep sge
```

3. Verify the daemons are running by looking for the `sge_execd` string in the output.

Specifically, you should see that the `sge_execd` daemon is running.

- On a BSD-based UNIX system, you should see output such as the following example.

```
14688 p1 S < 4:27 /gridware/sge/bin/solaris/sge_execd
```

- On a UNIX System 5-based system, such as the Solaris Operating System, you should see output such as the following example.

```
root 171 1 0 Jun 22 ? 7:11 /gridware/sge/bin/solaris/sge_execd
```

4. If you *do not see* similar output, the daemon required on the execution host is not running. Restart the daemon by hand.

```
# sge-root/cell/common/sgeexecd start
```

5. Continue the verification process.

After you have verified that the master host and the execution host daemons are running, continue the verification process. See [“How to Run Simple Commands” on page 83](#).

▼ How to Run Simple Commands

If both the necessary daemons are running on the master and execution hosts, the grid engine software should be operational. Check by issuing a trial command.

- Steps** 1. Log in to either the master host or another administrative host.

In your standard search path, make sure to include `sge-root/bin`.

2. From the command line, type the following command.

```
% qconf -sconf
```

This `qconf` command displays the current global cluster configuration (see “Basic Cluster Configuration” in *N1 Grid Engine 6 Administration Guide*).

If this command fails, your `SGE_ROOT` environment variable is not set correctly.

- a. Check whether the environment variables `SGE_EXECD_PORT` and `SGE_QMASTER_PORT` are set in the script files,

sge-root/cell/common/settings.csh or *sge-root/cell/common/settings.sh*.

Note – If no cell name was specified during installation, the value of *cell* is default.

- If so, make sure that the environment variables `SGE_EXECD_PORT` and `SGE_QMASTER_PORT` are set to the correct value before you try the command again.

- If not, verify whether your NIS services map contains entries for `sge_qmaster` and `sge_execd`.

If the `SGE_EXECD_PORT` and `SGE_QMASTER_PORT` variables are not used in these files, then the services database (for example, `/etc/services` or the NIS services map) on the machine from which you run the command must provide entries for both `sge_qmaster` and `sge_execd`. If it doesn't, add such an entry to the machine's services database, giving it the same value as is configured on the master host.

b. Retry the `qconf` command.

3. Try to submit test jobs.

▼ How to Submit Test Jobs

Before you start submitting batch scripts to the grid engine system, check to see whether your site's standard shell resource files (`.cshrc`, `.profile` or `.kshrc`) as well as your personal resource files contain commands such as `stty`. Batch jobs do not have a terminal connection by default, and therefore calls to `stty` result in an error.

Steps 1. Log in to the master host.

2. Type the following command.

```
% rsh exec-host-name date
```

exec-host-name refers to one of the already installed execution hosts. You should try this test on all execution hosts if your login or home directories differ from host to host. The `rsh` command should give you output similar to the `date` command run locally on the master host. If there are any additional lines containing error messages, you must fix the cause of the errors before you can run a batch job successfully.

For all command interpreters you can check on an actual terminal connection before you run a command such as `stty`.

The following is an example of a Bourne shell script to test the terminal connection.

```
tty -s
if [ $? = 0 ]; then
    stty erase ^H
fi
```

The following example shows C Shell syntax.

```
tty -s
if ( $status = 0 ) then
    stty erase ^H
endif
```

3. Submit one of the sample scripts contained in the *sge-root/examples/jobs* directory.

```
% qsub sge-root/examples/jobs/simple.sh
```

4. Use the **qstat** command to monitor the job's behavior.

For more information about submitting and monitoring batch jobs, see "Submitting Batch Jobs" in *N1 Grid Engine 6 User's Guide*.

5. After the job finishes executing, check your home directory for the redirected **stdout/stderr** files *script-name.ejob-id* and *script-name.ojob-id*.

job-id is a consecutive unique integer number assigned to each job.

In case of problems, see Chapter 8, "Fine Tuning, Error Messages, and Troubleshooting," in *N1 Grid Engine 6 Administration Guide*.

Removing the Grid Engine Software

This chapter describes the two ways that the grid engine software can be removed:

- “Removing the Software Interactively” on page 87
- “Removing the Software Using the `inst_sge` Utility and a Configuration Template” on page 88

Removing the Software Interactively

Note – Remove the software from the execution hosts before removing it from the master host. If you remove the software from the master host first, you cannot automate the removal of the software from the execution hosts.

▼ How to Remove the Software Interactively

- Steps** 1. Ensure that your environment variables are set up properly.

Note – If no cell name was specified during installation, the value of *cell* is default.

- If you are using a C shell, type the following command:

```
# source sge-root/cell/common/settings.csh
```

- If you are using a Bourne shell or Korn shell, type the following command:

```
# . sge-root/cell/common/settings.sh
```

2. On the master host, issue the `sge-root/inst_sge` command.

This example uninstalls the execution hosts, `host1`, `host2` and `host3`.

```
# sge-root/inst_sge -ux -host "host1 host2 host3"
```

Note – You are not prompted for any information during this process. However, the output from this process will be displayed to the terminal window where you run the command.

3. (Optional) If you have any shadow master hosts, uninstall them now by typing:

```
# sge-root/inst_sge -usm -host "host4"
```

4. Uninstall the master host.

```
# sge-root/inst_sge -um
```

Removing the Software Using the `inst_sge` Utility and a Configuration Template

One difference between interactive and automated uninstallation is that the automated method suppresses output during the process. The other difference is that the automate method requires a properly formatted configuration file.

Note – Remove the software from the execution hosts before removing it from the master host. If you remove the software from the master host first, you cannot automate the removal of the software from the execution hosts.

▼ How to Remove the Software Interactively

- Steps**
1. Ensure that your environment variables are set up properly.

Note – If no cell name was specified during installation, the value of *cell* is default.

- If you are using a C shell, type the following command:

```
# source sge-root/cell/common/settings.csh
```

- If you are using a Bourne-shell or Korn shell, type the following command:

```
# . sge-root/cell/common/settings.sh
```

2. Create a copy of the configuration template,
`sge-root/util/inst_sge_modules/inst_sge_template.conf`.

```
# cd sge-root/util/inst_sge_modules/  
# cp inst_sge_template.conf my_configuration.conf
```

3. Edit your configuration template.

Every host that is in the EXEC_HOST_LIST_RM list will be automatically removed.

```
# Remove this execution hosts in automatic mode  
EXEC_HOST_LIST_RM="host1 host2 host3 host4"
```

4. On the master host type the `sge-root/inst_sge` command.

This example uninstalls the execution hosts, host1, host2 and host3.

Type the following command as one string (the command is too long to fit on one line in this guide), with a space between the -auto and the `sge-root/util/inst_sge_modules/my_configuration.conf` components.

```
# sge-root/inst_sge -ux -auto  
sge-root/util/inst_sge_modules/my_configuration.conf
```

Note – You are not prompted for any information during this process. However, the output from this process will be displayed to the terminal window where you run the command.

5. (Optional) If you have any shadow master hosts, uninstall them.

Type the following command as one string (the command is too long to fit on one line in this guide), with a space between the -auto and the `sge-root/util/inst_sge_modules/my_configuration.conf` components.

```
# sge-root/inst_sge -usm -auto  
sge-root/util/inst_sge_modules/my_configuration.conf
```

6. Uninstall the master host.

Type the following command as one string (the command is too long to fit on one line in this guide), with a space between the `-auto` and the `sge-root/util/inst_sge_modules/my_configuration.conf` components.

```
# sge-root/inst_sge -um -auto  
sge-root/util/inst_sge_modules/my_configuration.conf
```

Installing the Accounting and Reporting Console

This chapter describes the steps to install the Accounting and Reporting console software (ARCo):

- “Setting Up the Database Software” on page 91
- “Install the Accounting and Reporting Software” on page 95

Setting Up the Database Software

Database software must be installed and configured properly before you can install and use the Accounting and Reporting Console. This section describes how to set up the database software using either a PostgreSQL database or an Oracle database.

Set up the PostgreSQL Database Software

Detailed information on the PostgreSQL database software can be found in the Postgres documentation (<http://www.postgresql.org/docs/7.4/static/index.html>).

▼ How to Start the Database Server

Once the PostgreSQL software is installed, you can start the database server.

Before You Begin

Download, compile, and install the PostgreSQL database software. Create a user account to own the database processes. Usually, this user is `postgres`. Add the PostgreSQL `bin` directory and necessary `LD_LIBRARY_PATH` settings to your environment.

Steps 1. Create a home directory for the postgres user.

In this example, the home directory is `/space/postgres/data`.

```
% mkdir -p /space/postgres/data
% useradd -d /space/postgres postgres
% chown postgres /space/postgres/data
% su - postgres
```

2. Continue as described in the PostgreSQL documentation to set up a database.

```
> initdb -D /space/postgres/data

creating directory /space/postgres/data... ok
creating directory /space/postgres/data/base... ok
creating directory /space/postgres/data/global... ok
creating directory /space/postgres/data/pg_xlog... ok
creating directory /space/postgres/data/pg_clog... ok
creating template1 database in /space/postgres/data/base/1... ok
creating configuration files... ok
initializing pg_shadow... ok
enabling unlimited row size for system tables... ok
initializing pg_depend... ok
creating system views... ok
loading pg_description... ok
creating conversions... ok
setting privileges on built-in objects... ok
vacuuming database template1... ok
copying template1 to template0... ok

Success. You can now start the database server using:
    postmaster -D /space/postgres/data
    or
    pg_ctl -D /space/postgres/data -l logfile start
```

3. Make the following changes to the `pg_hba.conf` file.

This change permits unrestricted and password free access to the database superuser `postgres` but requires md5 encrypted passwords for all other database users. Replace `nnn.nnn.nnn` with your subnet address without the trailing 0. You also can add access rules on a per-host basis by adding similar lines with host IP addresses.

```
# TYPE DATABASE USER IP-ADDRESS IP-MASK METHOD
local all postgres trust
local all all md5
# IPv4-style local connections:
#host all all nnn.nnn.nnn.0 255.255.255.0 md5
```

4. Make the following changes to the `postgresql.conf` file, to enable TCP/IP access from other hosts.

Note – Ensure that the value of `shared_buffers` is at least twice the value of `max_connections`.

```
tcPIP_socket = true
max_connections = 40    (increase if necessary)
```

5. Start the database.

In this example, `-i` enables TCP/IP communication, and `-S` is for “silent” mode.

```
> postmaster -S -i
```

6. Verify the installation.

As the postgres user, try the following commands:

```
% su - postgres

> createuser -P test_user
Enter password for new user:
Enter it again:
Shall the new user be allowed to create databases? (y/n) y
Shall the new user be allowed to create more new users? (y/n) n
CREATE USER

> createdb -O test_user -E UNICODE test
CREATE DATABASE
```

7. Execute commands as the database super user.

```
> psql test
Welcome to psql 7.3, the PostgreSQL interactive terminal.
Type:  \copyright for distribution terms
       \h for help with SQL commands
       \? for help on internal slash commands
       \g or terminate with semicolon to execute query
       \q to quit

test=# create table test (x int, y text);
CREATE TABLE
test=# insert into test values (1, 'one');
INSERT 16982 1
test=# insert into test values (2, 'two');
INSERT 16983 1
test=# select * from test;
 x | y
---+---
 1 | one
 2 | two
(2 rows)

test=# \q
```

```

> psql -U test_user test
Password:
Welcome to psql 7.4.1, the PostgreSQL interactive terminal.

Type: \copyright for distribution terms
      \h for help with SQL commands
      \? for help on internal slash commands
      \g or terminate with semicolon to execute query
      \q to quit
test=>

```

8. After you have successfully tested your database, you should proceed to the next task, [“How to Set Up a PostgreSQL Database” on page 94.](#)

▼ How to Set Up a PostgreSQL Database

- Steps** 1. Log in as the database superuser, for example, postgres.

```
# su - postgres
```

2. Create the owner of the database.

```

> createuser -P arco_write
Enter password for new user:
Enter it again:
Shall the new user be allowed to create databases? (y/n) y
Shall the new user be allowed to create more new users? (y/n) n
CREATE USER

```

3. Create the database for accounting and reporting.

```

> createdb -O arco_write arco
CREATE DATABASE

```

4. Create a database user for reading the database.

If you do not use the arco_read user, you will need to modify the privileges script that is used in the next step.

```

> createuser -P arco_read
Enter password for new user:
Enter it again:
Shall the new user be allowed to create databases? (y/n) n
Shall the new user be allowed to create more new users? (y/n) n
CREATE USER

```

▼ How to Set Up an Oracle Database

- Steps** 1. Ask your database administrator for an instance of an Oracle database.

You need two database users for this instance, `arco_write` and `arco_read`. The `arco_write` user must be able to create or alter tables, views, and indexes. Privileges for the `arco_read` user are set later by an SQL script.

2. Ask your database administrator for the connection string to the database.

Install the Accounting and Reporting Software

▼ How to Set Up dbWriter

- Steps** 1. Extract the accounting and reporting software.

- **The tar Method**

```
# cd sge-root
```

Type the following command as one string (the command is too long to fit on one line in this guide), with a space between the `-dc` and the path to the tar file.

```
# gunzip -dc  
cdrom_mount_point/N1_Grid_Engine_6u4/ARCo/tar/nlge-6_0-arco-1_0.tar.gz | tar xvpf -
```

- **The pkgadd Method**

At the command prompt, type the following command and respond to the script questions.

```
# cd cdrom_mount_point/N1_Grid_Engine_6u4/ARCo/Packages  
# pkgadd -d . SUNWsgeea
```

2. As the administrative user, set your environment variables.

- **If you are using a Bourne shell or Korn shell, type the following command:**

```
$ . sge-root/default/common/settings.sh
```

- **If you are using a C shell, type the following command:**

```
% source sge-root/default/common/settings.csh
```

3. Change the global configuration to enable reporting.

For details on how to enable reporting, see “Report Statistics (ARCo)” in *N1 Grid Engine 6 Administration Guide*.

```
% qconf -mconf  
<.....>
```

```
reporting_params    accounting=true \
reporting=true flush_time=00:00:15 joblog=true \
sharelog=00:00:00<.....>
```

By default, no report variables are activated. You can use the `qconf` command to enable statistics gathering on specific variables, as shown in the following example.

```
% qconf -me global
hostname            global
<.....>
report_variables    cpu,np_load_avg,mem_free,virtual_free
<.....>
```

4. Install the dbWriter software.

Note – With N1GE6 update 4 the dbwriter needs to be installed as user root.

```
# cd sge-root/dbwriter
% cd sge-root/dbwriter
% su
password:
# ./inst_dbwriter
# ./inst_dbwriter

Welcome to the Grid Engine installation
-----

Grid Engine dbWriter installation
-----
The dbWriter installation will take approximately 5 minutes

Hit <RETURN> to continue >>
```

5. Specify the location of *sge-root*, and the name of your cell or cells.

```
Hit <RETURN> to continue >>

Checking $SGE_ROOT directory
-----

The Grid Engine root directory is:

    $SGE_ROOT = /opt/nlge6

If this directory is not correct (e.g. it may contain an automounter
prefix) enter the correct path to this directory or hit <RETURN>
to use default [/opt/nlge6] >>

Your $SGE_ROOT directory: /opt/nlge6

Hit <RETURN> to continue >>

Grid Engine cells
```

Grid Engine supports multiple cells.

If you are not planning to run multiple Grid Engine clusters or if you don't know yet what is a Grid Engine cell it is safe to keep the default cell name

default

If you want to install multiple cells you can enter a cell name now.

The environment variable

\$SGE_CELL=<your_cell_name>

will be set for all further Grid Engine commands.

Enter cell name [default] >>

Using cell >default<.

Hit <RETURN> to continue >>

6. Specify the location of your Java™ Software Development Kit.

Version 1.4.2 or higher is required. If your JAVA_HOME environment variable is set, the script will use that as a default value.

Please enter the path to your java 1.4 installation [/usr/java] >>/opt/j2sdk1.4.2_06

7. Specify the connection parameters for the reporting database.

Setup your database connection parameters

Enter your database type (o = Oracle, p = PostgreSQL) [p] >> p

Please enter the name of your postgres db host []>> my-host.my-domain

Please enter the port of your postgres db [5432] >>

Please enter the name of your postgres database [arco] >>

8. Enter the user name and password of the database user.

Please enter the name of the database user [arco_write] >>

Please enter the password of the database user >>

Please retype the password >>

9. Enter the name of the database schema.

■ If the JDBC driver is found, you will be asked for the name of the schema.

For PostgreSQL this value is normally public. For oracle this should be the username of the database owner (arco_write).

Please enter the name of the database schema [public] >>

```
Search for the jdbc driver org.postgresql.Driver
in directory /opt/nlge6/dbwriter/lib .....
found in /opt/nlge6/dbwriter/lib/pg73jdbc2.jar
```

```
OK, jdbc driver found
```

- **If no corresponding JDBC driver is found, you are asked to copy the JAR file of the database driver into the *sgc-root/dbwriter/lib* directory.**

After you copy the JAR file to the correct location, press RETURN, and the search repeats.

```
Error: jdbc driver org.postgresql.Driver
      not found in any jar file of directory
      /opt/nlge6/dbwriter/lib
```

```
Please copy a jdbc driver for your database into
this directory!
```

```
Press enter to continue >>
```

10. Verify that the database has been set up correctly.

```
Should the connection to the database be tested? (y/n) [y] >>
```

- **If the test succeeds, you will be notified.**

```
Test db connection to 'jdbc:postgresql://my-host.my-domain:5432/arco' ... OK
```

- **If the test fails, you are given the option to repeat the set up procedure.**

```
Test db connection to 'jdbc:postgresql://my-host.my-domain:5432/arco' ... Failed
Do you want to repeat database connection setup? (y/n) [y] >>
```

11. Database model initialization or upgrade

During the next step, the database tables are created or updated and the user `arco_read` is granted limited access to the database tables. The ARCo web application connects to the database using the user `arco_readuser`.

```
Query db version ... no sgc tables found
New version of the database model is needed
```

```
Should the database model be upgraded to version 1? (y/n) [y] >>
```

```
The ARCo web application connects to the database
with a user which has restricted access.
The name of this database user is needed to grant
him access to the sgc tables.
```

```
Please enter the name of this database user [arco_read] >>
Upgrade to database model version 1 ... Install version 6.0 (id=0) -----
Create table sgc_job
Create index sgc_job_idx0
Create index sgc_job_idx1
create table sgc_job_usage
```

```

Create table sge_job_log
Create table sge_job_request
Create table sge_job_request
Create table sge_queue
Create index sge_queue_idx0
Create table sge_queue_values
Create index sge_queue_values_idx0
Create table sge_host
Create index sge_host_idx0
Create table sge_host_values
Create index sge_host_values_idx0
Create table sge_department
Create index sge_department_idx0
Create table sge_department_values
Create index sge_department_values_idx0
Create table sge_project
Create index sge_project_idx0
Create table sge_project_values
Create index sge_project_values_idx0
Create table sge_user
Create table sge_user_values
Create index sge_user_values_idx0
Create table sge_group
Create index sge_group_idx0
Create table sge_group_values
Create index sge_group_values_idx0
Create table sge_share_log
Create view view_accounting
Create view view_job_times
Create view view_jobs_completed
Create view view_job_log
Create view view_department_values
Create view view_group_values
Create view view_host_values
Create view view_project_values
Create view view_queue_values
Create view view_user_values
committing changes
version 6.0 (id=0) successfully installed
Install version 6.0u1 (id=1) -----
Create table sge_version
Update view view_job_times
Update version table
committing changes
version 6.0u1 (id=1) successfully installed
OK

```

12. Specify how often the dbWriter program should check the grid engine system log files for new data.

Please enter the interval between two dbwriter runs in seconds [60] >>

13. Specify the spool directory for the dbwriter. The dbwriter log files are stored in this directory. At startup the dbwriter process writes its pid in the file dbwriter.pid in this directory.

Please enter the path of the dbwriter spool directory [\$SGE_ROOT/\$SGE_CELL/spool/dbwriter

14. Enter the location of the file containing the rules for calculating derived values.

Based on the accounting and reporting data, the dbWriter program calculates some derived values. The *derived values* are reporting information that are calculated from one or more raw values. The dbWriter program also allows you to delete data from the reporting database, when that data is not longer needed. The rules governing the derived value calculations and data deletion are stored in a file. The dbWriter program distribution contains an example file for a PostgreSQL database and an example file for an Oracle database. The example files are \$SGE_ROOT/dbwriter/database/postgres/dbwriter.xml and \$SGE_ROOT/dbwriter/database/oracle/dbwriter.xml

You can accept the default file location, or you can specify a alternative path.

```
Please enter the file with the derived value rules
[$SGE_ROOT/dbwriter/database/postgres/dbwriter.xml] >>
```

15. Enter the level of logging that the dbWriter program should use.

The dbWriter can run with different debug levels
Possible values: WARNING INFO CONFIG FINE FINER FINEST
Please enter the debug level of the dbwriter [INFO] >>

16. Verify the settings.

If you answer n, you are given the option to repeat the set up.

All parameters are now collected

```
-----
SGE_ROOT=/opt/nlge6
SGE_CELL=default
JAVA_HOME=/usr/java (java version "1.4.2")
DB_URL=jdbc:postgresql://my-host.my-domain:5432/arco
DB_USER=arco_write
INTERVAL=60
REPORTING_FILE=/opt/nlge6/default/common/reporting
DERIVED_FILE=/opt/nlge6/dbwriter/database/postgres/dbwriter.xml
DEBUG_LEVEL=INFO
```

Are this settings correct? (y/n) [y] >> **y**

The installation scripts creates a start script, *sge-root/dbwriter/bin/sgedbwriter*. Your configuration parameters are stored in *sge-root/cell/common/dbwriter.conf*. If any configuration changes are necessary, you can edit the *dbwriter.conf* file or repeat the installation script.

Create configuration file for dbWriter in
/opt/nlge6/default/common

17. The installation script prompts you to choose whether or not to install a boot time startup script for the dbwriter:

```
dbwriter startup script
-----
```

```

We can install the startup script that will
start dbwriter at machine boot (y/n) [y] >> y
Installing startup script /etc/rc2.d/S96sgedbwriter
Installation of dbWriter completed

```

18. Start the dbWriter program.

```
# /etc/init.d/sgedbwriter start
```

▼ How to Install Sun Web Console

- Steps** 1. Check whether Sun Web Console is already available on your system (this is usually the case for Solaris 10 and on newer Solaris 9 versions). As root, you can check using the following command:

```
# smcwebserver -V
Version 2.2.1
```

ARCo for N1GE6 update 4 requires Sun Web Console 2.2.1 or higher.

2. If you need to install the console, extract the web console package under a temporary directory.

```
# cd /tmp
# umask 022
# mkdir swc
# cd swc
```

Type the following command as one string (the command is too long to fit on one line in this guide), with a space between the `xvf` and the path to the tar file.

```
# tar xvf
cdrom_mount_point/N1_Grid_Engine_6u4/SunWebConsole/tar/swc_sparc_2.2.1.tar
```

3. If the user `noaccess` and the group `noaccess` do not exist in your password file or NIS passwd map, add them by typing:

```
# groupadd -g 60002 noaccess
# useradd -u 60002 -g 60002 -d /tmp -s /bin/sh -c "No Access User" noaccess
```

Note – On some operating systems, using `/bin/csh` as the default shell may cause the installation to fail. If ARCo will not install, and you see the error message `Server not started! No management applications registered` try setting the default shell as `/bin/sh` for `noaccess`.

4. If you are running SuSE 9.0, create symbolic links for each of the `/etc/rc#.d` directories.

```
# ln -s /etc/rc.d/rc0.d /etc/rc0.d
# ln -s /etc/rc.d/rc1.d /etc/rc1.d
```

```
# ln -s /etc/rc.d/rc2.d /etc/rc2.d
```

5. Run the Sun Web Console setup script.

```
# ./setup -n
<....>
Installation complete.

Starting Sun(TM) Web Console Version 2.2.1...
See /var/log/webconsole/console_debug_log for server logging information

The web console is installed but not started until after the ARCo console
installation. Once the console is installed, you can stop, start, or restart the console
at any time, using the following commands:

# /usr/sadm/bin/smcwebserver start
# /usr/sadm/bin/smcwebserver stop
# /usr/sadm/bin/smcwebserver restart
```

▼ How to Install the Accounting and Reporting Console

Steps 1. Change directory to *sge-root/reporting*.

```
# cd sge-root/reporting
```

2. Use the *inst_reporting* script to install the software.

```
# ./inst_reporting

Welcome to the  N1 SGE reporting module installation
-----
The installation will take approximately 5 minutes

Hit <RETURN> to continue >>
```

3. The install script checks for the existence of the SGE_ROOT directory and SGE_CELL name. If you already created these parameters, the script continues.

4. Enter the path to your Java Software Development Kit.

Version 1.4.2 or higher is required. If your JAVA_HOME environment variable is set, the script will use that as a default value.

```
Please enter the path to your java 1.4 installation [] >> /opt/j2sdk1.4.2_06
```

5. Specify the directory where the accounting and reporting software can store its results.

If this directory does not exist, it will be created for you.

```
Spool directory
-----
```

In the spool directory the N1 SGE reporting module will store all queries and results

Please enter the path to the spool directory [/var/spool/arco] >>

6. Specify the parameters for the database connection.

Database Setup

Enter your database type (o = Oracle, p = PostgreSQL) [p] >> o

Please enter the name of your oracle db host [] >> *my-host*

Please enter the port of your oracle db [1521] >>

Please enter the name of your oracle database [arco] >>

7. Specify an accounting and reporting database user.

Do not use the same database user as you did for the dbwriter application. For security reasons, it is recommended that the database user for accounting and reporting only have read permission for the database tables.

Please enter the name of the database user [arco_read] >>

Please enter the password of the database user >>
Please retype the password >>

Please enter the name of the database schema [arco_write] >>

Search for the jdbc driver oracle.jdbc.driver.OracleDriver
in directory /opt/nlge/reporting/WEB-INF/lib ...
found in /opt/nlge/reporting/WEB-INF/lib/classes12.jar
Should the connection to the database be tested? (y/n) [y] >> **y**

Test db connection to 'jdbc:oracle:thin:@my-system:1521:arco' ... OK
h150

The name of the database schema depends on your database. For a Postgres database, the database schema name should be public. For Oracle the name of the database schema should be equal to the name of the user account which is used by the dbwriter (arco_write).

Please enter the name of the database schema [arco_write] >>

Searching for the jdbc driver oracle.jdbc.driver.OracleDriver

OK, jdbc driver found

Should the connection to the database be tested? (y/n) [y] >> y

Test db connection to 'jdbc:oracle:thin:@my-system:1521:arco' ... OK

8. Enter the login names of users who are allowed to store the queries and results.

Configure users with write access

```
Users: sge-admin
Enter a login name of a user (Press enter to finish) >> user2
Users: sge-admin user2
Enter a login name of a user (Press enter to finish) >>
-----
```

Note – After installation, you can add or delete authorized users by editing the config.xml file. See the information at the end of this chapter.

9. Verify the information.

All parameters are now collected

```
-----
      SPOOL_DIR=/var/spool/arco
      DB_URL=jdbc:oracle:thin://my-system:1521/arco
      DB_USER=arco_read
ARCO_WRITE_USERS=user1 user2
```

Are this settings correct? (y/n) [y] >> **y**

Shutting down Sun(TM) Web Console Version 2.2.1...

10. If a previous version of ARCo had been installed you will be asked to delete it:

```
Found old versions of the N1 SGE reporting module
-----
Should the application com.sun.grid.arco_6ul be deleted? (y/n) [n] >> y
```

Unregistering com.sun.grid.arco_6ul.

11. Create the query directory.

If the query directory already exists, it will be created. The example queries will be installed. Existing queries will not be replaced.*sge-root*/reporting/database/example_queries/queries.

Directory /var/spool/arco does not exist, create it? (y/n) [y] >> **y**

```
Create query directory /var/spool/arco
Create query directory /var/spool/arco/queries
Copy query Accounting_per_Department.xml ... OK
Copy query Accounting_per_Project.xml ... OK
Copy query Accounting_per_User.xml ... OK
Copy query Average_Job_Turnaround_Time.xml ... OK
Copy query Average_Job_Wait_Time.xml ... OK
Copy query Host_Load.xml ... OK
Copy query Job_Log.xml ... OK
Copy query Number_of_Jobs_completed.xml ... OK
```



```
Copy query Queue_Consumables.xml ... OK
Copy query Statistics.xml ... OK
Copy query Wallclock_time.xml ... OK

Create query directory /var/spool/arco/results
Register the N1 SGE reporting module in the webconsole

    Registering com.sun.grid.arco_6u4.

Starting Sun(TM) Web Console Version 2.2.1...
See /var/log/webconsole/console_debug_log for server logging information
```

12. Check the log file for error or warning messages.

```
# more /var/log/webconsole/console_debug_log
```

The accounting and reporting logs are written to the /var/log/webconsole/console_debug_log file. The default log level is INFO, but you can modify the log level from the command line:

```
# smreg add -p -e arco_logging_level=FINE
```

The new log take effect the next time the console is started or restarted. The possible log levels are WARNING, INFO, FINE, FINER, and FINEST.

13. Connect to the Sun Web Console by accessing the following URL in your browser. Replace *hostname* with the name of your master host.

```
https://hostname:6789
```

14. Login with your UNIX account.

15. Select N1 Grid Engine 6 Accounting and Reporting Console.

▼ How to Add Authorized ARCo Users

During the installation of the ARCo reporting module, the installer is asked to enter a list of users who should have write permissions to the ARCo system. Only those users are allowed save modifications on ARCo.

- Steps**
1. Depending on the web console version you are using, the list of authorized users is stored in /var/opt/webconsole/webapps/reporting/config.xml or /usr/share/webconsole/webapps/reporting/config.xml.
 2. After editing this file you have to restart the sun web console:

```
# smcwebserver restart
```


Microsoft Services For UNIX

Overview

Microsoft Windows Services for UNIX (SFU) makes it possible to integrate some Windows operating systems into existing UNIX environments. It provides components that simplify network administration and user management across the UNIX and Windows platform.

SFU provides Interix a complete, high-performance UNIX environment that provides UNIX shells like `csh` or `ksh`, several hundred tools and utilities, and a complete set of development tools and libraries which make it possible to port and use your UNIX-based applications to the Interix subsystem.

Windows Services for UNIX provides:

- In combination with Sun N1 Grid Engine the ability to integrate Windows hosts into N1GE clusters. This means that the execution and client environment of N1GE can be used on Microsoft Windows hosts.
- Services and commands to access the network file system (NFS). This makes it possible to share files between the UNIX and Windows environment
- A user mapping service which might access account and password services on UNIX and Windows systems (PCNFS, NIS)
- "single sign-on" capability for the Windows and UNIX environment. Passwords can be synchronized and authentication credentials can be mapped between the UNIX and Windows operating systems.
- The ability to execute UNIX shell scripts and applications to run on Windows-based computers in full-featured UNIX environments.

The following information describes the necessary steps to accomplish the installation of SFU. This document describes:

- The unsupported N1GE functionality.

- The SFU system requirements.
- Information to consider before SFU installation.
- The location of documentation which troubleshoots some common post installation and operation problems which might occur with SFU.

Unsupported N1GE Functionality

The following parts/applications which are part of a standard N1GE installation on UNIX operating systems are not supported in a Microsoft Windows environment and therefore cannot be used on Windows Hosts:

- Master and Scheduler (*sge_qmaster*, *sge_shadowd*, *sge_schedd*)
- Graphical User Interface (*qmon*)
- DRMAA
- CSP
- *qsh* client command

System Requirements

The following requirements apply to the installation of Microsoft Services For UNIX.

- The system must have Internet Explorer version 5.0 or later installed prior to running SFU setup.
- The minimum hard disk requirements for installing SFU depends on which components you are installing. The maximum disk space requirement to install SFU components is 360 MB. The minimum disk space required is 20 MB. SFU must be installed on a partition that is formatted with the NTFS file system.
- You cannot install SFU on a system running Microsoft Services for Network File System (for example, Microsoft Services for NFS is a component of Windows Storage Server 2003).
- You must install the latest Windows service pack before installing SFU and N1GE then continue to install additional Windows service packs as they become available.

You can find more details concerning SFU requirements at

<<http://www.microsoft.com/windows/sfu/default.asp>>

(<http://<http://www.microsoft.com/windows/sfu/default.asp>>)

Services for UNIX Installation

Microsoft's SFU is required to install N1GE successfully. You can download SFU at:<http://<http://www.microsoft.com/windows/sfu/default.asp>>

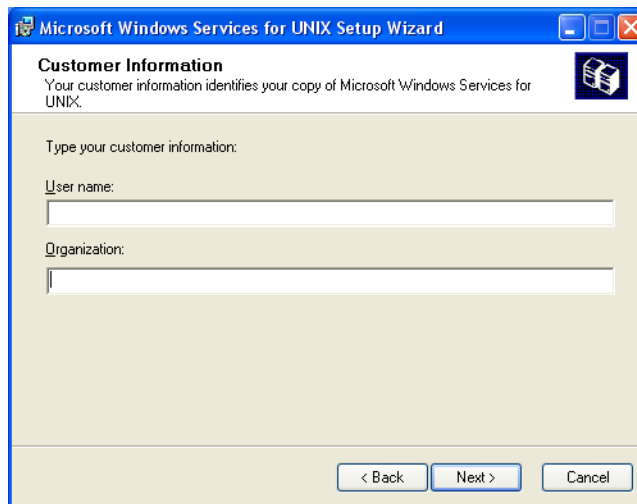
1. Get the SFU distribution media.

If you downloaded SFU, just execute the application to unzip the files into a directory. This directory must be located on a file system that has at least 480 MBytes free space.

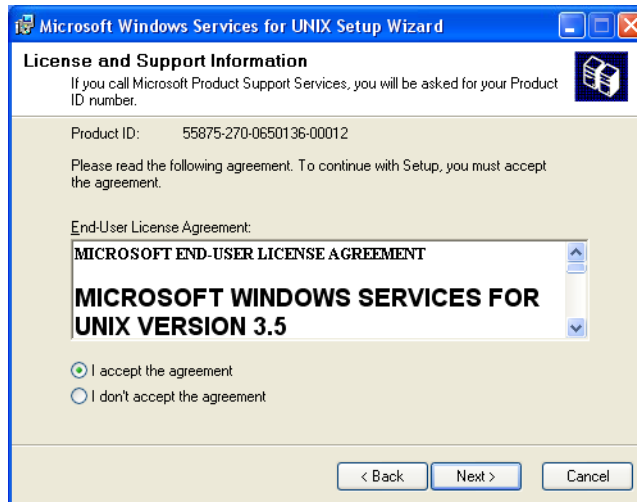
2. Login to the Windows system with the Administrator account.
3. Start the `setup.exe` application which was unpacked previously.



4. Enter your name and organization.



5. Accept the license agreement for SFU.



6. Now you have to choose between the standard installation and custom installation. The standard installation is recommended.



If disk space is limited, you might also choose the custom installation path but make sure that at least following components will be installed:

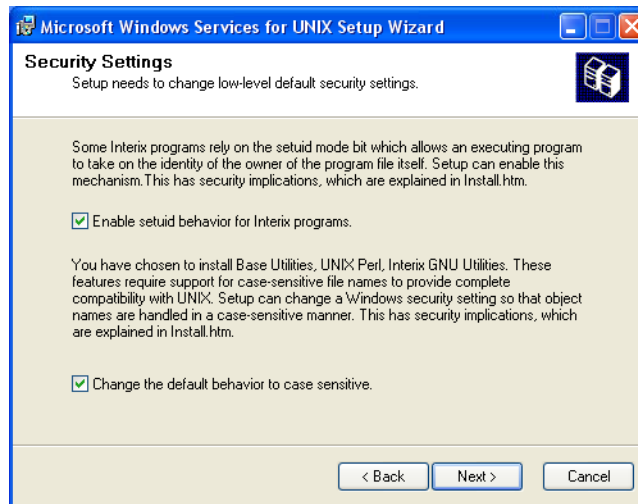
Utilities -> Base Utilities
 Interix Gnu components -> Interix GNU utilities

Remote connectivity components -> Telnet Server and Windows Remote Shell

If you intend to use NFS shared file systems then you also need:

Authentication tools for NFS -> User Mapping and Server for NFS Authentication.

7. Depending on the underlying Windows operating system you might be asked two questions concerning the SFU security settings. The following screen shows the recommended selections:



The following information is a basic description concerning these two options. If you need further information please consult Microsoft's SFU documentation.

Enable suid behavior for Interix programs — According to the POSIX standard, a file has permissions that include bits to set both a UID (`setuid`) and a GID (`setgid`) when the file is executed. If either or both bits are set on a file, and a process executes that file, the process gains the UID or GID of the file. When used carefully, this mechanism allows a non-privileged user to execute programs that run with the higher privileges of the file's owner or group. When used incorrectly, however, this behavior can present security risks by allowing nonprivileged users to perform actions that should only be performed by an administrator. For this reason, Windows Services for UNIX Setup does not enable support for this mechanism by default.

You should enable support for `setuid` behavior because N1GE will be running programs that require this support. Even if you do not enable support for `setuid` behavior when installing Windows Services for UNIX, you can enable it later.

Changing Default Behavior to Case Sensitivity — You might be required to choose whether to change the default behavior of object names, such as file names, to being case sensitive. The choice you make will affect system security as well as how Windows Services for UNIX functions. With Microsoft Windows, the names of most objects (such as files and directories) are case preserving, but case insensitive. So, you cannot have two files in the same directory named `sample.txt` and `Sample.txt` because Windows regards the names as identical for the purposes of identifying files. However, the UNIX operating system is fully case sensitive. So, UNIX systems distinguish between object names when the only difference between those names is the case of the objectname characters. Therefore, `sample.txt` and `Sample.txt` could appear in the same directory and the UNIX system would distinguish between them when performing operations on the files. For example, the command `rm S*.txt` would delete `Sample.txt` but not `sample.txt`. In order to implement typical UNIX behavior, the Server for NFS and the Interix subsystem are normally case sensitive when working with file names.

This behavior can present security issues, particularly for users who are accustomed to the caseinsensitive conventions of Windows. For example, a Trojan horse version of `edit.exe` named `EDIT.EXE` could be stored in the same directory as the original. If a user were to type `edit` at a Windows command prompt, the Trojan horse version (`EDIT.EXE`) could be executed instead of the standard version. If case sensitivity is enabled, Windows users should be made aware of this possibility.

With Windows XP(Professional) and the Windows Server 2003 family, the default behavior of subsystems other than the Win32 subsystem is to be case preserving but case insensitive. In previous versions of Windows, such subsystems were fully case sensitive by default. In order to support standard UNIX behavior, Windows Services for UNIX Setup allows you to change the default Windows XP and Windows Server 2003 family behavior for non-Win32 subsystems when installing the base utilities (which installs the Interix subsystem) or Server for NFS. If you enable case sensitivity and then subsequently uninstall Server for NFS and the base utilities, Windows Services for UNIX Setup will restore the default, case-insensitive behavior of non-Win32 subsystems.

8. Configure User Name Mapping

User Name Mapping acts as a single clearinghouse that provides centralized user mapping services for Interix and therefore N1GE. User Name Mapping lets you create maps between Windows and UNIX user and group accounts. In principle, these user and group names may not be identical but for users who intend to use N1GE the names have to be identical.

User Name Mapping lets you maintain a single mapping database for the entire enterprise. This feature makes it easy to configure authentication for multiple computers running Windows Services for UNIX. In addition to one-to-one mapping between Windows and UNIX user and group accounts, User Name Mapping permits one-to-many mapping letting you associate multiple Windows accounts with a single UNIX account. This feature can be useful, for example, when you do not need to maintain separate UNIX accounts for individuals and would

rather use a few accounts to provide different classes of access permission. You can use simple maps, which map Windows and UNIX accounts with identical names. You can also create advanced maps to associate Windows and UNIX accounts with different names, which you can use in conjunction with simple maps.

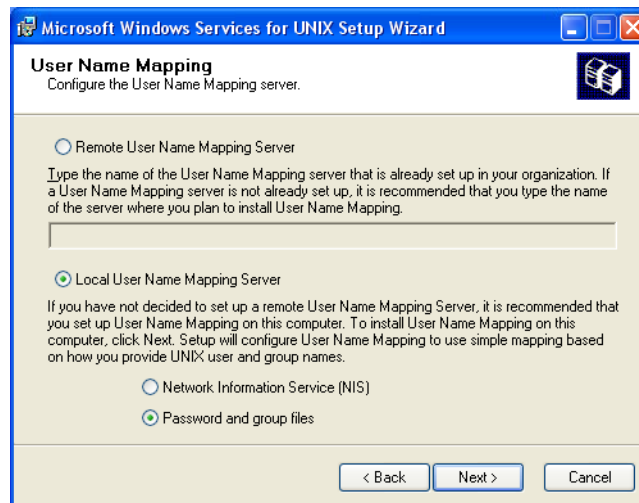
For information about simple and advanced maps, see "Simple and advanced maps" in "Help for Services for UNIX"

Note – Note: After the installation has finished, you can find "Help for Services for UNIX" here:

Start -> Programs -> Services for UNIX -> Help for Services for UNIX

User Name Mapping can obtain UNIX user, password, and group information from one or more Network Information Service (NIS) servers or from password and group files located on a local hard drive. The password and group files can be copied from a UNIX host or from a Windows-based system running Server for PCNFS.

Note – User Mapping is part of SFU and not of N1GE. Please consult Microsoft Documentation and/or support to setup user mapping correctly.

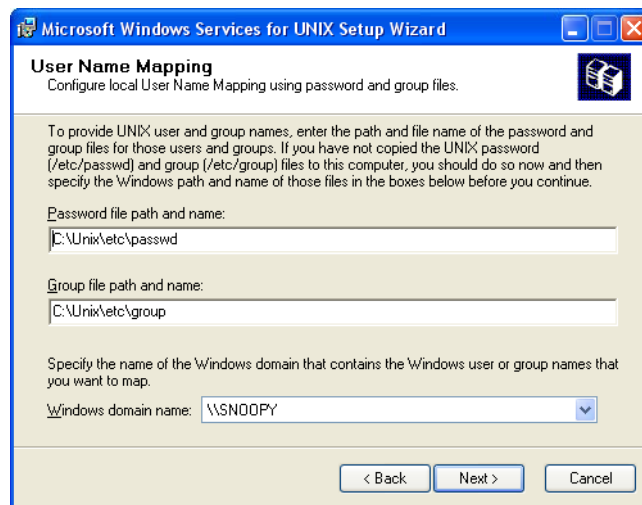


Your selection in this dialog depends on the hosts and services which are currently provided in your Windows environment and also in the UNIX environment. Otherwise, if there is no such server in your environment then you should select Local User Name Mapping Server.

Note – You should install SFU and enable the User Name Mapping service on your host which acts as Domain Controller for your windows environment. All other hosts should contact that Remote User Name Mapping Server.

If you choose Local User Name Mapping Server then you might either select Network Information Services (NIS) to access your passwd and group NIS-maps. Otherwise you have to select I if you will provide the files yourself.

9. Depending on your previous selections, you have either to enter the NIS Domain name and NIS Server name or the path of the passwd and group files.



Following, you will find an example for the files which have the standard UNIX format. This means that you can also use your /etc/passwd and /etc/group files from your UNIX environment.

C:\Unix\etc\passwd

```
root:x:0:0:UNIX root user:/home/root:/bin/tcsh
user1:x:1002:100:Full name of user1:/home/user1:/bin/tcsh
```

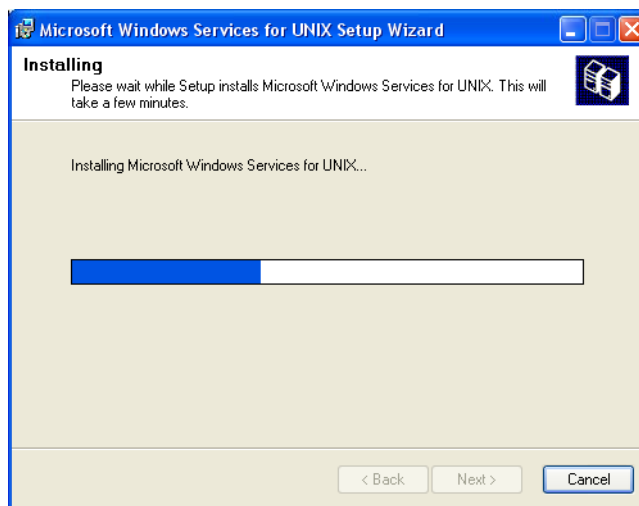
C:\Unix\etc\group

```
root::0:
```

Note – Some NIS maps do not contain an entry for user root. If this is the case and you intend to create following mapping, Administrator <-> root.

You create this entry by using the following steps:

- a. First create a password file containing the root entry during this installation step.
- b. If the SFU installation is finished then start the Services for UNIX Administration application and create the mapping: Administrator <-> root.
- c. Switch to NIS mapping.
- d. Use simple mapping or add manual mappings.
- e. At this point the installation starts installing components. Wait until all components are installed.



10. When the installation process finishes, you may have to reboot the machine, depending on the version of Windows you are using.



11. Make sure that the Interix Subsystem Startup is started during boot time. If you intend to use NFS shares and user mapping then also start Client for NFS and User Name Mapping

Depending on the installation options and version of the Windows operating system, one or more of these services are disabled by default.

Post SFU Installation Tasks

There are several tasks you should do after you install the SFU software.

1. Before you start using SFU and before you actually install N1GE, please check that user mapping is working correctly by following these steps.
 - a. Open a Interix shell.
 - b. Use the `su` command to switch to a known user.
 - c. Verify the access permissions of NFS shares which should be accessible by that user.
 - d. Try to access these network resources. If a user cannot access a Network drive, most likely the User Name Mapping is not working correctly.
2. Check users home directories. To enable the automounting of the users home directories use this series of menus:

Control Panel -> Administrative Tools -> Computer Management -> Users -> Properties -> Profile

click on connect to, select a drive letter, and enter the path of the users home directory in UNC notation: \\<server>\<share>\<user home>

Within the Interix subsystem, you might access all NFS shares through the special directory: `/net/<server>/<share>`

You might also create links to these directories to access the shares directly (for example, `ln -s /net/myserver/export/share00/home /home`).

3. Enable Administrator names on your machines.

Make sure that the Administrator accounts on all machines which should be enabled as executions hosts for N1GE use the same account name (e.g. Administrator).

Also make sure that this user has manager privileges in your N1GE cluster. If this is not the case then before the installation of the execution daemon, please add the privileges using this command: `qconf -am <Administrator>`

4. Set the CLI commands which start an editor. Make sure to set the EDITOR environment variable to `vi` or your preferred UNIX editor within the Interix subsystem before you start using UNIX commands.

Troubleshooting SFU

The following section describes some common problems that users may encounter when installing and using N1GE in a Services for UNIX environment on a Windows system.

- Impossible connect to the Interix subsystem via `telnet` or `rsh`

Make sure that the correct services are started. The corresponding Windows services have to be disabled. The Interix versions of `telnetd` and `rshd` have to be started. You can do this task by removing the pound sign (#) from the following lines part of `/etc/inetd.conf`

```
#telnet stream tcp nowait NULL /usr/sbin/in.telnetd in.telnetd -i
#shell stream tcp nowait NULL /usr/sbin/in.rshd in.rshd -a
```

If it is still not possible to connect to the machine, please check your firewall configuration. Donot block connections to corresponding ports:

Service	Ports
-----+-----	
ftp	20, 21
ssh	22
telnet	23
rsh	514

- The wrong default login shell is started. Why?

`.rhost` and `host.equiv` authentications fails if new users accounts are created and if passwords of existing users are changed. The command `regpwd` has to be called. After that, use the steps to register passwords correctly.

- Why is the access to NFS mounted home directories to slow?
User Name Mapping might be the cause for this problem. If you have a large number of user maps, installing User Name Mapping on a Domain Controller improves performance by reducing network traffic. It is possible to create a User Name Mapping server pool. This method means you can use DNS round-robin to create a pool of computers running User Name Mapping. This will provide improved performance on wide area networks as well as provide fail over when one of the servers is no longer available
- How can I map user `root` if it does not exist in the NIS maps?
First create a `passwd` file which contains an entry for the user `root`. Then, explicitly map the `root` account (no basic mapping) using the created `passwd` file. Finally, change the mapping to use the NIS maps. Note that the previous `root` mapping will persist.
- NIS Server cannot be contacted during the SFU installation
Interrupt the SFU installation and make sure that there is no other service or application running which already configures or uses the NIS server. If this is the case, then disable this service for the time of the SFU installation.
- The Interix Subsystem of SFU and/or the User Mapping is not enabled after reboot
Make sure that following services are automatically started after machine reboot:
`Interix Subsystem Startup`, `User Name Mapping`
- Also if you use NFS mounted directories that also enable the service per default:
`Client for NFS`
- Queues stick in `u-state` for a very long time
After the installation/restart of an execution host the corresponding queues have attached the unknown (`u`) state for a very long. This is normal behavior for Windows machines. After a full load report interval the `u-state` should be gone. If this is not the case, then check that the `sgc_execd` has really been started on the corresponding machine.

Other N1GE Installation Issues

Checking Linux Motif Libraries

On newer Linux systems, the `libXm.so.2` Motif libraries are not always installed resulting in the inability to run the precompiled Linux `qmon` binary.

To correct this problem, use the following steps.

▼ Installing Linux Motif Libraries

Steps 1. Check if the libraries are already present by using this command.

```
% ls -l /usr/X11R6/lib/libXm*
```

If the `/usr/X11R6/lib/libXm.so.2` points to a `libXm.so.2.x` version you are done. Note that a symbolic link to `/usr/X11R6/lib/libXm.so.3` does not work.

If the libraries are not present then continue following these steps.

2. Download the corresponding `openmotif` libraries from http://www.ist.co.uk/DOWNLOADS/motif_download.html or from the SUSE 9.1 distribution (there is an additional `rpm` file called `openmotif21-*` available).

3. Install the missing libraries as root. For Suse 9.1, you install the `openmotif21-*` package like any other package. For packages downloaded from <http://www.ist.co.uk>, install the libraries as in the following example.

```
# rpm -i --prefix /tmp/test --force \  
openmotif-2.1.31-2_IST-JDS2003.i386.rpm  
# cd /tmp/test/OpenMotif-2.1.31/lib
```

```
# cp libXm.so.2.1 /usr/X11R6/lib
# cd /usr/X11R6/lib
# ln -s libXm.so.2.1 libXm.so.2
```

4. Test **qmon**.

```
% ldd `which qmon`
```

Installing N1GE on a System with IPMP

How to install the Grid Engine software on hosts with the Solaris Operating Environment IP Multipathing (IPMP) technology

What is IP Multipathing?

IP Multipathing is a technology that allows grouping of TCP/IP interfaces for fail over and load balancing purposes. If an interface within an IP Multipathing group fails, the interface is disabled and its IP address is relocated to another interface in the group. Outbound IP traffic is distributed across the interfaces of a group. For further details on IP Multipathing, refer to the Solaris Operating Environment documentation, which can be found at: <http://docs.sun.com/db/doc/806-4075/6jd69oabu?a=view>. The IPMP features overview can be found at: <http://www.sun.com/software/solaris/ds/ds-netmultipath/index.html>.

Issues between IPMP and Grid Engine

The only major issue is the error messages which occur when starting the Grid Engine daemons on a machine where the main interface is part of an IPMP group. This situation occurs when the IPMP load balancing distributes the connections across the interfaces in the group; therefore, the IP packets show up at the receiving end as coming from a different host rather than the one associated with the main interface. For example, on a machine with three interfaces named `qfe0`, `qfe1`, and `qfe3`, where the IP addresses for these interfaces are 10.1.1.1, 10.1.1.2 and 10.1.1.3 respectively, IPMP would need an extra address for each interface for testing. However that requirement is ignored in this example. Each of these addresses has a hostname associated with it. The hosts table looks like the following example:

```
10.1.1.1 sge
10.1.1.2 sge-qfe1
10.1.1.3 sge-qfe2
```


The machine's hostname is `sge`. When a connection is established from `sge` to another machine, it might go through `sge`, `sge-qfe1`, or `sge-qfe2`. Upon installation, Grid Engine will only recognize `sge`. When Grid Engine receives a connection request from `sge-qfe2`, it closes the connection because the request is not from one of the authorized (or known) nodes.

You solve this problem by using the `host_aliases` files (see the `sge_h_aliases` man page for details). You can use this file to "tell" Grid Engine that `sge`, `sge1`, and `sge-qfe2` are all from the same machine. The `host_aliases` file in this case would look like this:

```
sge sge-qfe1 sge-qfe2
```

Note that if you make any changes to the `$SGE_ROOT/$SGE_CELL/common/host_aliases` file, you must stop and restart all running Grid Engine daemons (`sge_qmaster`, `sge_scheduler`, `sge_execd`, and `sge_commd`). To do this, login as `root` to all your Grid Engine hosts and enter these commands :

```
/etc/init.d/sgemaster stop
/etc/init.d/sgeexecd stop
    /etc/init.d/sgemaster start
/etc/init.d/sgeexecd start
```

Installing the Grid Engine Master Node With IPMP

There are two ways you can fix this problem: one way is to ignore the error messages during installation. This method is operating system independent (except for MS Windows) The other way is to temporarily disable IPMP on the interface associated with the machine's hostname. This method only works on systems with Solaris 8 or greater Operating Environments.

The ignoring the error messages procedure is as follows in these steps:

1. Run the `inst_sge -m` command while ignoring the error messages during the start up of the daemons.
2. Shutdown the daemons with the `/etc/init.d/sgemaster stop` and `/etc/init.d/sgeexecd stop` commands. Due to the networking errors, some daemons fail to shutdown and must be killed with the `kill -9` command. To see which daemons failed to shutdown use this command: `ps -e | grep sge_`.
3. Install the `host_aliases` file in the `$SGE_ROOT/$SGE_CELL/common` directory.
4. Restart the daemons with the `/etc/init.d/sgemaster start` and `/etc/init.d/sgeexecd start` commands.

The temporary disable method is as follows in these steps:

1. Identify the interface associated with the machine's hostname.

2. Verify that the interface has IPMP enabled with the `ifconfig <<interface>> | grep groupname.` command.
3. Take note of the group name.
4. Disable IPMP with this command: `ifconfig <<interface>> group "" .`
5. Install the Grid Engine master node.
6. Install the `host_aliases` file in the `$SGE_ROOT/$SGE_CELL/common` directory.
7. Restart the daemons with the `/etc/init.d/rcsge start` command.
8. Re-enable IPMP using the following command: `ifconfig <<interface>> group <<IPMP group>>.`

Installing a Grid Engine on an Execution Host With IPMP

Once the `host_aliases` file is installed and the Grid Engine daemons are restarted, you can simply start the execution host installation without further problems.

Enabling Administrative and Submit Hosts with IPMP

You have two choices when enabling these hosts with IPMP:

- Follow the same procedure used for the execution host (updating the `host_aliases` file before installation.)
- Add all the hostnames associated with the administrative or submit host with one of the following commands:

```
qconf -ah <<hostname>> <<alias 1>> <<alias 2>> ...
      (for the administrative host)
```

```
qconf -as <<hostname>> <<alias 1>> <<alias 2>> ...
      (for the submit host)
```

Glossary

administration host	Administration hosts are hosts that have permission to carry out administrative activity for the grid engine system.
access list	A list of users and UNIX groups who are permitted or denied access to a resource such as a queue or a host. Users and groups can belong to multiple access lists, and the same access lists can be used in various contexts.
array job	A job made up of a range of independent identical tasks. Each task is similar to a separate job. Array job tasks differ among themselves only by having unique task identifiers, which are integer numbers.
campus grid	A grid that enables multiple projects or departments within an organization to share computing resources.
cell	A separate cluster with a separate configuration and a separate master machine. Cells can be used to loosely couple separate administrative units.
checkpointing	A procedure that saves the execution status of a job into a <i>checkpoint</i> , thereby allowing the job to be aborted and resumed later without loss of information and already completed work. The process is called <i>migration</i> if the checkpoint is moved to another host before execution resumes.
checkpointing environment	A grid engine system configuration entity that defines events, interfaces, and actions that are associated with a certain method of checkpointing.
cluster	A collection of machines, called hosts, on which grid engine system functions occur.
cluster grid	The simplest form of a grid, consisting of computer <i>hosts</i> working together to provide a single point of access to users in a single project or department.

cluster queue	A container for a class of jobs that are allowed to run concurrently. A queue determines certain job attributes, for example, whether it can be migrated. Throughout its lifetime, a running job is associated with its queue. Association with a queue affects some of the things that can happen to a job. For example, if a queue is suspended, all jobs associated with that queue are also suspended.
complex	A set of resource attribute definitions that can be associated with a queue, a host, or the entire cluster.
department	A list of users and groups who are treated alike in the functional and override scheduling policies of the grid engine system. Users and groups can belong to only one department.
entitlement	The same as <i>share</i> . The amount of resources that are planned to be consumed by a certain job, user, user group, or project.
execution host	Systems that have permission to run grid engine system jobs. These systems host queue instances, and run the execution daemon <code>sgexecd</code> .
functional policy	A policy that assigns specific levels of importance to jobs, users, user groups, and projects. For instance, through the functional policy, a high-priority project and all its jobs can receive a higher resource share than a low-priority project.
global grid	A collection of campus grids that cross organizational boundaries to create very large virtual systems.
grid	A collection of computing resources that perform tasks. Users treat the grid as a <i>single</i> computational resource.
group	A UNIX group.
hard resource requirements	The resources that must be allocated before a job can be started. Contrast with <i>soft resource requirements</i> .
host	A system on which grid engine system functions occur.
job	A request from a user for computational resources from the grid.
batch job	A batch job is a UNIX shell script that can be run without user intervention and does not require access to a terminal.
interactive job	An interactive job is a session started with the commands <code>qssh</code> , <code>qsh</code> , or <code>qlogin</code> , which open an <i>xterm</i> window for user interaction or provide the equivalent of a remote login session.
job class	A set of jobs that are equivalent in some sense and treated similarly. A job class is defined by the identical requirements of the corresponding jobs and by the characteristics of the queues that are suitable for those jobs.

manager	A user who can manipulate all aspects of the grid engine software. The superusers of the master host and of any other machine that is declared to be an administration host have manager privileges. Manager privileges can be assigned to nonroot user accounts as well.
migration	The process of moving a checkpointing job from one host to another before execution of the job resumes.
operator	Users who can perform the same commands as managers except that they cannot change the configuration. Operators are supposed to maintain operation.
override policy	A policy commonly used to override the automated resource entitlement management of the functional and share-based policies. The cluster administrator can modify the automated policy implementation to assign override to jobs, users, user groups, and projects.
owner	Users who can suspend or resume, and disable or enable, the queues they own. Typically, users are owners of the queue instances that reside on their workstations.
parallel environment	A grid engine system configuration that defines the necessary interfaces for the grid engine software to correctly handle parallel jobs.
parallel job	A job that is made up of more than one closely correlated task. Tasks can be distributed across multiple hosts. Parallel jobs usually use communication tools such as shared memory or message passing (MPI, PVM) to synchronize and correlate tasks.
policy	A set of rules and configurations that the administrator can use to define the behavior of the grid engine system. Policies are implemented automatically by the system.
priority	The relative level of importance of a job compared to others.
project	A grid engine system project.
resource	A computational device consumed or occupied by running jobs. Typical examples are memory, CPU, I/O bandwidth, file space, software licenses, and so forth.
master host	The master host is central to the overall cluster activity. It runs the master daemon <code>sge_qmaster</code> and the scheduler daemon <code>sge_schedd</code> . By default, the master host is also an administration host and a submit host.
share	The same as <i>entitlement</i> . The amount of resources that are planned to be consumed by a certain job, user, or project.
share-based policy	A policy that allows definition of the entitlements of user and projects and arbitrary groups thereof in a hierarchical fashion. An enterprise, for instance, can be subdivided into divisions, departments, projects

active in the departments, user groups working on those projects, and users in those user groups. The share-based hierarchy is called a share-tree, and once a share-tree is defined, its entitlement distribution is automatically implemented by the grid engine software.

share-tree	The hierarchical definition of a share-based policy.
soft resource requirements	Resources that a job needs but that do not have to be allocated before a job can be started. Allocated to a job on an as-available basis. Contrast with <i>hard resource requirements</i> .
submit host	Submit hosts allow for submitting and controlling <i>batch jobs only</i> . In particular, a user who is logged in to a submit host can submit jobs using <code>qsub</code> , can control the job status using <code>qstat</code> , and can use the grid engine system OSF/1 Motif graphical user interface <code>QMON</code> .
suspension	The process of holding a running job but keeping it on the execution host (in contrast to checkpointing, where the job is aborted). A suspended job still consumes some resources, such as swap memory or file space.
ticket	A generic unit for resource share definition. The more ticket shares that a job, user, project, or other component has, the more important it is. If a job has twice as many tickets as another job, for example, that job is entitled to twice the resource consumption.
usage	Another term for “resources consumed.” Usage is determined by an administrator-configurable weighted sum of CPU time consumed, memory occupied over time, and amount of I/O performed.
users	People who can submit jobs to the grid and run them if they have a valid login ID on at least one submit host and one execution host.
userset	Either an <i>access list</i> or a <i>department</i> .

Index

A

- abort installation procedure, 29, 48
- access list, 123
- account for installation, 16
- accounting and reporting
 - console
 - install, 102
 - dbWriter
 - enable reporting, 95
- accounting and reporting console, install, 102
- add administrative host, 47, 60
- add submit host, 47
- administration host, 123
- administrative host, 21
 - add, 47, 60
- administrative user, file handling, 16
- array, job, 123
- automounter, 14

B

- batch job, monitoring, 85
- Berkeley DB host, 19-20
- Berkeley DB installation procedure, 47-50

C

- campus grid, 123
- cell, 11, 14, 16, 123
- checkpointing, 123
- checkpointing environment, 123

- classic spooling, 19
- cluster, 123
- cluster grid, 123
- complex, 124

D

- database
 - for accounting and reporting, 91
 - Oracle, 94
 - PostgreSQL, 91, 94
- database host, 19-20
- database spooling host, 19-20
- date, 84
- dbWriter
 - for accounting and reporting
 - enable reporting, 95
 - install, 95
 - set environment variables, 95
- department, 124
- directory organization, 14-16
- disk space requirements, 13-14

E

- entitlement, 124
- environment
 - checkpointing, 123
 - parallel, 125
- /etc/services, 12, 17
- execution host, 20, 124

execution host (Continued)
 installation procedure, 42
execution host spool directory, 18

F

file access permission, 16-17
file handling, administrative user, 16
functional policy, 124

G

GEMM, 25
global grid, 124
grid, 124
 campus, 123
 cluster, 123
 global, 124
Grid Engine Management Module, 25
group, 124

H

hard resource requirements, 124
host, 124
 administration, 123
 Berkeley DB, 19-20
 execution, 124
 master, 125
 shadow master, 18
 submit, 126

I

id, equivalent user, 11
installation
 with root account, 16
 with unprivileged account, 16
installation account, 16
installation directory, 14
installation procedure
 abort, 29, 48
 Berkeley DB, 47-50
 Berkeley DB spooling server, 47-50

installation procedure (Continued)
 execution host, 42
 master, 28
 spooling server, 48
interactive job, 124

J

job, 124
 batch, 124
 class, 124
 monitoring, 85
 parallel, 125
job array, 123
job class, 124
job_id, 85

M

manager, 125
master, as execution host, 61
master host, 17-18, 125
master installation procedure, 28
migration, 125

N

network services, 17
NIS, 12, 17, 84

O

operator, 125
Oracle database, accounting and reporting, 94
override policy, 125
owner, 125

P

parallel environment, 125
parallel job, 125
permission, file access, 16-17
policy, 125

- policy (Continued)
 - functional, 124
 - override, 125
 - share-based, 125
- PostgreSQL database
 - accounting and reporting, 91, 94
 - create database, 94
 - create database owner, 94
 - create user, 94
- priority, 125
- project, 125

Q

- qconf -ah, 47
- qconf -ah, 60
- qconf -as, 47
- qmaster spool directory, 18
- qstat, monitor batch jobs, 85
- queue, 21, 124

R

- redirection
 - stderr, 85
 - stdout, 85
- requirements
 - hard, 124
 - soft, 126
- resource, 125
- resource requirements
 - hard, 124
 - soft, 126
- root account, 16
- root directory, 14
- rsh, 84

S

- schedd spool directory, 18
- scheduler, 21-22
 - profile, 21-22
 - high, 22
 - max, 22
 - normal, 22

- services, 12, 84
- services database, 17
- settings.csh, 83
- settings.sh, 83
- sge_execd, 42
- SGE_EXECD_PORT, 83
- sge_qmaster, 28
- SGE_QMASTER_PORT, 83
- sge_schedd, 28
- shadow master host, 18
- shadow_masters file, 18
- share, 125
- share-based policy, 125
- share-tree, 126
- soft resource requirements, 126
- spool directories, 18-19
- spooling, classic, 19
- spooling server, installation procedure, 48
- stderr redirection, 85
- stdout redirection, 85
- submit host, 21, 126
 - add, 47
- Sun Web Console
 - for accounting and reporting
 - install, 101
- suspension, 126
- system requirements
 - disk space, 13-14

T

- ticket, 126

U

- unprivileged account, 16
- usage, 126
- user, 126
- user id, equivalent, 11
- user names, 16
- userset, 126

