



**Console Guide**

**Version 4.2**

# Table of Contents

---

<b>Preface</b>	<b>3</b>
Who Should Use This Guide	3
How This Guide is Organized	3
Document Feedback	3
Document Conventions Used in This Guide	4
 <b>Logging in to PointBase™ Console</b>	 <b>5</b>
 <b>Using PointBase™ Console</b>	 <b>7</b>
Working With the Windows	8
The Input window	9
The Output window	9
The Status window	9
Back and Forth arrows	9
 <b>Working With the Toolbar</b>	 <b>10</b>
File Menu	10
Edit Menu	14
SQL Menu	14
DBA Menu	15
Catalog Menu	16
Result Menu	18
Window Menu	19
Help Menu	19

# Preface



Thank you for using PointBase Console, a Graphical User Interface (GUI) tool designed to help administer your PointBase Relational Database Management System (RDBMS). This guide contains instructions for using PointBase Console.

## Who Should Use This Guide

This guide is intended for developers, application programmers, and administrators. This guide assumes that you:

- Understand terminology such as RDBMS, Java, SQL and classes.
- Understand the fundamentals of a relational database system and how tables and indexes are created.
- Have a basic knowledge of the SQL language.
- Are familiar with your operating system

## How This Guide is Organized

This guide provides information necessary to first start the PointBase Console and continues to explain how to use it. Additionally, this guide explains PointBase Console's toolbar and window options and menus.

## Document Feedback

Please send comments or suggestions for all PointBase Documentation to the following email address.

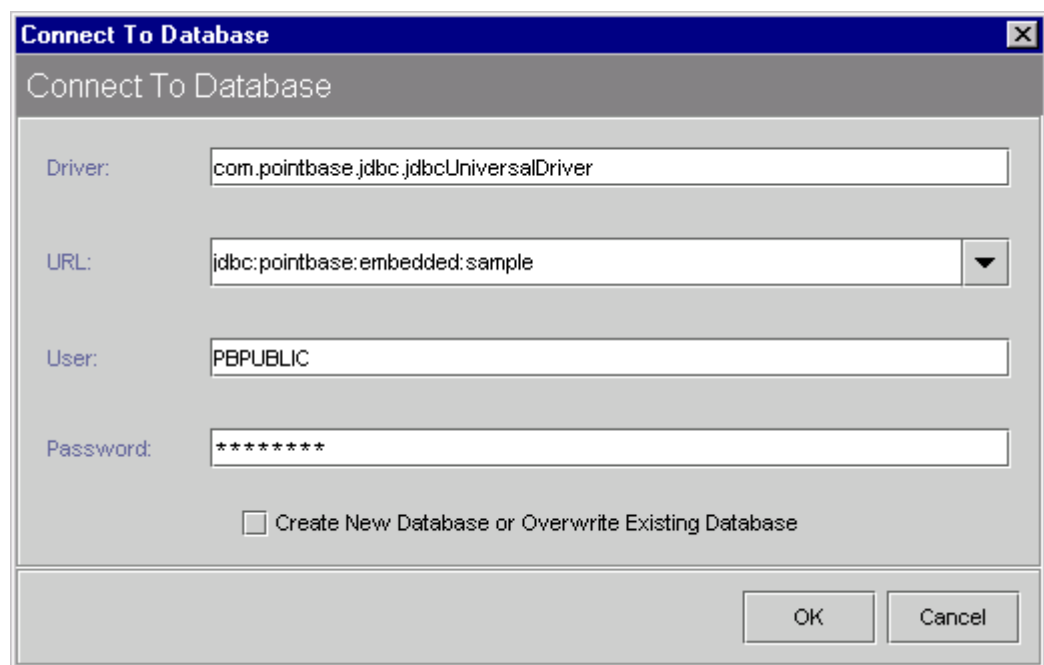
[docfeedback@pointbase.com](mailto:docfeedback@pointbase.com)

## Document Conventions Used in This Guide

Convention	Identifies	Examples
ALL UPPERCASE LETTERS	<ul style="list-style-type: none"> <li>Environment variables</li> <li>Database table names</li> <li>SQL Keywords</li> </ul>	<ul style="list-style-type: none"> <li>PATH</li> <li>S_LST_OF_VAL</li> <li>CREATE TABLE</li> </ul>
Courier New font	<ul style="list-style-type: none"> <li>Directory, file, folder, and path names</li> <li>Code</li> <li>Data you need to type</li> </ul>	<ul style="list-style-type: none"> <li>c:\pointbase\img.bmp</li> <li>Set PointBase =</li> <li>Type Your Company Name Here</li> </ul>
Initial Uppercase Letters	PointBase names, objects, properties, windows, screens, dialog boxes, menus, buttons, tabs, applets, fields, and icons	PointBase Embedded, Business Component object, List Editor window, Main menu, and Cancel button
<i>Italics</i>	<ul style="list-style-type: none"> <li>Book titles</li> <li>Cross references in an index or glossary</li> <li>Variables</li> <li>Arguments to statements of functions</li> <li>First appearance of a new word or phrase</li> <li>Emphasis</li> </ul>	<ul style="list-style-type: none"> <li><i>User's Guide</i></li> <li><i>see also</i> or <i>see</i></li> <li><i>APPSRV_4X_ROOT</i></li> <li><i>variable, rate, prompt\$</i></li> <li><i>new word</i> or <i>phrase</i></li> <li>Do not do this <i>before</i> you do that.</li> </ul>
[ ]	Optional italicized arguments or characters inside angle brackets	[ <i>caption</i> \$]
{   }	Choice from listed arguments; use OR operator ( ) to separate	{Goto <i>label</i>   Resume Next   Goto 0}

# Logging in to PointBase™ Console

Once the PointBase Console is started, the following window appears.



When you log in for the first time into PointBase Console, the default properties are picked up as follows:

- Driver: com.pointbase.jdbc.jdbcUniversalDriver.
- URL: “jdbc:pointbase:embedded:sample” is the default URL for PointBase Embedded used with the universal JDBC driver, with *sample* the default PointBase database. Select the default or enter another database URL:
  - To connect to PointBase Server, use “jdbc:pointbase:server://<machine\_name><:port>/sample” and make sure that the server is up and running.
  - To connect to PointBase Embedded, use “jdbc:pointbase:embedded:sample”.

---

**NOTE:** PointBase Version 4.0 and later supports URLs from versions 3.5 and earlier.

- User: the default is PBPUBLIC, but you may enter an alphanumeric user name or the equivalent in another language, for example, a word in Japanese characters. Note that it is NOT case-sensitive.
- Password: the default is PBPUBLIC, but you may enter an alphanumeric password associated with the user name or the equivalent in another language, for example, a word in Japanese characters. Note that it is NOT case-sensitive.

---

**NOTE:** The next time you log in, defaults are picked up from the properties file created by PointBase Console while exiting. The new defaults will be the driver and the URL which was last used.

# Using PointBase™ Console

---

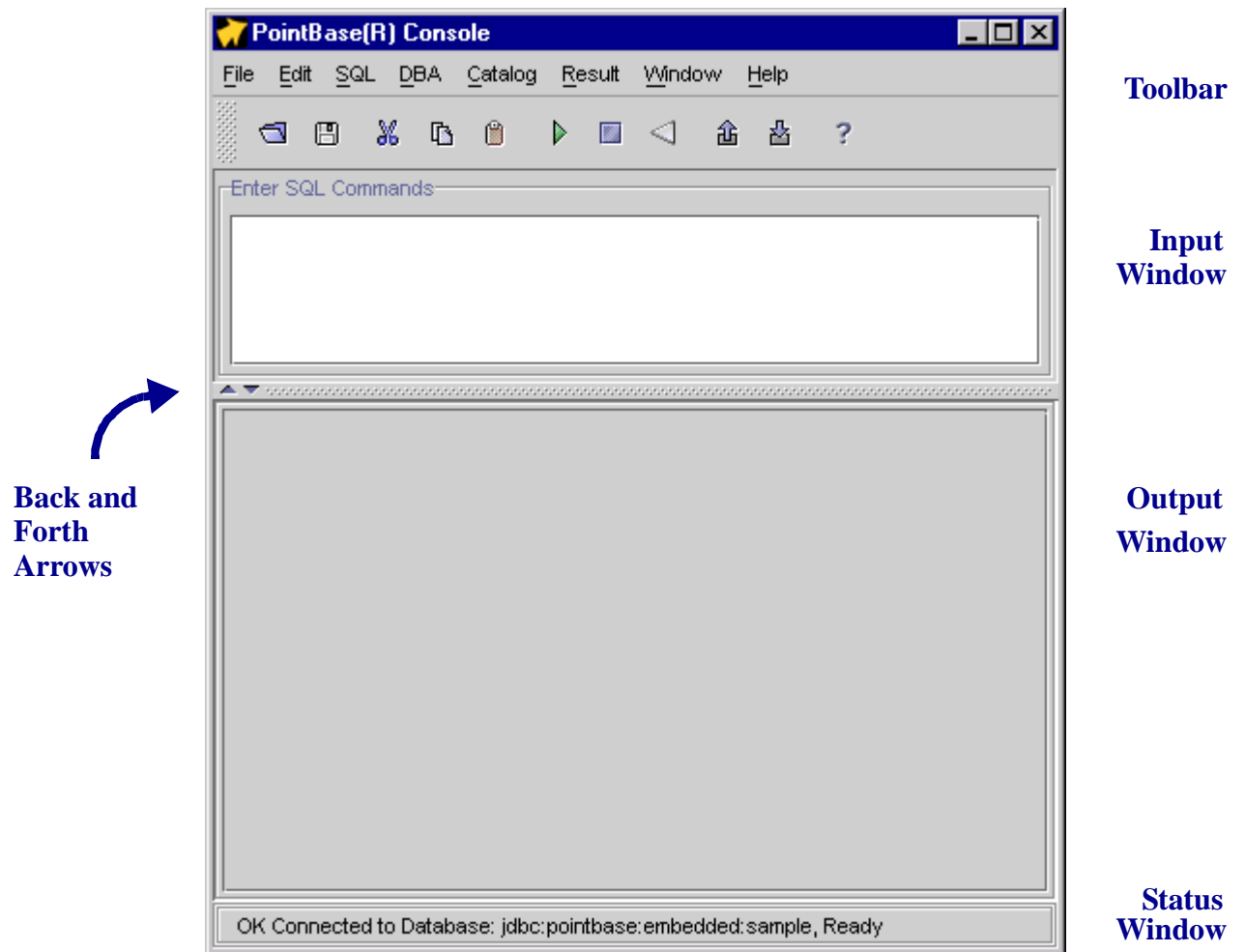
PointBase Console tool is a graphical application tool. With PointBase Console, you can administer your data, as well as the following:

- Create new databases.
- Execute, debug, and display the results of SQL commands.
- Create text filters from databases.
- Show the results of SELECT statements graphically.

---

**NOTE:** This application uses Sun's JFC/swingall package. If it is not already in your CLASSPATH, you need to add the file `swingall.jar`. You can download the latest version from Sun's web site at <http://www.javasoft.com>.

## Working With the Windows



The Interactive PointBase SQL Interface is the first window you see when you start PointBase Console. It is divided into four separate sections or windows:

- The Toolbar (See [“Working With the Toolbar”](#) ).
- The Input window
- The Output window
- The Status window

The windows inside the PointBase Console window allow you to enter SQL statements and view the results or status of your application. The SQL statements may be run sequentially or at will. Each window is described in the following sections.



## The Input window

You can enter SQL commands in any form, with line feeds to aid readability. The input font is non-proportionally spaced to ensure that tabs align vertically.

If you wish to save the current SQL statements displayed in the SQL Input window, select, then copy the text and paste it in a Notepad-type computer application. You may select and copy the results, and you may paste them into an Excel file or into a flat file as tab separated data.

## The Output window

This window displays the output of an SQL command and its content cannot be edited. When displaying the output of a SELECT statement, the results tabulate using ordinary characters and spaces for padding. Sorting has been added on the columns: after executing a statement, press the header of the result column and you may sort on Number, String, and Date.

## The Status window

This window shows the status of the last executed command. For example, if the last command was UPDATE, the window shows the number of rows affected.

## Back and Forth arrows

Between windows, you can use small back and forth arrows, to make your current window the main window by occupying the whole screen, or to revert to their original size and position. You can also modify the size of each window by dragging it to one side, or up and down.

# Working With the Toolbar



The toolbar at the top of the PointBase Console window contains the following options that you can use when working in PointBase Console. They are described in detail, in the following sections:

- ["File Menu" on page 10](#)
- ["Edit Menu" on page 14](#)
- ["SQL Menu" on page 14](#)
- ["DBA Menu" on page 15](#)
- ["Catalog Menu" on page 16](#)
- ["Result Menu" on page 18](#)
- ["Window Menu" on page 19](#)
- ["Help Menu" on page 19](#)

## File Menu

The following table describes the menu items or buttons that you can use with the File menu.

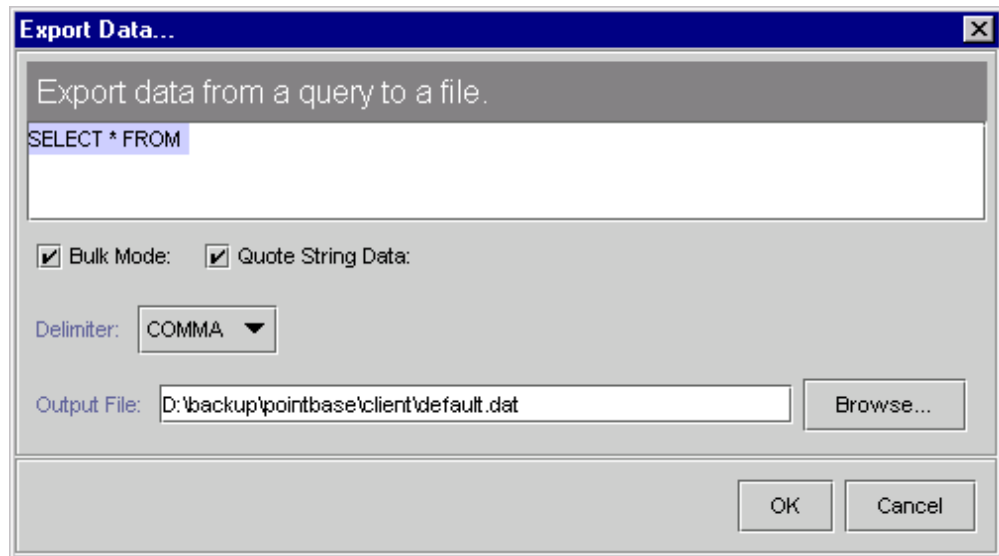
<i><b>Menu Option</b></i>	<i><b>Description</b></i>
Open	Open a file.
Save	Save the current SQL script.
Save As	Save the current SQL script under a different name or path.
Export <a href="#">See "Export" on page 11.</a>	Send the content of a query to a file.
Import <a href="#">See "Import" on page 11.</a>	Import data from an external source.
Print Output	Send a file to another location.
Exit	Terminate the application.

## Export

Sends the content of a query to a file of your choice.

The transfer of data is faster when selecting Bulk Mode. Select Quote String Data if your data contains spaces. Choices of delimiters are: comma, space, tab, and bar. A delimiter is a character or string that you use to separate or mark the start and end of each value in the data.

In “Output File,” type the name of the file receiving the data, or use Browse to select it from the list.



## Import

Retrieves data from a file, database, or URL. You can use HTTP, FTP, or JDBC protocols for file imports.

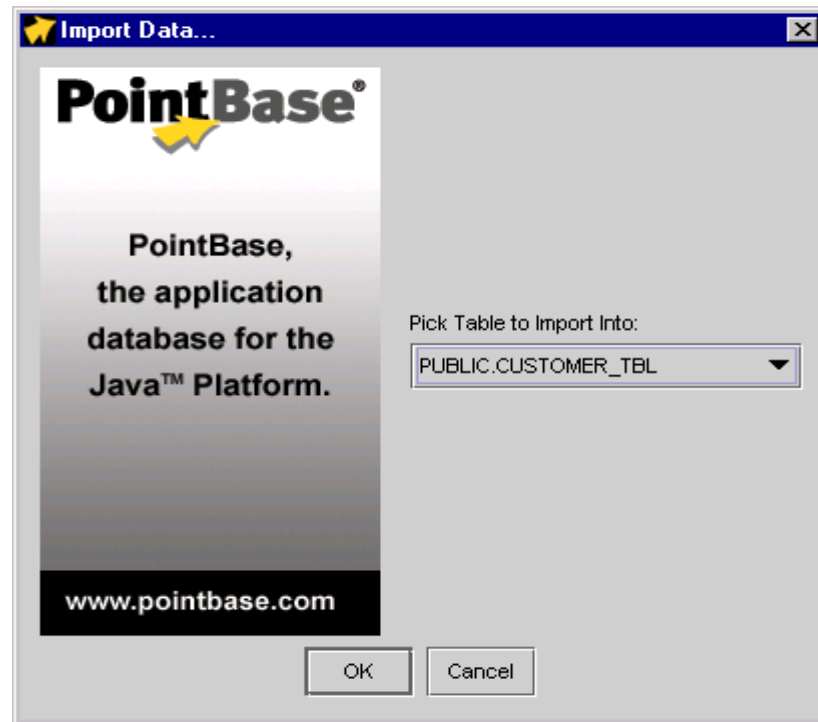
- Screen 1: Choose a table into which you are importing.
- Screen 2: Select Quote String Data if your data contains spaces. Choices of delimiters are: comma, space, tab, SQL, and bar
- Click Ok to end the Import command.

---

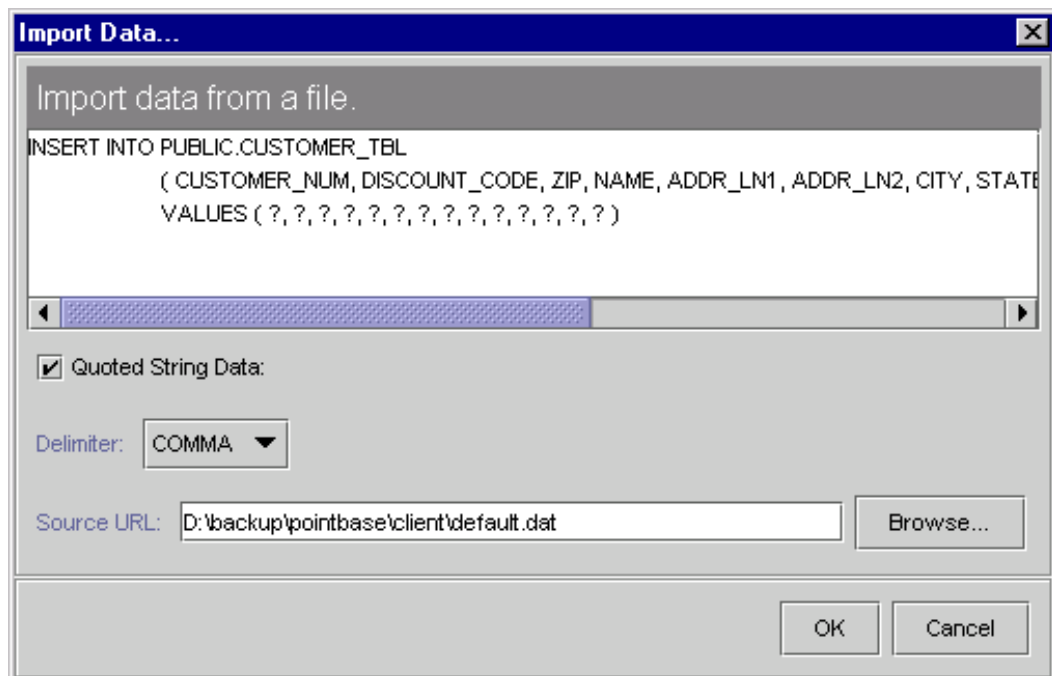
**NOTE:** If you selected SQL in the “Delimiter” box (screen 2) type the name of the file receiving the data in the Source URL field or use Browse to select it from the list. *See [Logging in to PointBase™ Console](#) for information on using URLs.*

Click Ok to display the Import SQL Statement window.

Screen 1



Screen 2



## Import From Database Window

You can update the driver information to include HTTP, FTP, or JDBC. For example, you could enter:

- For PointBase Embedded

```
jdbc:pointbase:embedded:sample
```

- For PointBase Server (where *linux* is the host and *sample* is the database name)

```
jdbc:pointbase:server://linux/sample
```

**NOTE:** When EMBEDDED is used as the host\_name, this indicates a reserved keyword used by PointBase. This will start an embedded server on the default port or on the port specified.

You can also enter a SQL query to filter the data you want to import. For example, you could enter the following to select data from a table called T1.

```
select * from T1
```

If you do not specify a query, the system imports all the data from the database.

**Import from Database...**

Enter the SQL statement that acts as the import ...

Source Database Driver:  
com.pointbase.jdbc.jdbcUniversalDriver

Source Database User:  
PUBLIC

Source Database Password:  
\*\*\*\*\*

Query:  
SELECT \* FROM

OK Cancel

## Edit Menu

This menu contains typical Windows Edit options:

<b>Menu Option</b>	<b>Description</b>
Undo	Replaces the latest value with its previous content.
Redo	Replaces the current value with the previous value entered.
Cut	Removes a selected area of text and copies it to clipboard.
Copy	Duplicates a selected area of text. The text selected goes into a temporary file, such as NotePad, while waiting to be copied.
Paste	Applies the text copied to the cursor location.
Select All	Highlights all text in the window. You can also use a cut or copy command.

## SQL Menu

The following table describes the menu items or buttons that you can use with the SQL menu.

<b>Menu Option</b>	<b>Description</b>
Execute	Execute the SQL statement to the left of, or at the location of the cursor in the Input window.  For example, if you type an SQL statement in the Input window, the cursor positions itself at the end of what you have just typed. The PointBase Console tool locates the command and runs it. You can also use the mouse to place the cursor anywhere within a command.
Execute All	Executes every command in the Input window from the cursor location.  This command aborts if there are SQL errors. Long scripts may be executed by clicking ExecuteAll from the SQL menu. Make sure each statement is separated by a semicolon (;).
Commit	Make the current transaction permanent in the database
Rollback	Roll back (undo) all work performed since the beginning of the current transaction, which will either be the point of the last commit or the establishment of the database connection.
Timing Mode	Set the time intervals for automatic commits and reports the execution time of SQL queries.
Optimizer Analysis Mode	This mode is similar to a plan-only mode and reports optimizer analysis of a query for performance tuning purposes.

<b>Menu Option</b>	<b>Description</b>
Auto Commit	<p>Makes the current transaction permanent in the database at regular time intervals.</p> <hr/> <p><b>NOTE:</b> Make sure that auto commit is turned off when performing the savepoint statement. Refer to the “SQL Reference” section of the <i>PointBase Developer’s Guide</i> for more information.</p>
Select * from <table_name>  E.g.) Select * from SYSTABLES	<p>These SQL statements let you select the name of the table that needs processing.</p> <p>Displays all items from the selected system tables.</p>

## DBA Menu

The following table describes the menu items or buttons that you can use with the DBA menu.

<b>Menu Option</b>	<b>Description</b>
Create Role	Creates a new Role. Enter a role name of alphanumeric characters or the equivalent in another language, for example, a word in Japanese characters. A wizard has been added to help you create SQL roles. The wizard is self-explanatory, but if you need more details about creating roles refer to the <i>PointBase Developer’s Guide</i> in the SQL Reference section.
Create Table	Creates a new table. Enter a table name of alphanumeric characters or the equivalent in another language, for example, a word in Japanese characters. Note that you can also use the Catalog function to create a table. A wizard has been added to help you create tables. You may start the wizard by going to the DBA menu and clicking Create Table. The wizard is self-explanatory. However, additional information may be found in the <i>PointBase Developer’s Guide</i> in the SQL Reference section.
Create Routine	Creates a new routine. Enter a routine name of alphanumeric characters or the equivalent in another language, for example, a word in Japanese characters. A wizard has been added to help you create SQL routines (procedures and functions). You may start the wizard by going to the DBA menu and clicking Create Routine. The wizard is self-explanatory, but if you need more details about creating routines refer to the <i>PointBase Developer’s Guide</i> in the SQL Reference section.

<b>Menu Option</b>	<b>Description</b>
Create Index	Creates a new index. Enter an index name of alphanumeric characters or the equivalent in other languages, for example, Japanese characters.
Create User	Creates a new user. Enter a user name of alphanumeric characters or the equivalent in other languages, for example, Japanese characters.
Create Schema	Creates a new schema. Enter a schema name of alphanumeric characters or the equivalent in another language, for example, a word in Japanese characters. Note that you can also use the Catalog function to create a schema.
Create New Database	Creates a new database. Enter a database name of alphanumeric characters or the equivalent in another language, for example, a word in Japanese characters.
Database Properties	Updates various database properties. These settings are saved in the “pointbase.ini” file. See <i>PointBase System Guide</i> for details about database properties and the “pointbase.ini” file.
Unload Database As	This procedure takes all the tables in the database and creates an SQL script that can be executed to recreate the database to exactly the same point. All tables and indexes unload to the file. It also allows unloading of tables that contain either BLOB or CLOB data. The result is an ASCII file that can be edited and loaded using standard dynamic SQL INSERT statements.
Connect to Database	This allows you to connect to a different database. The current connection is first closed. Note that every connection defaults to <u>Autocommit ON</u> . If you disconnect from one database and connect to another, the current work is not committed unless you execute a commit command.
Disconnect from Database	This allows you to disconnect from the current database.

## Catalog Menu

The following table describes menu items or buttons that you can use with the Catalog menu.

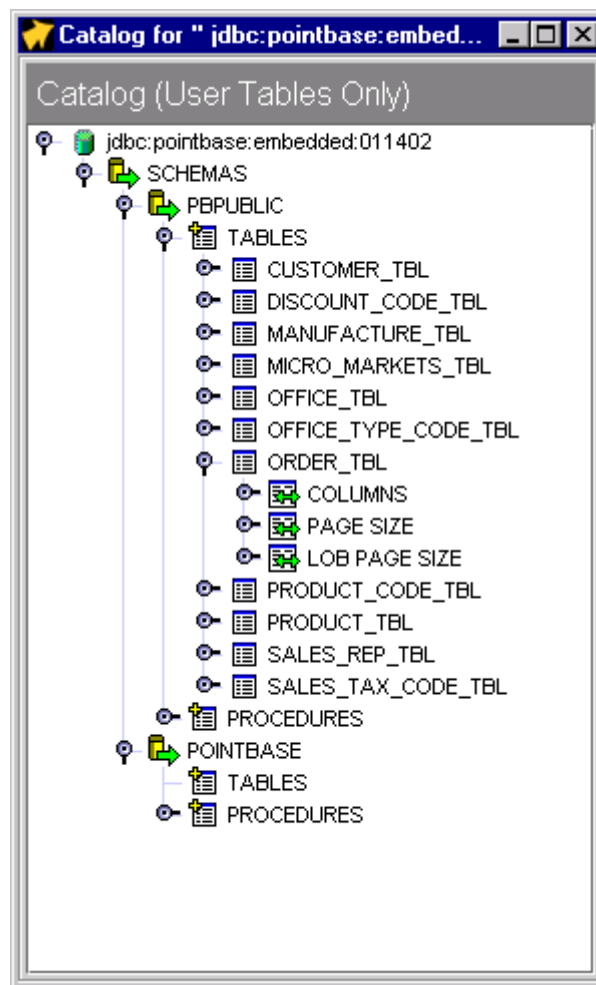
<b>Menu Option</b>	<b>Description</b>
Catalog  <a href="#">See “Catalog” on page 17.</a>	Displays the database catalog as a tree hierarchy



<b>Menu Option</b>	<b>Description</b>
Refresh	Displays the latest database catalog as a tree hierarchy Forces the catalog to rebuild its representation.
Only User Tabs  <a href="#">See “Only User Tables” on page 18.</a>	Displays user tables only

## Catalog

Shows the database catalog as a tree hierarchy in its own window. You can access each object and expand the contents to the next level, from database through schemas to columns. The following screen shows an example of a Catalog window.



## Only User Tables

Retrieves only the user tables and displays the tables as a tree hierarchy.

You can access each object and expand the contents to the next level. Clicking on the high-level object gives you additional functionality. For example, while selecting Schemas, right-click on a specific schema (for example PBPUBLIC) to create a new table, or drop the current schema.

- Catalogs: select, then right-click the high-level Catalog item to refresh all catalogs or create a new schema.
- Schemas: double-click to view all existing schemas, or select, then right-click on a specific schema to create a new table, or drop the current schema (if you have the proper authority to do so.)
- Tables: select, then right-click the table to view its components, such as columns and page sizes. Once you double-click on a specific table, you can right-click to add an index, a new table, select \* from the table, count rows in the table, or drop the table itself.
- Procedures: double-click to view all existing procedures.

Double-click on each item component to display additional detailed information about its architecture and setup.

## Result Menu

The following table describes menu items or buttons that you can use with the Result menu. Use this menu to select and copy text from the Output window. You can either select a few lines using your mouse, or choose “Select All” from this menu. Paste the copied text by using CTRL-V at the appropriate point of insertion.

<b><i>Menu Options</i></b>	<b><i>Description</i></b>
Copy	Copies the selected text.
Select All	Selects all the results in the Output window.

## Window Menu

The following table describes menu items or buttons that you can use with the Window menu.

<b>Menu Options</b>	<b>Description</b>
Clear Input	Clears all text from the Input window.
Clear Output	Clear all text from the Output window, including the status message text.
Tool Bar	Toggle between displaying or hiding the Tool Bar.
(Platform-specific Options)  Metal CDE/Motif Windows	These options let you change the look and feel of the window based on Java 1.2 Swingall look and feel.

## Help Menu

The following table describes menu items or buttons that you can use with the Help menu. The Help menu allows you to view two different types of help files.

<b>Menu Options</b>	<b>Description</b>
Help Topics	Displays information to help you navigate through the interface.
About PointBase ® Console	Displays the current version of PointBase Console.

**This concludes the *PointBase Console Guide*. For more information about PointBase databases refer to the *PointBase System Guide* that was included with your PointBase documentation set.**