



Y 2000 Ready ?

## A. Y2000 READY ?

Product	Releases	Fixpak	Year 2000 readiness	Information
OS/2	2.11 and earlier	--	NO	A1
OS/2	Warp 3.0	XR_W032	YES	A2
OS/2	Warp 3.0 Connect	XR_W032	YES	A3
OS/2	Warp 4.0	XR_M004 US	YES	A4
TCP/IP for OS/2	V2.0	Y2000 Updates	YES	A5
TCP/IP for OS/2	V3.0	Y2000 Updates	YES	A6
TCP/IP for OS/2	V3.1	Y2000 Updates	YES	A7
TCP/IP for OS/2	V3.5	Y2000 Updates	YES	A8
TCP/IP for OS/2	V4.0	Y2000 Updates	YES	A9
IBM Peer, OS/2 Lan Requestor and UPM for OS/2 Warp 3 Connect	--	IP_8402	YES	A10
IBM Peer, OS/2 Lan Requestor and UPM for OS/2 Warp 4	--	IP_8196	YES	A11
CM/2	< 1.11	--	NO	--
CM/2	1.11	--	YES	A12
DB/2	< 2.1.0	--	NO	A13
DB/2	2.1.0 and later	--	YES	A13
AML	2.40	2.40E	YES	A14
DAS	1.3	--	YES	A15
DCAF Remote Controll	1.34	--	YES	A16
Kopy Kat Remote Controll	V1.21	--	YES	A17
PC BIOS / PC HARDWARE	--	--	YES	A18

23.08.99	ADIC / GRAU SERVICE CD	Page 3
326S00004	CD 4 / 1999	

OPERATING SYSTEMS (A1-A4)

- A1 OS/2 2.11 and earlier
- A2 OS/2 Warp Version 3
- A3 OS/2 Warp Connect Version 3
- A4 OS/2 Warp 4

IBM TCP/IP FOR OS/2 (A5-A9)

- A5 TCP/IP V2.0
- A6 TCP/IP V3.0
- A7 TCP/IP V3.1
- A8 TCP/IP V3.5
- A9 TCP/IP V4.0

IBM PEER, OS/2 LAN REQUESTER AND UPM (A10-A11)

- A10 IBM Peer Version 1.0 for OS/2 Warp Connect OS/2 Lan Requester and UPM
- A11 IBM Peer for OS/2 Version 4.0 OS/2 Lan Requestor and UPM

IBM COMMUNICATIONS MANAGER/2

- A12 Communications Manager/2 Version 1.1

IBM DATABASE 2

- A13 Database 2 for OS/2 (DB/2)

AML MANAGEMENT SOFTWARE

- A14 AML Software

DISTRIBUTED AML SERVER

- A15 DAS Software

REMOTE CONTROL

- A16 DCAF
- A17 Kopy Kat

PC BIOS

- A18 PC BIOS / PC HARDWARE

23.08.99	ADIC / GRAU SERVICE CD	Page 4
326S00004	CD 4 / 1999	

## B. FIXES AND INSTALLATION

- B1 Installation Process for OS/2 Warp 3.0 Fixpack XR\_W039
- B2 Installation Process for OS/2 Warp 4.0 Fixpack XR\_M009
- B3 Installation Process for TCPIP Updates
  - B3.1.1 TCP/IP V2.0 Y2000 Update
  - B3.2.1 TCP/IP V3.0 Y2000 Update
  - B3.3.1 TCP/IP V3.1 Y2000 Update
  - B3.4.1 TCP/IP V3.5 Y2000 Update
  - B3.5.1 TCP/IP V4.0 Y2000 Update
  - B3.6.1 TCP/IP V4.1 Y2000 Update
  - B3.7.1 Installation Process for TCP/IP Public FixPak UN00959 for V3.0
- B4 Communications Manager CM/2
  - B4.1.1 Installation Process for CM/2 Refresh (CM/2 1.11)
  - B4.1.2 APAR FOR CM/2 Version 1.11
- B5 MPTS
  - B5.1.1 Installation Process for MPTS ServicePak/Refresh WR08421 and WR08610
- B6 Installation Process for DB/2 Fixpack
  - B6.1.1 WR08120 (DB/2 V2)
  - B6.1.2 WR08190 (DB/2 V2)
  - B6.2.1 WR09073 (UDB V5 Fixpack 6)
  - B6.2.2 WR09083 (UDB V5 Fixpack 7)
- B7 AMU / DAS Software
  - B7.1 AMU
  - B7.2 DAS
  - B7.3 AMUSAVE
- B8 Installation Process for graphics driver
  - B8.1.1 Elsa Winner 1000T2D V1.22
  - B8.2.1 OS/2 DEVICE DRIVER FOR THE S3 Trio32/Trio64/64+/V2 CHIP SETS
  - B8.3.1 Maxtor Produktiva
- B9 Installation Process for OS2 IDE Drivers Update
- B10 BIOS Y2K Testprogram
  - B10.1.1 IBM
  - B10.2.1 NSTL
  - B10.3.1 SNI
- B11 ABBA/2, ABBA/E, ABBA/J Codes
  - \ABBASYS\ABBA?\.....
  - B11.1.1 ABBA/2 2.20H
  - B11.2.1 ABBA/2 2.30G
  - B11.3.1 ABBA/E 2.20M
  - B11.4.1 ABBB/E 2.30G
- B12 REMOTE CONTROLL SOFTWARE
  - B12.1.1 KopyKat Patch – Upgrade from 1.1x to 1.21
  - B12.2.1 Version 1.30 (UB00000) to Version 1.33 (UB09900)
  - B12.2.2 Version 1.31 (UB09800) or higher to Version 1.34 (UB09950)

## C. PROBLEMS AND SOLUTION

- C1 Problems with or after the Installation from OS/2 Warp 3.0 Fixpack XR\_W039 / XR\_M009
  - 1. Unable to open archive directory

23.08.99	ADIC / GRAU SERVICE CD	Page 5
326S00004	CD 4 / 1999	

- C2 Problems with graphics adapter  
1. ELSA WINNER 1000T2D

## D. UPDATES

- D1 Get information about Y2000 Updates and Y2000 News

## E. CHANGES ON ADIC / GRAU SERVICE CD

- E1 Changes on SERVICE CD 2 / 1999
- AMU Software 2.40G added  
→ B7
  - BIOS Y2K Testprograms  
→ B10
  - ABBA/2 Software 2.30G (+fix1,fix2) added  
→ x:\abbasys\abba2\230g\
  - ABBA/2 Software 2.20H (+fix1,fix2,fix3) added  
→ x:\abbasys\abba2\220h\
  - ABBA/E Software 2.30G (+fix1,fix2) added  
→ x:\abbasys\abbae\230g\
  - ABBA/E Software 2.20M added  
→ x:\abbasys\abbae\220m\
  - Amusave V1.80 added  
→ B7.2.1 x:\amu\amusave\1.80\
  - Fixpack 6 for UDB V5 added  
→ B6.2.1 WR09073 (UDB V5 Fixpack 6)
  - Fixpack 7 for UDB V5 added  
→ B6.2.2 WR09083 (UDB V5 Fixpack 7)
  - BIOS Update for ASUS P2B Boards added  
→ \AMU-PC\ASUS\P2B\BX2I1008\
  - KopyKat Patch – Upgrade from 1.1x to 1.21 added  
→ B12.1.1
  - Y2K Fix for TCPIP 3.0 for OS/2 was changed by IBM  
→ B3.2.1 changed
  - DCAF Update to Version 1.33 added  
→ B12.2.1
  - DCAF Update to Y2K Ready Version 1.34 added  
→ B12.2.2
  - ABBA/J Software 4.02 added  
→ x:\abbasys\abbaj\4.02
  - Serviceinfo (1 – 50 ) added  
→ x:\servinfo\servinfo.htm (Overview)  
→ x:\servinfo\servinfo\\*.pdf (Serviceinfos)
  -
- E2 Changes on SERVICE CD 3 /1999
- Y2K Fix for TCPIP 4.0 for OS/2 was changed by IBM  
New Y2K Fix added  
→ B3.5.1
  - Amusave V1.90 , V1.93 added  
→ B7.2.1 x:\amu\amusave\1.90\ or \1.93\
  - AMU Software 2.40H added  
→ B7 x:\amu\240h\
  - ABBA/J Software 4.03 added  
→ x:\abbasys\abbaj\4.03
  - Serviceinfo ( 51,52,53 ) added  
→ x:\servinfo\servi\_D and servi\_E (Overview)  
→ x:\servinfo\servinfo\\*.pdf (Serviceinfos)
  - Matrox Graphics adapter Installation for Grau Controller added  
→ x:\os2\drivers\matrox\matrox.cmd
  - BIOS Update for SNI Board 819 added (ttDS)  
→ \AMU-PC\SNI\819\
  - B3.6.1 TCP/IP V4.1 Y2000 Update added

23.08.99	ADIC / GRAU SERVICE CD	Page 6
326S00004	CD 4 / 1999	

- MPTS ServicePak/Refresh WR08610 removed
- ABBA/2 Software 2.20H ( fix4 ) added  
→ x:\abbasys\abba2\220h\fix4\
- ABBA/E Software 2.20M ( fix1) added  
→ x:\abbasys\abbae\220m\fix4\
- BIOS Update for Artist-PC (ASUS-Boards) added  
→ x:\amu-pc\artist\...
- AML/S Software 2.23 added  
→ x:\abbasys\amls\2.23\
- AML/S SCSI Software 1.2 and 2.0 added  
→ x:\abbasys\amls\scsi\1.2 and 2.0\
- Installationprogram from OS/2 3.00 FP 39 modified
- MPTS Service Pak/Refresh WR08421 added
- Latest stack Fix for TCP/IP 4.00 added  
→ x:\tcpip\v40\_os2\latest\stack\121698\
- AMU 3.02 added
- DAS 3.01 added

E3 Changes on SERVICE CD 4 /1999

- MPTS ServicePak/Refresh WR08610 and new installation program added.
- NT 4.0 ACI for DAS 3.01 added
- DLT Software added
- AMU FIX 3.02A, 3.02B and 3.02C added
- AMU 2.40I added
- AMUSAVE 2.00 added
- PCOM AFA5019 and AFA5029 added
- AMU 3.02C added
- ABBA/2 Software 2.30G (Fix3) added  
→ x:\abbasys\abba2\230g\fix3\
-

## A. Y2000 READY ?

### OPERATING SYSTEM (A1-A4)

TYPE INTO THE OS/2 WINDOW "VER/R" OR "VER"

#### A1. OS/2 2.11 and earlier

--> NOT Y2000 Ready

Output: The Operating System/2 Version is 2.xx

#### A2. OS/2 Warp Version 3

--> Y2000 Ready with Fixpac XR\_W032 or higher

Output: The Operating System/2 Version is 3.00

Revision 8.256

If there is a earlier revision see B1

Revision	Fixpack
8.255	31
8.256	32
8.257	33
8.258	34
8.259	35
8.260	36
8.261	37
8.262	38

#### A3. OS/2 Warp Connect Version 3

--> Y2000 Ready with Fixpac XR\_W032 or higher

Output: The Operating System/2 Version is 3.00

Revision 8.256

If there is a earlier revision see B1

Revision	Fixpack
8.255	31
8.256	32
8.257	33
8.258	34
8.259	35
8.260	36
8.261	37
8.262	38

#### 4. OS/2 Warp 4

--> Y2000 Ready with Fixpac XR\_M004 or higher

Output: The Operating System/2 Version is 4.00

Revision 9.028

If there is a earlier revision see B2

Revision	Fixpack
9.025	1
9.026	2
9.027	3
9.028	4
9.029	5
9.030	6
9.031	7
9.032	8
9.033	9

23.08.99	ADIC / GRAU SERVICE CD	Page 8
326S00004	CD 4 / 1999	

TCP/IP (A5-A9)  
TYPE INTO THE OS/2 WINDOW "SYSLEVEL"

Output: c:\tcpip\bin\syslevel.tcp  
IBM TCPIP VERSION ?? for OS/2  
Version ??? Component ID xxxxxxxxx  
Current CSD level: xxxxxxx  
Prior CSD level: xxxxxxx

Installation for the different versions: see B3.

IBM PEER, OS/2 LAN REQUESTER AND UPM (A10-A11)

A10 IBM Peer Version 1.0 for OS/2 Warp Connect  
OS/2 Lan Requester and UPM  
Is not in use, so the Year 2000 fixpak IP08196  
will not be supported

A11 IBM Peer for OS/2 Version 4.0  
OS/2 Lan Requestor and UPM  
Is not in use, so the Year 2000 fixpak IP08402  
will not be supported

IBM COMMUNICATIONS MANAGER/2 (A12)  
TYPE INTO THE OS/2 WINDOW "SYSLEVEL"

A12 Communications Manager/2 Version 1.11  
Output: c:\cmlib\syslevel.acs  
IBM Communications Manager/2 - OS/2 Warp  
Version 1.11 Component ID 562207800  
Current CSD level: WR06150  
Prior CSD level: WR00000

If there is an older version installed see B4.1.1



23.08.99	ADIC / GRAU SERVICE CD	Page 9
326S00004	CD 4 / 1999	

## IBM DATABASE 2 (A13)

A13 Database 2 for OS/2 (DB/2)

Type into the OS/2 Window "syslevel"

1. For DB/2 V1.2

Output: c:\sqllib\syslevel.sqc  
 IBM DB2/2 (Single-User)  
 Version 1.2 Component ID 562204401  
 Current CSD level: WRU7000  
 Prior CSD level: WRU7000

This version isn't Y2000 Ready  
 A new installation from DB/2 is necessary.

2. For DB/2 V2

Output: c:\sqllib\syslevel.sqc  
 IBM DB2 for OS/2 Single-User  
 Version 2.1.0 Component ID 56225930  
 Current CSD level: WR08000  
 Prior CSD level: WR08000

The least Current CSD level for the Y2000 is WR08000

WR08000 → DB/2 Release 2.1.0  
 WR08080 → DB/2 Release 2.1.1  
 WR08120 → DB/2 Release 2.1.2  
 > WR08120 → Fixpacks are installed

3. For DB/2 V5

Output: c:\sqllib\syslevel.sqc  
 IBM DB2 Universal Database Personal Edition  
 Version 5.00 Component ID 5639C0200  
 Current CSD level: WR09000  
 Prior CSD level: WR09000

This level is Y2000 Ready

## AML MANAGEMENT SOFTWARE

A14 AML Software

In the upper left corner you can see the version  
 The least version for the Y2000 is 2.40E  
 Check "System Hard and Software" from AMU Releasenotes  
 which are located in the AMU directory on this CD

## DISTRIBUTED AML SERVER

A15 DAS Software

The least version for the Y2000 is 1.3

23.08.99	ADIC / GRAU SERVICE CD	Page 10
326S00004	CD 4 / 1999	

## REMOTE CONTROL

A16 DCAF  
Type into the OS/2 Window "syslevel"

Output: c:\dcaf13\syslevel.eqn  
Distributed Console Access Facility  
Version 1.34 Component ID 562221200  
Current CSD level: UB09950  
Prior CSD level: UB09800

The least version for the Y2000 is 1.34

Following updates ar possible  
→ B12.2.1 Version 1.30 (UB00000) to Version 1.33 (UB09900)  
→ B12.2.2 Version 1.31 (UB09800) or higher to Version 1.34 (UB09950)

If an older Version is installed a new installation of DCAF 1.3 or higher and an update to Version 1.34 is necessary.

A17 KopyKat  
V1.21 or higher → Year 2000 Ready  
Look in the actice KAT Window under <Help> <Product Information>

If an older version is installed  
→ B12.1.1 KopyKat Patch – Upgrade from 1.1x to 1.21

## PC BIOS

A18 PC Bios / PC Hardware  
The description is in the document Y2K\_HW located on this CD.

How to create a DOS bootable diskette

- Insert a diskette on the floppy drive
- Call from your DOS PC bootpartition  
format a: /s
- if a is your floppy drive

or

- Insert a diskette on the floppy drive
- Format this diskette  
format a:
- Call from your DOS PC bootpartition  
sys a:

23.08.99	ADIC / GRAU SERVICE CD	Page 11
326S00004	CD 4 / 1999	

## FIXES AND INSTALLATION

### B1. INSTALLATION PROCESS FOR OS/2 WARP 3.0 FIXPACK XR\_W039

1. Before installation
  - 1.1 Run CHKDSK with Parameter F
2. Installation from Diskettes
  - 2.1 Create CSF Disks
  - 2.2 Create Fixpac XR\_W039 Diskettes
  - 2.3 Install from booted OS/2 partition
  - 2.4 Saving specially files
  - 2.5 Pop-up Information
  - 2.6 Installation
3. Installation from CD-ROM
  - 3.1 Installation
4. More information

#### 1. BEFORE INSTALLATION

##### 1.1 RUN CHKDSK

Before installing any FixPak, run CHKDSK /F against all drives on your system to correct any file system errors that might be present. You cannot do this while OS/2 is active. You must shut down and run CHKDSK by one of the following methods:

- Method 1: Boot from your Installation and DISK 1 diskettes you used to install OS/2 with. If your file system is HPFS, then put the diskette with CHKDSK and UHPFS.DLL on it in your A: drive before issuing the CHKDSK command.
- Method 2: Boot from the Utilities disk you created via the "Create Utility Diskettes" icon in the System Setup folder.
- Open the Folder OS/2 System
  - Open the Folder System Setup
  - Select the Icon Create Utility Diskettes
- Utility Disk 1 is the OS/2 Installation Disk  
Utility Disk 2 is the OS/2 Disk 1  
Utility Disk 3 is the OS/2 Disk 2
- Method 3: Boot from a different OS/2 partition.
- Method 4: Boot from your Installation and DISK 1 diskettes you used to install OS/2 with. If the Welcome Sreen is displayed select F3=Command Prompt Insert the OS/2 Installation CD, change to the os2image\disk\_2 directory and start chkdsk /f from there to the drive which have to be checked.

#### 2. INSTALL FROM DISKETTES

- Make sure that there is enough free memory on the harddisk. (100 MByte),

23.08.99	ADIC / GRAU SERVICE CD	Page 12
326S00004	CD 4 / 1999	

if not, change to the directory c:\amu\logs-trc\ and delete some old logfiles.

## 2.1 CREATE CSF DISKETTES

For example: E is the drive, tools the subdirectory, where the file loaddisk.exe is.  
E is the drive csf is the subdirectory, where the imagefiles are, csfbus1 is the file, from where you create the floppy.

```
E:\tools\loaddisk E:\csf\csfbus1.dsk A: /f/y/q
E:\tools\loaddisk E:\csf\csfbus2.dsk A: /f/y/q
```

## 2.2 CREATE FIXPAC XR\_W039 DISKETTES

```
E:\tools\loaddisk E:\OS2\XR_W039\XR_W039A.dsk A: /f/y/q
There are Files from A to T (XR_W039A to XR_W039T)
```

## 2.3 INSTALL FROM BOOTED OS/2 PARTITION

This method allows you to select the products (partitions) to be serviced.  
This is the method you should use if you have more than one OS/2 partition and want to control which one is serviced.

## 2.4 SAVE FOLLOWING FILES TO A SUBDIRECTORY OR TO A FLOPPY, because this two files are faulty for our configuration

```
c:\os2\boot\ibm1s506.add
c:\os2\install\bootdisk\ibm1s506.add
--> Harddiskdriver
```

The driver who is delivered with the fixpac does not support only one harddisk

```
c:\os2\install\dspinstl.exe
--> Program for Displaydriverinstallation
There are problems to install another graphics adapter
```

Copy this 2 Files after the installation from the fixpac back.

## 2.5 IF YOU GET A POPUP DURING THE INSTALLATION STATING THAT A

newer file exists on your harddisk and it is one of the following files, select the "CANCEL" button so you DO NOT replace the newer file with the older one.

- AUTODRV2.SYS
- IBM2SS01.SYS
- PCM2ATA.ADD
- IBM1S506.ADD
- DSPINSTL.EXE

## 2.6 INSTALLATION

Open an OS/2 Window and rename the file startup.cmd to amu.cmd  
Reboot the system

1. Insert CSF DISK Diskette 1 in drive A.

23.08.99	ADIC / GRAU SERVICE CD	Page 13
326S00004	CD 4 / 1999	

2. Open an OS/2 window or full-screen session.
3. Type A:\SERVICE and press the Enter key.

Note: You could also use the "Drives" object for A: and double click on the "SERVICE.EXE" Icon to start the install.

If the "Product Information" Windows for Corrective Service Facility appears press the OK button

4. Follow the displayed instructions. When prompted to insert Corrective Service Diskette 1 (not CSF DISK Diskette 1), place FixPak XR\_W039 Corrective Service Diskette 1 in drive A. Repeat for the rest of the FixPak disks when requested to do so.

Note: It can take a considerable length of time for the Corrective Service Facility to scan your hard disk for serviceable files. In some cases, it has taken as long as 40 minutes. Please be patient and allow this process to complete.

You get a list of Serviceable products  
Select (black marked) what should be updated

Example:

IBM OS/2 Base Operating system -- SYSLEVEL -- c:\os2\...

Attention: It is possible to update two harddisks

Select only products on the C Drive

Press the Service Button

5. If this is the first OS/2 Warp FixPak you have applied to this system, then enter the path to the ARCHIVE directory where a copy of replaced files will be stored (for example, C:\ARCHIVE).

Note: This ARCHIVE directory is not related to the ARCHIVES directory built into OS/2 Warp 3.0. Please specify a different path. You must specify a different ARCHIVE directory for each product to be serviced.

If this is not the first OS/2 Warp FixPak, then enter the path to the BACKUP directory where a copy of replaced files will be stored (for example, C:\beforefix35).

Note: You must specify a different BACKUP directory for each product to be serviced.

For either case, make sure there is sufficient space available on the drive you specify. Even though these files are kept in compressed (PACK2) format, they require between 7 and 12 MB of disk space.

Click on "OK".

6. If you get a message  
" Error opening or creating archive file "  
in the window Corrective Service Facility Message  
--> C1 1. Unable to open archive directory
7. You will see an "Application in use" dialog box showing a list of locked files that cannot be serviced while the system is running. You are given two choices  
- to Continue or Reboot. Select Continue.

23.08.99	ADIC / GRAU SERVICE CD	Page 14
326S00004	CD 4 / 1999	

8. During the installation process you might see messages about Archiving, Updating and Deferring service.
  - Archiving saves a compressed copy of the original file in the ARCHIVE or BACKUP path you specified.
  - Updating means the original files are replaced with the new ones from this FixPak.
  - Deferring service means the file to be updated is currently in use by the system and cannot be updated. The new files from the FixPak are placed in unpacked format in the \IBMCSFLK\FIX directory on the drive with the most free space. They are processed by the locked file device driver during reboot after you shut down the system.
9. Select NO for a redisplay of the "Product List" after the first part of the FixPak application process has completed if this message is displayed.
10. Click Cancel and Exit to close the Corrective Service Facility window if necessary.
11. Shut down and reboot your system.

You will see the following during reboot of the system if you applied service to the OS/2 partition you were booted from.

The locked file driver is loaded.

Processing locked files

Processing complete

The system will do one automatic reboot after the Locked File Device Driver has completed.

Reboot

12. Rename the file amu.cmd back to startup.cmd and reboot

### 3. INSTALL FROM CD

- Make sure that there is enough free memory on the harddisk. (100 MByte), if not, change to the directory c:\amu\logs-trc\ and delete some old logfiles.

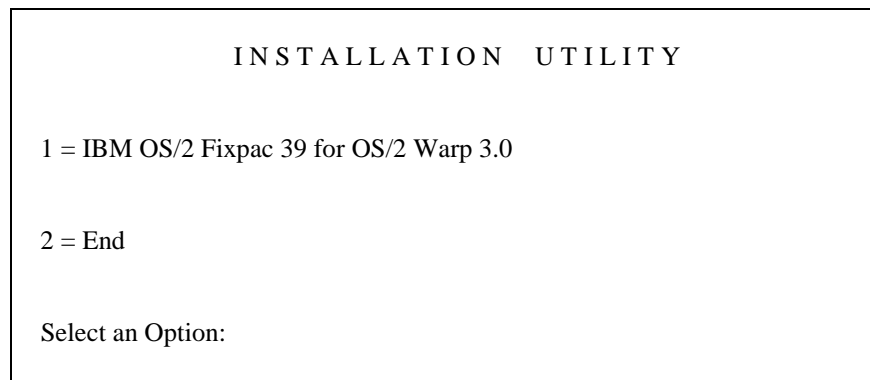
#### 3.1 INSTALLATION

Open an OS/2 Window and rename the file startup.cmd to amu.cmd

Reboot the system

Open an OS/2 window and change to CD ROM drive to x:\os2\xr\_w039\  
where x is the CD ROM Drive

Type install and press the Enter key.



Select Option 2 to start the Fixpac Installation or Option 2 to end



Press OK



Note: It can take a considerable length of time for the Corrective Service Facility to scan your hard disk for serviceable files. In some cases, it has taken as long as 40 minutes. Please be patient and allow this process to complete.



You get a list of Serviceable products  
 Select (black marked) what should be updated  
 Example:  
 IBM OS/2 Base Operating system -- SYSLEVEL -- c:\os2\...  
 Attention: It is possible to update two harddisks  
 Select only products on the C Drive

Press the Service Button





If this is the first OS/2 Warp FixPak you have applied to this system, then enter the path to the ARCHIVE directory where a copy of replaced files will be stored (for example, C:\ARCHIVE).

Note: This ARCHIVE directory is not related to the ARCHIVES directory built into OS/2 Warp 3.0. Please specify a different path. You must specify a different ARCHIVE directory for each product to be serviced.

If this is not the first OS/2 Warp FixPak, then enter the path to the BACKUP directory where a copy of replaced files will be stored (for example, C:\before39).

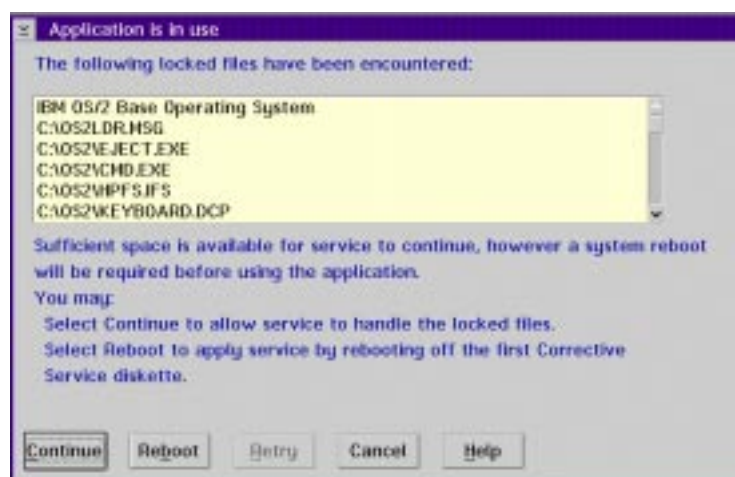
Note: You must specify a different BACKUP directory for each product to be serviced.

For either case, make sure there is sufficient space available on the drive you specify. Even though these files are kept in compressed (PACK2) format, they require between 7 and 12 MB of disk space.

Click on "OK".

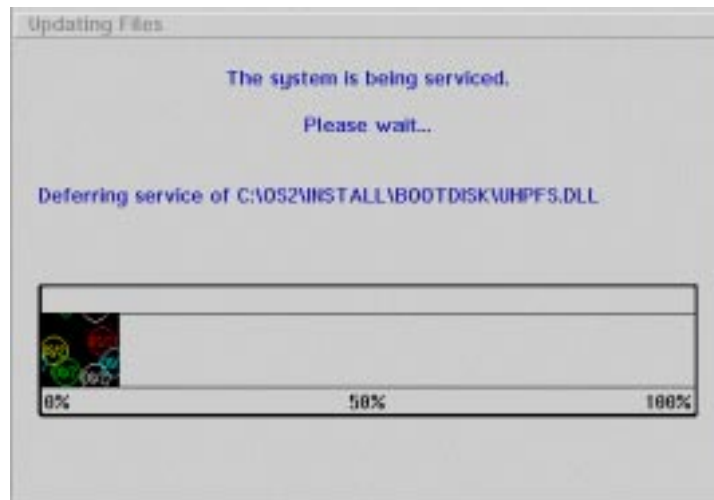
If you get a message

" Error opening or creating archive file "  
 in the window Corrective Service Facility Message  
 --> C1 1. Unable to open archive directory



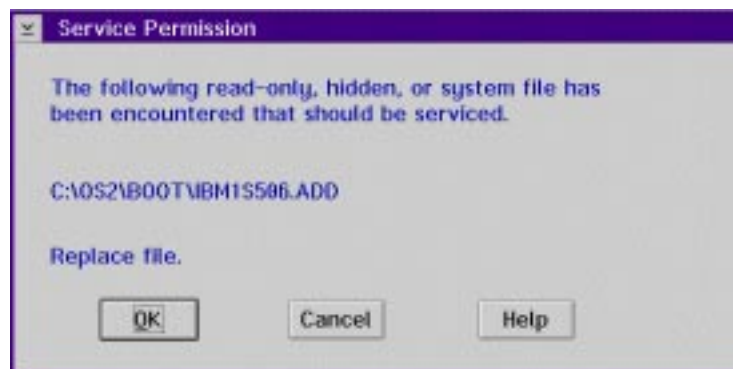
You will see an "Application in use" dialog box showing a list of locked files that cannot be serviced while the system is running.

Select Continue.



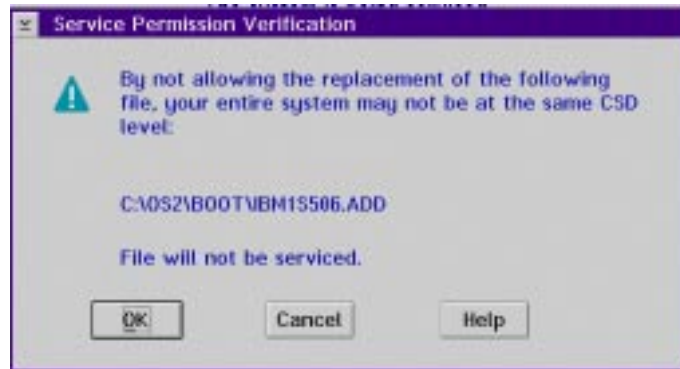
During the installation process you might see messages about Archiving, Updating and Deferring service.

- Archiving saves a compressed copy of the original file in the ARCHIVE or BACKUP path you specified.
- Updating means the original files are replaced with the new ones from this FixPak.
- Deferring service means the file to be updated is currently in use by the system and cannot be updated. The new files from the FixPak are placed in unpacked format in the IBMCSFLK\FIX directory on the drive with the most free space. They are processed by the locked file device driver during reboot after you shut down the system.



If it is one of the following files, select the "CANCEL" button so you DO NOT replace the newer file with the older one.

- AUTODRV2.SYS
- IBM2SS01.SYS
- PCM2ATA.ADD
- DSPINSTL.EXE
- IBM1S506.ADD
- IBMATAPI.FLT
- IBMIDECD.FLT
- IBMDASD.DDP
- OS2DASD.DMD



Press OK  
 You get this window only if you have pressed CANCEL the window before.



Click Cancel and Exit to close the Corrective Service Facility window if necessary.

Shut down and reboot your system.

You will see the following during reboot of the system if you applied service to the OS/2 partition you were booted from.

The locked file driver is loaded.

Processing locked files

Processing complete

The system will do one automatic reboot after the Locked File Device Driver has completed.

Reboot

Rename the file amu.cmd back to startup.cmd

Reboot

#### 4. MORE INFORMATION

If you need more information about this fixpac please read the original IBM documentation in the file X:\OS2\XR\_W039\XR\_W039.DOC

23.08.99	ADIC / GRAU SERVICE CD	Page 20
326S00004	CD 4 / 1999	

## B2. INSTALLATION PROCESS FOR OS/2 WARP 4.0 FIXPACK XR\_M009

1. Before installation
  - 1.1 Run CHKDSK with Parameter F
2. Installation from Diskettes
  - 2.1 Create CSF Disks
  - 2.2 Create Fixpac XR\_M009 Diskettes
  - 2.3 Install from booted OS/2 partition
  - 2.4 Installation
3. Installation from CD-ROM
  - 3.1 Installation
4. More information

### 1. BEFORE INSTALLATION

#### 1.1 RUN CHKDSK

Before installing any FixPak, run CHKDSK /F against all drives on your system to correct any file system errors that might be present. You cannot do this while OS/2 is active. You must shut down and run CHKDSK by one of the following methods:

- Method 1: Boot from your Installation and DISK 1 diskettes you used to install OS/2 with. If your file system is HPFS, then put the diskette with CHKDSK32.DLL CHKDSK32.EXE UHPFS.DLL on it in your A: drive before issuing the CHKDSK command.
- Method 2: Boot from the Utilities disk you created via the "Create Utility Diskettes" icon in the System Setup folder.
- Open the Folder OS/2 System
  - Open the Folder System Setup
  - Select the Icon Create Utility Diskettes
- Utility Disk 1 is the OS/2 Installation Disk  
 Utility Disk 2 is the OS/2 Disk 1  
 Utility Disk 3 is the OS/2 Disk 2  
 Utility Disk 4 is the OS/2 Disk 3
- Method 3: Boot from a different OS/2 partition.
- Method 4: Boot from your Installation, DISK 1 and DISK 2 diskettes you used to install OS/2 with.  
 If the Welcome Sreen is displayed select F3=Command Prompt  
 Insert the OS/2 Installation CD, change to the os2image\disk\_3 directory and start chkdsk /f from there to the drive which have to be checked.

23.08.99	ADIC / GRAU SERVICE CD	Page 21
326S00004	CD 4 / 1999	

## 2. INSTALL FROM DISKETTES

- Make sure that there is enough free memory on the harddisk. (100 MByte), if not, change to the directory c:\amu\logs-trc\ and delete some old logfiles.

### 2.1 CREATE CSF DISKETTES

For example: E is the drive, tools the subdirectory, where the file loaddisk.exe is.  
E is the drive csf is the subdirectory, where the imagefiles are, csfbus1 is the file, from where you create the floppy.

```
E:\tools\loaddisk E:\csf\csfbus1.dsk A: /f/y/q
E:\tools\loaddisk E:\csf\csfbus2.dsk A: /f/y/q
```

### 2.2 CREATE FIXPAC XR\_M009 DISKETTES

```
E:\tools\loaddisk E:\OS2\XR_M009\XR_M009A.dsk A: /f/y/q
```

### 2.3 INSTALL FROM BOOTED OS/2 PARTITION

This method allows you to select the products (partitions) to be serviced.  
This is the method you should use if you have more than one OS/2 partition and want to control which one is serviced.

### 2.4 INSTALLATION

Open an OS/2 Window and rename the file startup.cmd to amu.cmd  
Reboot the system

1. Insert CSF DISK Diskette 1 in drive A.
2. Open an OS/2 window or full-screen session.
3. Type A:\SERVICE and press the Enter key.

Note: You could also use the "Drives" object for A: and double click on the "SERVICE.EXE" Icon to start the install.

If the "Product Information" Windows for Corrective Service Facility appears press the OK button

4. Follow the displayed instructions. When prompted to insert Corrective Service Diskette 1 (not CSF DISK Diskette 1), place FixPak XR\_M009 Corrective Service Diskette 1 in drive A. Repeat for the rest of the FixPak disks when requested to do so.

Note: It can take a considerable length of time for the Corrective Service Facility to scan your hard disk for serviceable files. In some cases, it has taken as long as 40 minutes. Please be patient and allow this process to complete.

You get a list of Serviceable products  
Select (black marked) what should be updated

Example:

```
IBM OS/2 Base Operating system -- SYSLEVEL -- c:\os2\...
```

23.08.99	ADIC / GRAU SERVICE CD	Page 22
326S00004	CD 4 / 1999	

Attention: It is possible to update two harddisks  
Select only products on the C Drive

Press the Service Button

5. If this is the first OS/2 Warp FixPak you have applied to this system, then enter the path to the ARCHIVE directory where a copy of replaced files will be stored (for example, C:\ARCHIVE).

Note: This ARCHIVE directory is not related to the ARCHIVES directory built into OS/2 Warp 3.0. Please specify a different path. You must specify a different ARCHIVE directory for each product to be serviced.

If this is not the first OS/2 Warp FixPak, then enter the path to the BACKUP directory where a copy of replaced files will be stored (for example, C:\beforefix09).

Note: You must specify a different BACKUP directory for each product to be serviced.

For either case, make sure there is sufficient space available on the drive you specify. Even though these files are kept in compressed (PACK2) format, they require between 7 and 12 MB of disk space.

Click on "OK".

6. If you get a message " Error opening or creating archive file " in the window Corrective Service Facility Message --> C1 1. Unable to open archive directory
7. You will see an "Application in use" dialog box showing a list of locked files that cannot be serviced while the system is running. You are given two choices - to Continue or Reboot. Select Continue.
8. During the installation process you might see messages about Archiving, Updating and Deferring service.
  - Archiving saves a compressed copy of the original file in the ARCHIVE or BACKUP path you specified.
  - Updating means the original files are replaced with the new ones from this FixPak.
  - Deferring service means the file to be updated is currently in use by the system and cannot be updated. The new files from the FixPak are placed in unpacked format in the \IBMCSFLK\FIX directory on the drive with the most free space. They are processed by the locked file device driver during reboot after you shut down the system.
9. Select NO for a redisplay of the "Product List" after the first part of the FixPak application process has completed if this message is displayed.
10. Click Cancel and Exit to close the Corrective Service Facility window if necessary.
11. Shut down and reboot your system.

You will see the following during reboot of the system if you applied service to the OS/2 partition you were booted from.

The locked file driver is loaded.

23.08.99	ADIC / GRAU SERVICE CD	Page 23
326S00004	CD 4 / 1999	

Processing locked files

Processing complete

The system will do one automatic reboot after the Locked File Device Driver has completed.

Reboot

12. Rename the file amu.cmd back to startup.cmd and reboot

23.08.99	ADIC / GRAU SERVICE CD	Page 24
326S00004	CD 4 / 1999	

### 3. INSTALL FROM CD

- Make sure that there is enough free memory on the harddisk. (100 MByte), if not, change to the directory c:\amu\logs-trc\ and delete some old logfiles.

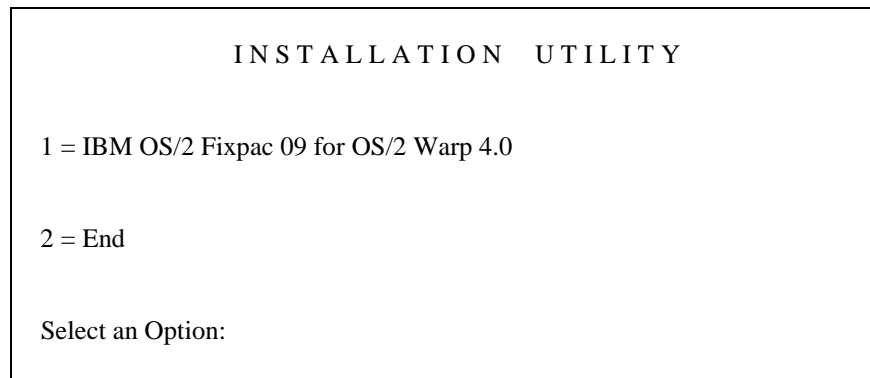
#### 3.1 INSTALLATION

Open an OS/2 Window and rename the file startup.cmd to amu.cmd

Reboot the system

Open an OS/2 window and change to CD ROM drive to x:\os2\xr\_m009\  
where x is the CD ROM Drive

Type install and press the Enter key.



Select Option 2 to start the Fixpac Installation or Option 2 to end



Press OK



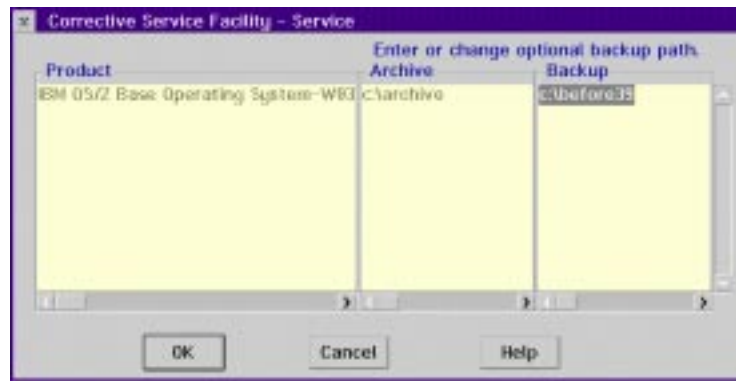


Note: It can take a considerable length of time for the Corrective Service Facility to scan your hard disk for serviceable files. In some cases, it has taken as long as 40 minutes. Please be patient and allow this process to complete.



You get a list of Serviceable products  
 Select (black marked) what should be updated  
 Example:  
 IBM OS/2 Base Operating system -- SYSLEVEL -- c:\os2\...  
 Attention: It is possible to update two harddisks  
 Select only products on the C Drive

Press the Service Button



If this is the first OS/2 Warp FixPak you have applied to this system, then enter the path to the ARCHIVE directory where a copy of replaced files will be stored (for example, C:\ARCHIVE).

Note: This ARCHIVE directory is not related to the ARCHIVES directory built into OS/2 Warp 4.0. Please specify a different path. You must specify a different ARCHIVE directory for each product to be serviced.

If this is not the first OS/2 Warp FixPak, then enter the path to the BACKUP directory where a copy of replaced files will be stored (for example, C:\before09).

Note: You must specify a different BACKUP directory for each product to be serviced.

For either case, make sure there is sufficient space available on the drive you specify. Even though these files are kept in compressed (PACK2) format, they require between 7 and 12 MB of disk space.

Click on "OK".

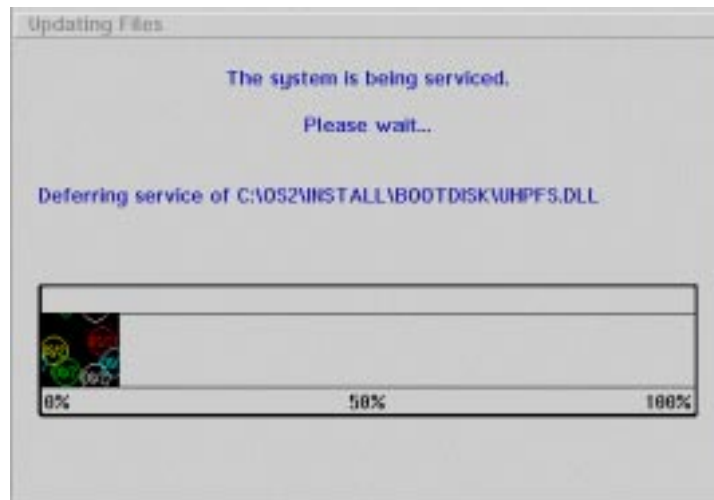
If you get a message

" Error opening or creating archive file "  
 in the window Corrective Service Facility Message  
 --> C1 1. Unable to open archive directory



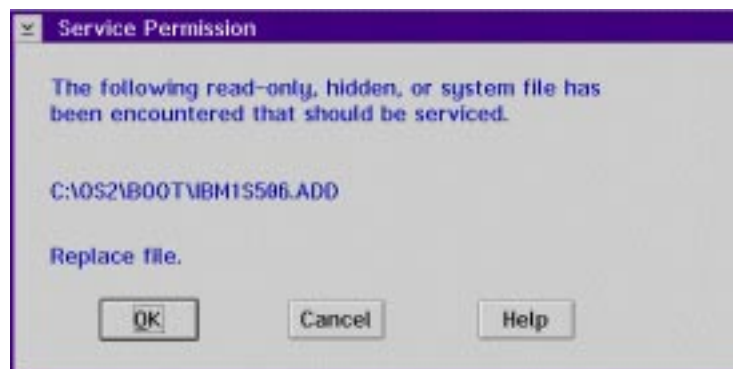
You will see an "Application in use" dialog box showing a list of locked files that cannot be serviced while the system is running.

Select Continue.



During the installation process you might see messages about Archiving, Updating and Deferring service.

- Archiving saves a compressed copy of the original file in the ARCHIVE or BACKUP path you specified.
- Updating means the original files are replaced with the new ones from this FixPak.
- Deferring service means the file to be updated is currently in use by the system and cannot be updated. The new files from the FixPak are placed in unpacked format in the IBMCSFLK\FIX directory on the drive with the most free space. They are processed by the locked file device driver during reboot after you shut down the system.

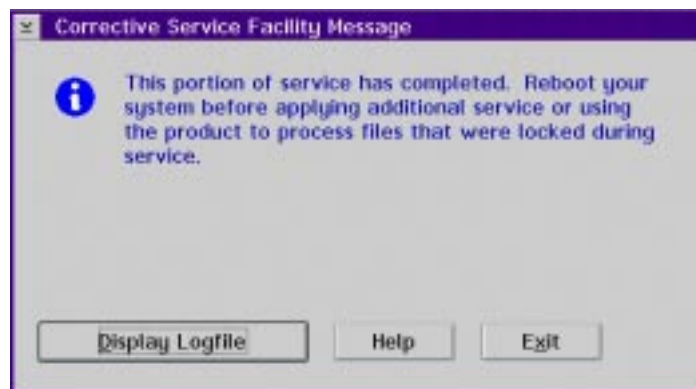


If it is one of the following files, select the "CANCEL" button so you DO NOT replace the newer file with the older one.

- DSPINSTL.EXE
- IBM1S506.ADD
- IBMATAPI.FLT
- IBMIDECD.FLT
- IBMDASD.DDP
- OS2DASD.DMD



Press OK  
 You get this window only if you have pressed CANCEL the window before.



Click Cancel and Exit to close the Corrective Service Facility window if necessary.

Shut down and reboot your system.

You will see the following during reboot of the system if you applied service to the OS/2 partition you were booted from.

The locked file driver is loaded.

Processing locked files

Processing complete

The system will do one automatic reboot after the Locked File Device Driver has completed.

Rename the file amu.cmd back to startup.cmd

Reboot

#### 4. MORE INFORMATION

If you need more information about this fixpac please read the original IBM documentation in the file X:\OS2\XR\_M009\XR\_M009.DOC

23.08.99	ADIC / GRAU SERVICE CD	Page 29
326S00004	CD 4 / 1999	

23.08.99	ADIC / GRAU SERVICE CD	Page 30
326S00004	CD 4 / 1999	

### B3. INSTALLATION PROCESS FOR TCPIP Y2000 UPDATES

- Before Installation:
- Open an OS/2 Window and rename the file startup.cmd to amu.cmd
  - Reboot the system
- After Installation:
- Open an OS/2 Window and rename the file amu.cmd back to startup.cmd
  - Reboot the system

- B3.1.1 TCP/IP V2.0
- B3.2.1 TCP/IP V3.0
- B3.3.1 TCP/IP V3.1
- B3.4.1 TCP/IP V3.5
- B3.5.1 TCP/IP V4.0
- B3.6.1 TCP/IP V4.1

### B3.1.1 TCP/IP V2.0

x:\tcpip\V20\_os2\y2k (x is the CD-ROM Drive)

This is a year 2000 package that contains the updates require to OS/2 TCP/IP to make it year 2000 compliant. The applications that required changes for Year 2000 compliance are:

FTP Server, NewsReader/2, Syslogd (part of TCPUNX.DLL), and Tcpcoex.exe.

NOTE: Before replacing the current versions of the executables/dlls provided in this package, please verify that the dates are later than the ones on your system. If they are not, then the version you have should already contain the Year 2000 updates because the fixes are cumulative, in which case you should NOT replace the versions on your system.

-----

Apar PQ07341 changes the FTPD component of TCP/IP v2.0 to be Year 2000 compliant.

Please replace the following executables in the TCPIP\BIN directory to apply the fix:

ftpd.exe	21.05.97
ftpd.exe	21.05.97
ftpdtrc.exe	21.05.97

-----

Apar PQ07311 changes the NR2 component of TCP/IP v2.0 to be Year 2000 compliant.

Please replace the following executables in the TCPIP\BIN directory to apply the fix:

nr2.exe	20.05.97
---------	----------

-----

Apar PQ07343 changes the SYSLOGD component of TCP/IP v2.0 to be Year 2000 compliant.

Please replace the following executables in the TCPIP\DLL directory to apply the fix:

TCPUNX.DLL	23.05.97
------------	----------

-----

Apar PQ07690 changes TCPCOEX.EXE of TCP/IP v2.0 to be Year 2000 compliant.

Please replace the following executables in the TCPIP\BIN directory to apply the fix:

tcpcoex.exe	28.08.97
-------------	----------

### B3.2.1 TCP/IP V3.0

x:\tcpip\V30\_os2\y2k (x is the CD-ROM Drive)

This is a year 2000 package that contains the updates require to OS/2 TCP/IP to make it year 2000 compliant. The applications that required changes for Year 2000 compliance are:

FTP Server, NewsReader/2, Syslogd (part of TCPUNX.DLL), and Tcpcoex.exe.

NOTE: Before replacing the current versions of the executables/dlls provided in this package, please verify that the dates are later than the versions on your system. If they are not, then the version you have should already contain the Year 2000 updates because the fixes are cumulative, in which case you should NOT replace the versions on your system.

-----  
Please replace the following dlls in the TCPIP\DLL directory.(Even if these dll's are not there originally copy it to TCPIP\DLL).

tnls16.dll	05.01.99
tnls32.dll	05.01.99
setloc1.dll	05.01.99

-----  
Apar IC19681 changes the FTPD component of TCP/IP v3.0 to be Year 2000 compliant.

Please replace the following executables in the TCPIP\BIN directory to apply the fix:

ftpd.exe	08.01.99
ftpd.c.exe	08.01.99
ftpdtrc.exe	08.01.99

-----  
Apar IC18438 changes the NR2 component of TCP/IP v3.0 to be Year 2000 compliant.

Please replace the following executables in the TCPIP\BIN directory to apply the fix:

nr2.exe	20.05.97
---------	----------

-----  
Apar IC18444 changes the SYSLOGD component of TCP/IP v3.0 to be Year 2000 compliant.

Please replace the following executables in the TCPIP\DLL directory to apply the fix:

TCPUNX.DLL	08.01.99
------------	----------

-----  
Apar IC18635 changes TCPCOEX.EXE of TCP/IP v3.0 to be Year 2000 compliant.

Please replace the following executables in the TCPIP\BIN directory to apply the fix:

tcpcoex.exe	08.01.99
-------------	----------

-----



### B3.3.1 TCP/IP V3.1

x:\tcpip\V31\_os2\y2k (x is the CD-ROM Drive)

This is a year 2000 package that contains the updates require to OS/2 TCP/IP to make it year 2000 compliant. The applications that required changes for Year 2000 compliance are:

FTP Server, NewsReader/2, Syslogd (part of TCPUNX.DLL), and Tpcpcoex.exe.

NOTE: Before replacing the current versions of the executables/dlls provided in this package, please verify that the dates are later than the versions on your system. If they are not, then the version you have should already contain the Year 2000 updates because the fixes are cumulative, in which case you should NOT replace the versions on your system.

-----

Apar IC18442 changes the FTPD component of TCP/IP v3.1 to be Year 2000 compliant.

Please replace the following executables in the TCPIP\BIN directory to apply the fix:

ftpd.exe	21.05.97
ftpd.c.exe	21.05.97
ftpd.trc.exe	21.05.97

-----

Apar IC18439 changes the NR2 component of TCP/IP v3.1 to be Year 2000 compliant.

Please replace the following executables in the TCPIP\BIN directory to apply the fix:

nr2.exe	20.05.97
---------	----------

-----

Apar IC18445 changes the SYSLOGD component of TCP/IP v3.1 to be Year 2000 compliant.

Please replace the following executables in the TCPIP\DLL directory to apply the fix:

TCPUNX.DLL	23.05.97
------------	----------

-----

Apar IC18658 changes TCPCOEX.EXE of TCP/IP v3.1 to be Year 2000 compliant.

Please replace the following executables in the TCPIP\BIN directory to apply the fix:

tcpcoex.exe	29.08.97
-------------	----------

### B3.4.1 TCP/IP V3.5

x:\tcpip\V35\_os2\y2k (x is the CD-ROM Drive)

This is a year 2000 package that contains the updates require to OS/2 TCP/IP to make it year 2000 compliant. The applications that required changes for Year 2000 compliance are:

FTP Server, NewsReader/2, Syslogd (part of TCPUNX.DLL), and Tpcpcoex.exe.

NOTE: Before replacing the current versions of the executables/dlls provided in this package, please verify that the dates are later than the versions on your system. If they are not, then the version you have should already contain the Year 2000 updates because the fixes are cumulative, in which case you should NOT replace the versions on your system.

-----

Apar IC18585 changes the FTPD component of TCP/IP v3.5 to be Year 2000 compliant.

Please replace the following executables in the TCPIP\BIN directory to apply the fix:

ftpd.exe	21.05.97
ftpc.exe	21.05.97

-----

Apar IC18586 changes the NR2 component of TCP/IP v3.5 to be Year 2000 compliant.

Please replace the following executables in the TCPIP\BIN directory to apply the fix:

nr2.exe	06.05.97
---------	----------

-----

Apar IC18588 changes the SYSLOGD component of TCP/IP v3.5 to be Year 2000 compliant.

Please replace the following executables in the TCPIP\DLL directory to apply the fix:

TCPUNX.DLL	11.08.97
------------	----------

-----

Apar IC18596 changes TCPCOEX.EXE of TCP/IP v3.5 to be Year 2000 compliant.

Please replace the following executables in the TCPIP\BIN directory to apply the fix:

tcpcoex.exe	28.08.97
-------------	----------

### B3.5.1 TCP/IP V4.0

x:\tcpip\V40\_os2\y2k (x is the CD-ROM Drive)

This is a year 2000 package that contains the updates require to OS/2 TCP/IP to make it year 2000 compliant. The applications that required changes for Year 2000 compliance are:

FTP Server, NewsReader/2, Syslogd (part of TCPUNX.DLL), and Tpcpcoex.exe.

NOTE: Before replacing the current versions of the executables/dlls provided in this package, please verify that the dates are later than the versions on your system. If they are not, then the version you have should already contain the Year 2000 updates because the fixes are cumulative, in which case you should NOT replace the versions on your system.

-----

Apar IC19683 and Apar IC21102 changes the FTPD component of TCP/IP v4.0 to be Year 2000 compliant.

Please replace the following executables in the TCPIP\BIN directory to apply the fix:

ftpd.exe	04.02.99
ftpd.c.exe	04.02.99

-----

Apar IC18587 changes the NR2 component of TCP/IP v4.0 to be Year 2000 compliant.

Please replace the following executables in the TCPIP\BIN directory to apply the fix:

nr2.exe	06.05.97
---------	----------

-----

Apar IC18589 changes the SYSLOGD component of TCP/IP v4.0 to be Year 2000 compliant.

Please replace the following executables in the TCPIP\DLL directory to apply the fix:

TCPUNX.DLL	11.08.97
------------	----------

-----

Apar IC18528 changes TCPCOEX.EXE of TCP/IP v4.0 to be Year 2000 compliant.

Please replace the following executables in the TCPIP\BIN directory to apply the fix:

tcpcoex.exe	25.08.97
-------------	----------

23.08.99	ADIC / GRAU SERVICE CD	Page 36
326S00004	CD 4 / 1999	

### B3.6.1 TCP/IP V4.1

x:\tcpip\V41\_os2\y2k (x is the CD-ROM Drive)

This is a year 2000 package that contains the updates require to OS/2 TCP/IP to make it year 2000 compliant. The applications that required changes for Year 2000 compliance are:

FTP Server

NOTE: Before replacing the current versions of the executables/dlls provided in this package, please verify that the dates are later than the versions on your system. If they are not, then the version you have should already contain the Year 2000 updates because the fixes are cumulative, in which case you should NOT replace the versions on your system.

The file v41y2k.exe is a self extracting zip file that contains all of the changed files. To unzip in the current directory, type

v41y2k .

-----

Apar IC19684 changes the FTPD component of TCP/IP v4.1 to be Year 2000 compliant.

Please replace the following executables in the TCPIP\BIN directory to apply the fix:

ftpd.exe	17.12.97
ftpd.c.exe	17.12.97

-----

23.08.99	ADIC / GRAU SERVICE CD	Page 37
326S00004	CD 4 / 1999	

## B3.7.1 INSTALLATION PROCESS FOR TCP/IP PUBLIC FIXPAK UN00959

### 1. PRE-REQUISITE

WR08210 is a pre-requisite of UN00959

Check this with the syslevel Command

If the Syslevel (C:\mptn\syslevel.mpt) is earlier as WR08210 see B5.1.1

### 2. INSTALL FROM CD

- Make sure that there is enough free memory on the harddisk. (100 MByte),  
if not, change to the directory c:\amu\logs-trc\ and delete some old logfiles.

### 3. CREATE CSF DIRECTORY (SERVICE)

For example: E is the drive, service is the subdirectory, where the targetfiles are located.

Open an OS/2 Window and change to the directory e:\csf and call service

### 4. CREATE FIXPAC UN00959 DIRECTORY

Open an OS/2 Window and change to the directory e:\tcpip\v30\_os2\un00959 and call un00959

### 5. INSTALLATION

This method allows you to select the products (partitions) to be serviced.

This is the method you should use if you have more than one OS/2 partition and want to control which one is serviced.

Open an OS/2 Window and rename the file startup.cmd to amu.cmd  
Add or change following environment variable on the end from config.sys  
SET CSFCROMDIR=C:\UN00959  
SET CSFUTILPATH=C:\SERVICE

Reboot the system

1. ---
2. Open an OS/2 window or full-screen session.
3. Type C:\SERVICE\SERVICE and press the Enter key.

Note: You could also use the "Drives" object for C: and double click on the "SERVICE.EXE" Icon to start the install.

If the "Product Information" Windows for Corrective Service Facility appears press the OK button

4. Follow the displayed instructions

Note: It can take a considerable length of time for the

23.08.99	ADIC / GRAU SERVICE CD	Page 38
326S00004	CD 4 / 1999	

Corrective Service Facility to scan your hard disk for serviceable files. In some cases, it has taken as long as 40 minutes. Please be patient and allow this process to complete.

You get a list of Serviceable products  
 Select (black marked) what should be updated  
 Example:

Select IBM TCPIP VERSION 3.0 for OS/2 – SYSLEVEL –  
 c:\tcpip\bin\syslevel.tcp

Attention: It is possible to update two harddisks  
 Select only products on the C Drive

Press the Service Button

- If this is the first OS/2 Warp FixPak you have applied to this system, then enter the path to the ARCHIVE directory where a copy of replaced files will be stored (for example, C:\ARCHIVE).

Note: This ARCHIVE directory is not related to the ARCHIVES directory built into OS/2 Warp 3.0. Please specify a different path. You must specify a different ARCHIVE directory for each product to be serviced.

If this is not the first OS/2 Warp FixPak, then enter the path to the BACKUP directory where a copy of replaced files will be stored (for example, C:\beforeun00959).

Note: You must specify a different BACKUP directory for each product to be serviced.

For either case, make sure there is sufficient space available on the drive you specify. Even though these files are kept in compressed (PACK2) format, they require between 7 and 12 MB of disk space.  
 Click on "OK".

- If you get a message " Error opening or creating archive file " in the window Corrective Service Facility Message --> C1 1. Unable to open archive directory
- You will see an "Application in use" dialog box showing a list of locked files that cannot be serviced while the system is running. You are given two choices - to Continue or Reboot. Select Continue.
- During the installation process you might see messages about Archiving, Updating and Deferring service.
  - Archiving saves a compressed copy of the original file in the ARCHIVE or BACKUP path you specified.
  - Updating means the original files are replaced with the new ones from this FixPak.
  - Deferring service means the file to be updated is currently in use by the system and cannot be updated. The new files from the FixPak are placed in unpacked format in the \IBMCSFLK\FIX directory on the drive with the most free space. They are processed by the locked file device driver during reboot after you shut down the system.

23.08.99	ADIC / GRAU SERVICE CD	Page 39
326S00004	CD 4 / 1999	

9. If you get a popup during the installation stating that a newer file exists on your harddisk select the "CANCEL" button so you DO NOT replace the newer file with the older one.

10. Click Cancel and Exit to close the Corrective Service Facility window if necessary.

11. Shut down and reboot your system.

You will see the following during reboot of the system if you applied service to the OS/2 partition you were booted from.

The locked file driver is loaded.

Processing locked files

Processing complete

12. Rename the file amu.cmd back to startup.cmd

Reboot

#### 4. MORE INFORMATION

If you need more information about this fixpac please read the original IBM documentation in the file X:\TCP\IP\v30\_os2\UN00959\\*.DOC

23.08.99	ADIC / GRAU SERVICE CD	Page 40
326S00004	CD 4 / 1999	

## B4. COMMUNICATIONS MANAGER CM/2

### B4.1.1 INSTALLATION PROCESS FOR CM/2 REFRESH

ServicePak for Communicationsmanager/2 1.11 - OS/2 Warp Version 3.0

Before Installation:     - Open an OS/2 Window and rename the file  
startup.cmd to amu.cmd

- Reboot the system

After Installation:     - Open an OS/2 Window and rename the file  
amu.cmd back to startup.cmd

- Reboot the system

This ServicePak for Communications Manager/2 1.1 users and  
includes upgrades necessary for customers using OS/2 Warp

Installation:

Open an OS/2 Window type in following command

```
xcopy x:\cm2\cm2111a1\*. * c:\image\cm2111a1\
where x is the CD-ROM drive
```

Now call the cmsetup from the fix  
c:\image\cm2111a1\cmsetup

Window "Warning"

--> Press OK, if you have a legally version acquired  
for the base product

Window "Installation Notes"

--> Press Continue

Window "Target Drive Selection"

--> Select the CM/2 Version on Drive C and press OK

Window "Refresh Product Files"

--> Press Refresh

Window "Change Config.SYS"

--> Select Change CONFIG.SYS and press OK

Window "Communications Manager Completion"

--> Press Close

Done

--> Reboot

Install APAR (→ B4.1.2.)



23.08.99	ADIC / GRAU SERVICE CD	Page 41
326S00004	CD 4 / 1999	

#### B4.1.2. APAR FOR CM/2 VERSION 1.11

- Before Installation:    - Open an OS/2 Window and rename the file startup.cmd to amu.cmd  
                               - Reboot the system
- After Installation:     - Open an OS/2 Window and rename the file amu.cmd back to startup.cmd  
                               - Reboot the system

PREREQUISITES : IBM Communications Manager/2 for OS/2 2.x and OS/2 Warp version 1.11  
 CSD: WR06150. The CSD must be installed for this APAR package to successfully work.

#### INSTALLATION INSTRUCTIONS:

- 1) Make a temporary directory, for example C:\cmtemp, the instructions will use c:\cmtemp as the example.
- 2) Copy the Files cm2abase.zip and cm2bbase.zip from x:\cm2\apar\1\ to your computer to c:\cmtemp Where x is the CD-ROM Drive
- 3) At an OS/2 prompt enter: CMKFMSMI 0  
 (This stops the Communications Manager Frame manager that is started in config.sys)
- 4) Back up the following files in the following directories:

```

cmlib\acsapldr.exe
cmlib\appccfg.h
cmlib\cmmh.msg
cmlib\cmm.msg
cmlib\lulist.exe
cmlib\lutpm.exe
cmlib\pluverb.h
cmlib\lutpm.hlp
cmlib\cmstart.exe
cmlib\remmain.exe
cmlib\cmverify.txt
cmlib\cml2a.srv
cmlib\cmpd.cmd
cmlib\cmpd.pak
cmlib\appnv.ctl
cmlib\cmsess.exe
cmlib\trcmark.exe
cmlib\cmkfmsmi.exe
cmlib\cmkfmde.sys
cmlib\appnp.hlp
cmlib\appnp.pml
cmlib\appnp.pdl
cmlib\dll\appc.dll
cmlib\dll\cmkfmapi.dll
cmlib\dll\appnutl.dll
cmlib\dll\acsgwscp.dll
cmlib\dll\appncfg4.dll
cmlib\dll\acsru.dll
cmlib\dll\acssli.dll
cmlib\dll\appncfg.dll
cmlib\dll\ccdmain.dll

```

23.08.99	ADIC / GRAU SERVICE CD	Page 42
326S00004	CD 4 / 1999	

cmlib\dll\acs3elue.dll  
cmlib\dll\acs3evs.dll  
cmlib\dll\acsipx.dll  
cmlib\dll\cpic.dll  
cmlib\dll\acsmpnt.dll  
cmlib\dll\acs3svc.dll  
cmlib\dll\lutab.dll  
cmlib\dll\acs3rstd.dll  
cmlib\dll\cmfreedl.dll  
cmlib\dll\remapi.dll  
cmlib\dll\rpdhdlr.dll

It is possible that some of these files will not be present on your system, depending on your configuration.

5) Execute the following command from the cmtemp subdirectory:

```
PKUNZIP2 -d -o cm2abase.zip C:\
```

where C: is the drive where Communications Manager/2 is installed. You should change this if Communications Manager/2 is installed on a different drive. The zip file is created such that the files will be placed into cmlib and cmlib\dll in the specified drive.

6) Execute the following command from the cmtemp subdirectory:

```
PKUNZIP2 -d -o cm2bbase.zip C:\
```

where C: is the drive where Communications Manager/2 is installed. You should change this if Communications Manager/2 is installed on a different drive. The zip file is created such that the files will be placed into cmlib and cmlib\dll in the specified drive.

7) Reboot the workstation.

23.08.99	ADIC / GRAU SERVICE CD	Page 43
326S00004	CD 4 / 1999	

## B5 MPTS

### B5.1.1 INSTALLATION PROCESS FOR MPTS SERVICEPAC WR08421 / WR08610

IBMLANLK.LST

#### INSTALLATION

Open an OS/2 Window and rename the file  
c:\startup.cmd to c:\amu.cmd

Öffnen Sie ein OS/2 Fenster und benennen Sie die  
Datei c:\startup.cmd nach c:\amu.cmd um

Reboot the PC

Rebooten Sie den PC

Open an OS/2 Window, change to the directory  
- E:\MPTS\WR08421  
- E:\MPTS\WR08610  
and call install.cmd

Öffnen Sie ein OS/2 Fenster, wechseln Sie nach  
- E:\MPTS\WR08421  
- E:\MPTS\WR08610  
und führen Sie dort die Datei install.cmd aus

For example:  
E is the drive, mpts and wr08xxx are the subdirectories,  
where the targetfiles install.cmd are located.

Beispiel:  
E ist das Laufwerk, mpts und wr08xxx sind die  
Unterverzeichnisse, in welchem die aufzurufende  
Datei install.cmd liegt.

<p>INSTALLATION UTILITY</p> <p>1 = IBM MPTS LAN Adapter and Protocol Support FixPak WR08XXX</p> <p>2 = End</p> <p>Select an Option:</p>
---

Select 1 for Installation or 2 for End

Wählen Sie 1 für die Installation oder 2 für Beenden



Press OK

Drücken Sie OK



Press Install

Drücken Sie Install



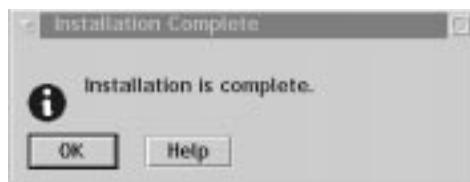
Change to "C" and press OK

Tragen Sie "C" und drücken Sie OK



Press OK

Drücken Sie OK



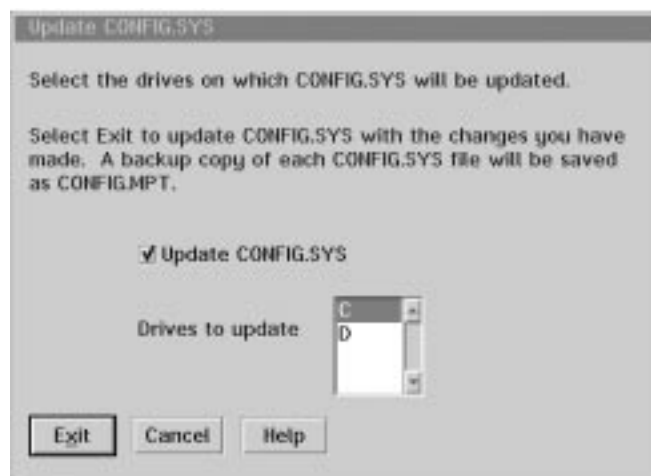
Press OK

Drücken Sie OK



Press EXIT

Drücken Sie EXIT



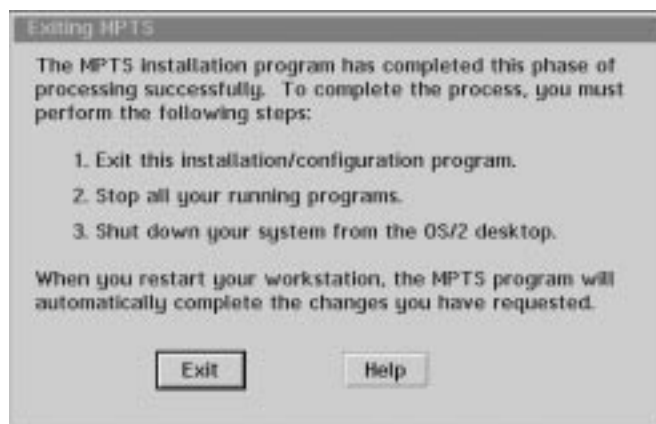
Unselect "D" and press EXIT

Entfernen Sie die Markierung von "D" und drücken Sie EXIT



Press OK

Drücken Sie OK



Press EXIT

Drücken Sie EXIT

WARP 4.0.0 WITH TCP/IP 4.0.0  
WARP CONNECT 3.0.0 WITH TCP/IP 3.0.0

Following message will be displayed

folgende Meldung erscheint

Delete the specified TCPIP entries from the TCPIP configuration

Reboot the PC  
(the locked files will be copied )

Rebooten Sie den PC  
(Die im Zugriff befindlichen Dateien werden kopiert)

For following situation is no Fix available

Für folgende Situation ist kein Fix verfügbar

TCP/IP hangs intermittently, when TCP/IP Config  
Notbook add NET ROUTE after DEFAULT ROUTE,  
and NETWORK is not subnetted

TCP/IP hängt intermetierend, wenn das TCP/IP  
während der Konfiguration eine "NET ROUTE"  
nach der "DEFAULT ROUTE" addiert und das  
Netzwerk nicht in "SUB" Netze unterteilt ist

Edit the file c:\mptn\bin\setup.cmd  
and delete this entry(ies)

Editieren Sie die Datei c:\mptn\bin\setup.cmd  
und löschen Sie dies

Example:

Bsp:

Before:

```
route -fh
ifconfig lo 127.0.0.1
ifconfig lan0 192.168.68.194 netmask 255.255.255.0
REM ifconfig lan1
REM ifconfig lan2
REM ifconfig lan3
REM ifconfig lan4
REM ifconfig lan5
REM ifconfig lan6
REM ifconfig lan7
REM ifconfig sl0
route add default 192.168.68.1 1
route add net 192.168.68 192.168.68.1 1 netmask 255.255.255.0
route add net 192.168 192.168.68.1 1
ipgate off
```

23.08.99	ADIC / GRAU SERVICE CD	Page 48
326S00004	CD 4 / 1999	

After:

```
route -fh
ifconfig lo 127.0.0.1
ifconfig lan0 192.168.68.194 netmask 255.255.255.0
REM ifconfig lan1
REM ifconfig lan2
REM ifconfig lan3
REM ifconfig lan4
REM ifconfig lan5
REM ifconfig lan6
REM ifconfig lan7
REM ifconfig sl0
route add default 192.168.68.1 1
ipgate off
```

Rename the file  
c:\amu.cmd back to startup.cmd

Benennen Sie die Datei  
c:\amu.cmd zurück nach startup.cmd

Reboot the PC

Rebooten Sie den PC



23.08.99	ADIC / GRAU SERVICE CD	Page 49
326S00004	CD 4 / 1999	

## B6 INSTALLATION PROCESS FOR DB/2 FIXPACK

### B6.1.1 WR08120 (DB/2 V2)

FixPak 8120 upgrades DB2 v2.1 products with WR08000 (or higher) installed to WR08120 level.

#### Before Installation:

- Open an OS/2 Window and rename the file startup.cmd to amu.cmd
- Reboot the system

#### After Installation:

- Open an OS/2 Window and rename the file amu.cmd back to startup.cmd
- Reboot the system

#### Installation Instructions

- Open an OS/2 Window and change to x:\db2\wr08120 where x is the CD-ROM
- Type in "grau" and press the Enter key  
The fix will be unzipped to c:\wr08120
- Change to the directory c:\wr08120, type in "install" and press the Enter key
- Window "IBM DATABASE 2 for OS/2 - Fixpak"
- Window "Installation Instructions"  
--> Press continue
- Window "Installation and Maintenance"  
--> Select "IBM DB2 for OS/2 - Single-User"  
--> Select Update from the menu Action
- Window "Update"  
activ - Update config.sys  
not activ - Save a backup version of the installed product  
**IMPORTANT: Do not select the "Save a backup version?" checkbox. This will not properly backup the changes, and restoring from the backup may damage the installed DB2/DDCS product(s). This will be remedied in the future.**  
--> Press the Update Button
- Window "Installation and Maintenance"  
--> Press YES for the warning
- Window "Installation and Maintenance"  
--> Close it with Exit from the menu File
- Shutdown OS/2
- Reboot OS/2

#### Rebinding the database

This step is necessary for the fixes in this FixPak to become effective

- Open an OS/2 Window and change to x:\db2 where x is the CD-ROM
- Type in "dbbind" and press the Enter key

23.08.99	ADIC / GRAU SERVICE CD	Page 50
326S00004	CD 4 / 1999	

## B6.1.2 WR08190 (DB/2 V2)

FixPak 8190 upgrades DB2 v2.1 products with WR08120 (or higher) installed to WR08190 level.

### Before Installation:

- Open an OS/2 Window and rename the file startup.cmd to amu.cmd
- Reboot the system

### After Installation:

- Open an OS/2 Window and rename the file amu.cmd back to startup.cmd
- Reboot the system

### Installation Instructions

- Open an OS/2 Window and change to x:\db2\wr08190 where x is the CD-ROM
- Type in "grau" and press the Enter key  
The fix will be unzipped to c:\wr08190
- Change to the directory c:\wr08190, type in "install" and press the Enter key
- Window "IBM DATABASE 2 for OS/2 - Fixpak"
- Window "Installation Instructions"  
--> Press continue
- Window "Installation and Maintenance"  
--> Select "IBM DB2 for OS/2 - Single-User"  
--> Select Update from the menu Action
- Window "Update"  
activ - Update config.sys  
not activ - Save a backup version of the installed product  
IMPORTANT: Do not select the "Save a backup version?" checkbox. This will not properly backup the changes, and restoring from the backup may damage the installed DB2/DDCS product(s).  
This will be remedied in the future.  
--> Press the Update Button
- Window "Installation and Maintenance"  
--> Press YES for the warning
- Window "Installation and Maintenance"  
--> Close it with Exit from the menu File
- Shutdown OS/2
- Reboot OS/2

### Rebinding the database

This step is necessary for the fixes in this FixPak to become effective

- Open an OS/2 Window and change to x:\db2 where x is the CD-ROM drive
- Type in "dbbind" and press the Enter key

23.08.99	ADIC / GRAU SERVICE CD	Page 51
326S00004	CD 4 / 1999	

### B6.2.1 WR09073 (UDB V5 FIXPACK 6)

IBM DB2 Universal Database\* for OS/2\* Version 5.2 FixPak WR09073

Pre-requisites:

To determine if the required pre-requisites are installed, do the following:

- Double-click on the 'Installation Utility' icon in the 'DB2 for OS/2' folder.
- Select 'View', 'Installed Products'.
- Select the appropriate DB2 product.
- Select 'Details', 'Product Status'. The version should be 05.00.00, 05.02.00 or 05.02.01.

Before Installation:

Before installing this DB2 for OS/2 FixPak, please ensure that the line in your CONFIG.SYS file which initializes the HPFS file system is at the beginning of the file if HPFS is being used. You can identify this line by looking for one similar to the following:

One Harddisk

```
IFS=C:\OS2\HPFS.IFS /CACHE:2048 /CRECL:4 /AUTOCHECK:C
```

Two Harddisks

```
IFS=C:\OS2\HPFS.IFS /CACHE:2048 /CRECL:4 /AUTOCHECK:CD
```

If it is not at the beginning of your CONFIG.SYS, please move it there before the DB2 FixPak installation.

- Open an OS/2 Window and rename the file startup.cmd to amu.cmd
- Reboot the system

After Installation:

- Open an OS/2 Window and rename the file amu.cmd back to startup.cmd
- Reboot the system

Installation Instructions

- Open an OS/2 Window and change to x:\db2\wr09073 where x is the CD-ROM
- Type in "wr09073" and press the Enter key  
The fix will be unzipped to c:\wr09073
- Change to the directory c:\wr09073\en\install, type in "install" and press the Enter key
- Window "IBM DB 2 for OS/2 - Fixpak"
- Window "Installation Instructions"
- > Press continue
- Window "Installation and Maintenance"
- > Select "IBM DB2 Universal Database Personal Edition"
- > Select Update from the menu Action
- Window "Update"
- activ - Update config.sys
- not activ - Save a backup version of the installed product
- IMPORTANT: Do not select the "Save a backup version?" checkbox. This will not properly backup the changes, and restoring from the backup may damage the installed DB2 UDB product(s). This will be remedied in the future.
- > Press the Update Button
- Window "Installation and Maintenance"
- > Press YES for the message

23.08.99	ADIC / GRAU SERVICE CD	Page 52
326S00004	CD 4 / 1999	

- If you are not logged on, the system will bring the logon window
  - Do a logon (AMUADMIN / RASPUTIN), press the OK button
- Window "Installation and Maintenance"
  - OK
- Window "Installation and Maintenance"
  - Close it with Exit from the menu File
- Shutdown OS/2
- Reboot OS/2

#### Rebinding the database

This step is necessary for the fixes in this FixPak to become effective

- Open an OS/2 Window and change to x:\db2 where x is the CD-ROM
- Type in "dbbind" and press the Enter key

23.08.99	ADIC / GRAU SERVICE CD	Page 53
326S00004	CD 4 / 1999	

## B6.2.2 WR09083 (UDB V5 FIXPACK 7)

IBM DB2 Universal Database\* for OS/2\* Version 5.2 FixPak WR09083

Pre-requisites:

This FixPak cannot be installed on top of existing DB2 UDB Version 5.0 code. You must be at the DB2 UDB Version 5.2 level. In order to get to the Version 5.2 level, you can download and install FixPak 6. Once FixPak 6 is installed, you can then apply FixPak 7.

To determine if the required pre-requisites are installed, do the following:

- Double-click on the 'Installation Utility' icon in the 'DB2 for OS/2' folder.
- Select 'View', 'Installed Products'.
- Select the appropriate DB2 product.
- Select 'Details', 'Product Status'. The version should be 05.02.02

Before Installation:

Before installing this DB2 for OS/2 FixPak, please ensure that the line in your CONFIG.SYS file which initializes the HPFS file system is at the beginning of the file if HPFS is being used. You can identify this line by looking for one similar to the following:

One Harddisk

IFS=C:\OS2\HPFS.IFS /CACHE:2048 /CRECL:4 /AUTOCHECK:C

Two Harddisks

IFS=C:\OS2\HPFS.IFS /CACHE:2048 /CRECL:4 /AUTOCHECK:CD

If it is not at the beginning of your CONFIG.SYS, please move it there before the DB2 FixPak installation.

- Open an OS/2 Window and rename the file startup.cmd to amu.cmd
- Reboot the system

After Installation:

- Open an OS/2 Window and rename the file amu.cmd back to startup.cmd
- Reboot the system

Installation Instructions

- Open an OS/2 Window and change to x:\db2\wr09083 where x is the CD-ROM
- Type in "wr09083" and press the Enter key  
The fix will be unzipped to c:\wr09083
- Change to the directory c:\wr09083\en\install, type in "install" and press the Enter key
- Window "IBM DB 2 for OS/2 - Fixpak"
- Window "Installation Instructions"  
--> Press continue
- Window "Installation and Maintenance"  
--> Select "IBM DB2 Universal Database Personal Edition"  
--> Select Update from the menu Action
- Window "Update"  
activ - Update config.sys  
not activ - Save a backup version of the installed product  
IMPORTANT: Do not select the "Save a backup version?" checkbox. This will not properly backup the

23.08.99	ADIC / GRAU SERVICE CD	Page 54
326S00004	CD 4 / 1999	

changes, and restoring from the backup may damage the installed DB2 UDB product(s).

This will be remedied in the future.

- > Press the Update Button
- Window "Installation and Maintenance"
- > Press YES for the message
- If you are not logged on, the system will bring the logon window
  - Do a logon (AMUADMIN / RASPUTIN), press the OK button
- Window "Installation and Maintenance"
  - OK
- Window "Installation and Maintenance"
  - Close it with Exit from the menu File
- Shutdown OS/2
- Reboot OS/2

#### Rebinding the database

This step is necessary for the fixes in this FixPak to become effective

- Open an OS/2 Window and change to x:\db2 where x is the CD-ROM
- Type in "dbbind" and press the Enter key

23.08.99	ADIC / GRAU SERVICE CD	Page 55
326S00004	CD 4 / 1999	

## B7 AMU / DAS SOFTWARE

### B7.1 AMU

#### VER 2.40G (NEW INSTALLABLE VERSION)

- In the subdirectory x:\amu\240g\ you will find the AMU Software 2.40G
- Create Installatindiskettes
  - Copy all from the directories disk1 to disk 3 to empty formatted disks
- Installation / Information
  - See Releasenotes (REL240G)
- Hotfix 1 is included

#### VER 2.40H (NEW INSTALLABLE VERSION)

- In the subdirectory x:\amu\240h\ you will find the AMU Software 2.40H
- Create Installatindiskettes
  - Copy all from the directories disk1 to disk 3 to empty formatted disks
- Installation / Information
  - See Releasenotes (REL240H.PDF)

#### VER 2.40I (FIX)

- In the subdirectory x:\amu\240I\ you will find the AMU Software 2.40I
- This is a CD ROM instalable version (amufix.cmd)
  - Change to the directory where the files are located and start the installation with amufix.cmd
- Create Installationdiskettes
  - Disk1: Copy amufix.cmd, unzip.exe and amu240i1.zip to a empty formatted disk
  - Disk2: Copy amu240i2.zip to a empty formatted disk
  - Disk3: Copy amu240i3.zip to a empty formatted disk
- Installation / Information
  - See Releasenotes (AMURELNOTES240I.PDF)

#### VER 3.02 (NEW INSTALLABLE VERSION)

- In the subdirectory x:\amu\302\ you will find the AMU Software 3.02
- This is a CD ROM instalable version (install.cmd)
  - Change to the directory where the files are located and start the installation with Install.cmd
- Create Installationdiskettes
  - Disk1: Copy install.cmd, pkunzip2.exe and amudisc1.zip to a empty formatted disk
  - Disk2: Copy amudisc2.zip to a empty formatted disk
  - Disk3: Copy amudisc3.zip to a empty formatted disk
- Installation / Information
  - See Releasenotes (X:\DOCUMENT\AMURELNOTES302.PDF)
- Fix A to C are located in the directory x:\amu\302\fixes\...

### B7.2 DAS

#### VER 3.01

- In the subdirectory x:\das\301\ you will find the DAS Software 3.01
- This is a CD ROM instalable version (dasinst.cmd)
  - Change to the directory where the files are located and start the installation with Dasinst.cmd

23.08.99	ADIC / GRAU SERVICE CD	Page 56
326S00004	CD 4 / 1999	

- Create Installationdiskettes

Disk1: Copy dasinst.cmd, unzip.exe and das301.zip to a empty formatted disk

Disk2: Copy ACI301\_1.ZIP to a empty formatted disk

Disk3: Copy ACI301\_2.ZIP to a empty formatted disk

The ACI 3.01 will be available on following operating systems:

- IRIX 5.3, 6.2, 6.4, 6.5
- AIX 4.1, 4.2, 4.3
- HPUX 10.1, 10.2, 11.0
- OSF1 4.0
- Solaris 2.4, 2.5, 2.6
- Reliant Unix 5.43, 5.44
- Linux RedHat 5.1
- Windows NT 4.0
- OS/2 Warp Connect

### B7.3 AMUSAVE

- This is a utility to save the configuration files from the PC

It is located in \amu\amusave\x.xx\

Where x.xx is the version

-



23.08.99	ADIC / GRAU SERVICE CD	Page 57
326S00004	CD 4 / 1999	

## B8 INSTALLATION PROCESS FOR GRAPHICS DRIVER

### B8.1.1 ELSA WINNER 1000T2D V1.22

#### INSTALLATION

These drivers can only be used under OS/2 WARP Version 3 and 4.

To guarantee a successful installation, be sure to have the original VGA driver installed and active.

#### RESTORING THE ORIGINAL VGA DRIVER

Use the restore option at system boot time (Alt+F1) and reset the primary display to VGA. Consult your OS/2 manual for further information.

You have to reboot the system for the change to take effect.

#### INSTALLATION OF THE ELSA DRIVERS VERSION 01.22:

Insert your ELSA CD into your drive, open the CD-ROM drive object on your desktop, change to the OS/2 directory appropriate for your graphics card (i.e., \WINNER\2000AVI\OS2) and start SETUP.EXE. The contents of this file should appear on the "Introduction" page.

#### USING THE SETUP PROGRAM

On the "Adapter Info" page you may view information about your graphics adapter. Use the "Help" function for detailed explanations of the displayed items.

You will have to specify your monitor and the desired graphics resolution on the "Resolution" page.

Please be sure that the information concerning your monitor is correct and complete (particularly the scan rates) in order to avoid damaging your monitor.

After you have selected resolution and monitor you have to set these parameters by pressing the "Set" button.

If the standard resolutions are not sufficient for your purposes or if your monitor is not listed in the monitor database, press the "Add" button.

You will then be able to define custom resolutions and monitor-parameters.

Use the "Installation" page to select the files to transfer to your hard disk and to start the installation process. Use the "Help" button in order to get further information. After completion of the installation you have to shut down and reboot your system. OS/2 WARP will start with the selected resolution. If you have specified the "ELSA Resolution Manager" in the installation procedure, you can use it for changing the selected resolution.

#### MORE INFORMATION

--> X:\elsa\winner\1000T2D\V1\_22\readme.txt  
where X is the CD ROM dirive

23.08.99	ADIC / GRAU SERVICE CD	Page 58
326S00004	CD 4 / 1999	

## B8.2.1 OS/2 DEVICE DRIVER FOR THE S3 TRIO32/TRIO64/64+/V2 CHIP SETS

For example: E ist the Drive, os2\drivers\triov2 is the subdirectory where the target file is located

### 1. CREATE INSTALLATION DIRECTORY

- Open an OS/2 Window and change to e:\os2\drivers\triov2 and call triov2

### 2. RESTORING THE ORIGINAL VGA DRIVER

Use the restore option at system boot time (Alt+F1) and reset the primary display to VGA. Consult your OS/2 manual for further information.

You have to reboot the system for the change to take effect.

### 3. INSTALLATION

Open an OS/2 Window and change to c:\triov2

Call Setup

On the Monitor Configuration utility select Installing Using Defaults for Monitor Type

Press OK

Now on some type of screens it could be that you have a flicker, in this case wait one minute and press the Enter key

Reboot

### 4. ACTIVATION

OS/2 System Folder

System Setup Folder

System Folder

System Properties (Screen)

Page 2 Select Philips Brilliance 1720 DC

Page 1 Selet 1024\*768\*256 75 Hz

Close

SVGA Utility: Press YES

Reboot

23.08.99	ADIC / GRAU SERVICE CD	Page 59
326S00004	CD 4 / 1999	

### B8.3.1 MAXTOR PRODUKTIVA

#### INSTALLATION

These drivers can only be used under OS/2 WARP Version 3 and 4.

To guarantee a successful installation, be sure to have the original VGA driver installed and active.

#### RESTORING THE ORIGINAL VGA DRIVER

Use the restore option at system boot time (Alt+F1) and reset the primary display to VGA. Consult your OS/2 manual for further information.

You have to reboot the system for the change to take effect.

#### INSTALLATION OF THE MAXTOR DRIVERS VERSION:

Call the File maxtor which is located in the CD ROM Directory  
\\OS2\\DRIVERS\\MAXTOR

Open the new Desktop Icon (Double Click) MAG Settings, click on Resolution and change it to 1024 x 768 x 256 and close this window

Reboot your system

23.08.99	ADIC / GRAU SERVICE CD	Page 60
326S00004	CD 4 / 1999	

## B9 INSTALLATION PROCESS FOR OS2 IDE DRIVERS UPDATE

### INTRODUCTION

FixPak 35 (FP35) for Warp 3 and FixPak 6 (FP6) for Warp 4 extended support for fixed Enhanced IDE drives to sizes up to 8.4GB and added new caching HPFS and FAT file system support for removable media drives such as SCSI Syquest Syjet 1.5GB portable hard drive and the Iomega jaz 1GB and 2GB personal hard drives.

This package contains updates to the support in FP35 and FP6, extending support to fixed Enhanced IDE drives greater than 8.4GB, fixing some problems, and adding additional documentation on removable media support. If you install or have installed fixpaks newer than FP38 or FP9 then this package is not required.

For Warp Server Advanced HPFS386 support of removable media, you additionally need LAN Server SelectPack IP\_8508.

These fixpaks are available from <http://ps.software.ibm.com/> under the link "Downloads and News." Install the fixpaks first, carefully following the instructions with the fixpaks; then follow the directions in this README to install this package.

If you are attempting to install Warp 3 or Warp 4 for the first time on a fixed hard drive greater than 4.3GB, then:

1. Follow the instruction on "Updating the Installation Diskettes" in this README and use the new diskettes to install Warp.
2. Install FP35 for Warp 3 or FP6 for Warp 4.
3. Follow the instructions in this README to install this package.

### UPDATING A PREVIOUSLY INSTALLED WARP SYSTEM

---

1. (Optional) Save the existing (old) level of drivers in your system.
  - a. Change Directory to the \os2\boot\ directory on your boot drive.
  - b. Rename the drivers (for example, where the boot drive is C:). The IBMATAPI.FLT driver may not have been previously installed.
 

```
[C:\os2\boot] rename IBM1S506.ADD IBM1S506.ORG
[C:\os2\boot] rename IBMIDECD.FLT IBMIDECD.ORG
[C:\os2\boot] rename OS2DASD.DMD OS2DASD.ORG
[C:\os2\boot] rename IBMATAPI.FLT IBMATAPI.ORG
```
2. Device Driver Install
  - o (Warp 3) Open the Device Driver Install program in the OS/2 System Folder/System Setup Folder.
  - o (Warp 4) Open the Device Driver Install program in the OS/2 System/System Setup/Install-Remove Folder.
3. Point the Device Driver Install file dialogue to the directory where you have placed the new files in this package.

23.08.99	ADIC / GRAU SERVICE CD	Page 61
326S00004	CD 4 / 1999	

4. Reboot the system.

#### MORE INFORMATION

X:\os2\drivers\ide\101398\readme.txt

23.08.99	ADIC / GRAU SERVICE CD	Page 62
326S00004	CD 4 / 1999	

## B10 BIOS Y2K TESTPROGRAM

### B10.1.1 IBM VERSION 4.1

- In the subdirectory x:\BIOSTEST\IBM\049 you will find the German version
- In the subdirectory x:\BIOS\IBMTEST\001 you will find the English version
- If you call the exe file under OS/2 , WIN or DOS a bootable floppy will be generated, follow the instructions there.
- Read the results on your monitor. If the program tells you your system is Year 2000 compliant, congratulation, if not go to the chapter for your AMU.

### B10.2.1 NSTL VERSION 98.10.01

- Copy the File x:\BIOSTEST\NSTL\2000.exe to a floppy
- Boot your AMU PC to DOS with a DOS boot diskette (Ver3.2 or higher)
- Execute the 2000.EXE Program
- Agree to the question with „Y“ (on German systems „Z“)
- Read the results on your monitor. If the program tells you your system is Year 2000 compliant, congratulation, if not go to the chapter for your AMU.

### B10.3.1 SNI VERSION 1.02

- Copy the File x:\BIOSTEST\SNI\BIOS2000.exe to a floppy
- Boot your AMU PC to DOS with a DOS boot diskette (Ver3.2 or higher)
- Execute the 2000.EXE Program
- Read the results on your monitor. If the program tells you your system is Year 2000 compliant, congratulation, if not go to the chapter for your AMU.

## B11 ABBA/2, ABBA/E, ABBA/J CODES

→ \ABBASYS\ABBA?\.....

You will find all the Robot Code on this CD under x:\ABBASYS\ABBA?\VERSION\  
Where X is the CD Rom Drive, ABBA? is the Subdirectory for the different Systems like ABBA2 or ABBAE, Version is the Subdirectory for the different Releases, like 230G.

23.08.99	ADIC / GRAU SERVICE CD	Page 63
326S00004	CD 4 / 1999	

## B12 REMOTE CONTROLL SOFTWARE

### B12.1.1 KOPYKAT PATCH – UPGRADE FROM 1.X TO 1.21

READKK.TXT for KopyKat 1.1x through 1.2x

In the subdirectory x:\kopykat you will find it.

This patch will update KopyKat v1.1, v1.11 or v1.2 to v1.21. It contains the following improvements:

New features(1.2):

SPX/IPX support for connecting through Netware networks

Command line options for the Kopy side of the connection so you can automate calls made to the Kat machines.

An uninstall program has been added

Bug fixes:

Enhanced reliability through modems when connecting several times

Enhanced keyboard and mouse processing

Kat machine lockup problem fixed

Various other fixes and enhancements

File transfer problems

KKPATCH.ZIP is a PKZIP file that contains the following 4 files:

READKK.TXT The file you are reading now.  
 OS2PATCH.EXE The OS/2 patch program that applies the patch.  
 PATCH121.RTP Data file for patch from 1.1 to 1.21  
 KKPATCH.CMD Command file to run patch

The patch program will automatically make a backup of your files to a directory named BACKUP beneath your existing KOPYKAT directory.

To apply the patch to KopyKat 1.1x for OS/2:

- 1) Copy all 4 files to your KOPYKAT directory.
- 2) Close KopyKat as the patch will not work if Kopy or Kat are running.
- 3) At an OS/2 prompt, change to the directory where KopyKat is installed (CD\KOPYKAT) and type KKPATCH to run and apply the patch.
- 4) When the program finishes, run Kopy (or Kat)
- 5) To verify that the patch has been installed correctly, click Help on the menu bar and choose About. The version displayed should be 1.21.

23.08.99	ADIC / GRAU SERVICE CD	Page 64
326S00004	CD 4 / 1999	

If the patch program fails, just copy the files from the backup directory, fix the problem that RTPatch reported, and run the patch again. We have tested the patch program extensively on several different systems, but it's not possible to duplicate every possible configuration. If you are experiencing difficulty, please give Hilgraeve Customer Support a call at (313)243-0576, and we will be glad to assist you.

Running the patch a second time won't cause any damage. The patch program is smart enough to know that the patch has already been applied and, won't make any further changes.

The patch program will fail if required files are missing from your KopyKat installation.



23.08.99	ADIC / GRAU SERVICE CD	Page 65
326S00004	CD 4 / 1999	

## B12.2.1 VERSION 1.30 (UB00000) TO VERSION 1.33 (UB09900)

1. Installation from CD
2. Installation from Diskettes
  - 2.1 Create Diskettes
  - 2.2 Before Installation
  - 2.3 Installation
  - 2.4 More Information

1. Installation from CD

This CSD contains all the fixes and enhancements contained in DCAF 1.31 CSD UB09800 and DCAF 1.32 CSD UB09850 plus additional fixes and enhancements. This CSD can be applied either to DCAF 1.3 workstations at CSD level UB00000 or to DCAF workstations at CSD level UB09800 or to DCAF workstations at CSD level UB09850.

Before applying the CSD fixes, close all DCAF processes

call x:\dcaf\install

select Option 1 (DCAF Update 1.33)

Window "Product information"

→ press the "OK" button

Window "Corrective Service Facility"

→ select the DCAF product, which is located on the drive C

For example:

"Distributed Console Access Facility-(UB00000)-<C:\DCAF13\SYSLEVEL.EQN>

→ press the "Service" button

Window "Corrective Service Facility - Service"

→ Enter or change the optional backup path

For example: Backup path "C:\olddcaf130"

→ press the "OK" button

Window "Application is in use"

→ press the "Continue" button

The system is being serviced

Window "Corrective Service Facility Message"

→ Press the "Exit" button

Reboot

## 2. Installation from Diskettes

### 2.1 Create Diskettes

For example: E is the drive, tools the subdirectory, where the file loaddisk.exe is. E is the drive dcaf and v133 are the subdirectories, where the imagefiles are, dcaf1331 is one of the files, from where you create the floppy.

```
E:\tools\loaddisk E:\dcaf\v133\dcaf1331.dsk A: /f/y/q
→ Corrective Service Boot Diskette 1
E:\tools\loaddisk E:\dcaf\v133\dcaf1332.dsk A: /f/y/q
→ Corrective Service Boot Diskette 2
E:\tools\loaddisk E:\dcaf\v133\dcaf1333.dsk A: /f/y/q
→ Corrective Service Diskette 1
E:\tools\loaddisk E:\dcaf\v133\dcaf1334.dsk A: /f/y/q
→ Corrective Service Diskette 2
E:\tools\loaddisk E:\dcaf\v133\dcaf1335.dsk A: /f/y/q
→ Corrective Service Diskette 3
```

### 2.2 Before Installation

Check the config.sys

Make sure that there are no entries in the config.sys for following environment variable

- CSFCROMDIR
- CSFUTILPATH

If there are entries in, remark it and reboot, to activate the changes before you install the fix

You can check this also if you type in following into an OS/2 window

```
set csfdromdir
→ The answer should be
csfdromdir=(null)
```

```
set csfutilpath
→ The answer should be
csfutilpath=(null)
```

If you get an answer like csfutilpath=c:\service, please remark this entry in the config.sys and reboot to make the changes activ.

### 2.3 Installation

This CSD contains all the fixes and enhancements contained in DCAF 1.31 CSD UB09800 and DCAF 1.32 CSD UB09850 plus additional fixes and enhancements. This CSD can be applied either to DCAF 1.3 workstations at CSD level UB00000 or to DCAF workstations at CSD level UB09800 or to DCAF workstations at CSD level UB09850.

Before applying the CSD fixes, close all DCAF processes

Insert the Corrective Service Boot Diskette 1 into the drive a: and call a:service

Window "Product information"  
→ press the "OK" button

If you get the window "select source drive" select "A: External Drive" and press the "OK" button.

You get this window only if a CD-ROM is in, where the program service.exe is on.

Follow the system instruction.

23.08.99	ADIC / GRAU SERVICE CD	Page 67
326S00004	CD 4 / 1999	

Window "Corrective Service Facility"

→ select the DCAF product, which is located on the drive C

For example:

"Distributed Console Access Facility-(UB00000)-<C:\DCAF13\SYSLEVEL.EQN>

→ press the "Service" button

Window "Corrective Service Facility - Service"

→ Enter or change the optional backup path

For example: Backup path "C:\olddcaf130"

→ press the "OK" button

Window "Application is in use"

→ press the "Continue" button

The system is being serviced

Follow the system instruction

Window "Corrective Service Facility Message"

→ Press the "Exit" button

Reboot

#### 2.4 More Information

More information are in the files "readme.1st" and "eqn\_read.me" which are located on the Corrective Service Diskette 1.

23.08.99	ADIC / GRAU SERVICE CD	Page 68
326S00004	CD 4 / 1999	

## B12.2.2 VERSION 1.31 (UB09800) OR HIGHER TO VERSION 1.34 (UB09950)

This is a copy of "DCAF YEAR 2000 READY" feature. Please pay attention to the fact that installation is a subject to possession of a corresponding valid IBM license.  
(Partnumber for license: 15A 230 256)

1. Installation from CD
2. Installation from Diskettes
  - 2.1 Create Diskettes
  - 2.2 Before Installation
  - 2.3 Installation
  - 2.4 More Information

1. Installation from CD

This CSD contains all the fixes and enhancements contained in DCAF 1.32 CSD UB09850, DCAF 1.33 CSD UB09900, plus additional fixes and enhancements. This CSD can be applied to DCAF workstations at CSD level UB09800 (V1.31) or later.

Before applying the CSD fixes, close all DCAF processes

call x:\dcaf\install

Select Option 2 (DCAF 1.34)

Window "Product information"

→ press the "OK" button

Window "Corrective Service Facility"

→ select the DCAF product, which is located on the drive C

For example:

Distributed Console Access Facility - (UB09800)-<C:\DCAF13\SYSLEVEL.EQN>

→ press the "Service" button

Window "Auto-commit products"

→ press the "Yes" button

Window "Corrective Service Facility - Service"

→ Enter or change the optional backup path

For example: Backup path "C:\olddcaf131"

→ press the "OK" button

Window "Application is in use"

→ press the "Continue" button

The system is being serviced

Window "Corrective Service Facility Message"

→ Press the "Exit" button

Reboot

23.08.99	ADIC / GRAU SERVICE CD	Page 69
326S00004	CD 4 / 1999	

## 2. Installation from Diskettes

### 2.1 Create Diskettes

For example: E is the drive dcaf, v134 and disk1 are the subdirectories, where the files for the first floppy are located.

```
xcopy e:\dcaf\v134\disk1\*.* a: /h/o/t/s/e/r/v
label a:
sp disk 1
→ Corrective Service Boot Diskette 1
```

```
xcopy e:\dcaf\v134\disk2\*.* a: /h/o/t/s/e/r/v
label a:
sp disk 2
→ Corrective Service Boot Diskette 2
```

```
xcopy e:\dcaf\v134\disk3\*.* a: /h/o/t/s/e/r/v
label a:
csf disk 1
→ Corrective Service Diskette 1
```

```
xcopy e:\dcaf\v134\disk4\*.* a: /h/o/t/s/e/r/v
label a:
csf disk 2
→ Corrective Service Diskette 2
```

```
xcopy e:\dcaf\v134\disk5\*.* a: /h/o/t/s/e/r/v
label a:
dcafwin1
→ Corrective Service Diskette 3
```

### 2.2 Before Installation

Check the config.sys

Make sure that there are no entries in the config.sys for following environment variable

- CSFCROMDIR
- CSFUTILPATH

If there are entries in, remark it and reboot, to activate the changes before you install the fix

You can check this also if you type in following into an OS/2 window

```
set csfedromdir
→ The answer should be
csfedromdir=(null)
```

```
set csfutilpath
→ The answer should be
csfutilpath=(null)
```

If you get an answer like csfutilpath=c:\service , please remark this entry in the config.sys and reboot to make the changes activ.

### 2.3 Installation

This CSD contains all the fixes and enhancements contained in DCAF 1.32 CSD UB09850 , DCAF 1.33 CSD UB09900, plus additional fixes and enhancements. This CSD can be applied to DCAF workstations at CSD level UB09800 (V1.31) or later.

Before applying the CSD fixes, close all DCAF processes

23.08.99	ADIC / GRAU SERVICE CD	Page 70
326S00004	CD 4 / 1999	

Insert the Corrective Service Boot Diskette 1 into the drive a: and call a:service

Window "Product information"

→ press the "OK" button

If you get the window "select source drive" select "A: External Drive" and press the "OK" button.

You get this window only if a CD-ROM is in, where the program service.exe is on.

Follow the system instruction.

Window "Corrective Service Facility"

→ select the DCAF product, which is located on the drive C

For example:

"Distributed Console Access Facility-(UB09800)-<C:\DCAF13\SYSLEVEL.EQN>

→ press the "Service" button

Window "Auto-commit products"

→ press the "Yes" button

Window "Corrective Service Facility - Service"

→ Enter or change the optional backup path

For example: Backup path "C:\olddcaf13x", where x is the old version

→ press the "OK" button

Window "Application is in use"

→ press the "Continue" button

The system is being serviced

Follow the system instruction

Window "Corrective Service Facility Message"

→ Press the "Exit" button

Reboot

#### 2.4 More Information

More information are in the files "readme.lst" and "eqn\_read.me" which are located on the Corrective Service Diskette 1.

23.08.99	ADIC / GRAU SERVICE CD	Page 71
326S00004	CD 4 / 1999	

## C. PROBLEMS AND SOLUTION

### C1 PROBLEMS WITH OR AFTER THE INSTALLATION FROM OS/2 WARP FIXPACK'S

#### 1. UNABLE TO OPEN ARCHIVE DIRECTORY

If you get a message about problems with the Archive directory (for example, cannot find or unable to open), then the most probable cause is that a previous Fixpak was applied and the Fixpak ARCHIVE or BACKUP directory was deleted.

--> Please check if following files exist

C:\OS2\INSTALL\LOGF0000.OS2  
 C:\OS2\INSTALL\LOGSTART.OS2  
 C:\OS2\INSTALL\LOGARCH.OS2

C:\MMOS2\INSTALL\LOGF0000.MPM  
 C:\MMOS2\INSTALL\LOGSTART.MPM  
 C:\MMOS2\INSTALL\LOGARCH.MPM

C:\CSF\_SEL.000  
 C:\FIXSTART

If one or more files exists, rename them and try the FixPak installation again. If it works, delete the renamed files.

If some files are set to readonly please use  
 attrib -r "filename"

- OS/2 3.00

For more information please see

x:\OS2\XR\_W039\XR\_W039.DOC where X is the CD-ROM drive

- OS/2 4.00

For more information please see

x:\OS2\XR\_M009\XR\_M009.DOC where X is the CD-ROM drive

23.08.99	ADIC / GRAU SERVICE CD	Page 72
326S00004	CD 4 / 1999	

## C2 PROBLEMS WITH GRAPHICS ADAPTER

### 1. ELSA WINNER 1000T2D

Problems after booting with SVGA  
PC have to be powered off and on on the PC-Backside

→ SET back to VGA Mode

OS/2 Warp 3

-- OS/2 Warp 3.0 Fixpack XR\_W039

→ B1

-- OS/2 DEVICE DRIVER FOR THE S3 Trio32/Trio64/64+/V2 CHIP SETS

→ B8.2.1

OS/2 Warp 4

-- OS/2 Warp 4.0 Fixpack XR\_M009

→ B2

-- OS/2 DEVICE DRIVER FOR THE S3 Trio32/Trio64/64+/V2 CHIP SETS

→ B8.2.1



23.08.99	ADIC / GRAU SERVICE CD	Page 73
326S00004	CD 4 / 1999	

## D1 GET INFORMATION ABOUT UPDATES

### IF YOU NEED INFORMATION ABOUT UPDATES ABOUT

Year 2000 Kompliance changes or about updates from this CD,  
please send a email to [juergen.sigloch@adic-grau.de](mailto:juergen.sigloch@adic-grau.de)  
with the header "Y2K INFO AND CD UPDATES" and we will inform you  
about changes.