

## RFC Editor Report

64th IETF Meeting  
Vancouver, Canada

# RFC *Editor*

Monthly Stats

Since Last IETF:

July 2005 – October 2005

<u>Processed</u>	<u>Docs</u>	<u>~Pages</u>
DNPs/Withdrawals:	3	
<b>Total Published:</b>	<b>105*</b>	<b>2987</b>

<u>Submissions</u>	<u>Docs</u>
IETF Submissions:	97
Independent Submissions:	2
<b>Total Submissions:</b>	<b>99</b>

*\*2 Expedited docs + 6 in AUTH48*

---

	Count	Median Wks in State	Max Wks in State
■ Editable:	150	10	*
■ Await final RFC review	24	1.4	11
■ Await Norm. Ref	40	*	*
■ Await author (AUTH48)	46	1.4	15
■ Await review (ISR)	20	20	72
■ Await author (ISR)	5	18	27

---

\*: Not meaningful because of Norm Ref holds

- Publication throughput: The trend is UP.

	Submitted/ Month	Published/ Month	Reported @
Mar – Jul 04	28.2	26.8	IETF 60
Aug – Oct 04	28.7	31.0	IETF 61
Nov04–Feb05	31.2	13.8*	IETF 62
Mar – Jun 05	34.2	29.8	IETF 63
Jul – Oct 05	24.75	26.25	IETF 64

\*Holidays and staff turnover

- Collaborated on an experiment to introduce editing earlier in the IETF Process.
  - Coordinated by Bert Wijnen
  - Results presented at TechSpec BoF.

- Rationalized treatment of Normative Reference holds.
    - Norm Refs have become a major problem.
    - New state: MISSREF: queue docs at submittal to RFC Editor until all their Norm Refs are also submitted.
    - Queue again after editing, before final review, until all ref'd RFCs are also edited.
-

- Automatic generation of publication queue  
<http://www.rfc-editor.org/queue.html>
  - More info in queue about Norm Refs
- Pending Errata file – lists errata we have yet to confirm and post.

- Office Hours were held at this IETF
  - Monday – Wednesday 10 – 3 pm
- The RFC Editor presented its tutorial on “RFC Editor Training”.



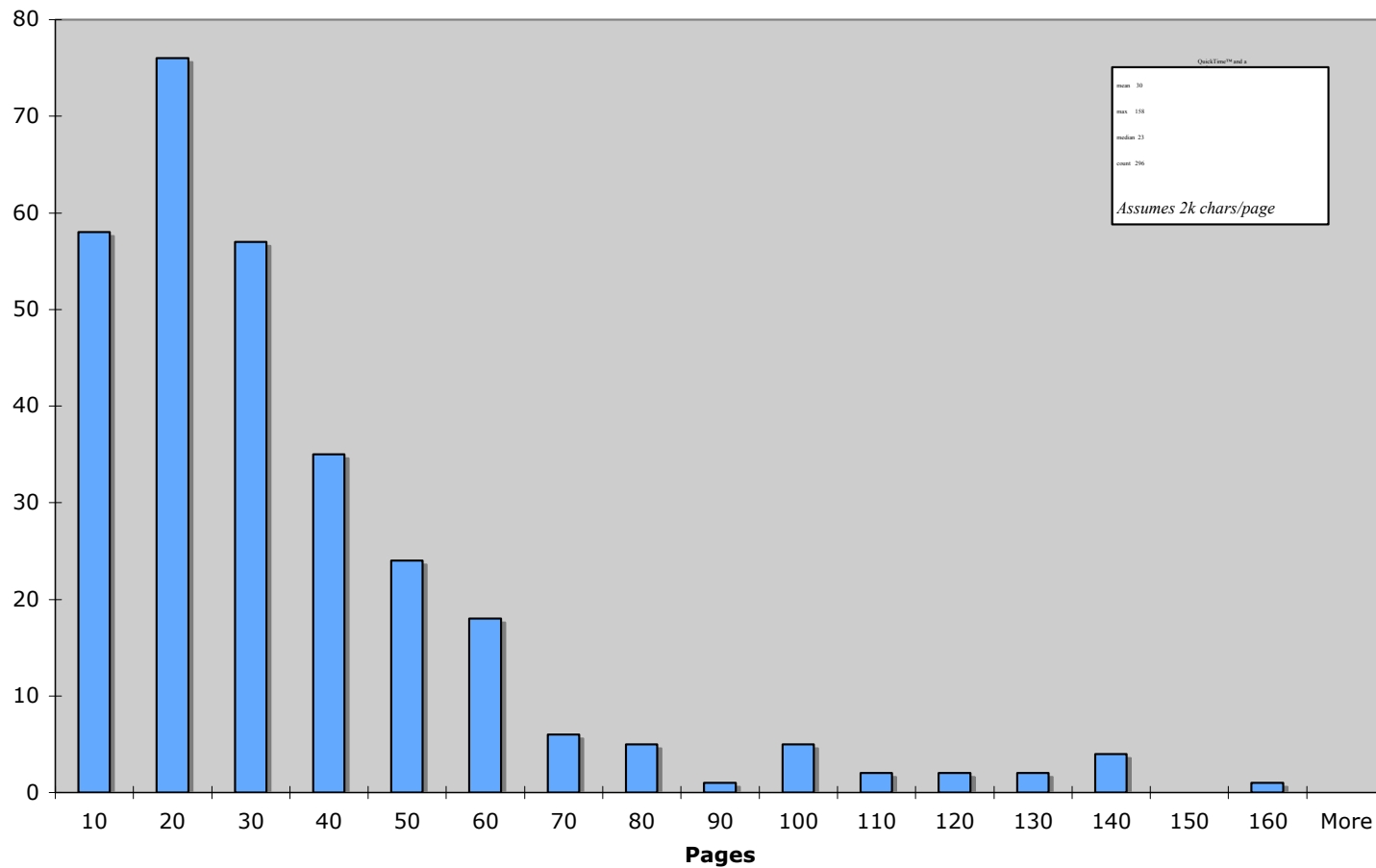
■ Thank you.

□ Web site: <http://www.rfc-editor.org/>

□ Interest list: [rfc-interest@rfc-editor.org](mailto:rfc-interest@rfc-editor.org)

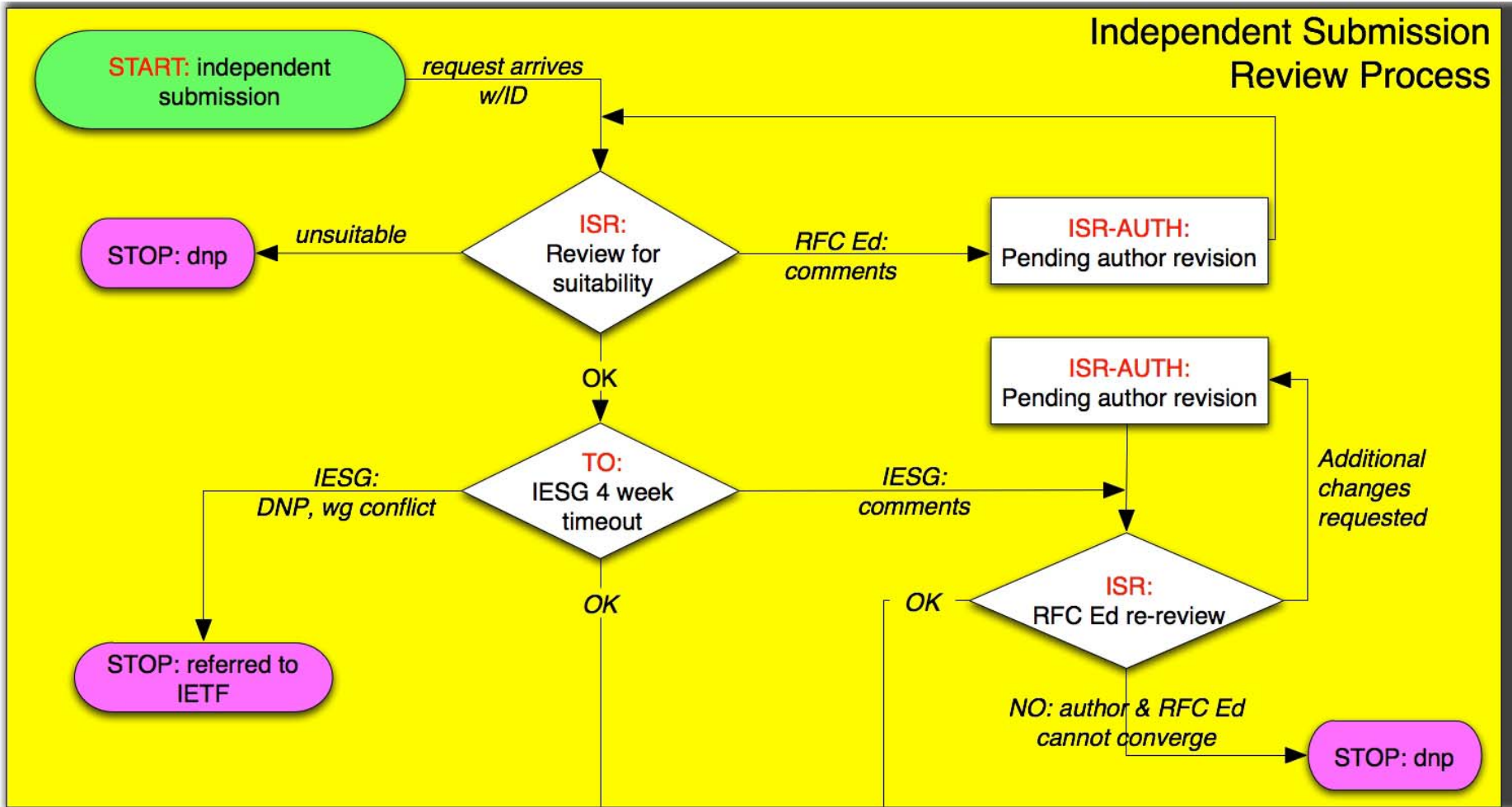
# RFC Editor

Histogram of Queued Document Lengths



# RFC Editor

## Document Processing



# Publication Process

**START: IETF submission**

*IESG: protocol / document action*

**START: IAB submission**

*request arrives w/ ID*

**MISSREF:** wait to receive normative references

**IANA:** registry creation

**EDIT:** nroff, grammar, spelling

**AUTH:** fix

**REF:** waiting for normative references

**RFC EDITOR:** final review

**STOP:** withdrawn

assign RFC #

**AUTH 48:** authors review ("48 hours")

long delay

**AUTH:** fix

**PUBLISH**

**STATES:**  
AUTH = holding for author action  
AUTH48 = "authors 48 hours" final review  
EDIT = approved by IESG, awaiting processing  
IANA = RFC-Editor/IANA registration coordination  
IESG = holding for IESG action  
ISR = Independent Submission Review  
ISR-AUTH = revisions based on ISR feedback  
REF = holding for normative reference

