



Logic Software Inc.
E-mail: info@logicsoftware.net
URL: <http://www.logicsoftware.net>

Easy Projects .NET Installation Guide Version 5.0

Last updated: July 16, 2007

System Requirements

Before proceeding with Easy Projects .NET installation, please make sure you have the following prerequisites installed:

OS: Windows 2000, Windows XP Pro or Windows 2003

Internet Information Services (IIS)

Installation instructions:

<http://easyprojects.net/kb/article.asp?ID=19>

.NET Framework 2.0

Installation instructions:

<http://www.microsoft.com/downloads/details.aspx?familyid=0856EACB-4362-4B0D-8EDD-AAB15C5E04F5&displaylang=en>

MS SQL Server 2000, MSDE 2000, MS SQL 2005 or MS SQL Express 2005

MS SQL Server Express 2005 Download link:

<http://go.microsoft.com/fwlink/?LinkId=65212>

MS SQL Server Express 2005 Management Studio (GUI Interface) link:

<http://go.microsoft.com/fwlink/?LinkId=65110>

License Agreement

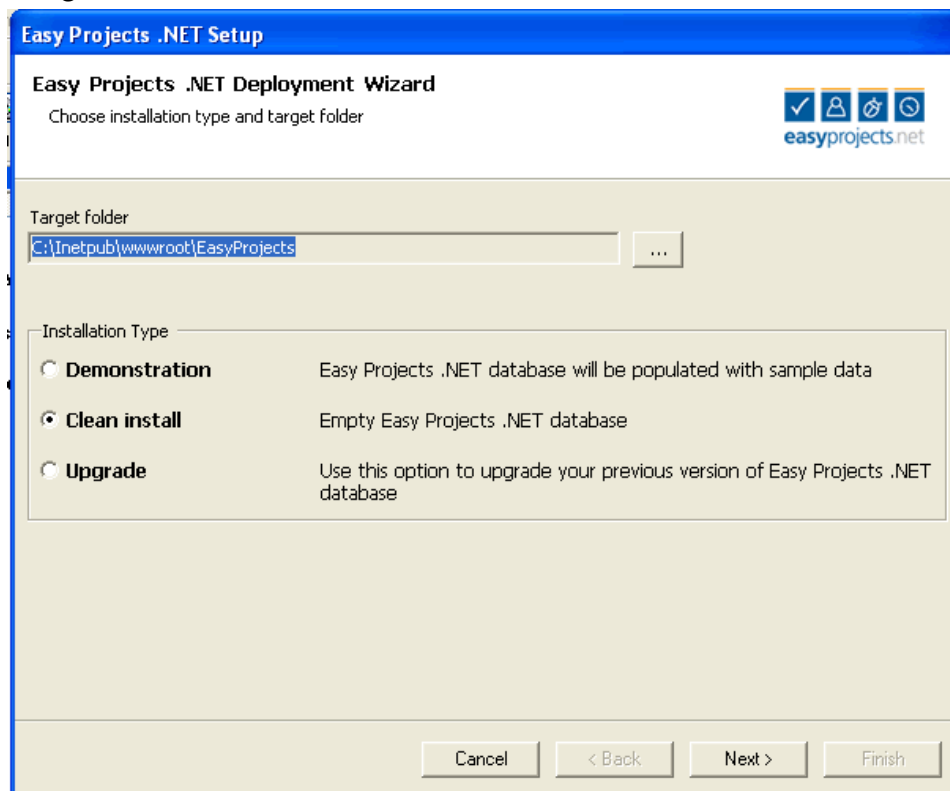
Run Easy Projects .NET setup. Click “Next” on two first setup wizard screens. Carefully read the License Agreement that will appear on the next screen. After accepting Easy Projects .NET license agreement, you will be transferred to the Database Installation page.

Database Installation

The first step allows you to choose a database installation method. There are three methods to choose from as shown in Figure 1:

1. **Demonstration Install** (Easy Projects .NET will be installed with sample data that will help you to get acquainted with the application without spending time on filling in project data)
2. **Clean Install** (Easy Projects .NET will be installed with empty database which you can fill in on your own)
3. **Upgrade Install** (if you have already the installed version of Easy Projects .NET and don't want to lose the existing data then this method allows you to upgrade your version and database)

Figure 1: Database Installation: Choose Installation Method



On the second step you should input SQL Server information: name, type of the database authentication, user name, password and database name – Easy Projects.NET database as shown in Figure 2. On this step you will be able to test the connection to the chosen database using these parameters and make sure that the data you have entered are correct. This information will be used by Easy Projects.NET for database access.

Figure 2: Database Installation: Configure

The screenshot shows the 'Easy Projects .NET Setup' window, specifically the 'Easy Projects .NET Deployment Wizard' step titled 'Choose your database installation options'. The window is divided into two main sections. The top section, labeled 'Database', contains a magnifying glass icon and fields for 'Sql Server' (set to '(local)'), 'Database name' (set to 'EasyProjects'), 'User name' (set to 'sa'), and 'Password'. Below these fields, a message states 'Windows authentication is disabled because ASP.NET is not running under Active Directory account'. There is a checkbox for 'Use existing Easy Projects .NET database (it will not be modified)' and a 'Test connection' button. The bottom section, labeled 'Easy Projects .NET Administrator Password', features a user icon and a 'User name' field set to 'Administrator'. It has two radio button options: 'Use Default Administrator password' (selected) with a password field set to 'admin', and 'Use My Own Administrator password' with empty fields for 'Password' and 'Confirm password'. At the bottom of the window are four buttons: 'Cancel', '< Back', 'Next >', and 'Finish'.

While on this page you are allowed to change the Administrator default password and choose your own with the help of which you will logon to the system.

In Demonstration install you can change the default password **epdemo** to any that suits you. It will be applicable to all users.

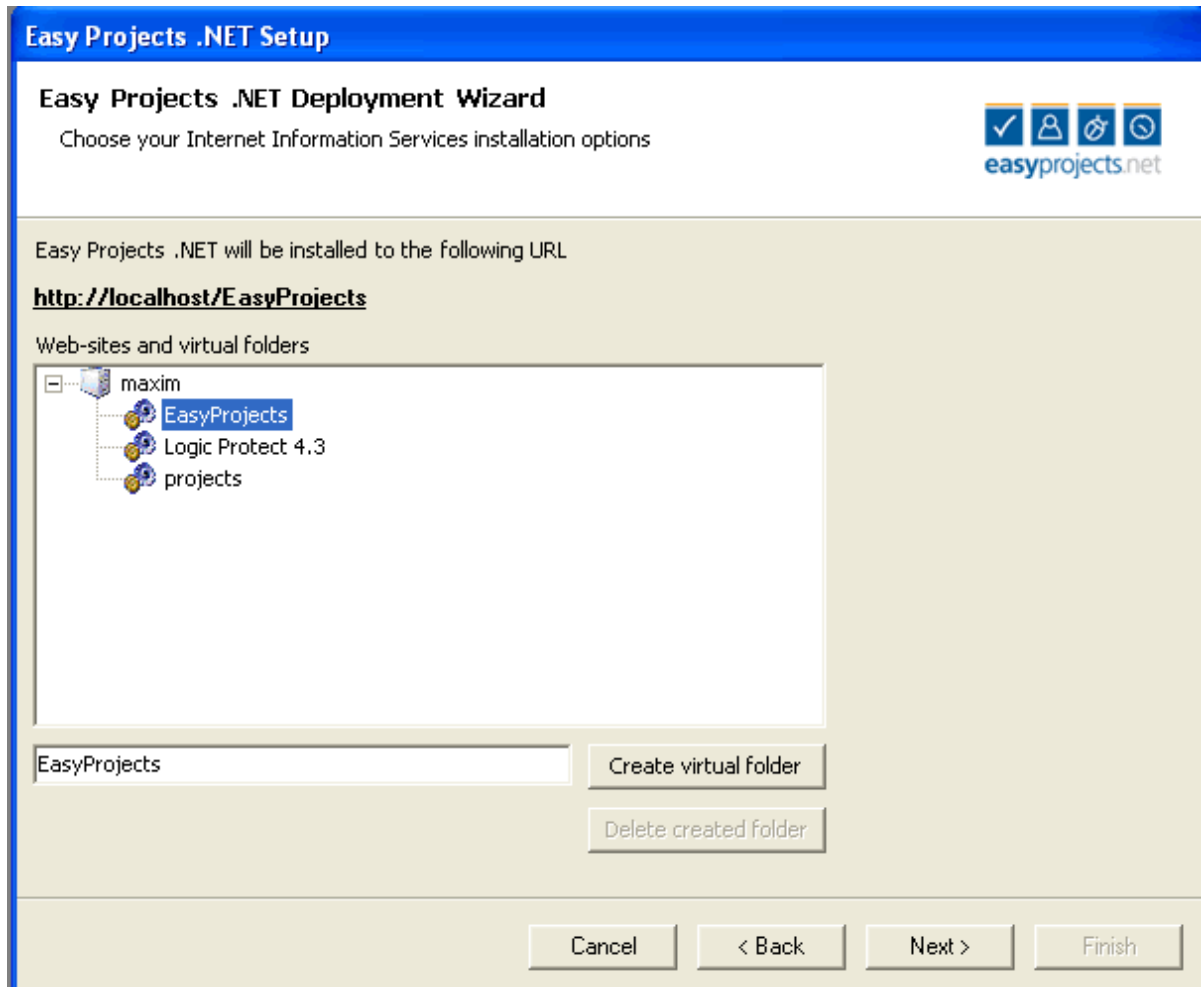
Clean install goes only with Administrator account whose default password **admin** you can change to any that is convenient for you.

If you have chosen Upgrade install then you can logon to the system with the help of the password that you used in your previous version of Easy Projects .NET.

IIS Configuration

The next screen as shown in Figure 3 allows you to choose a web-site and create a virtual directory Easy Projects .NET will be configured to run from. Having made this choice under the inscription 'Easy Projects .NET will be installed to the following URL' you will see the URL at which your installed version of Easy Projects .NET will be available. This URL will appear once again on the last screen of the installer.

Figure 3: Internet Information Services Setup



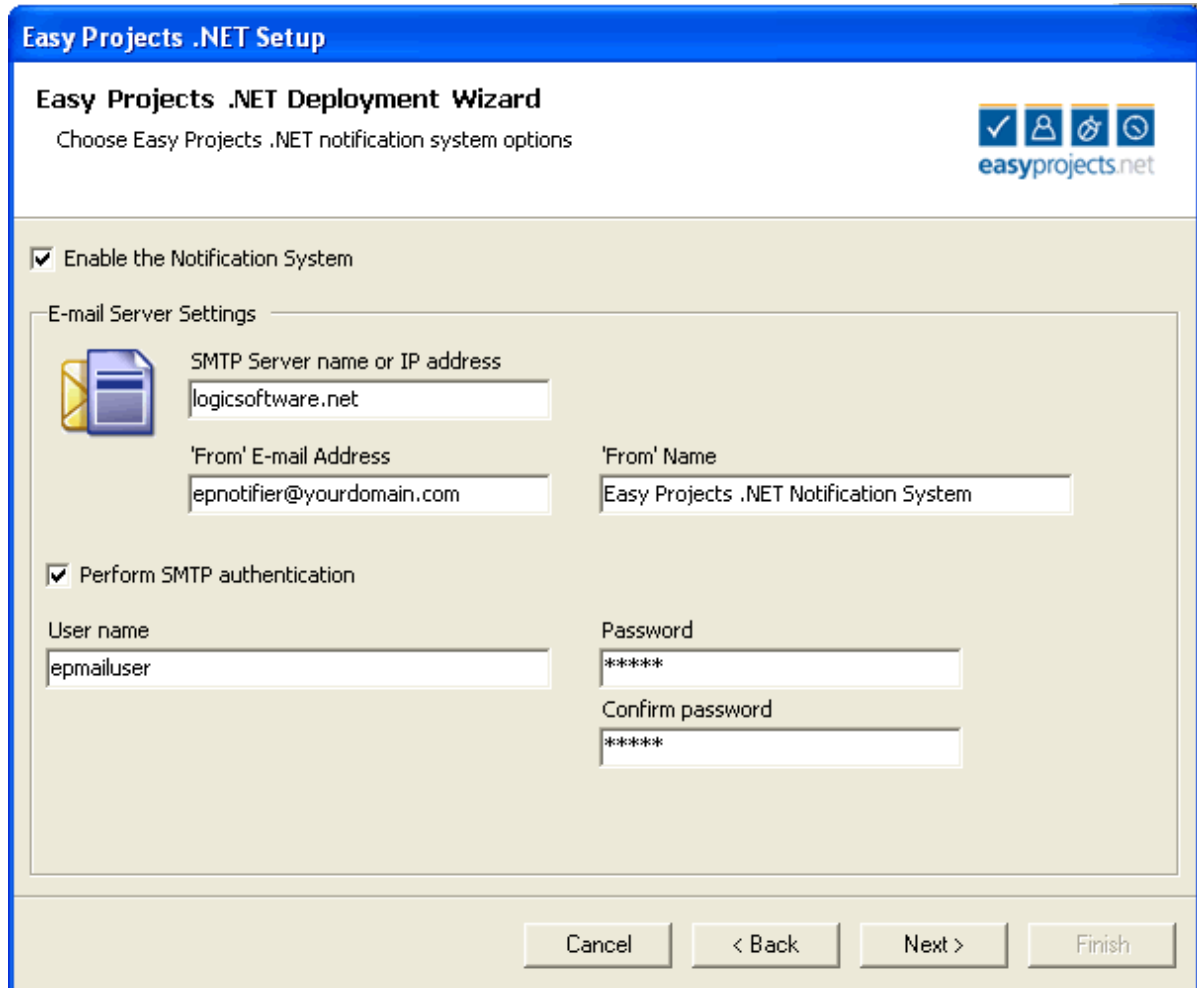
Configuring Easy Projects .NET

The next installation screen as shown in Figure 4 provides you with the opportunity to enable Easy Projects .NET E-mail Notification system. You should specify SMTP Server name or its IP address, 'From' E-mail address and 'From' name. These settings will be used by Notification system for transporting messages.

There are some servers that require SMTP authentication before performing any operation. In this case you should check the box 'Perform SMTP authentication' and specify a user name and his password.

If you don't know whether you need to perform SMTP authentication or not ask your System Administrator.

Figure 4: Easy Projects .Net Notification System




The screenshot shows the 'Easy Projects .NET Setup' window, specifically the 'Easy Projects .NET Deployment Wizard' step. The window has a blue title bar and a white header area. The main content area is light beige. At the top right of the header, there are four small icons: a checkmark, a person, a key, and a clock, followed by the text 'easyprojects.net'. Below the header, there is a section titled 'E-mail Server Settings' with a yellow envelope icon. The settings include: a checked checkbox 'Enable the Notification System'; a text box for 'SMTP Server name or IP address' containing 'logicsoftware.net'; a text box for ''From' E-mail Address' containing 'epnotifier@yourdomain.com'; a text box for ''From' Name' containing 'Easy Projects .NET Notification System'; a checked checkbox 'Perform SMTP authentication'; a text box for 'User name' containing 'epmailuser'; a text box for 'Password' containing '*****'; and a text box for 'Confirm password' containing '*****'. At the bottom of the window, there are four buttons: 'Cancel', '< Back', 'Next >', and 'Finish'.

Easy Projects .NET Setup

Easy Projects .NET Deployment Wizard
Choose Easy Projects .NET notification system options

☒ Enable the Notification System

E-mail Server Settings

 SMTP Server name or IP address
logicsoftware.net

'From' E-mail Address
epnotifier@yourdomain.com

'From' Name
Easy Projects .NET Notification System

☒ Perform SMTP authentication

User name
epmailuser

Password

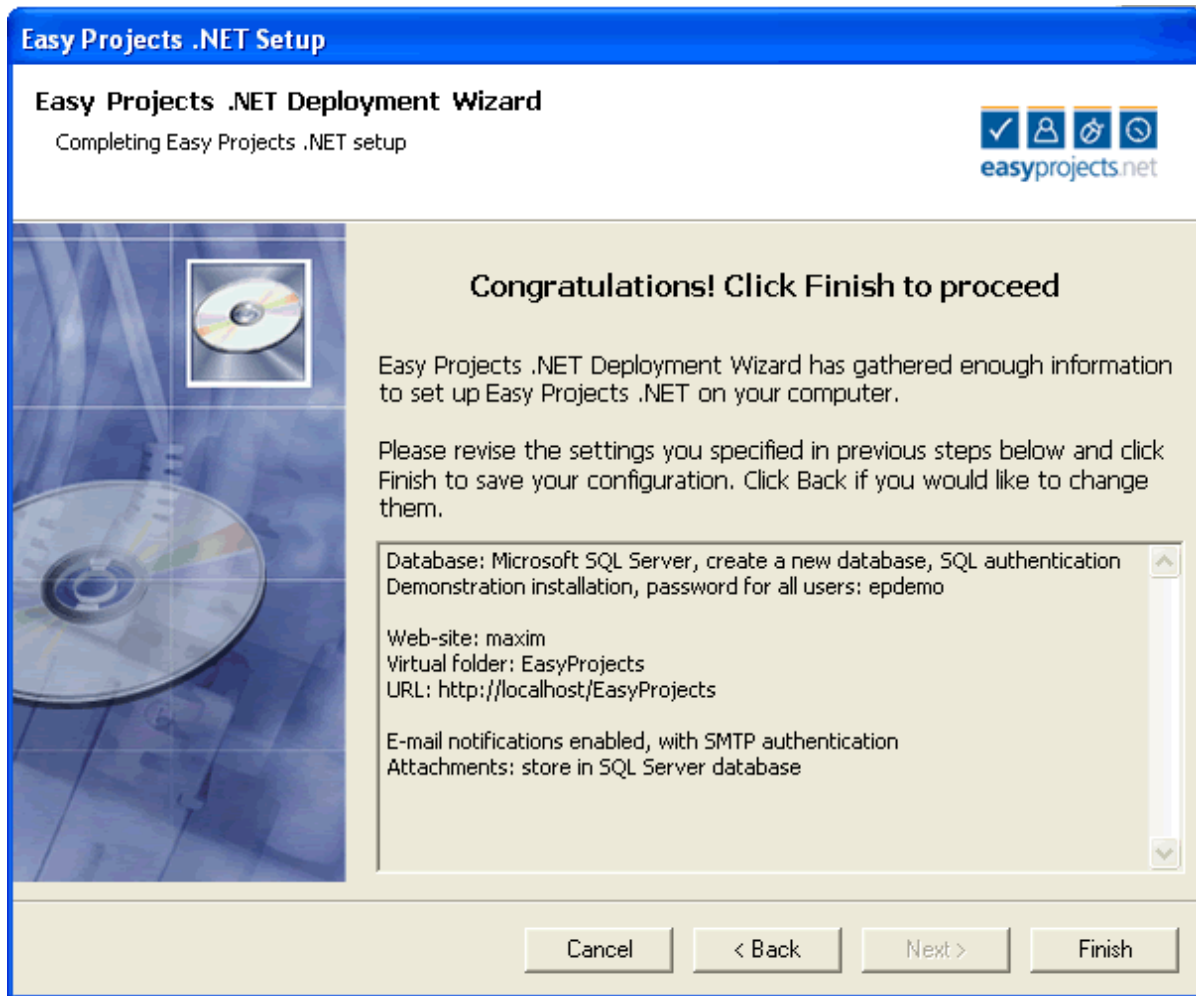
Confirm password

Cancel < Back Next > Finish

Finishing Easy Projects .NET setup

On this step of the installation process you will be able to revise all the settings you have specified during the previous steps. Click Finish button to save them or Back button to make necessary changes as shown in Figure 5.

Figure 5: Easy Projects .Net Deployment Wizard



Final Step

Congratulations! You have finished all configuration tasks and the installer will perform all the necessary operations to deploy Easy Projects .NET on the target computer.

On the last screen you will see the URL where you can access your application.

Easy Projects .NET will be available by the address similar to: <http://youraddress.com/EasyProjects>, where *youaddress.com* is a network address of the computer where system was installed and *EasyProjects* is a virtual directory name that you specified during the **IIS Configuration** step.

PLEASE REMEMBER:

By default Easy Projects .NET **Clean Installation** comes with the only Administrator account that should be used to create other users. Please use *Administrator* as a username and *admin* as a password.

Additional Help

For the most current FAQ go to the Easy Projects .NET web site:

<http://www.easyprojects.net/faq.asp>

Easy Projects .NET Knowledgebase is located at:

<http://www.easyprojects.net/KB/>

Easy Projects .NET Forums can be found at:

<http://www.easyprojects.net/Forums/>