

ICM PRINTER MONITOR USER GUIDE

(Ver. 1.0.0)

ICM Printer Monitor Installation	2
First Launch and Configuration of ICM Printer Monitor	5

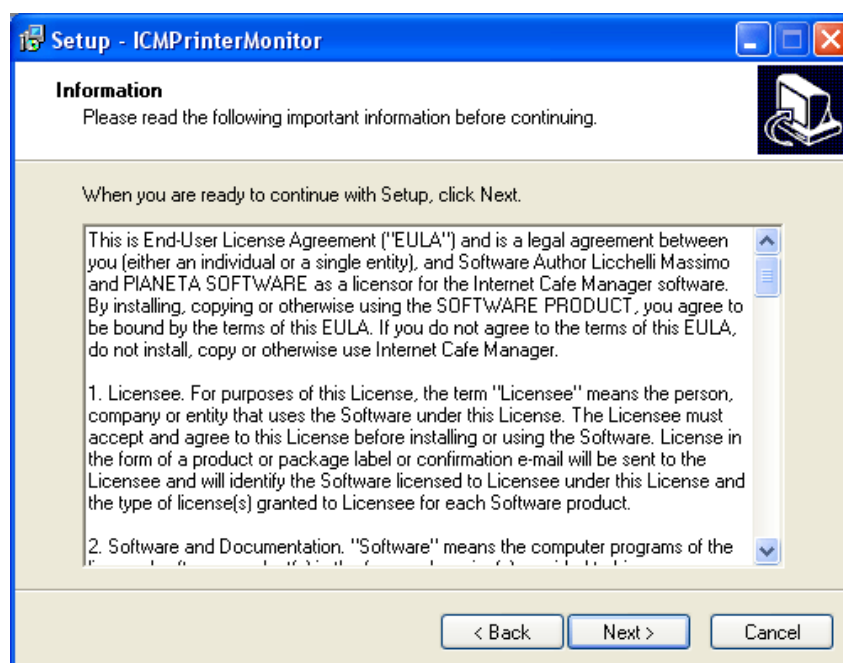
ICM Printer Monitor Installation

In order to installing ICM Printer Monitor, it is necessary to log on Windows as Administrator.

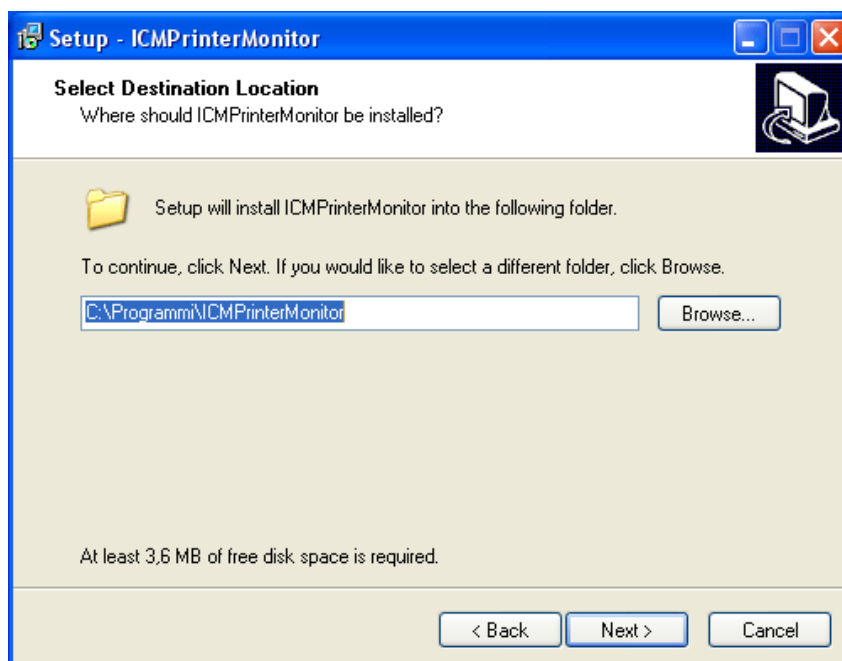
- Run **ICMPrinterMonitorSetup.exe**



- Click Next

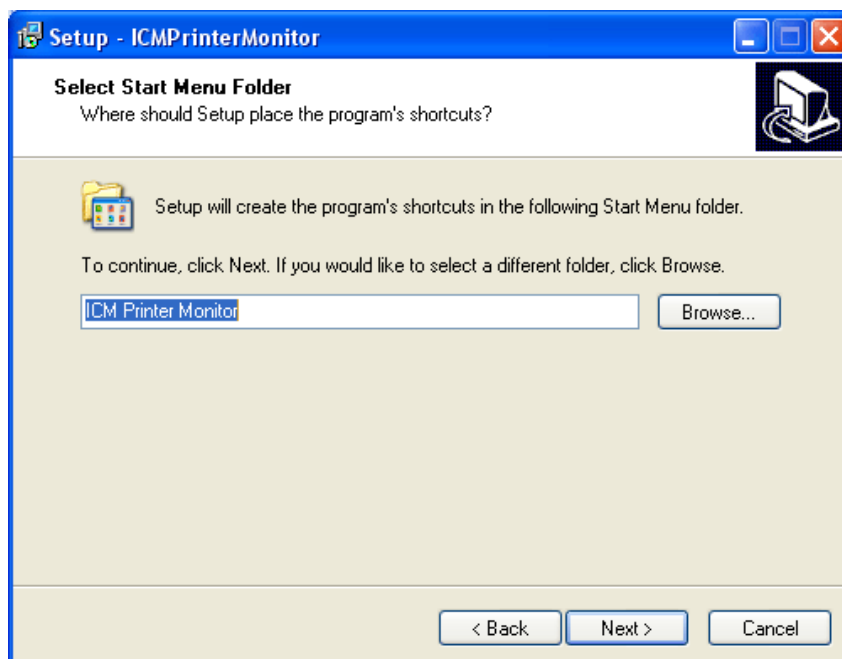


- Read carefully the Terms and Conditions for the software license. **Clicking on "Next" you accept all points of the Terms and Conditions.**

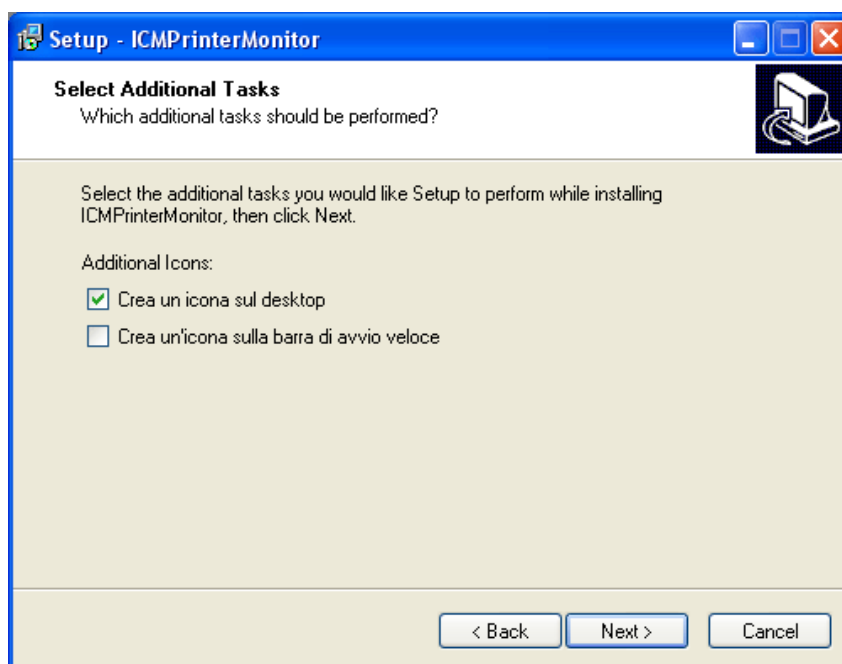


- The program will be installed in the folder C:\ Program Files\ICMPrinterMonitor\.

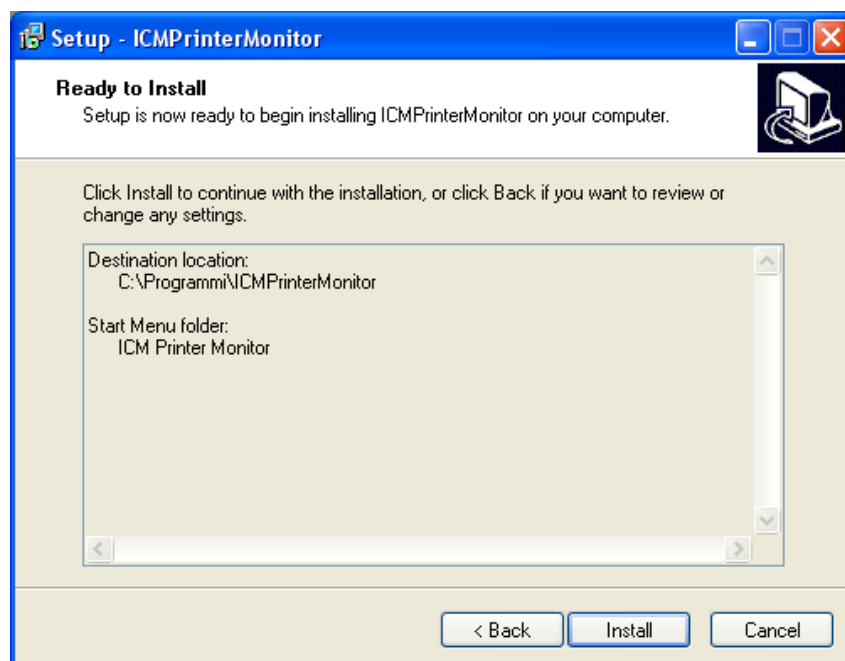
It's possible to change the software location, however it's suggestible to leave the default path.



- At this point it is possible to choose the name of the link that will be display on "Start">"Programs"



- It is possible to create shortcuts for quicker launch of the program:
 - On the Desktop (tick on the first box)
 - On the Quick Launch bar (tick on the second box)

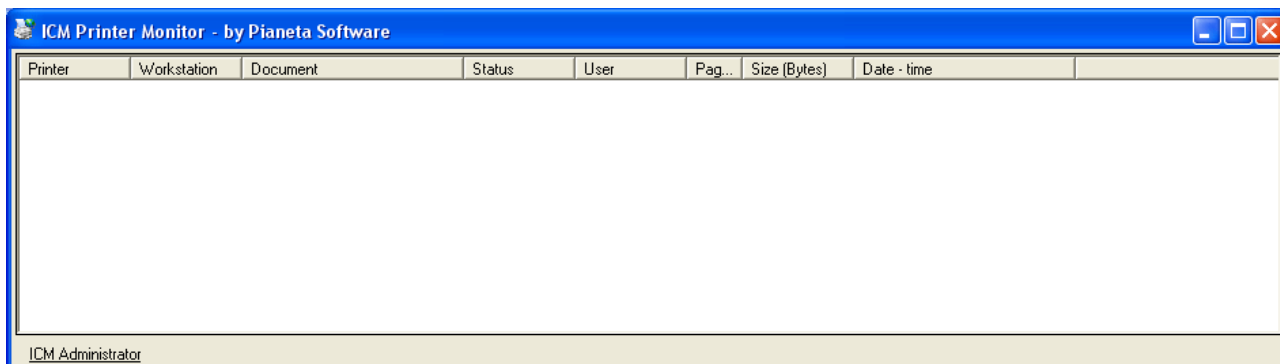


Click on “install” to complete the installation of selected options.

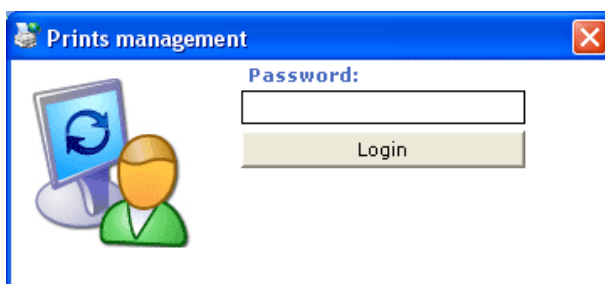
First Launch and Configuration of ICM Printer Monitor

In order to installing ICM Printer Monitor, it is necessary to log on Windows as Administrator.

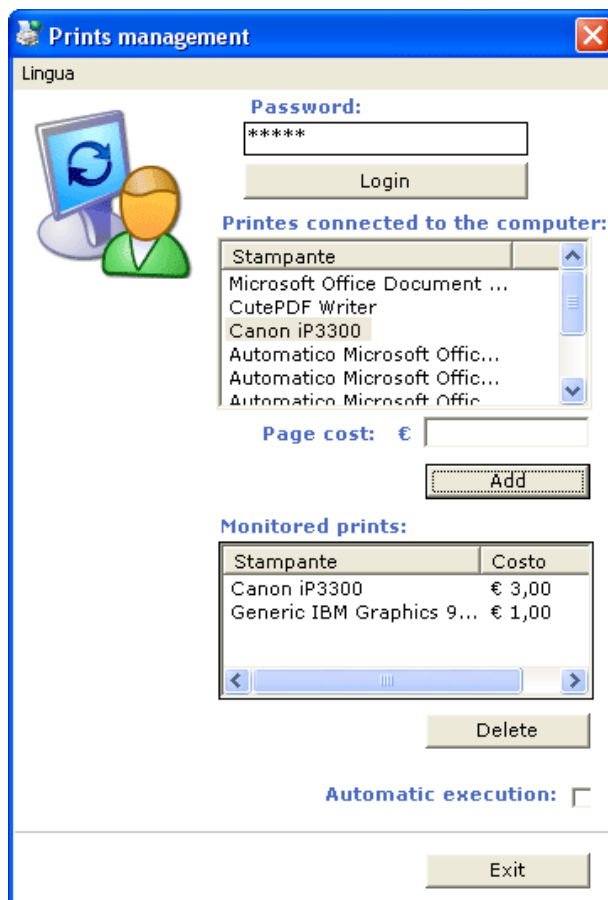
Launching the program, the Printer Monitor window will appear as the following image:



For configuration, access the administration area clicking on Administrator on the bottom left.



After typing the administrator password ("**admin**" as default, but it is suggested to change it through setting options of "**ICM Server**"), the following window will appear:



The printers monitored by the program are listed on the second list.

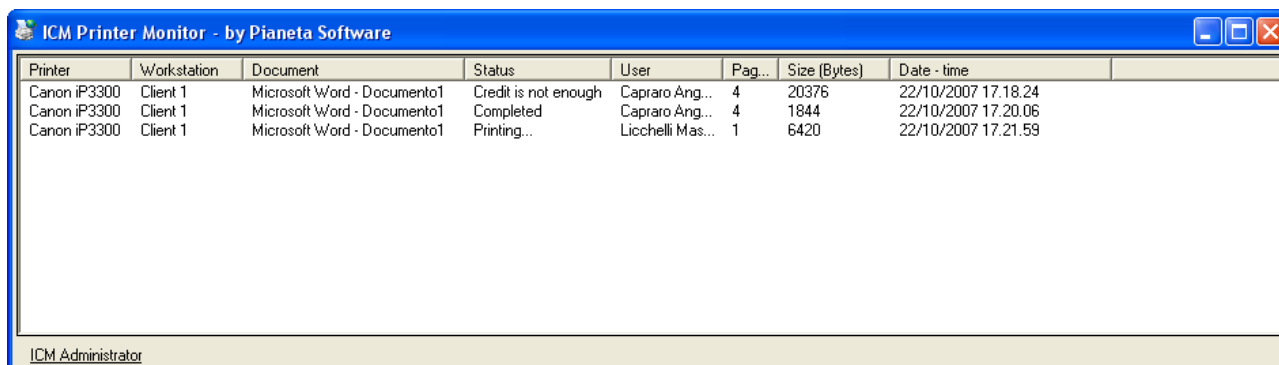
To add a printer, do the following: select the printer on the installed printers list, digit the cost for each printed page and click on Add.

Ticking on *Automatic launch*, **ICM Printer Monitor** will be run when Windows startups. (it is suggested to tick).

ICM Printer Monitor monitors the paper printed by Clients, charges the cost to users and sends a message to alert users about the additional print cost.

If an user is connected with a pre-paid credit, the user will be not allowed to print any paper if the user's credit is not enough.

On the program window is shown all the printed pages and all the printing pages, as the following image:



Printer	Workstation	Document	Status	User	Pag...	Size (Bytes)	Date - time
Canon iP3300	Client 1	Microsoft Word - Documento1	Credit is not enough	Capraro Ang...	4	20376	22/10/2007 17.18.24
Canon iP3300	Client 1	Microsoft Word - Documento1	Completed	Capraro Ang...	4	1844	22/10/2007 17.20.06
Canon iP3300	Client 1	Microsoft Word - Documento1	Printing...	Licchelli Mas...	1	6420	22/10/2007 17.21.59

ICM Administrator

The software has to be installed on each computer physically connected to monitor printer(s).

In case of network printer(s), the software should be installed on all clients.

Minimizing the program to icon, the program window will disappear and only a small icon will be visible on the bottom right screen (a printer with earth behind, the first icon on the left on the following image).



To quit the program, it is required to insert the administrator password and to click on *Quit*.

